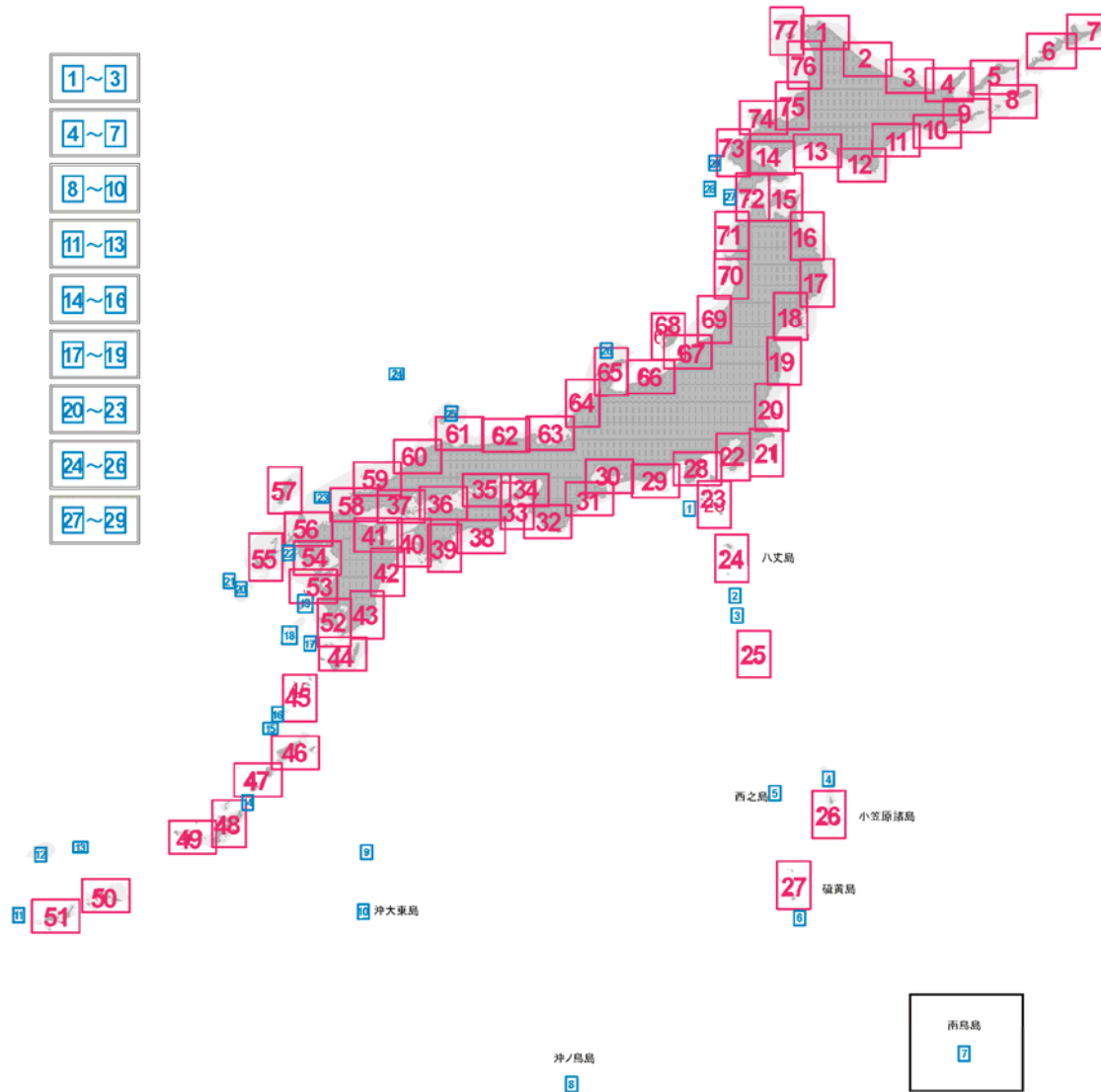


Map Number

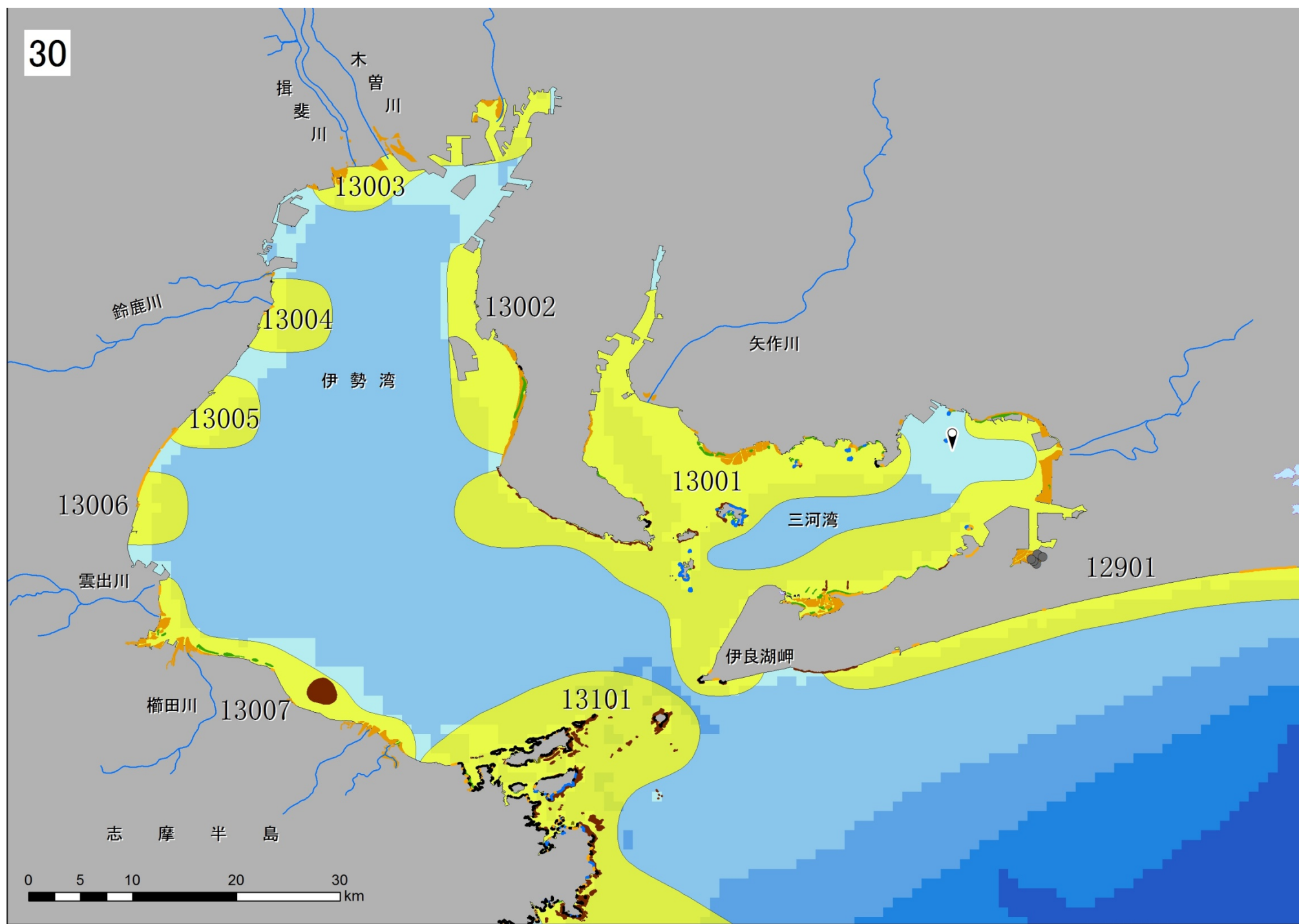


- 1~3
- 4~7
- 8~10
- 11~13
- 14~16
- 17~19
- 20~23
- 24~26
- 27~29

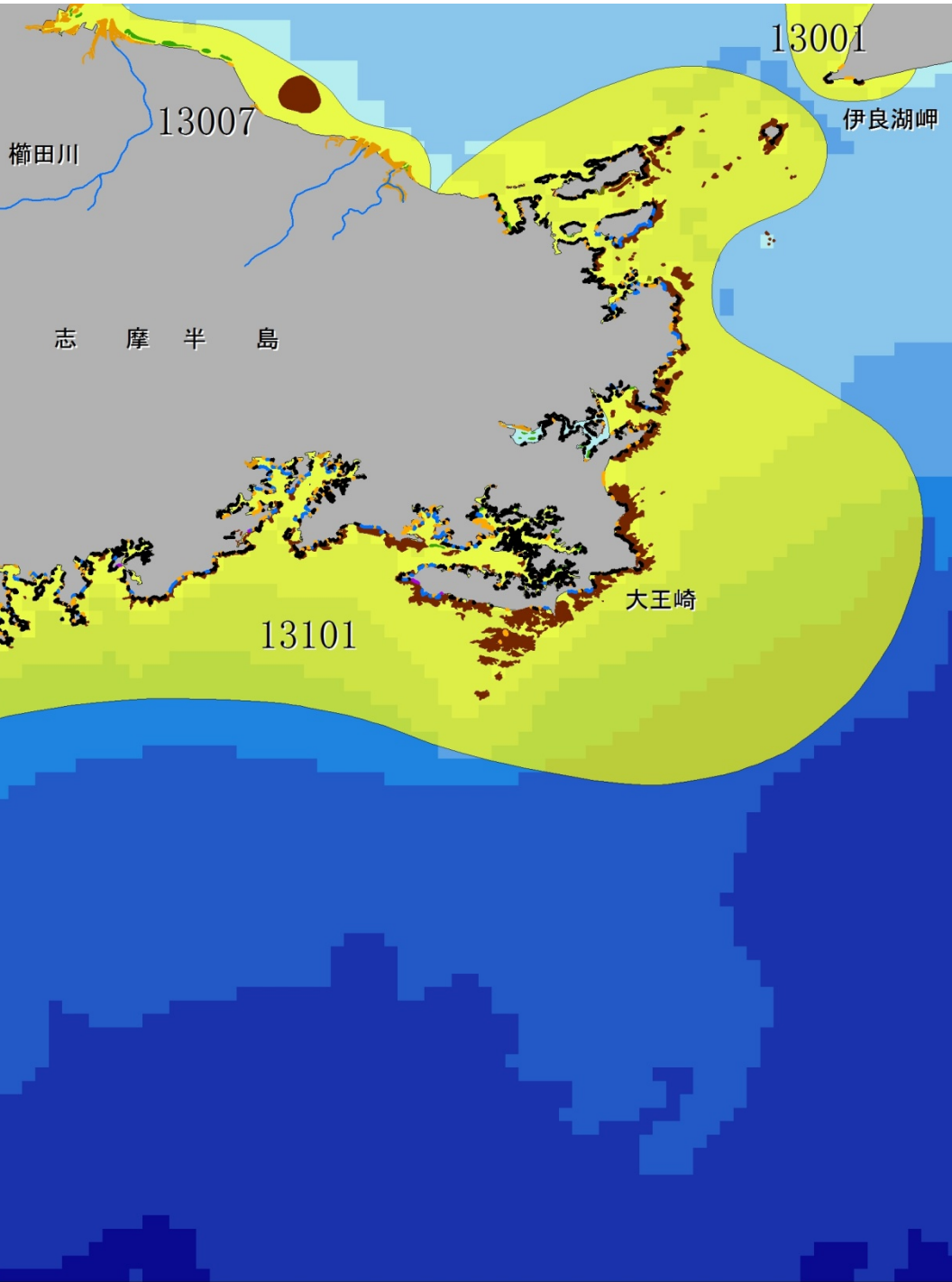
Legend

- EBSAs of Japan
- Special Natural Monument, Natural Monument
- Star sands (Foraminifera) coast
- Submerged cave
- Oyster reefs
- Wetland
- Mangroves
- Lagoons
- Natural coast**
- Cliffed coastline
- Muddy beach coastline
- Sandy beach coastline
- Rocky coastline
- gravel sediment coastline
- Moba (seaweed bed)
- Moba (seagrass bed)
- Moba (seagrass/ seaweed mixed bed)
- Others
- Tidal mud flats
- Coral/ Coral reefs

30



31





32

13301

御坊

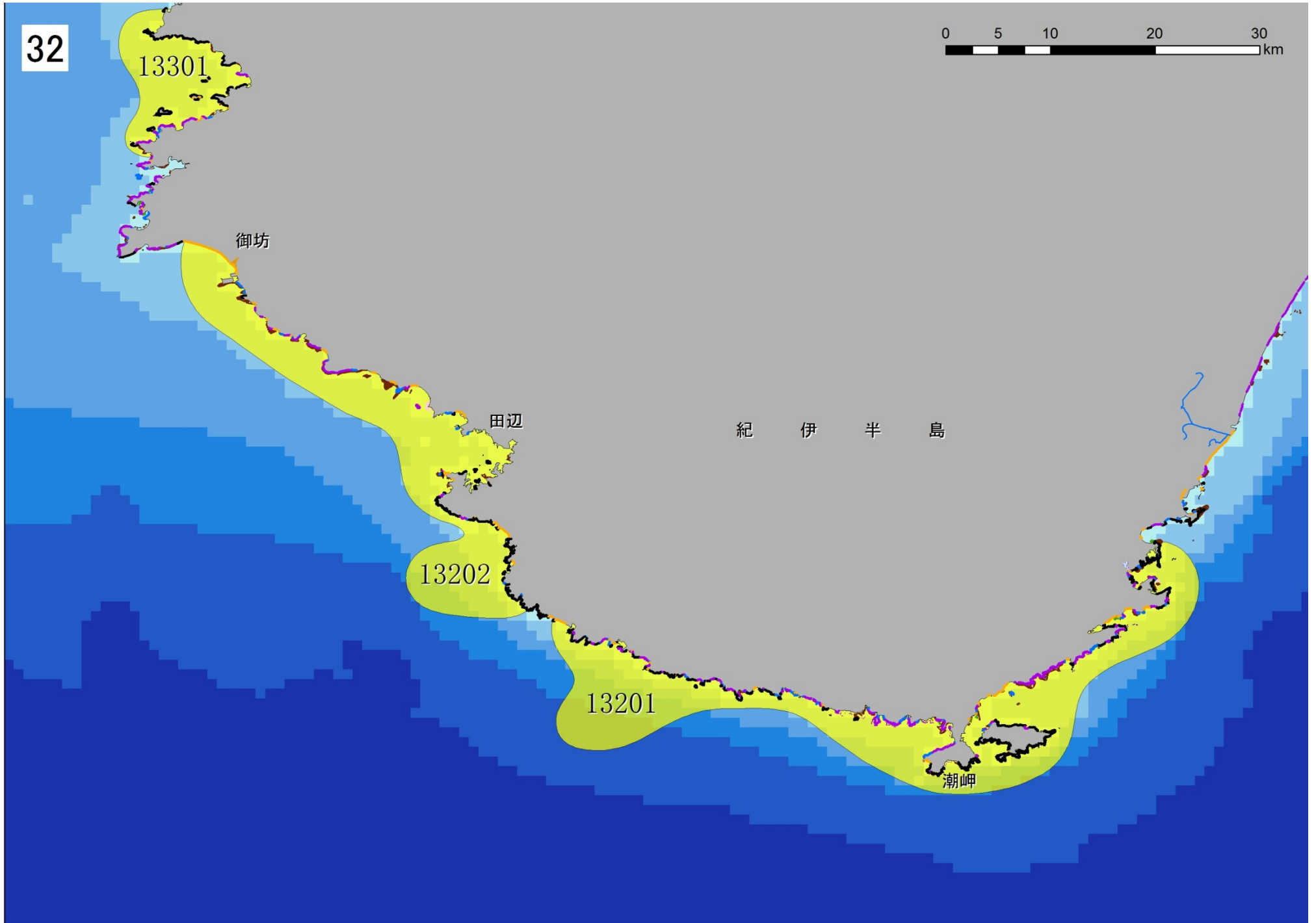
田辺

紀伊半島

13202

13201

潮岬



33

13401

大阪湾

13405

淡路島

13302

13303

紀ノ川

13304

吉野川

那賀川

13301

御坊

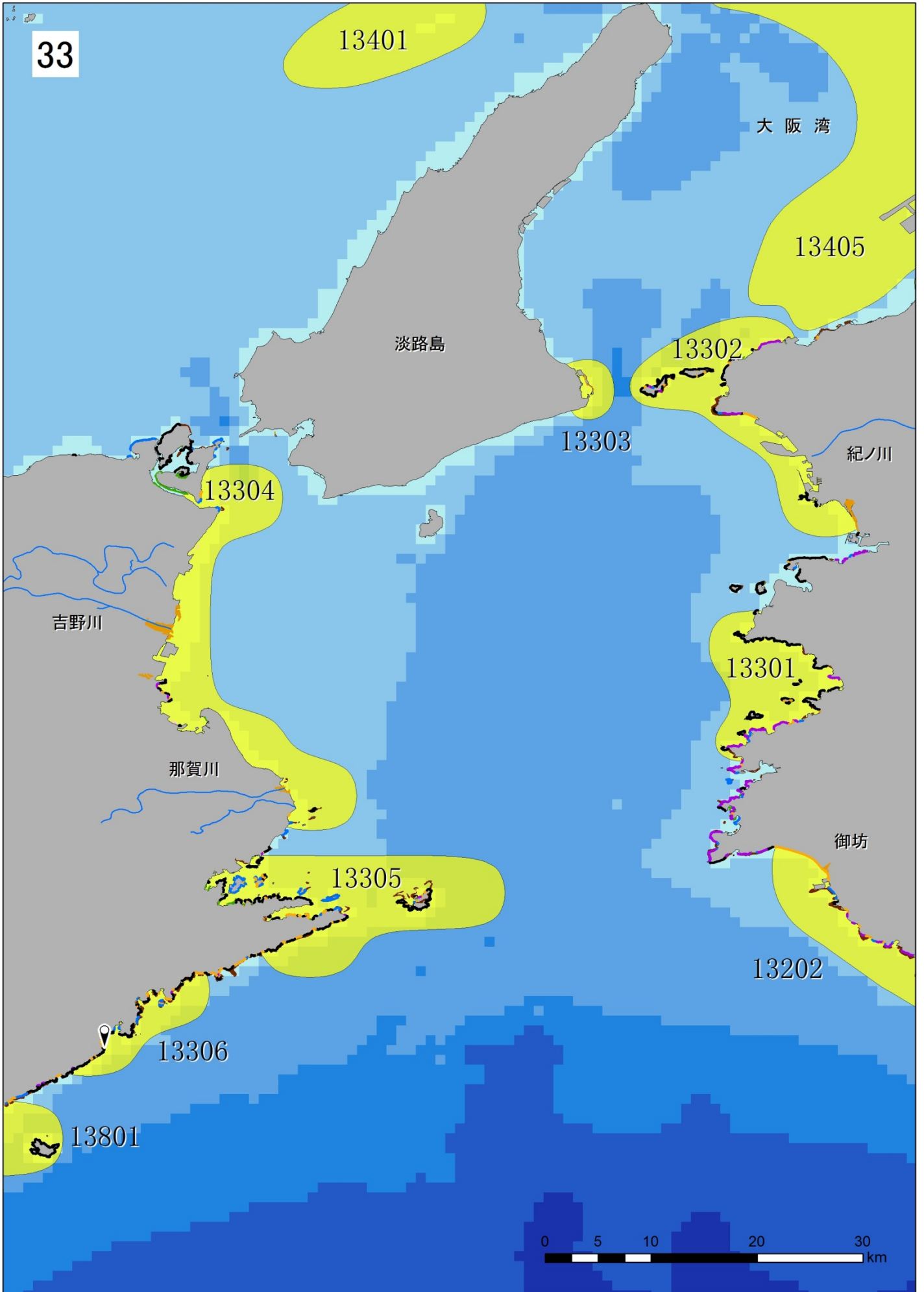
13305

13202

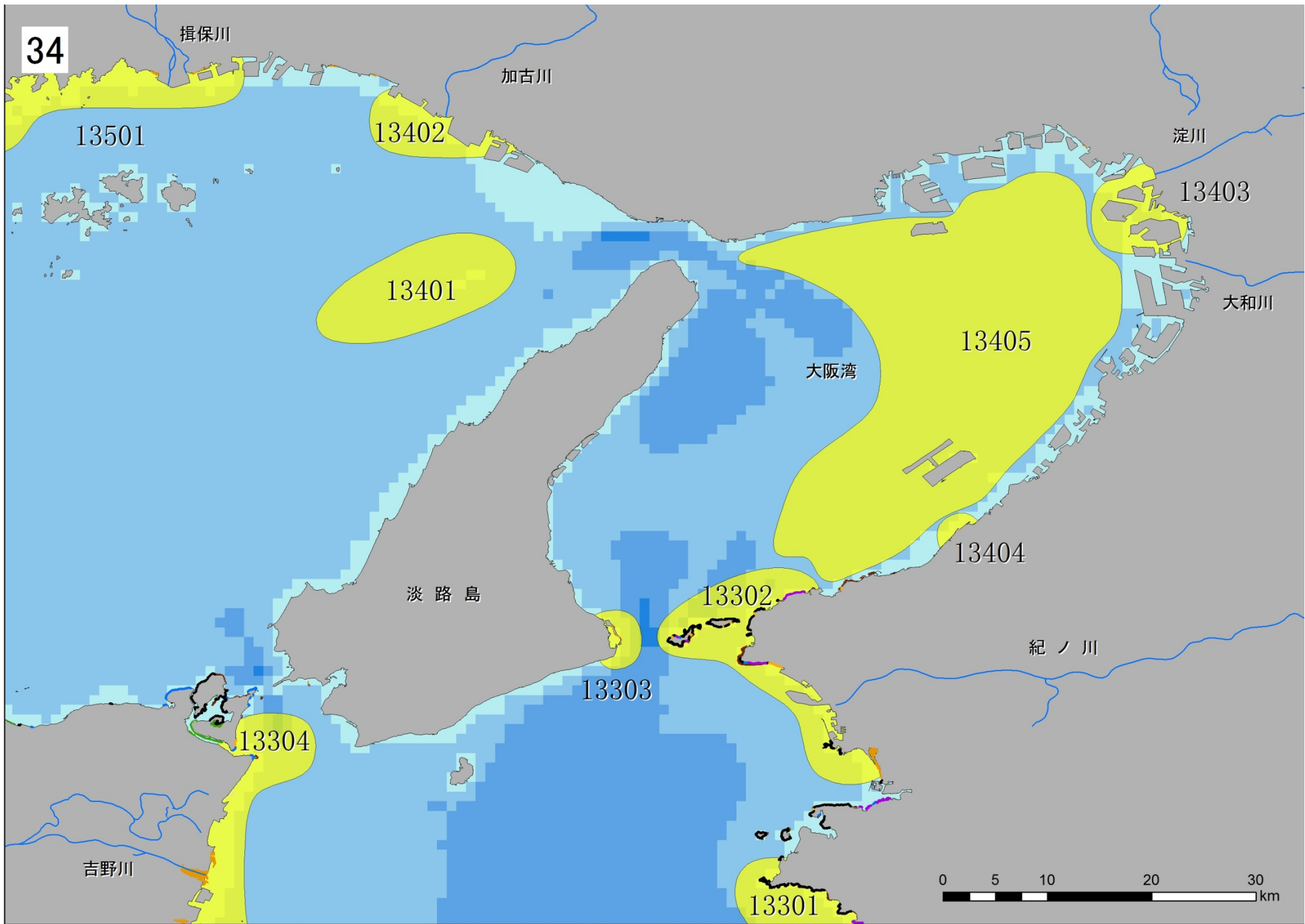
13306

13801

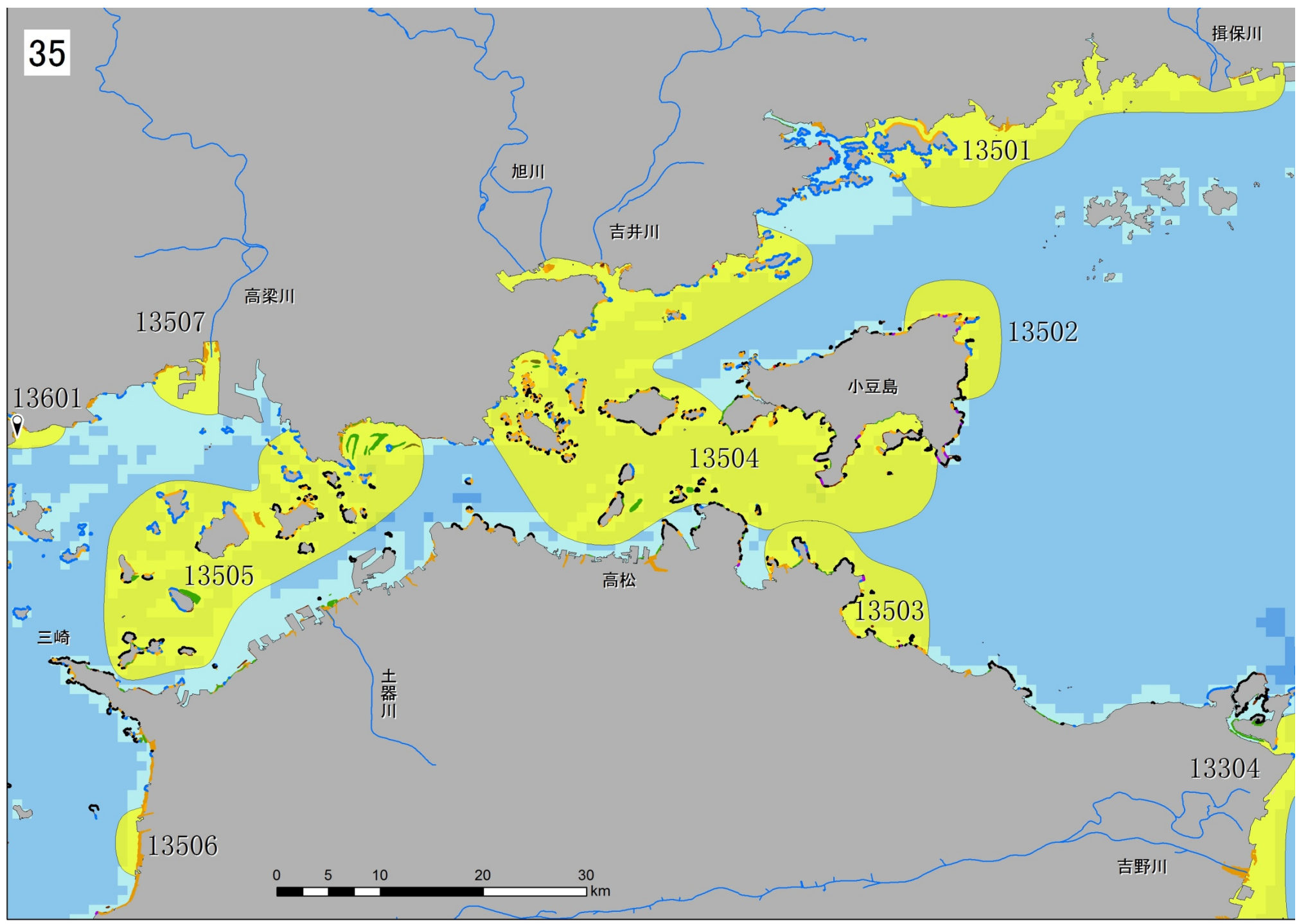
0 5 10 20 30 km



34



35



揖保川

旭川

吉井川

高梁川

13501

13507

13502

13601

小豆島

13504

高松

13503

13505

三崎

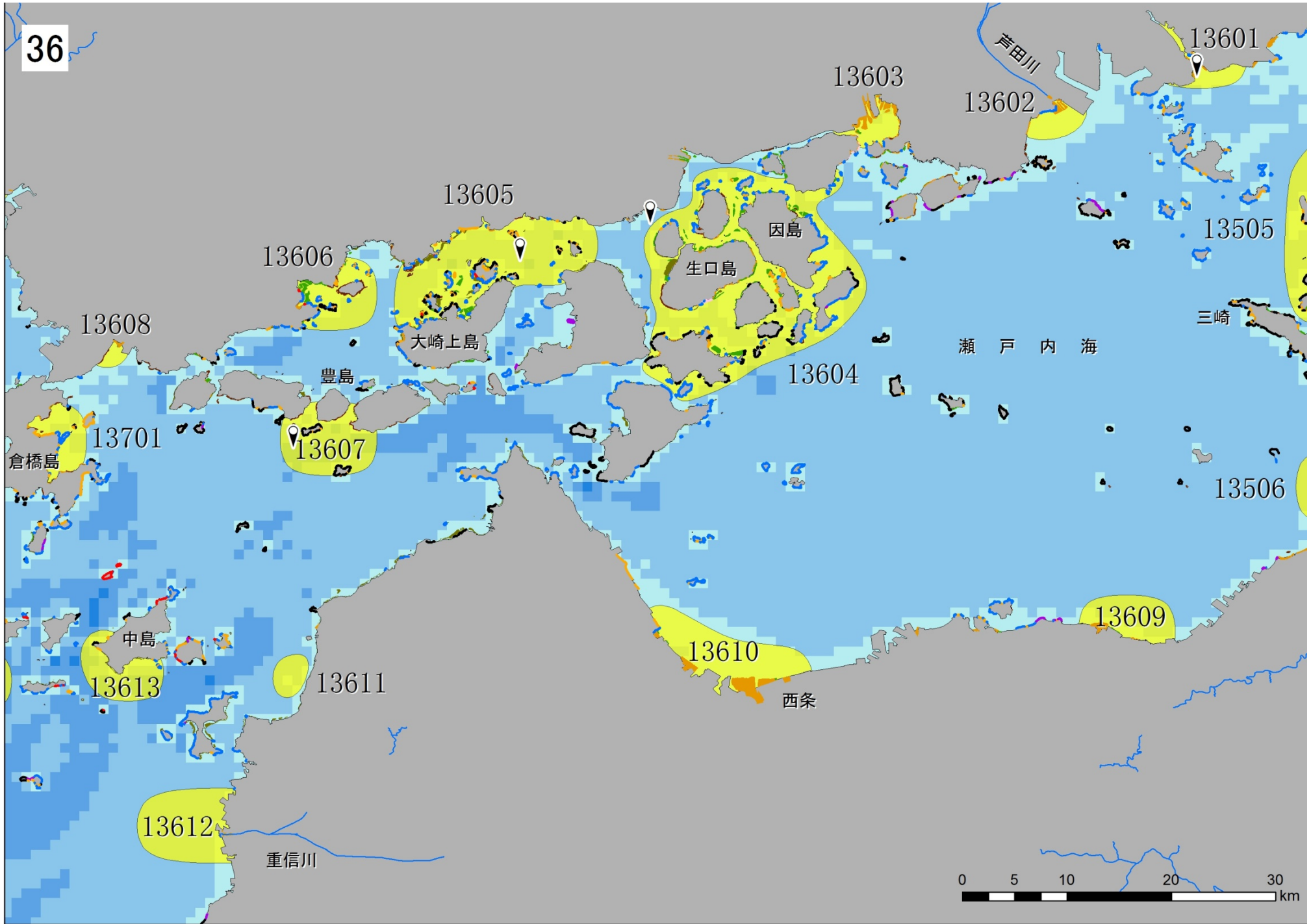
土器川

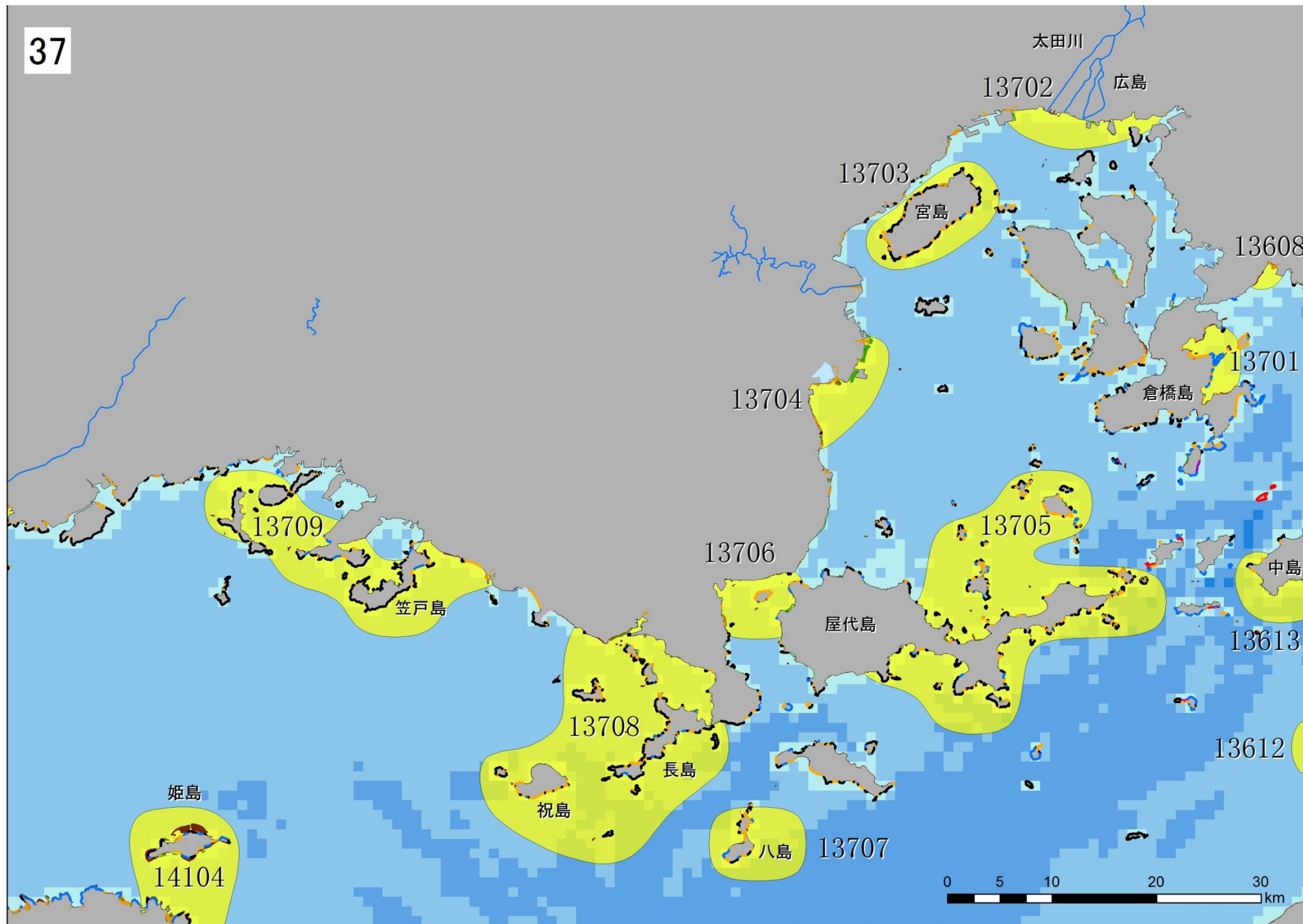
13304

13506

吉野川







38

