

**Nature School  
at Mt. Fuji National Park Area  
:the case of educational program  
held by Japanese private  
company**

**Seiji Yamato  
Oji Holdings Corporation**

**Oji Holdings,  
former Oji paper has 190,000ha of  
company land in Japan.  
The largest land holder among  
private companies.**

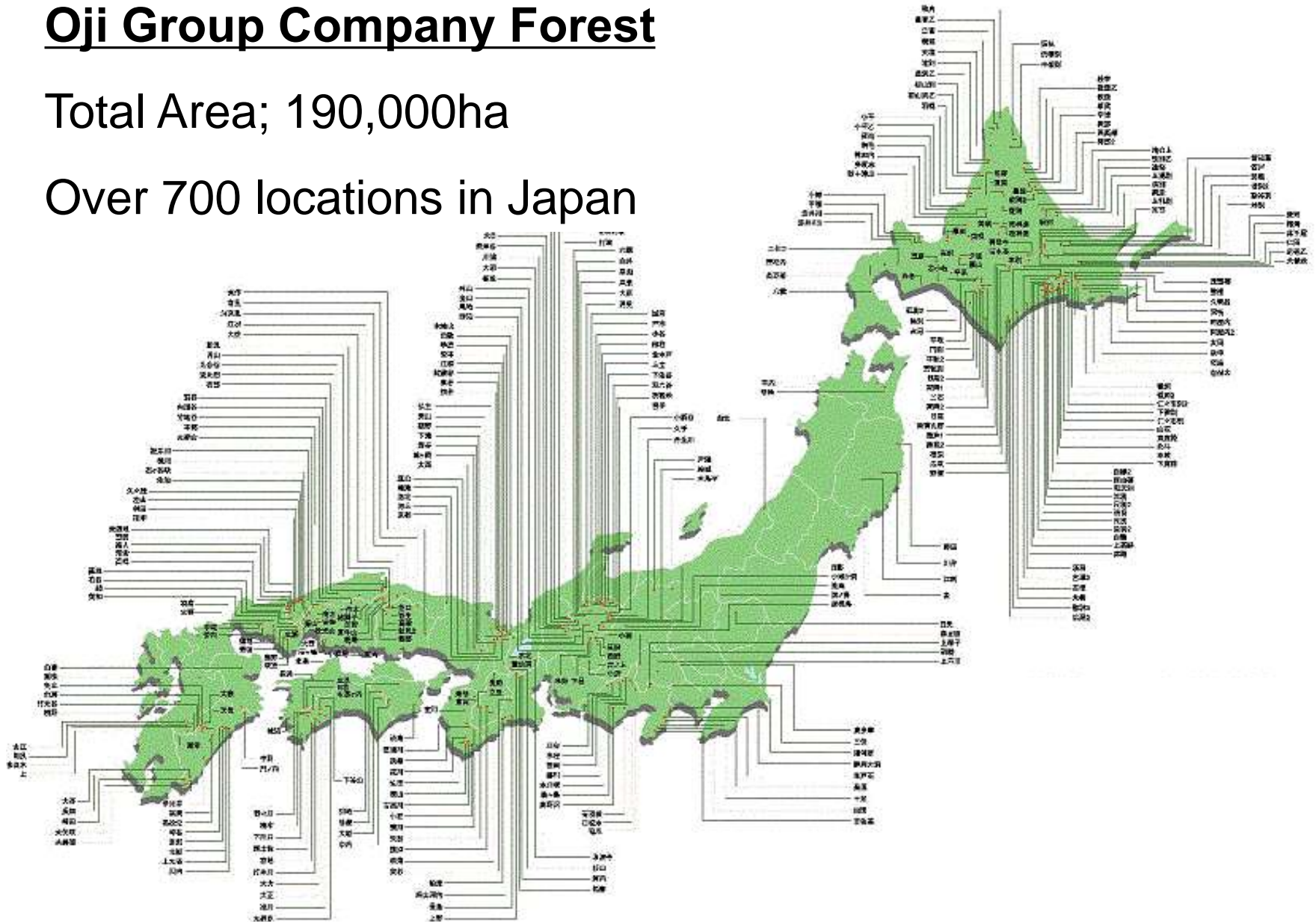
領域をこえ 未来へ

**OJI**

# Oji Group Company Forest

Total Area; 190,000ha

Over 700 locations in Japan











**We manage these company forests through the year.**

- There are several jobs which are planting, thinning, road construction, fire prevention, monitoring survey for biodiversity and other maintenance.**
- Total expense for the management; 6million U\$/year**
- On the other hand, we also sell the timber around 100,000m<sup>3</sup> annually.**

# Ratio of the reserved forest among 190,000ha;

<b>Reserved forest*;</b>	<b>39%</b>
<b>Non reserved;</b>	<b>59%</b>
<b>National park;</b>	<b>2%</b>

**\*Explanation of “Reserved forest”;**

- In Japan, there are special protection forest area designated by Forest Agency or provincial Governor.**
- There are 17 categories; watershed protection, debris flow protection, wind protection and so on.**



**Nature School; since 2004  
we have held the “nature school” at  
company forest and paper mill site  
every year.**

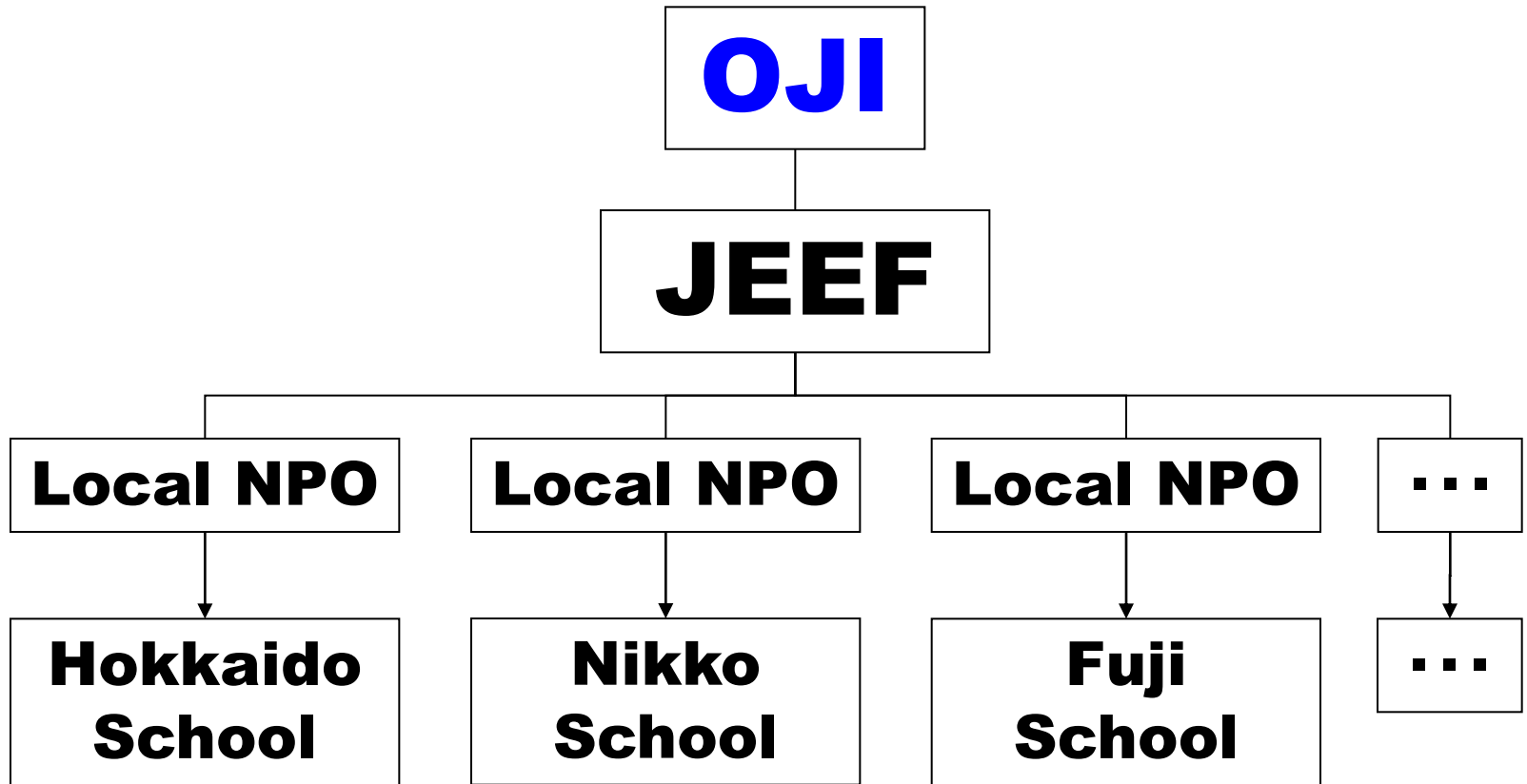




**Nature School at  
Hokkaido,  
Nikko,  
Fuji,  
Hiroshima,  
Miyazaki**



# The Japan Environmental Education Forum (JEEF) and their member local NGO conduct the each nature school.



## ***Nature School Programs;***

<b>Length;</b>	<b>3 days</b>
<b>Fee;</b>	<b>Free except transportation</b>
<b>Number;</b>	<b>20 children at each site</b>
<b>Age;</b>	<b>7 through 15</b>
<b>Activities;</b>	<b>tree climbing, swimming at river or sea, cooking, several games at forest, visiting of paper mill and so on</b>



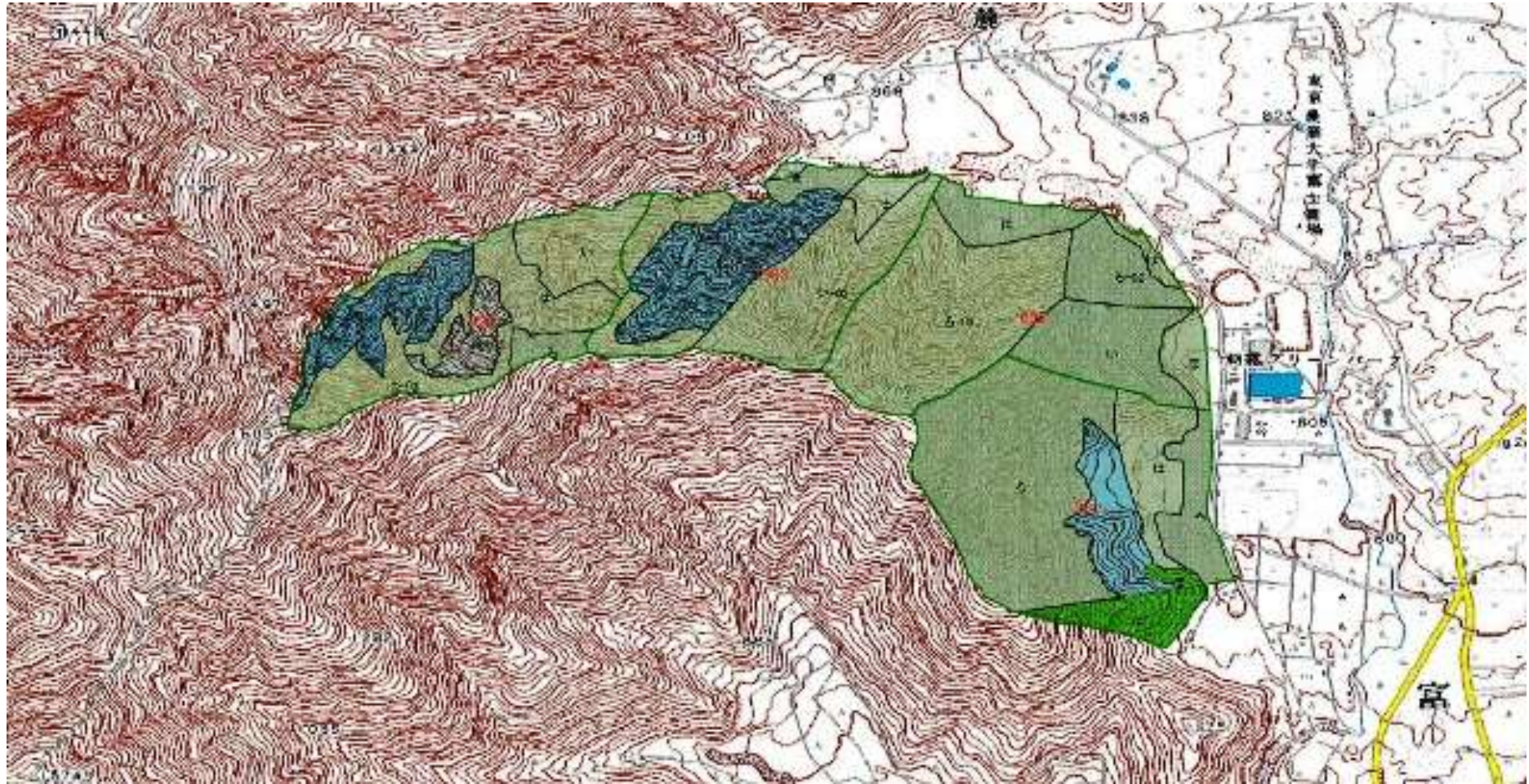
# Nature School at Fuji



# **Fuji-Hakone-Izu National Park**

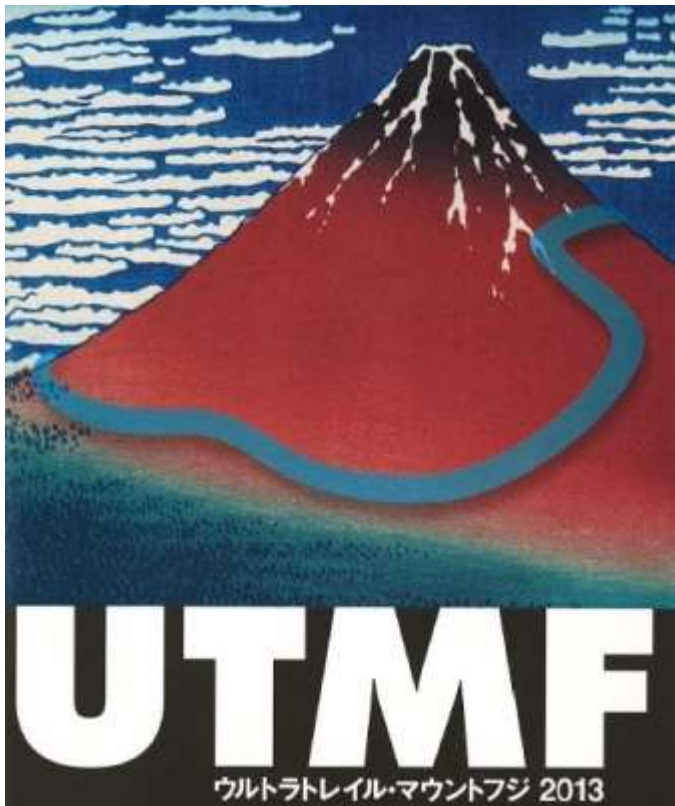
- The Park was designated as National park in 1936.**
- It consists of four regions; Mt Fuji, the Hakone, Izu peninsula and Izu island area.**
- June 2013, UNESCO decided Mt. Fuji as one of world heritage site.**

# Asagiri Forest located at Fuji-Hakone-Izu National Park





# Do you know Ultra-Trail Run? UTMF was held at April 2013



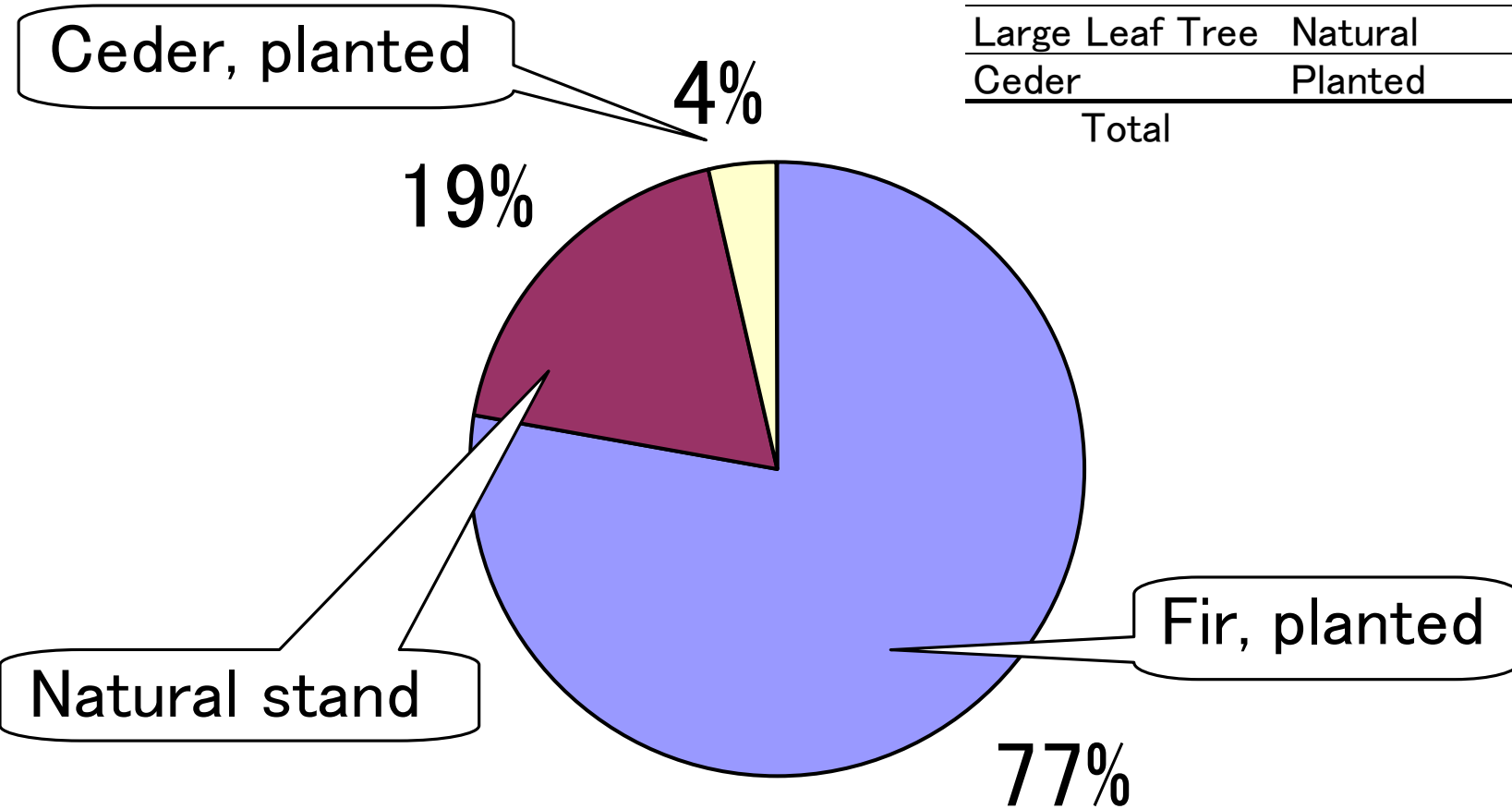
# Asagiri forest was a part of those course.





# About Asagiri Forest;

Species	N/P	Area(ha)	Ratio
Fir	Planted	153	77%
Large Leaf Tree	Natural	37	19%
Ceder	Planted	7	4%
Total		197	





# **Restriction for Forestry at National Park**

**At national park area there are 3 categories of restriction for the forestry activity.**

- #1. No Cuttings**
- #2. Only Selective Cuttings**
- #3. Cuttings, subject to maintain their landscape**

**Asagiri forest is classified at category #3. We have made thinning operation at year 2011.**

**Introduction of several  
activities at Fuji School and  
Asagiri Forest**

# tree climbing



# swimming at river





# With animals



**At the lodge of local NGO,  
“Whole Earth Nature School”**

# Learn about paper making



**Unique points** of our program;

**experience of  
Thinning and Pruning  
at forest**



## **About “Thinning”;**



- Planted trees need thinning.**
- After planted we usually thin the trees every 10 to 15 years until harvest.**
- If thinning is not enough for the planted trees, sun lights won't reach the ground and too much competition between trees make each stem narrow like “bean sprout”.**

# Thinning Experience





## About “Pruning”;



**Planted trees need also pruning.  
After planted we usually prune the  
lower part of branch until 10 to 15  
years old.**

**If pruning is not enough for the  
planted tree, lumber made from  
those tree have a lot of “knots”.  
That means less value.**





# Pruning experience





**...then, they made ornaments from fallen trees by themselves**



## **Statements from the participants;**

- **”It was fan to climb a tree.”**
- **”I found that paper made from tree and recycled paper.”**
- **”Thank you for telling me the facts which I didn’t know.”**
- **”It was good for me to learn about the thinning and pruning. I found that more light came after thinning.”**



*Our targets of this program are  
let them learn about;*

- trees, forest and paper making **with fun!**
- trees are **sustainable** material for us
- cutting trees are **not always bad** thing; planted trees need thinning to become “healthy” forests.

## **Education is important;**

- We learn that for children it's easy to learn and easy to forget.**
- However, learning through the experience is memorized strongly to them.**

## **Bottom Line;**

**- We'd like to continue our Nature School program with corporation of environmental education NGOs respecting Japanese beautiful nature.**



**-Unfortunately, this autumn Asagiri forest was damaged by typhoon very badly.**



**- Next year we're plan to add our program a new activity to plant trees at this site. We believe it will also good experience for the children.**

***Thank you very much!***

