



GÌN GIỮ THIÊN NHIÊN, VĂN HÓA LÀ GÌN GIỮ TƯƠNG LAI SAVE NATURE, SAVE CULTURE, SAVE FUTURE

Community-based forest management in Bidoup-Nuiba National Park, Vietnam

Do Van Ngoc, Vice director
Bidoup-Nuiba National Park, Vietnam





GÌN GIỮ THIÊN NHIÊN, VĂN HÓA LÀ GÌN GIỮ TƯƠNG LAI SAVE NATURE, SAVE CULTURE, SAVE FUTURE

Being a corridor connecting two the highest mountains of
Langbiang plateau



BiDouup mountain 2.287 m



Langbiang mountain 2.167 m



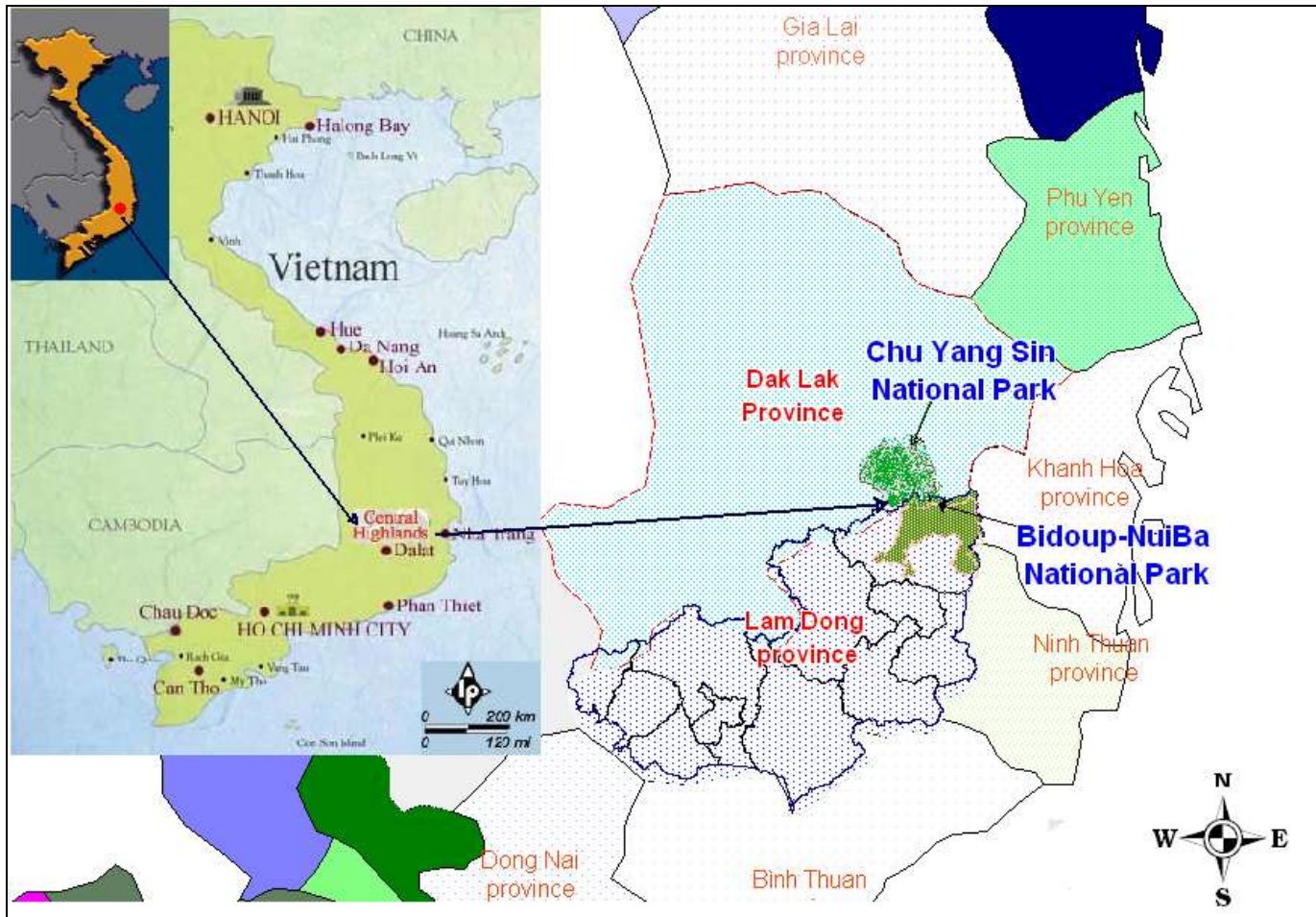
GÌN GIỮ THIÊN NHIÊN, VĂN HÓA LÀ GÌN GIỮ TƯƠNG LAI SAVE NATURE, SAVE CULTURE, SAVE FUTURE

I-BACKGROUND INFORMATION

- Established on November 19, 2004 by a decision of the Prime Minister
- Area: **70, 038 ha**
- Representative office: 5E Tran Hung Dao street– Da Lat city – Lam Dong province, Vietnam
- Tel: 063.823953; Fax: 063.813654
- Email : bidoupnuiba@vnn.vn



GÌN GIỮ THIÊN NHIÊN, VĂN HÓA LÀ GÌN GIỮ TƯƠNG LAI SAVE NATURE, SAVE CULTURE, SAVE FUTURE





**GÌN GIỮ THIÊN NHIÊN, VĂN HÓA LÀ GÌN GIỮ TƯƠNG LAI
SAVE NATURE, SAVE CULTURE, SAVE FUTURE**

II. NATURAL RESOURCES AND BIODIVERSITY

2.1- Ecosystems

- Evaluated as one of four centers of biodiversity of Vietnam;
- The area covered by primary forests: over 91%;
- Comprising the following ecosystems:



GÌN GIỮ THIÊN NHIÊN, VĂN HÓA LÀ GÌN GIỮ TƯƠNG LAI SAVE NATURE, SAVE CULTURE, SAVE FUTURE

1- Tropical rain ever-green closed forest: 20,850 ha





GÌN GIỮ THIÊN NHIÊN, VĂN HÓA LÀ GÌN GIỮ TƯƠNG LAI SAVE NATURE, SAVE CULTURE, SAVE FUTURE

2- Coniferous and broad-leaved mixed closed forest:
14,038 ha.





GÌN GIỮ THIÊN NHIÊN, VĂN HÓA LÀ GÌN GIỮ TƯƠNG LAI SAVE NATURE, SAVE CULTURE, SAVE FUTURE

3. Sub tropical coniferous sparse forest: 20,614 ha





**GÌN GIỮ THIÊN NHIÊN, VĂN HÓA LÀ GÌN GIỮ TƯƠNG LAI
SAVE NATURE, SAVE CULTURE, SAVE FUTURE**

4. High mountain short forest: 402 ha





**GÌN GIỮ THIÊN NHIÊN, VĂN HÓA LÀ GÌN GIỮ TƯƠNG LAI
SAVE NATURE, SAVE CULTURE, SAVE FUTURE**

5- Mossy forest





GÌN GIỮ THIÊN NHIÊN, VĂN HÓA LÀ GÌN GIỮ TƯƠNG LAI SAVE NATURE, SAVE CULTURE, SAVE FUTURE

6- Other ecosystems



-Savanna;

**-The Bamboo and broad-leaved
mixed forest;**

- A branch of Mekong river.



GÌN GIỮ THIÊN NHIÊN, VĂN HÓA LÀ GÌN GIỮ TƯƠNG LAI SAVE NATURE, SAVE CULTURE, SAVE FUTURE

2.2- Diversity in species:

- Plant:

+ More than 1,900 species of vascular plant including: 161 families, 673 genera, of which:

- 91 endemic species;
- 62 rare and endangered species listed in the Red Book of Vietnam



Pinus krempfii



Fokienia hodginsii with the diameter over 3 m



GÌN GIỮ THIÊN NHIÊN, VĂN HÓA LÀ GÌN GIỮ TƯƠNG LAI SAVE NATURE, SAVE CULTURE, SAVE FUTURE

Diversity in orchid



Tục đoạn (*Pholidota convallariae*)



Can đạm (*coelogyne mooreana*)



Dendrobium bellatulum



GÌN GIỮ THIÊN NHIÊN, VĂN HÓA LÀ GÌN GIỮ TƯƠNG LAI SAVE NATURE, SAVE CULTURE, SAVE FUTURE

Newly discovered species



Vanda bidupensis Aver. et Christ



Clanthe duyana Aver



Corybas annamensis Aver



GÌN GIỮ THIÊN NHIÊN, VĂN HÓA LÀ GÌN GIỮ TƯƠNG LAI SAVE NATURE, SAVE CULTURE, SAVE FUTURE

Animal:

- Four classes:
 - Mammal, bird, reptile, and amphibian
 - Including 95 families and 382 species.

Of which:

- 36 species listed in the Red Book of Vietnam



GÌN GIỮ THIÊN NHIÊN, VĂN HÓA LÀ GÌN GIỮ TƯƠNG LAI
SAVE NATURE, SAVE CULTURE, SAVE FUTURE

Primate



Nycticebus pygmaeus



Macaca fascicularis



**GÌN GIỮ THIÊN NHIÊN, VĂN HÓA LÀ GÌN GIỮ TƯƠNG LAI
SAVE NATURE, SAVE CULTURE, SAVE FUTURE**

Mammal



Bos gauros



Martes flavigula



GÌN GIỮ THIÊN NHIÊN, VĂN HÓA LÀ GÌN GIỮ TƯƠNG LAI SAVE NATURE, SAVE CULTURE, SAVE FUTURE

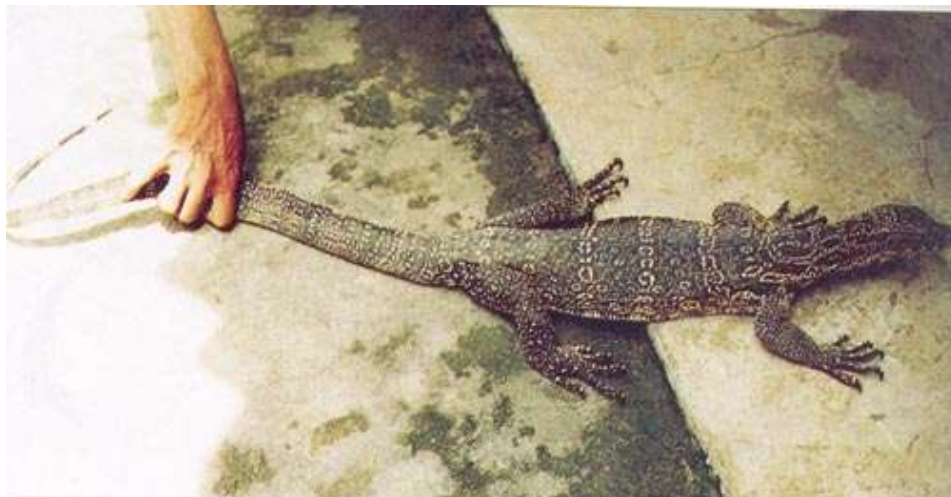
Reptile



Naja naja



Acanthosaura lepidogaster



Varanus salvator



Indotestudo elongata



GÌN GIỮ THIÊN NHIÊN, VĂN HÓA LÀ GÌN GIỮ TƯƠNG LAI SAVE NATURE, SAVE CULTURE, SAVE FUTURE

Amphibian



Feihyla palperalis



Rhacophorus calcaneus



Phyllautus gryllus



Rana montivaga



GÌN GIỮ THIÊN NHIÊN, VĂN HÓA LÀ GÌN GIỮ TƯƠNG LAI SAVE NATURE, SAVE CULTURE, SAVE FUTURE

Birds

- Being one of 221 the world's Endemic Bird Areas.
- 3 Important Bird Areas of the country: Langbiang; Cong Troi and Bidoup.



Crocias langbianis



Garrulax yersini



**GÌN GIỮ THIÊN NHIÊN, VĂN HÓA LÀ GÌN GIỮ TƯƠNG LAI
SAVE NATURE, SAVE CULTURE, SAVE FUTURE**



Garrulax leucolophus



Garrulax vassali



Cutia nipalensis



Carduelis monguilloti



**GÌN GIỮ THIÊN NHIÊN, VĂN HÓA LÀ GÌN GIỮ TƯƠNG LAI
SAVE NATURE, SAVE CULTURE, SAVE FUTURE**

III. COMMUNITY-BASED FOREST MANAGEMENT IN BIDOU P-NUI BA NATIONAL PARK

WHY COMMUNITY-BASED FOREST MANAGEMENT ?



GÌN GIỮ THIÊN NHIÊN, VĂN HÓA LÀ GÌN GIỮ TƯƠNG LAI SAVE NATURE, SAVE CULTURE, SAVE FUTURE

CHALLENGES

ILLEGAL LOGGING



TRAPPING, SNARING

POVERTY



POVERTY

ENCROACHMENT



OVER EXPLOITING NTFP



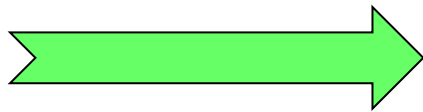
FOREST FIRE





**GÌN GIỮ THIÊN NHIÊN, VĂN HÓA LÀ GÌN GIỮ TƯƠNG LAI
SAVE NATURE, SAVE CULTURE, SAVE FUTURE**

It is important to improve livelihood for local community



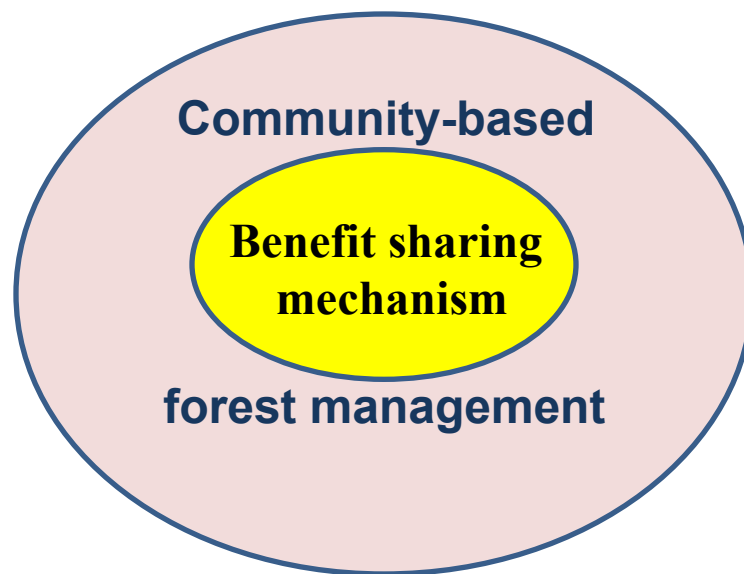
Necessary to build a mechanism of community-based forest management aimed at improving livelihood for local people through involving them in activities of forest management in the park.



**GÌN GIỮ THIÊN NHIÊN, VĂN HÓA LÀ GÌN GIỮ TƯƠNG LAI
SAVE NATURE, SAVE CULTURE, SAVE FUTURE**

PRINCIPLE OF COLLABORATIVE FOREST MANAGEMENT WITH LOCAL PEOPLE

To build a benefit sharing mechanism from forests and comprehensive ecosystem services based on clearly identifying the roles, responsibilities, benefits and obligations of forest owner and local community is a decisive principle of community-based forest management in the park.





GÌN GIỮ THIÊN NHIÊN, VĂN HÓA LÀ GÌN GIỮ TƯƠNG LAI SAVE NATURE, SAVE CULTURE, SAVE FUTURE

ACTIVITIES TO BUILD COMMUNITY-BASED FOREST MANAGEMENT IN THE PARK

I. Forming legal foundations for community-based forest management

- Consulting local communities in building The Operational Management Plan of the park; Discussing with local people on rights, benefits, responsibilities and obligations of local people and the park in forest management activities;
- Establishing Villages Regulations in five target villages under JICA-Bidoupnuiba project;





**GÌN GIỮ THIÊN NHIÊN, VĂN HÓA LÀ GÌN GIỮ TƯƠNG LAI
SAVE NATURE, SAVE CULTURE, SAVE FUTURE**

ACTIVITIES TO BUILD COMMUNITY-BASED FOREST MANAGEMENT IN THE PARK

I. Forming legal foundations for community-based forest management (cont.)

- Establishing A Regulation on Collaborative forest management with Local People in a village under EU funded TFF project;
- Building Benefit Sharing Mechanisms in five target villages under JICA-Bidoupnuiba project and other two villages under WB funded VCF project.





GÌN GIỮ THIÊN NHIÊN, VĂN HÓA LÀ GÌN GIỮ TƯƠNG LAI SAVE NATURE, SAVE CULTURE, SAVE FUTURE

ACTIVITIES TO BUILD COMMUNITY-BASED FOREST MANAGEMENT IN THE PARK

II. Livelihood improvement

- Allocating forests to local people to protect (PFES program)

Year	2011	2012	2013
Area (ha)	48,679.92	49,695.76	52,689.75
Number of HHs	1,335.00	1,366.00	1,466.00
Budget (VND)	11,203,412,288.00	16,247,909,520.00	17,141,430,200.00
Average/HH/year	8,392,069.13	11,894,516.49	11,692,653.62



GÌN GIỮ THIÊN NHIÊN, VĂN HÓA LÀ GÌN GIỮ TƯƠNG LAI SAVE NATURE, SAVE CULTURE, SAVE FUTURE

ACTIVITIES TO BUILD COMMUNITY-BASED FOREST MANAGEMENT IN THE PARK

II. Livelihood improvement (cont.)

- Involving local people in the activities of planting, maintaining, tending forests;
- Building livelihood development models for local HHs: Planting banana, raising pigs, ducks, chickens under VCF project
- Building the models of Environmental Friendly Livelihood Options under JICA project for local HHs in target villages: organic coffee, safe vegetable cultivation





GÌN GIỮ THIÊN NHIÊN, VĂN HÓA LÀ GÌN GIỮ TƯƠNG LAI SAVE NATURE, SAVE CULTURE, SAVE FUTURE

ACTIVITIES TO BUILD COMMUNITY-BASED FOREST MANAGEMENT IN THE PARK

II. Livelihood improvement (cont.)

- Establishing a **Revolving Credit Fund** in a village under TFF project (10,000 EURO) ;

- Establishing **Revolving Fertilizer Funds** and **Village Development Funds** in target villages under JICA project;

- Involving local people in the activities of Community-based Ecotourism:
 - ✓ **Environment interpreter on trails and in Visitor Center**
 - ✓ **Providing tourism services: Transporters, Porters, Food**
 - ✓ **Gong performance**
 - ✓ **Selling traditional weaving products**



**GÌN GIỮ THIÊN NHIÊN, VĂN HÓA LÀ GÌN GIỮ TƯƠNG LAI
SAVE NATURE, SAVE CULTURE, SAVE FUTURE**

ACTIVITIES TO BUILD COMMUNITY-BASED FOREST MANAGEMENT IN THE PARK





**GÌN GIỮ THIÊN NHIÊN, VĂN HÓA LÀ GÌN GIỮ TƯƠNG LAI
SAVE NATURE, SAVE CULTURE, SAVE FUTURE**

ACTIVITIES TO BUILD COMMUNITY-BASED FOREST MANAGEMENT IN THE PARK





GÌN GIỮ THIÊN NHIÊN, VĂN HÓA LÀ GÌN GIỮ TƯƠNG LAI SAVE NATURE, SAVE CULTURE, SAVE FUTURE

ACTIVITIES TO BUILD COMMUNITY-BASED FOREST MANAGEMENT IN THE PARK

III. Capacity Strengthening

- Trained on Identification, propagation and sustainable utilization of NTFP;
- Trained on collaborative forest patrolling;
- Trained on identification of species of high conservation values





**GÌN GIỮ THIÊN NHIÊN, VĂN HÓA LÀ GÌN GIỮ TƯƠNG LAI
SAVE NATURE, SAVE CULTURE, SAVE FUTURE**

ACTIVITIES TO BUILD COMMUNITY-BASED FOREST MANAGEMENT IN THE PARK

III. Capacity Strengthening

- Trained on techniques of cultivating species provided by the projects
- Trained on techniques of organic coffee and safe vegetable cultivation through FFSs





**GÌN GIỮ THIÊN NHIÊN, VĂN HÓA LÀ GÌN GIỮ TƯƠNG LAI
SAVE NATURE, SAVE CULTURE, SAVE FUTURE**

ACTIVITIES TO BUILD COMMUNITY-BASED FOREST MANAGEMENT IN THE PARK

III. Capacity Strengthening

- Trained on tourism guide, environment interpreter;
- Trained on first aid
- Trained on English for tourism
- Trained on gong performance
- Trained on brocade weaving

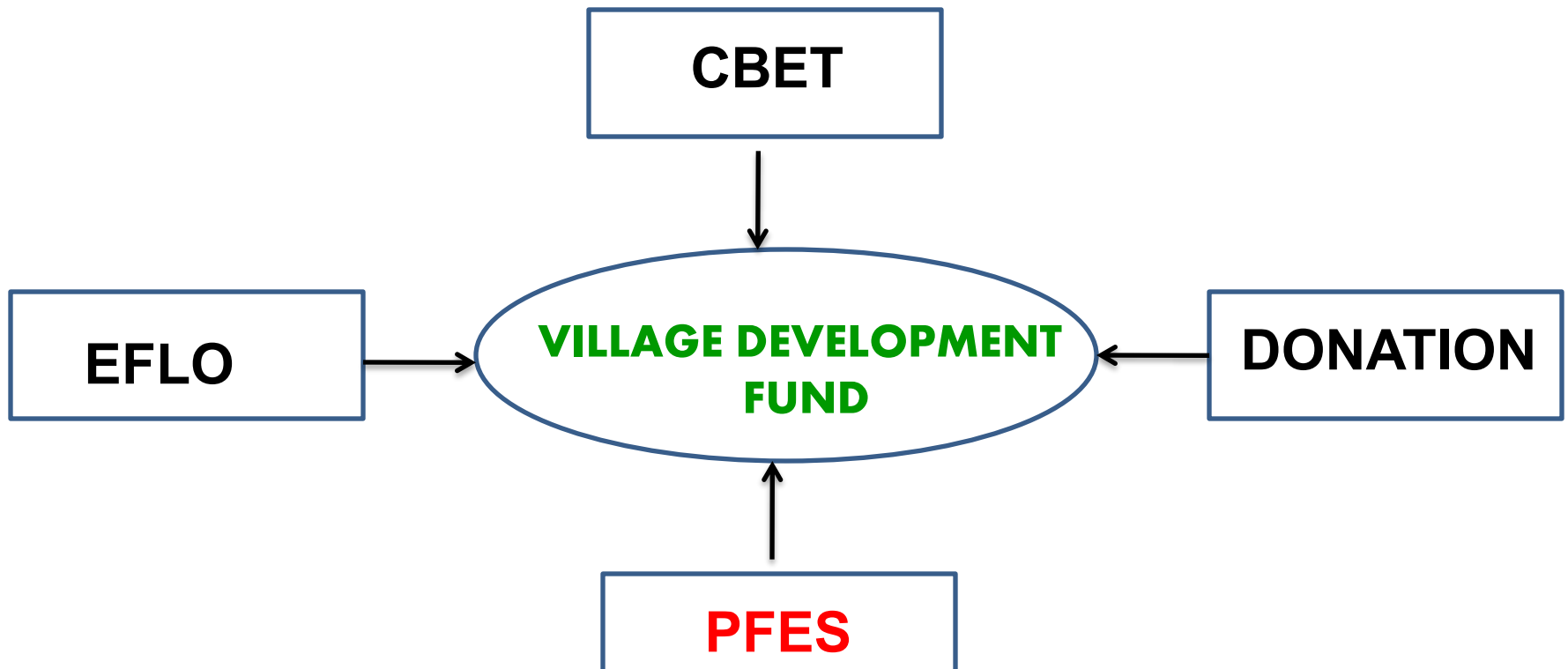




**GÌN GIỮ THIÊN NHIÊN, VĂN HÓA LÀ GÌN GIỮ TƯƠNG LAI
SAVE NATURE, SAVE CULTURE, SAVE FUTURE**

ACTIVITIES TO BUILD COMMUNITY-BASED FOREST MANAGEMENT IN THE PARK

IV. Forming a Sustainable Finance Mechanism for VDF





**GÌN GIỮ THIÊN NHIÊN, VĂN HÓA LÀ GÌN GIỮ TƯƠNG LAI
SAVE NATURE, SAVE CULTURE, SAVE FUTURE**

ACTIVITIES TO BUILD COMMUNITY-BASED FOREST MANAGEMENT IN THE PARK

IV. Forming a Sustainable Finance Mechanism for VDF

- ✓ All donation from visitors sent to VDF

- ✓ 5% of benefit from providing services of environmental interpretation, transportation porter, Gong performance, weaving product;

- ✓ 5% of benefit increased from organic coffee and safe vegetable cultivation

- ✓ To propose to contribute 5% of PFES to VDF



**GÌN GIỮ THIÊN NHIÊN, VĂN HÓA LÀ GÌN GIỮ TƯƠNG LAI
SAVE NATURE, SAVE CULTURE, SAVE FUTURE**

EFFECTIVENESS OF IMPLEMENTING COMMUNITY-BASED FOREST MANAGEMENT

- ✓ Better relationship between NP and local communities
- ✓ Less conflict between rangers of the park and local communities
- ✓ More involving of communities in management activities of the park
- ✓ Biodiversity of the park is conserved better



GÌN GIỮ THIÊN NHIÊN, VĂN HÓA LÀ GÌN GIỮ TƯƠNG LAI
SAVE NATURE, SAVE CULTURE, SAVE FUTURE

EFFECTIVENESS OF IMPLEMENTING COMMUNITY-BASED FOREST MANAGEMENT

Violations	Number of violations by year			
	2009	2010	2011	2012
Encroachment	41	36	27	16
Illegal logging	7	17	17	6
Illegal NTFP collection	6	0	3	2
Illegal mining	1	5	4	1
Illegal hunting	3	13	6	6
Forest fire	1	5	1	0

THANKS FOR YOUR ATTENTION!