

# **Promoting climate resilient development – M&E as a tool for managing a transformation process**

Guido Geissler  
Strategy and Policy Department  
28 June 2013

# Promoting Climate Resilient Development

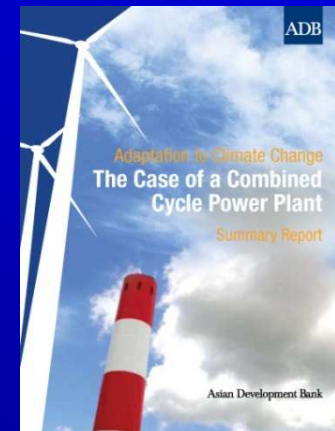
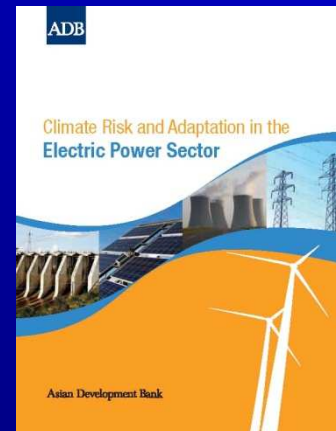
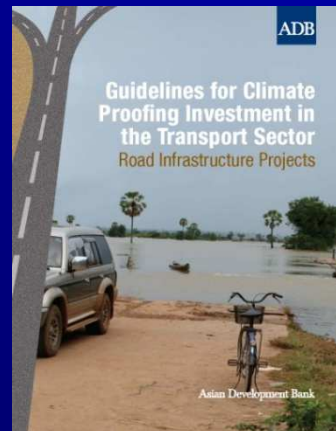
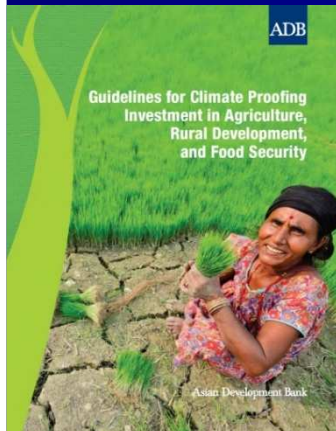
## Expanding Support to DMCs Adaptation Programs

- Mobilizing adaptation finance
- Integrating climate risk management in project preparation
- Development of knowledge products and tools
- Fostering networks and partnerships



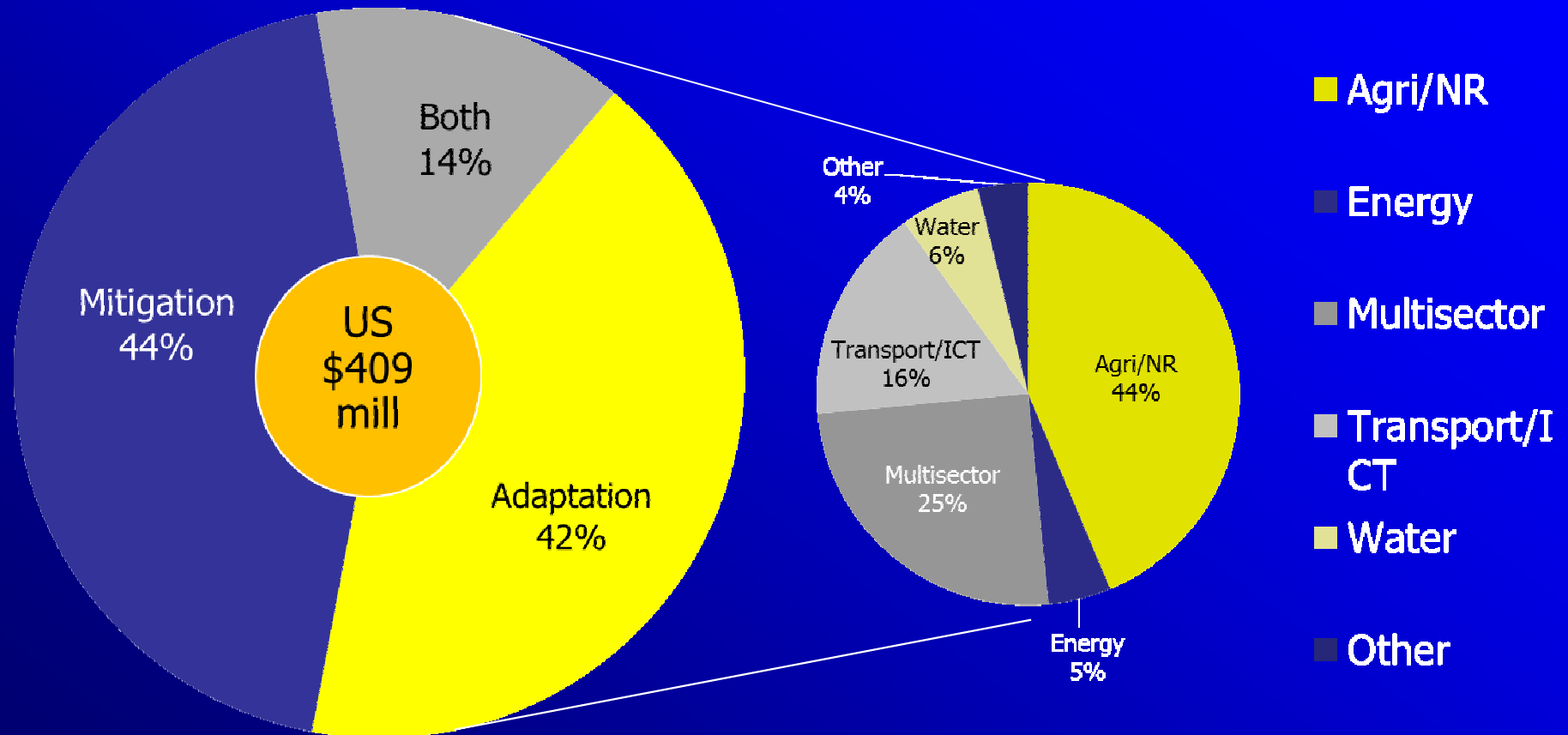
# Promoting Climate Resilient Development

- Increased access to adaptation financing (PPCR, GEF, CCF)
- Developed tools and knowledge products on adaptation
- Organized the establishment of a regional climate consortium
- Provided support to DMCs on integrating adaptation and climate risk management in projects
- Continued support to the Asia Pacific Adaptation Network

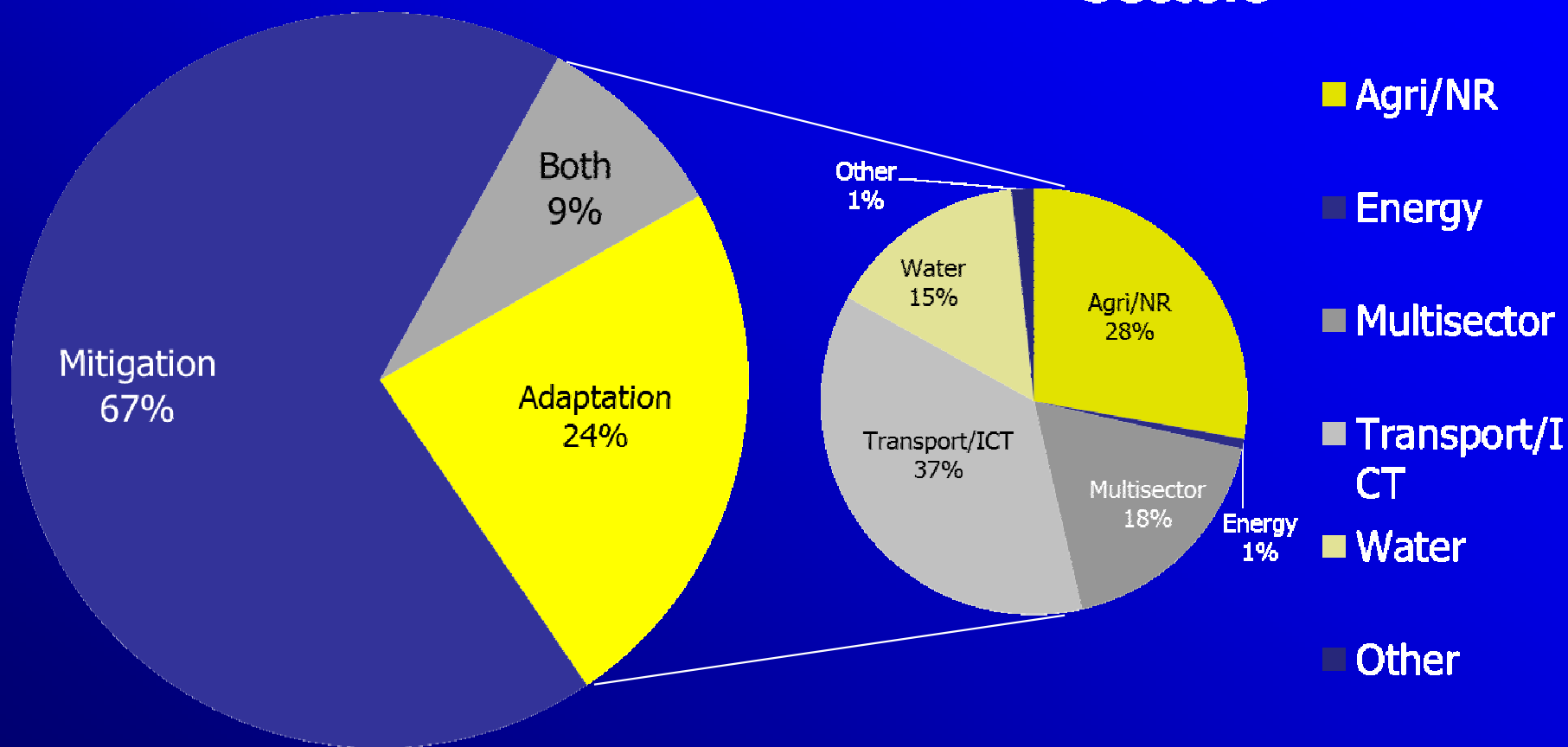


# ADB's Climate Finance Portfolio 2009-2012 – Technical Assistance

## Sectors



# ADB's Climate Finance Portfolio 2009-2012 – Investments



# Implementing a programmatic approach

## What is needed?

**Coherent M&E system** – Indicators need to be part of the national M&E system with clear assigned organizational roles and responsibilities

**Facilitation** – convening power to bring together various stakeholders on a regular basis (at least once a year) to discuss progress and share lessons

**Capacity** – human and technical capacity to consolidate data and prepare reports

## M&E – Lessons learned

- ❖ **The earlier a results framework in place, the better** – retrofitting is very difficult
- ❖ **Strategy -first, indicators –second** – Clarity about key concept, e.g., what does transformation mean (theory of change); results frameworks need clear impact statements – strategic mapping of relationship between expected results
- ❖ **Country/ program vs. Project/program level** – Which level is the central reporting unit; this is important to be clear about primary reporting and secondary reporting or cascading; programmatic approach
- ❖ **Methods, methodologies, indicators** – agreement on results –first, agreement on indicators – second; BUT agreement on methods, methodologies key to get consistent reporting
- ❖ **Ex-ante versus ex-post evaluation** – Evaluation framework needs to be thought about early on – focus on **local** evaluation capacity

# M&E in adaptation – KEY MESSAGES

- ❖ **There is not one solution but MANY!!!** – Let's embrace and appreciate diversity
- ❖ **M&E is not a quick fix!!!** Building a reliable M&E framework requires time to communicate and involve stakeholders
- ❖ **Shared agenda** - We need to work together - not only in learning but also assist and support each other – we need to build capacity in developed and developing countries
- ❖ **Don't forget the "E" (evaluation) in M&E**



# THANK YOU

Guido Geissler

Senior Planning and Policy Specialist

[ggeissler@adb.org](mailto:ggeissler@adb.org)