

Technology Development and Transfer in Malaysia - 25 Years of Solving the Puzzle



Dr. Theng Lee Chong
SoluWaste Management Consultants
Kuala Lumpur, Malaysia

Background – turning dumpsite into proper landfill

- ✓ Waste management is traditionally a problem in Malaysia, under the management of the local authorities
 - Open dumping / Open burning
 - Leachate contamination
 - Bad smell / Hygiene problem

} Alarming stage (1987)
- ✓ In 1987, the Malaysia Government requested the Japan Government to assist in improving the waste management as a whole, particularly looking at the disposal sites.
- ✓ In 1988, JICA dispatched technical assistance to Malaysia, selected site at Seberang Prai.

1988



1988



1988



Prof. Yasushi Matsufuji (松藤康司教授)



Main Issues Faced

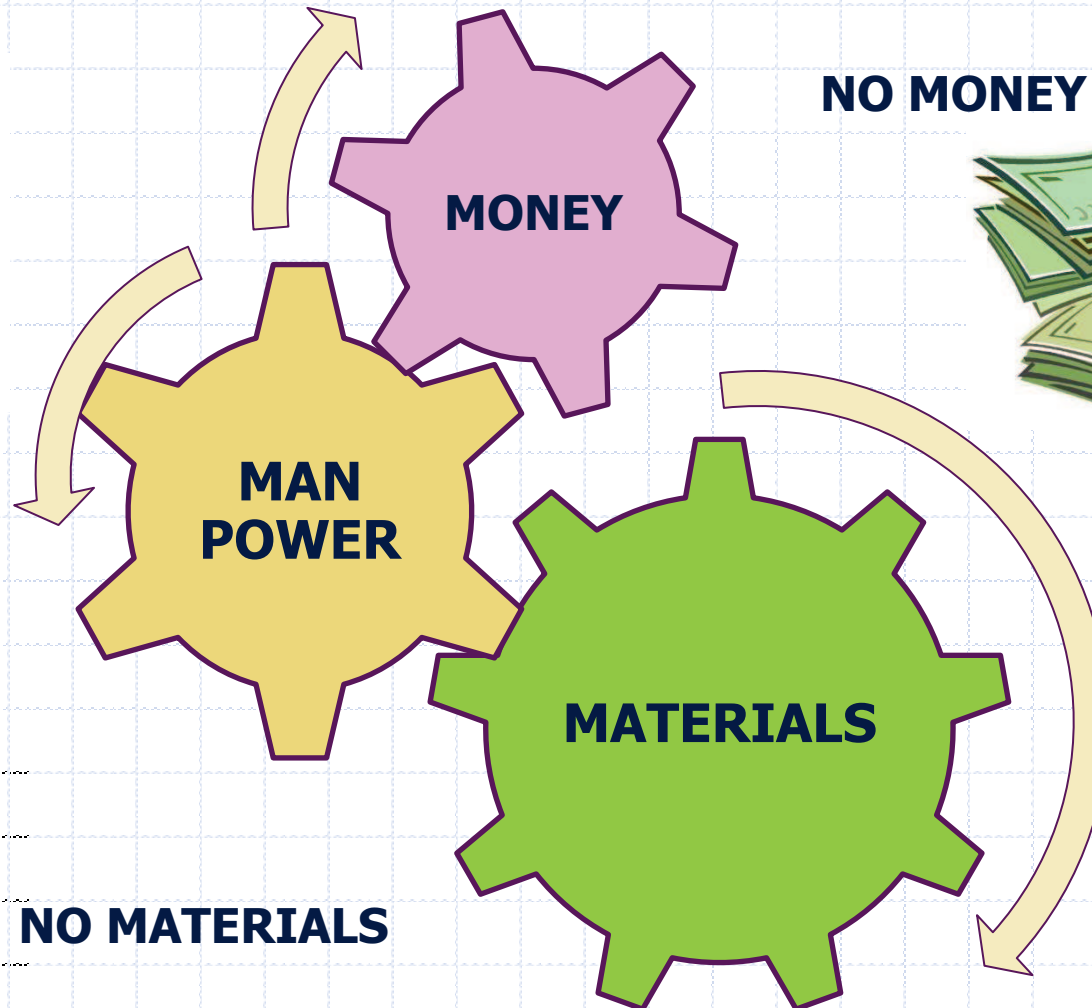
LACK OF 3M



NO MANPOWER




NO MATERIALS



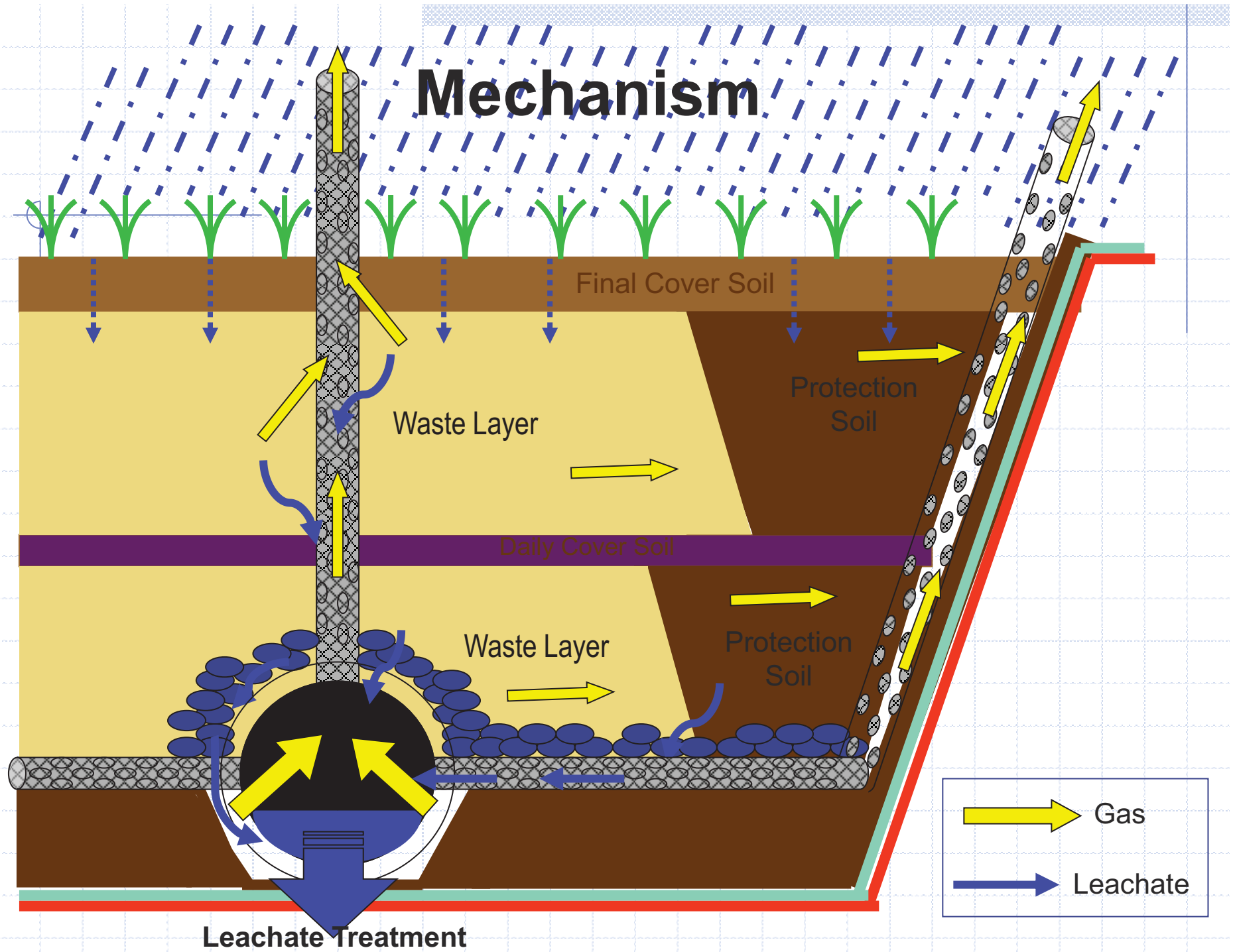
NO MONEY

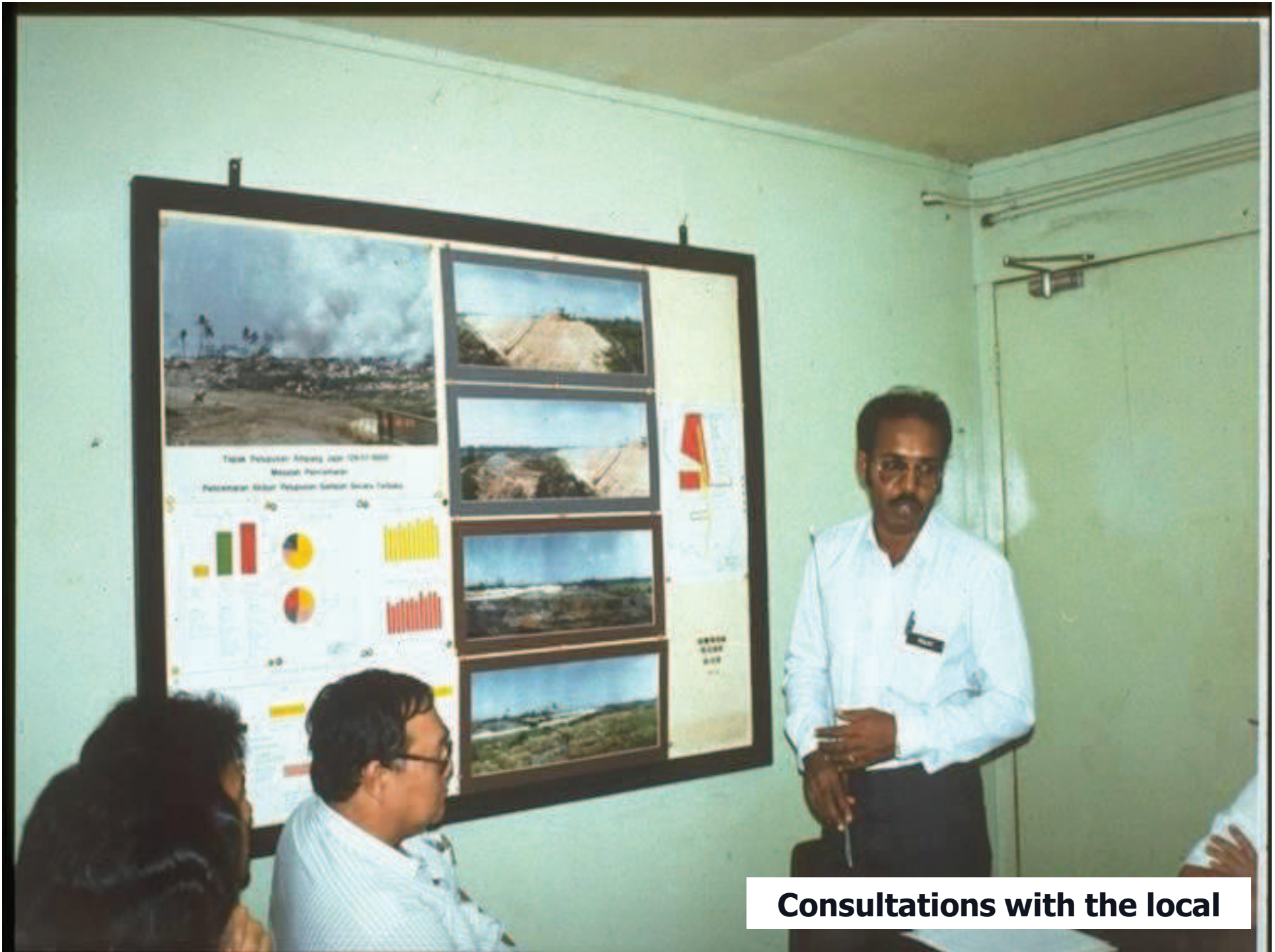




Development of Semi Aerobic Landfill in Malaysia

Mechanism





Consultations with the local



Utilization of local available materials – used metal drums



Utilization of local available materials – used metal drums



Utilization of local available materials – bamboo



Utilization of local available materials – bamboo



Utilization of local available materials – bamboo

Construction of 1st Semi Aerobic Landfill System



Construction of 1st Semi Aerobic Landfill System



1992



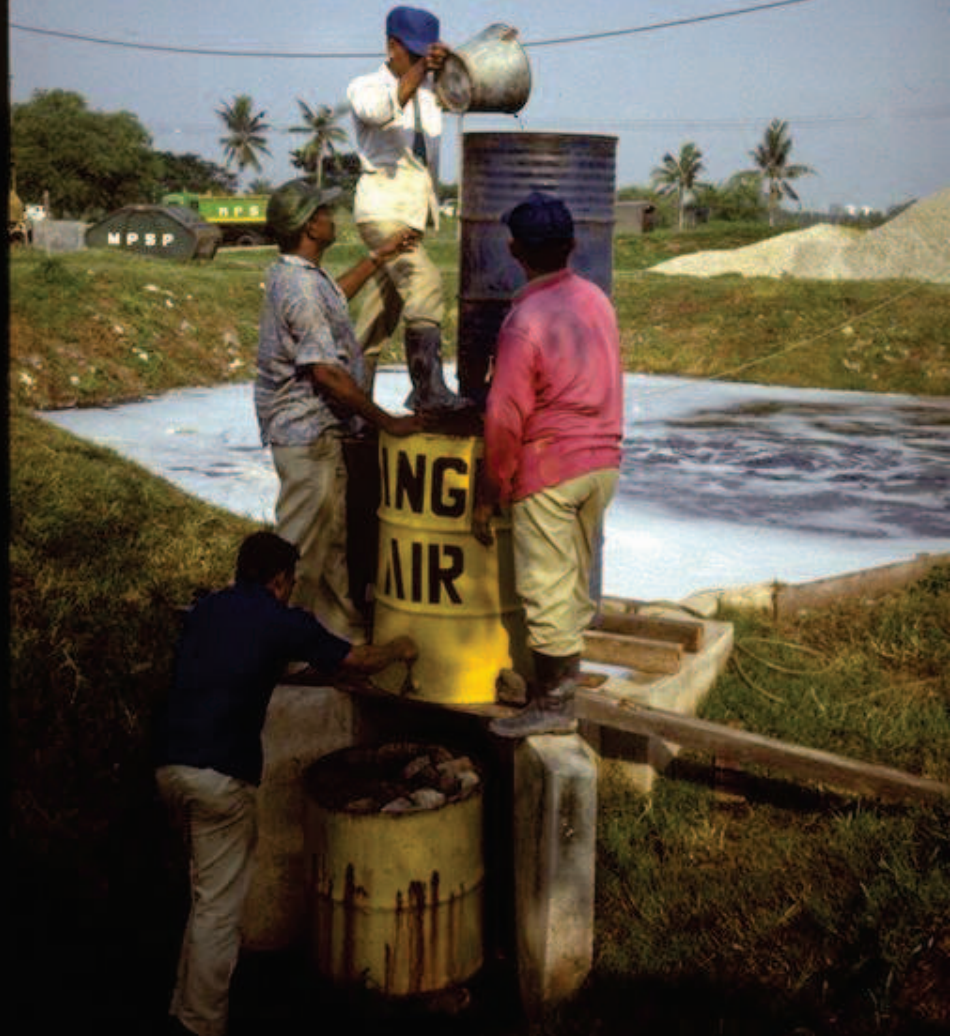
Further improvement of leachate quality



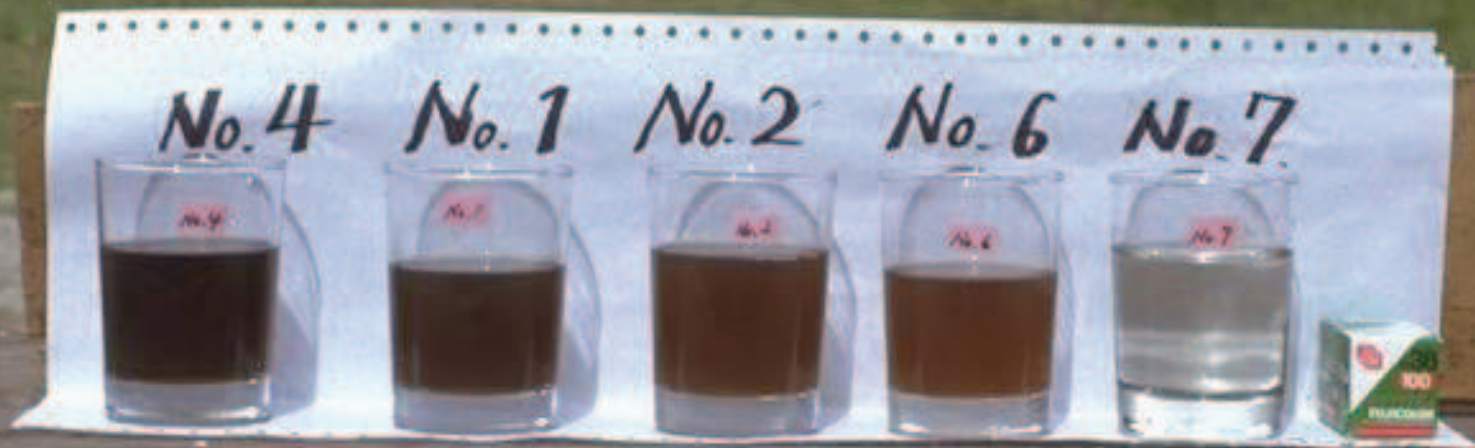
Further improvement of leachate quality

1993

1993 08 10



Leachate Re-circulation and filtration systems



Comparison of Leachate from Anaerobic landfill, semi aerobic landfill and filtrated leachate