



# SPREP

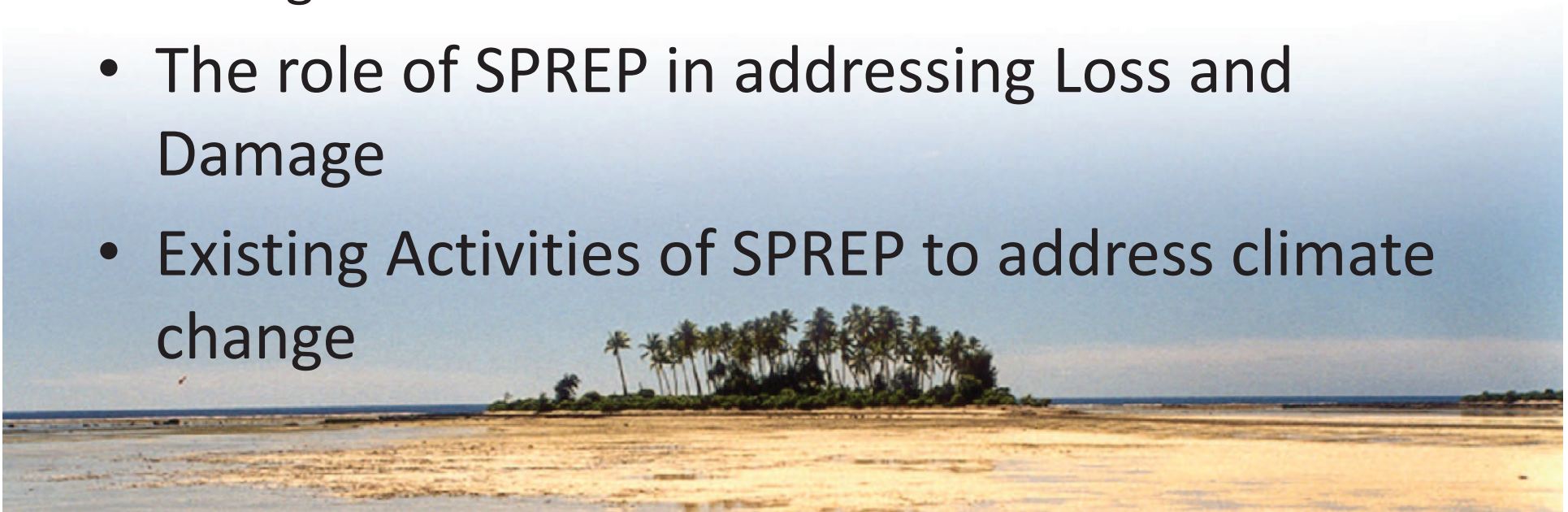
Secretariat of the Pacific Regional  
Environment Programme



How are we addressing Loss and  
Damage in the Pacific?

# Contents

- Loss and Damage in the Pacific
  - International context
  - Regional context
- The role of SPREP in addressing Loss and Damage
- Existing Activities of SPREP to address climate change



# Loss and Damage in the Pacific

Loss and Damage is a  
KEY issue for the  
Pacific Island  
Countries (PICs)

- Climate impacts are worsening, and are costly to national budgets
- PICs have very limited insurance cover even at present for climate related events



- Due to expected worsening impacts, PICs had identified the need for an internationally agreed approach to manage climate change risks and address loss and damage



# Objective of a Loss and Damage mechanism under the UNFCCC

The Objective of the international mechanism is to assist countries to address unavoidable and residual loss and damage to the impacts of climate change.

It would be under guidance of the UNFCCC, with links to adaptation finance



# International mechanism

The mechanism would consist of 2 components:

- 1) Insurance Component – with a SIDS insurance facility
- 2) Rehabilitation Component – to address the progressive negative impacts of climate change



The mechanism would provides incentives for losses and damages to be avoided – i.e. Disaster Risk Reduction and Climate Change Adaptation measures would remain a key component



# The Pacific Policy Context

## Pacific Climate Change Round Table (PCCR)

- Brings together Pacific governments, key agencies, donor partners and civil society groups working on climate change in the Pacific
- Meets biennially
- Agrees on common priorities and actions for the region
- 2011 PCCR: Prioritised the issue of Loss and Damage as key for the region



# SPREP's actions to address Loss and Damage

## Policy Context:

- Continue to support members countries to engage in relevant international and regional policy contexts
  - On site technical policy support
  - Inputs into relevant processes
  - Convener of international and regional experts
- Continue to assist support members in addressing impacts of climate change - Adaptation

# Pacific Adaptation to Climate Change (PACC)

- Implemented in partnership with GEF (Special Climate Change Fund), UNDP, Australian Government and UNITAR
- Assists 14 Pacific Island countries/territories to address national Adaptation needs



# ....PACC

## 3 key sectors:

- Food Security
- Water security
- Coastal protection



# ...PACC

## 3 key components:

- Mainstreaming of adaptation concerns into key sector specific and national level policies
- Capacity building & Awareness raising at the national level to implement climate change adaptation
- Demonstration projects to pilot the implementation of adaptation options

# Climate Change Adaptation and Disaster Risk Reduction actions

## Joint National Action Plans (JNAPs)

- Most disasters in the Pacific are climate related (floods, cyclones, storm surge, drought, health outbreaks etc)
- A coordinated response at the national level to address climate change adaptation (CCA) and Disaster Risk Reduction (DRR)
- Pools together scarce resources and expertise

# JNAPS

- SPREP works in partnership with national governments and regional agencies (Secretariat of the Pacific Community, UNDP etc)
- Cross-sectoral and multi-stakeholder approach
- Endorsed at the highest levels (Cabinet)

# Conclusion

- Loss and Damage is a key issue for the Pacific
- SPREP is assisting member countries to address climate change adaptation and disaster risk management to minimise present and future losses to climate change.
- An International mechanism will still be necessary to address those impacts and losses which can not be avoided.





# SPREP

Secretariat of the Pacific Regional  
Environment Programme

