

STORM

Loss & Damage

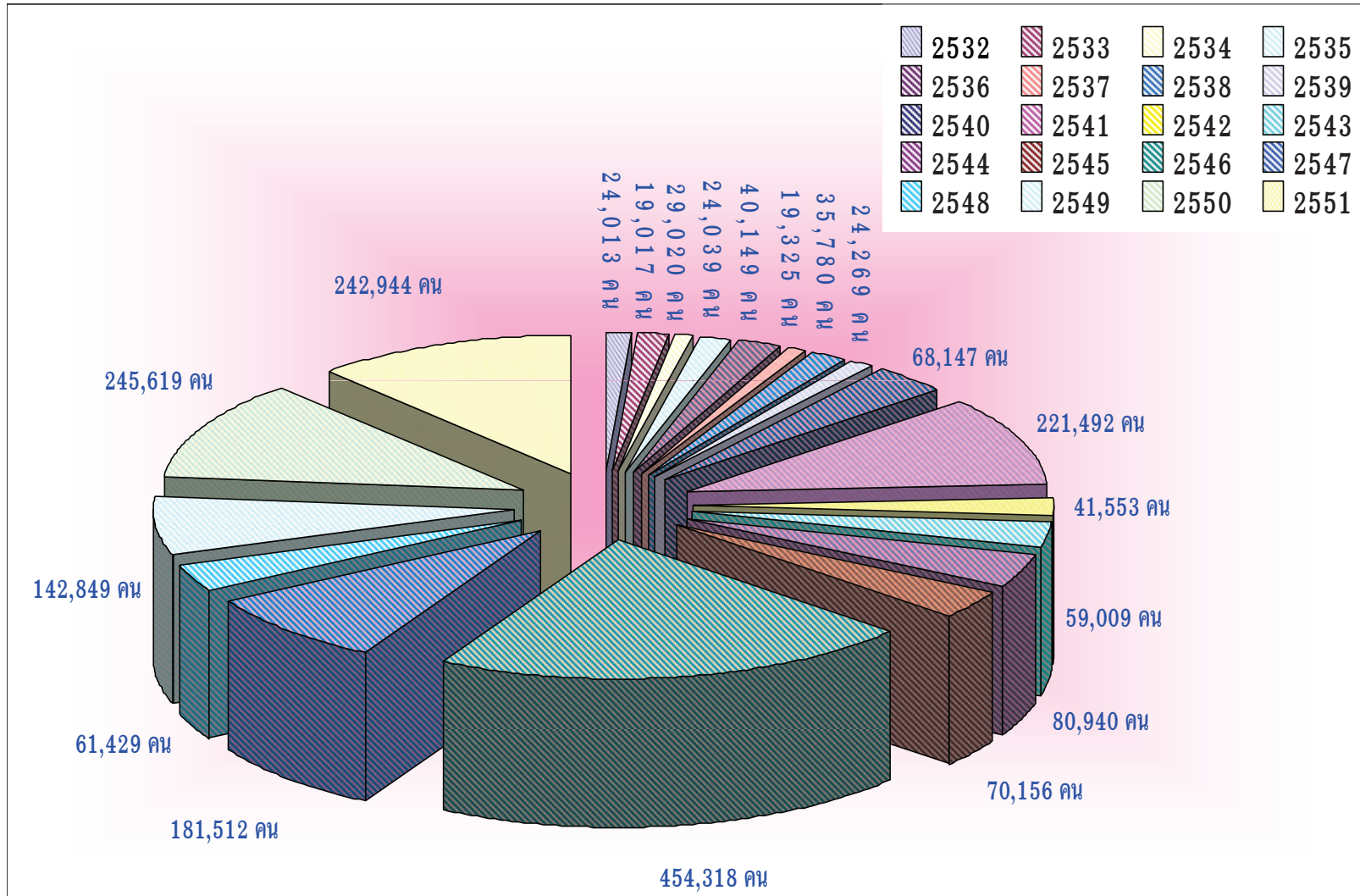
STORM



Year	Frequency	Affected Area			
		Provinces	District	Sub-District	Villages
1989	507	63	532	503	610
1990	907	57	761	899	964
1991	705	58	694	658	732
1992	3,125	62	746	2,665	3,265
1993	836	70	635	813	911
1994	1,073	68	665	957	1,298
1995	616	63	597	547	645
1996	3,026	68	679	2,997	3,258
1997	2,993	70	660	2,470	2,999
1998	2,816	66	685	2,530	2,986
1999	986	65	597	910	1,019
2000	960	62	624	945	1,102
2001	1,061	70	642	1,089	1,089
2002	594	67	704	1,514	2,579
2003	3,213	76	767	2,941	7,617
2004	3,834	76	812	2,876	6,895
2005	1,313	57	394	1,610	2,017
2006	1,883	65	567	2,381	4,096
2007	2,233	67	524	2,112	6,097
2008	1995	65	570	2603	7926

Year	Storm Loss & Damage												
	Affected People	Affected household	Fatality (person)	Injured (person)	Total Damage (House)	Partly Damage (House)	Building	Hotel	Factory/ Mills	Temple/ School	Boat/ Fishery	Agricultural Area (Rai)	Damage Values
1989	24,013	4,590	22	9	1,013	12,269	28	12	0	0	0	5,457	14,056,053
1990	29,020	8,123	126	118	6,147	24,156	79	0	0	0	0	10,146	172,023,839
1991	19,017	6,930	43	55	987	17,039	120	14	0	0	0	8,146	75,850,000
1992	24,039	5,459	90	50	1,297	17,123	37	0	0	0	0	9,001	193,060,000
1993	40,149	11,039	19	31	3,001	24,017	74	0	0	0	0	10,134	204,434,000
1994	19,325	3,269	8	46	1,456	34,012	69	0	0	0	0	6,502	120,275,946
1995	35,780	9,017	14	51	893	19,127	85	0	0	0	0	7,032	100,414,000
1996	24,269	6,598	73	42	2,037	30,741	49	0	0	0	0	4,123	335,905,253
1997	68,147	14,039	48	66	1,490	19,998	58	0	0	0	0	3,256	518,639,692
1998	221,492	61,568	90	70	2,707	55,358	96	0	0	0	0	7,788	371,437,070
1999	41,553	10,729	38	55	223	9,938	47	0	0	0	0	19,329	192,215,567
2000	59,009	18,058	9	81	251	22,553	32	0	0	0	0	1,022	271,476,754
2001	80,940	32,100	6	19	12,172	10,745	0	0	0	0	0	8,581	501,018,658
2002	70,156	23,070	18	11	1,132	20,599	577	0	0	90	0	9,306	213,337,876
2003	454,318	146,024	74	434	309	97,637	0	0	14	0	0	50,834	457,429,782
2004	181,512	70,818	73	63	53,133	736	0	0	16	0	0	32,158	398,416,887
2005	61,429	32,449	13	0	36	19,258	0	0	1	93	20	33,048	148,871,750
2006	142,849	30,296	29	39	283	30,044	0	0	0	159	20	68,286	92,244,108
2007	245,619	72,783	10	71	158	47,639	0	0	0	431	18	18,163	234,547,154
2008	242944	78606	15	30	124	58319	0	0	0	153	0	98619	227549741
Total	2,085,580	645,565	818	1,341	88,849	571,308	1,351	26	31	926	58	410,931	4,843,204,130

Storm Affected People (1989-2008)

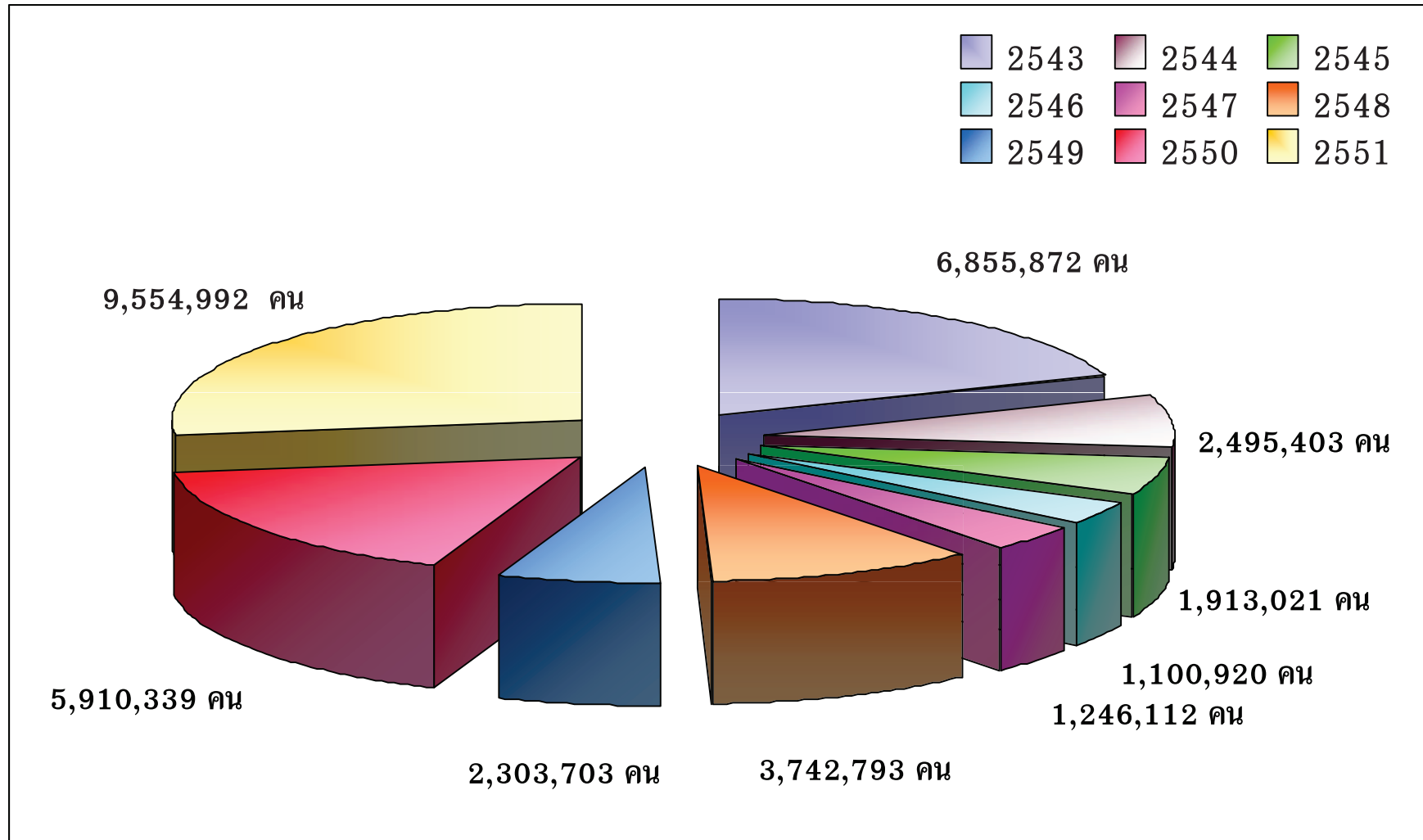


COLD SPELL
Loss & Damage

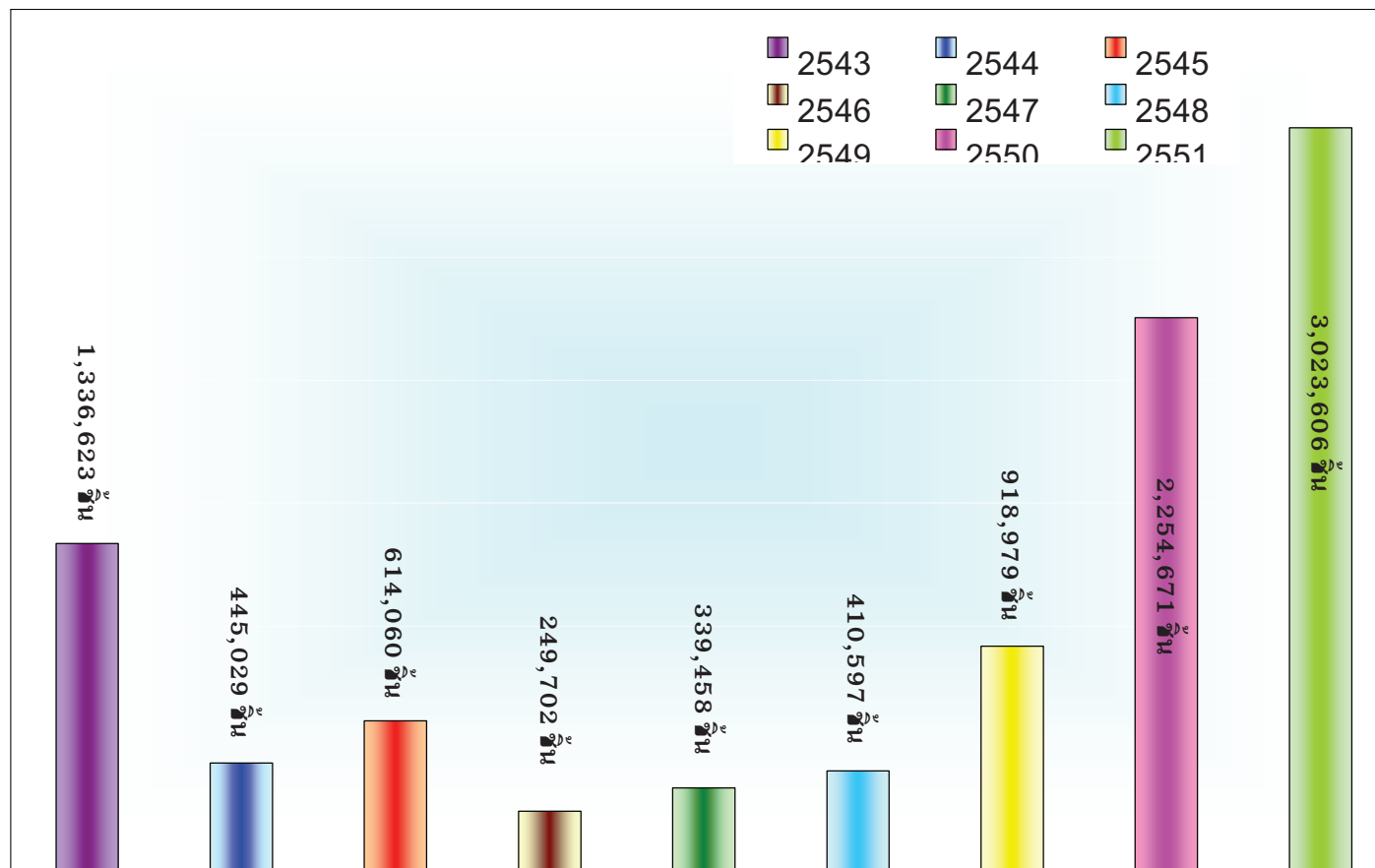
Cold Spells

Year	Affected Area				Loss & Damage					Assistant				
	Provinces	District	Sub-District	Villages	Affected People	Affected household	Fatality (person)	Livestock	Damage Values	Blanket	Knitting Blanket	Clothes	Others	Total
2000	43	358	2,105	25,106	6,855,872	1,344,064	0	34,804	308,458,160	794,314	0	542,309		1,336,623
2001	39	423	2,208	23,495	2,495,403	440,888	1	24,168	17,168,200	368,807	38,057	38,165		445,029
2002	42	518	2,922	31,125	1,913,021	871,229	1	0	No report	465,117	66,513	82,430		614,060
2003	22	217	1,338	14,075	1,100,920	316,973	0	0	No report	194,495	14,040	41,167		249,702
2004	32	221	1,142	9,728	1,246,112	521,225	0	0	No report	320,833	1,332	17,293		339,458
2005	25	337	2,402	22,542	3,742,793	1,131,313	0	0	No report	358,013	3,367	36,016	13,201	410,597
2006	47	516	3,375	35,898	2,303,703	821,999	0	0	No report	724,525	59,713	99,352	35,389	918,979
2007	48	522	3,312	34,460	5,910,339	1,992,912	0	0	No report	1,877,580	85,621	259,248	32,222	2,254,671
2008	49	568	4,417	48,470	9,554,992	3,780,051	0	0	No report	2,853,151	15,544	142,343	12,568	3023606
Total					35,123,155	11,220,654	2	58,972	325,626,360	7,956,835	284,187	1,258,323	93,380	9,592,725

Cold Spells Affected People (2000-2008)



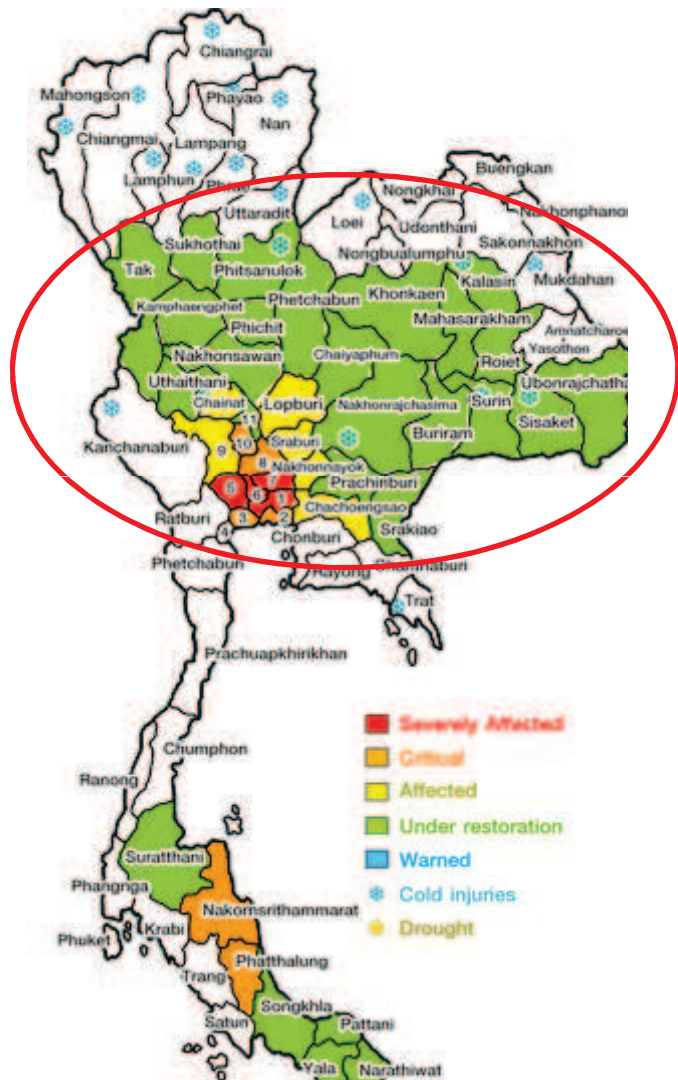
Cold Spells Victim Assistance (2000-2008)



2011 Thailand's Flood Situation

- **Since July this year, Thailand has been affected by a monsoon and three tropical storms – Hai Ma, Nok Ten, Hai Tang, and Nalgae. As a result, most of big reservoirs were almost full from rainwater. At the same time, a huge volume of run off causes flood in all region of the country.**

Impact of Flood



• 65 Provinces

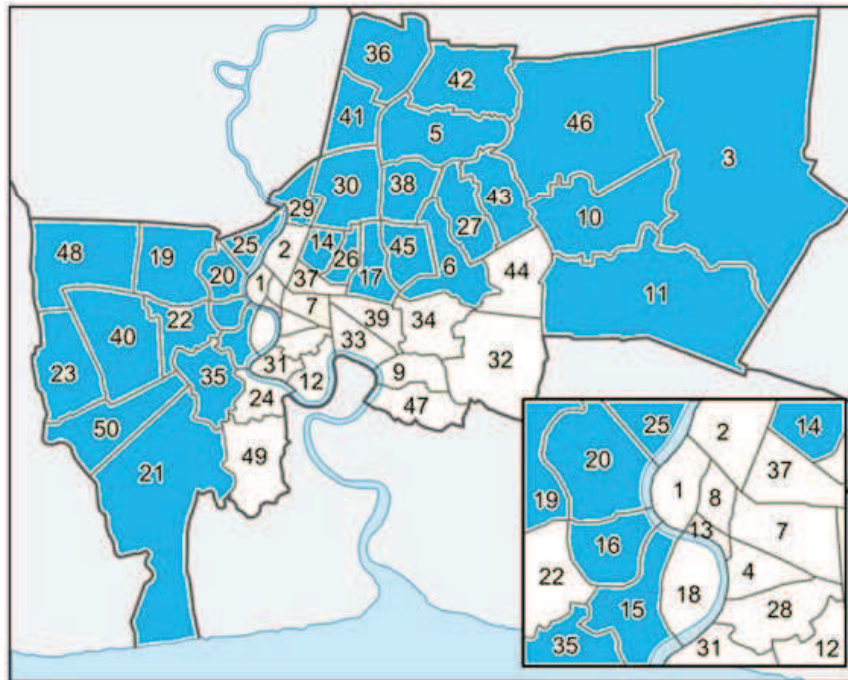
- North 16 Provinces
- Northeast 19 Provinces
- Central 14 Provinces, incl. BKK
- East 8 Provinces
- South 8 Provinces

*picture as of DEC 5, 2011

(www.thaiflood.com)

Flood Affected area in BMA

- 31 Districts



***As of NOV 15, 2011**
(http://www.jetro.go.jp/world/asia/th/flood/inundated_khet.html)

FLOOD EFFECTS (JULY 25, 2011-JAN, 2012)

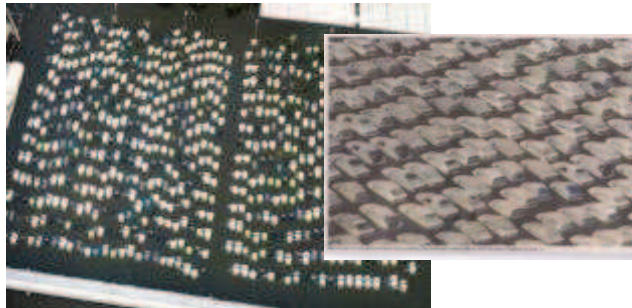
- **Effectuated People** 13.6 million in 4 regions
- **Loss of Life** 813 (as JAN. 8, 2012)
- **Loss of Job** 400,000 people
- **Economic Damage** 43,253.60 million USD
(Source: Thai Chamber of Commerce)

FLOOD EFFECTS (Cont'd)

(JULY 25 – DEC. 1, 2011)

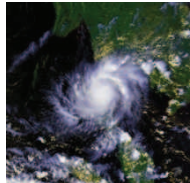
- **Damage cost (by NESDB)**

- Industry	11,920	Million USD
- Agriculture	1,486	Million USD
- Tourism	793	Million USD
- Trade/Retails	2,198	Million USD
- Infrastructures	95	Million USD
	16,462	Million USD





TIMELINE OF THAILAND'S FLOOD MANAGEMENT



JULY 25, 2011

- The arrival of Nock-Ten



OCT 8, 2011

- Establishment of Flood Relief Operation Center (FROC) (at Don Muang Airport)



NOV 4, 2011

- Establishment of Flood Recovery Management Structure



AUG 25, 2011

- Preliminary Emergency Operation Center for Flood (at Ministry of Interior)



OCT 29, 2011

- FROC moved from Don Muang Airport to Energy Complex



CONCLUSION

- Disaster's trend is increasing and makes more people affected, loss and damage
- Disaster in one country is no longer one state's problem but a global problem. A large-scale disaster can be successfully managed by means of bold integrated efforts among stakeholders; private, public, academia, and civil society, along with the cooperation from international community.



Proactive Prevention, Adversity Mitigation, Rehabilitation and Rescue, Are the Spirit of DDPM

Department of Disaster Prevention and Mitigation

Ministry of Interior

Thailand

www.disaster.go.th

