

# *Adaptation and Development Planning*

**Yulia Suryanti**

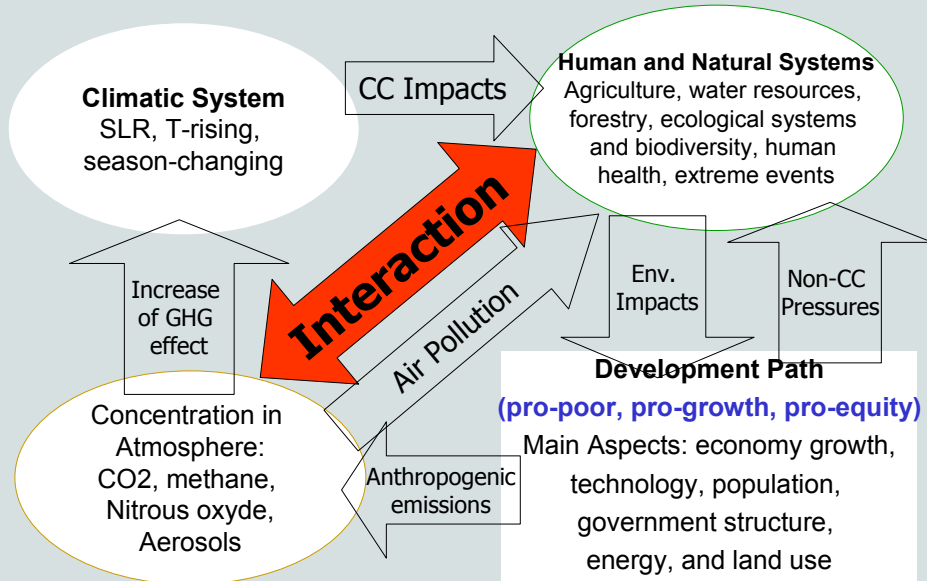
Sub-Div for Adaptation to Climate Change  
Ministry of Environment  
Republic of Indonesia

17th Asia Pacific Seminar on Climate Change  
Bangkok-Thailand, 31 July-3 August, 2007

## Outline:

- Climate Change and Development
- Current Activities/Programs relating to Adaptation to CC in Indonesia
- Key Points on Adaptation
- Things should be done

# Climate Change dan Development



## Current Activities/Programs relating to adaptation to climate change (1)

- **Trees planting:**
  - » National Movement on Forest and Land Rehabilitation 2003-2009 → 3M hectares
  - » Special Allocation Fund 2003-2005 → 58,580 hectares
  - » Perhutani, year 2003-2006 → 304,544 hectares
  - » HTI/ HPHTI-industrial plantation, year 2003-2006 → 9,6 M hectares
- **Towards Green Indonesia Program**
  - » To implement community based re-greening in relation to rehabilitation of land and forest degradation, through incentive allocation for district or regency governments who has good performance in implementing the Toward Indonesia Green
- **Water & Climate Workshop (2007): “climate variability and climate change, and their implication in Indonesia” (including Summary for Policy Maker)**
- **Development of National Action Plan on Mitigation and Adaptation to Climate Change → should be reviewed periodically**
- **Development of National Strategies on Adaptation to Climate Change, including the policy framework, adaptation measure, map of “who’s doing what”**

## Current Activities/Programs relating to adaptation to climate change (2)

- Jointly with GTZ: development of adaptation strategies, focus on water resource management
- Development of Adaptation Program [SBSTA Guideline – “5 year program of work”]
- Translating the V&A Assessment Guidance
  - As a guideline for decision makers, in particular in the region or local governments, in establishing or conducting adaptation programs
- Agriculture → food security: land & water conservation, capacity building (Climate Field School), food diversification, technology of cultivation (plantation varieties), self-sufficient energy program (biogas)
- Rising awareness → mainstream adaptation
  - Use the environmental events: CSD events, ASEAN events, Social events (national jamboree, open debate, talk show), environmental program in every sector
  - The COP13 event in Indonesia: a quantum leap for rising awareness process at the high level decision makers (including the President) → Finance Ministerial Meeting, Dec 2007
- Other: *Second National communication*

## Key Points on Adaptation

- a) Mainstream adaptation issue into national development policies and planning
  - b) Adaptation is a key aspect which should be an agenda in national planning → for establishing the development path which has climate-resilience and implement climate-friendly economic development
  - c) Sector integration should be in line with the regional planning and suitable for the area
- Case study or real program as initiation program gives the real example

## Adaptation agenda in the national development

Urgent Action  
and  
Short-term Actions  
on Adaptation to climate  
change

Mid-term Actions  
and  
Long-term Actions  
on Adaptation to climate  
change

*Should be in  
line and  
incorporated  
with  
Long-term,  
Mid-term and  
Annual  
Development  
Plan*

## Adaptation agenda in the national development should be planned for different time-frames:

- Urgent Action and Short-term Actions

Focusing on building the adaptive capacity and resilience for current climate variability

- accurate-reliable-and-accessible climate information (for planning, anticipation),
- information disseminating on climate change in every level of community (participation of NGOs, stakeholders and private sectors),
- risk management program in climate-related events (e.g.: program on re-forestation in the degraded lands),
- capacity building to mainstream adaptation issue into national plan and into program in every key sector, infrastructure design

- Mid-term Actions and Long-term Actions

Targeting on the development of infrastructure system, planning system, and key sector development, re-structuring the regional planning → community resilience

# Things should be done (1)

- Area of activities: coastal, marine and fisheries, urban, agriculture, water resources, infrastructure, upland areas, flooding areas
- Pilot projects on adaptation to climate change → can be replicated in the future (the other regions with similar conditions)
- Capacity building to mainstream adaptation issue into national plan and programs in every key sector
- Agriculture
  - » Enhancing the capability and capacity building on climate prediction → to get the accurate-reliable-and-accessible climate information (planning, anticipation), to avoid the huge loss due to the occurrence of extreme events
  - » Food diversification for food security, in particular in the agriculture areas which are currently facing the long-drought.
- Forestry and water resource
  - » Revitalization of “*water catchments area*”, such as better integrated watershed management, rehabilitation of degraded land, soil conservation by “*terasering*” and absorption well → for avoiding the long-drought or even floods and landslides
  - » Peatland rehabilitation and sustainable peatland management

# Things should be done (2)

- Forestry and water resource
  - » Revitalization of “*water catchments area*”, such as better integrated watershed management, rehabilitation of degraded land, soil conservation by “*terasering*” and absorption well → for avoiding the long-drought or even floods and landslides
  - » Peatland rehabilitation and sustainable peatland management
- Coastal and fisheries
  - » Inventory of activities in coastal area and conduct *Integrated Coastal Management* (ICM), mainstream the adaptation issue into the existed government programs (incl. local government’s program)
    - rehabilitation and reclamation in the area, such as mangrove plantation and other activities which are suitable
  - » SLR impact management and sea water intrusion management
  - » Irrigation construction for freshwater fisheries and tidal-lands, taking into consideration the regional planning and sea level rise
- Infrastructure
  - » Review on “*design criteria*” of buildings, roads, drainage
    - climate proofing infrastructure
- Public Health Program → for outbreak preventions (water borne diseases or vector borne diseases)

# Conclusion: adaptation actions!!!

## **Adaptation Program and Activities:**

- **Good governance = how to mainstream to other relevant sectors**
  - » Approach: mainstream adaptation issue into national development planning, rising awareness (including for high level decision makers in every sector of development, communities and stakeholders) → both top down and bottom up approach
  - » Urgent need to revitalize the development path concept  
→ pro-poor, pro-growth, pro-equity  
**AND pro-environment**
- **Other Key points that are needed to be conducted:**
  - » In-depth consultation with relevant sectors;
  - » Commitment from key players (finance department; development agencies, implementing sectors; local government; local communities, NGOs)



Thank You  
and good day to you all.....

[ysuryanti@menlh.go.id](mailto:ysuryanti@menlh.go.id)