

Changes in Inspection Results for Rice (Incl. Inspection of All Rice Bags)

inspection period	Number of samples ¹	Number of samples exceeding the standard limit	Percentage of samples exceeding the standard limit
Harvested in ~2011	26,464	592	2.2%
Harvested in 2012	Approx. 10.37 million	84	0.0008%
Harvested in 2013	Approx. 11.04 million	28	0.0003%
Harvested in 2014	Approx. 11.02 million	2	0.00002%
§	§	0	0%
Harvested in 2023 (As of January 9)	Approx. 0.08 million	0	0%

1: For rice harvested in FY2020 onward, inspection of all rice bags has been replaced with random monitoring by stages, and the number of samples decreased.

* Coverage: 17 prefectures including the Tokyo Metropolis designated as inspection targets in the "Concepts of Inspection Planning and Establishment and Cancellation of Items and Areas to which Restriction of Distribution and/or Consumption of Foods Concerned Applies," which compiles basic approaches concerning radioactive materials in foods

Prepared based on the "Inspection Results Concerning Radioactive Cesium Concentrations in Agricultural Products" by the Ministry of Agriculture, Forestry and Fisheries and the "Information about the Food Test" by the Fukushima Association for Securing Safety of Agricultural Products

The production and distribution of rice are managed through measures to inhibit radioactive cesium absorption by the use of potassic fertilizer (p.71 of Vol. 2, "Measures for Reducing Transfer of Radioactive Materials to Crops (2/5) - Measures to Inhibit Radioactive Cesium Absorption through Potassic Fertilization -") and inspection of all bags of harvested rice. In Fukushima Prefecture, planting has been restricted and measures to inhibit radioactive cesium absorption have been taken at Areas under Evacuation Orders, etc. and distribution of rice has been strictly controlled through inspection of all rice bags since FY2012. However, for rice harvested in FY2020 onward, inspection of all rice bags is replaced with random monitoring, except for rice harvested in former Areas under Evacuation Orders, etc.¹, and the number of samples decreased significantly (p.77 of Vol. 2, "Radioactivity Inspection of All Rice Bags by Fukushima Prefecture").

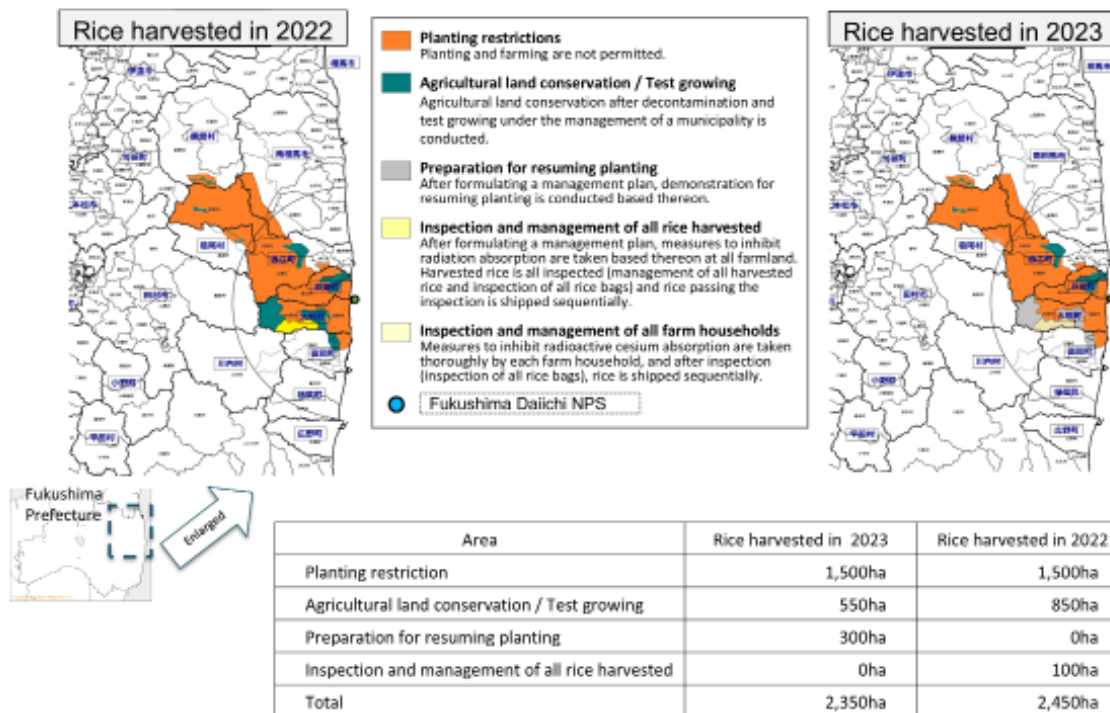
Rice containing radioactive cesium at a level exceeding the standard limit decreased year by year, and there has been none since FY2015 (as of the end of December 2023). This standard limit refers to 100 Bq/kg, which has been applied since April 2012 (in FY2011, provisional regulation values were applied, but tabulation is based on the current standard for the purpose of comparison with the results in and after 2012).

1. Former Areas under Evacuation Orders, etc.: Tamura City, Minamisoma City, Hirono Town, Naraha Town, Tomioka Town, Kawauchi Village, Okuma Town, Futaba Town, Namie Town, Katsurao Village, Iitate Village, and Kawamata Town (former Yamakiya Village)

Included in this reference material on March 31, 2013

Updated on March 31, 2024

Areas Subject to Planting Restrictions for Rice to be Harvested in 2023



*The total amounts do not necessarily match due to rounding

Prepared based on the "Areas Subject to Planting Restrictions for Rice to be Harvested in 2023" by the Ministry of Agriculture, Forestry and Fisheries (MAFF)

Entry and farming are restricted (planting restrictions) in Restricted Areas. In former Habitation Restricted Areas, etc., agricultural land conservation after decontamination and test growing under the management of the relevant municipalities may be conducted (agricultural land conservation/test growing), and in Preparation Areas for Lift of Evacuation Orders, etc., demonstration for resuming planting may be conducted under a management plan formulated by the prefecture and the relevant municipalities (preparation for resuming planting).

In areas not subject to evacuation orders that were under evacuation orders in the previous year or where rice containing radioactive cesium exceeding the standard limit was detected in the previous year, etc., the prefecture and the relevant municipalities formulate a management plan and measures to inhibit radioactive cesium absorption are taken thoroughly and all rice harvested in respective areas is managed and all bags are inspected (inspection and management of all rice harvested).

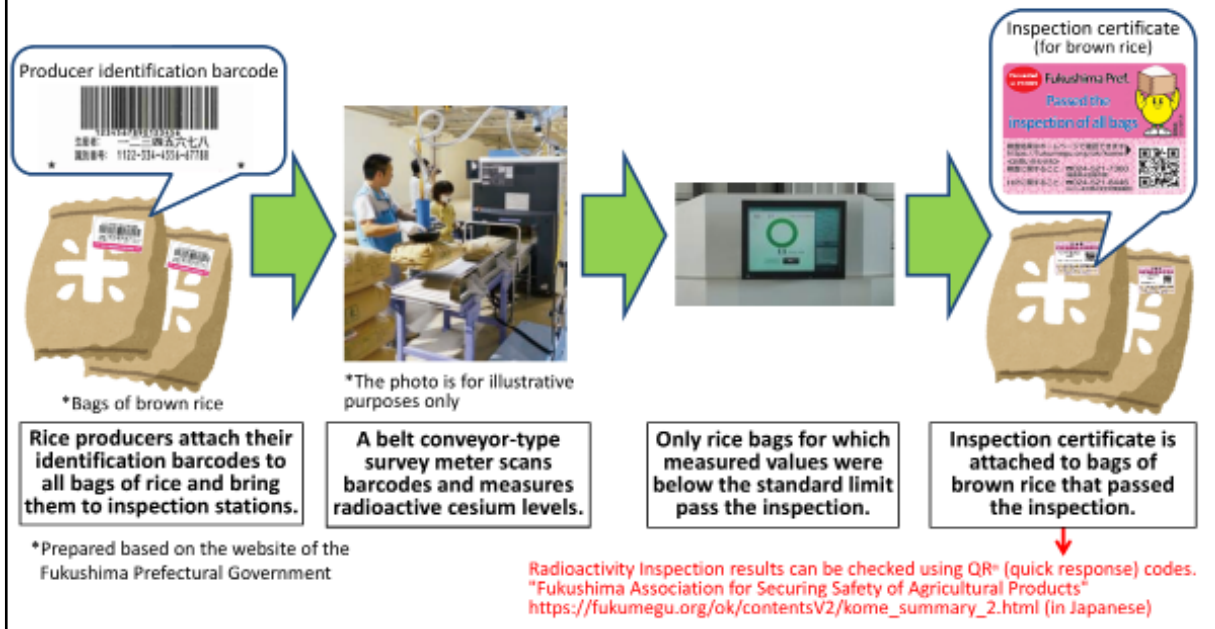
In areas where inspection and management of all rice harvested were obliged in the previous year and where rice containing radioactive cesium exceeding 50 Bk/kg was detected in the previous year, etc., measures to inhibit radioactive cesium absorption are taken thoroughly by each farm household and all farm households are inspected (inspection and management of all farm households). In Fukushima Prefecture, all rice bags are inspected, in principle.

However, Fukushima Prefecture started to adopt random inspection in lieu of inspection of all rice bags by stages starting from rice harvested in 2020.

Included in this reference material on February 28, 2018

Updated on March 31, 2024

Fukushima Prefecture has been inspecting all bags of rice harvested throughout the prefecture since 2012, apart from inspections based on the inspection guideline. For rice harvested in FY2020 onward, inspection of all rice bags has been replaced with random monitoring by stages. From rice harvested in FY2023, Tamura City started to adopt random monitoring.



Since 2012, Fukushima Prefecture has been inspecting all bags of rice harvested throughout the prefecture, not limited to the areas instructed by the national government, as an initiative by the prefecture. For radioactivity inspections, belt conveyor-type survey meters are used.

For rice harvested in FY2020 onward, inspection of all rice bags is replaced with random monitoring, except for rice harvested in former Areas under Evacuation Orders, etc.¹ From now on, the inspection method is to be shifted to random monitoring by stages also in former Areas under Evacuation Orders, etc. From rice harvested in FY2022, Hirono Town and Kawauchi Village, and from rice harvested in FY2023, Tamura City started to adopt random monitoring.

Whether the rice has passed the inspection can be checked as follows.

In the case of brown rice packed in a standard 30-kg paper bag that passed the inspection, an inspection certificate is attached to the paper bag. An identification number is entered in each inspection certificate, and inspection results can be checked on the website of the Fukushima Association for Securing Safety of Agricultural Products.

In the case of polished rice, a polished rice label to prove that it is made from brown rice that passed the inspection is attached. However, as this label is attached on a voluntary basis, some polished rice that passed the inspection may be distributed without the label.

(Partially cited from the website of Fukushima Prefecture “Frequently Asked Questions about Radioactivity Inspection of All Rice Bags”: <https://www.pref.fukushima.lg.jp/sec/36035b/suiden-zenryozenhukurokensa-faq.html> (in Japanese))

1. Former Areas under Evacuation Orders, etc.: Tamura City, Minamisoma City, Hirono Town, Naraha Town, Tomioka Town, Kawauchi Village, Okuma Town, Futaba Town, Namie Town, Katsurao Village, Iitate Village, and Kawamata Town (former Yamakiya Village)