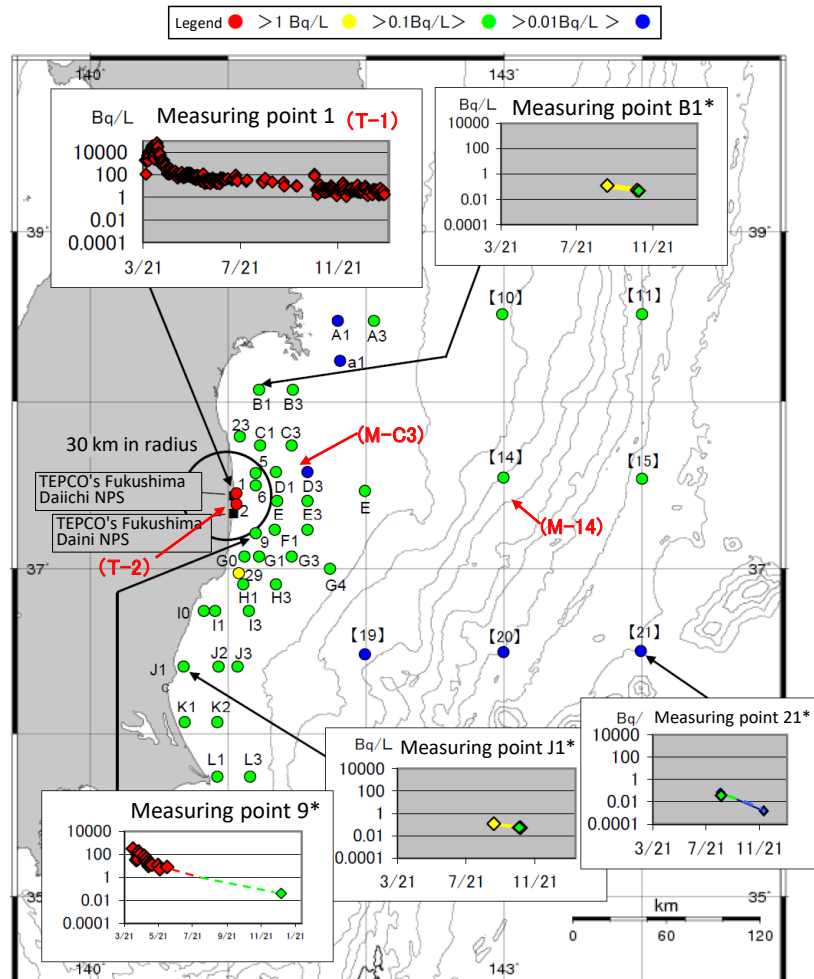


Radioactivity Concentrations in Seawater and Sea-bottom Soil (FY2011)

Seawater

Readings of Radiation Monitoring of Sea Area (October 13 - December 1, 2011) (Cs-137 in Seawater)
Readings of Sea Area Monitoring (Oct13-Dec01, 2011) Cs-137



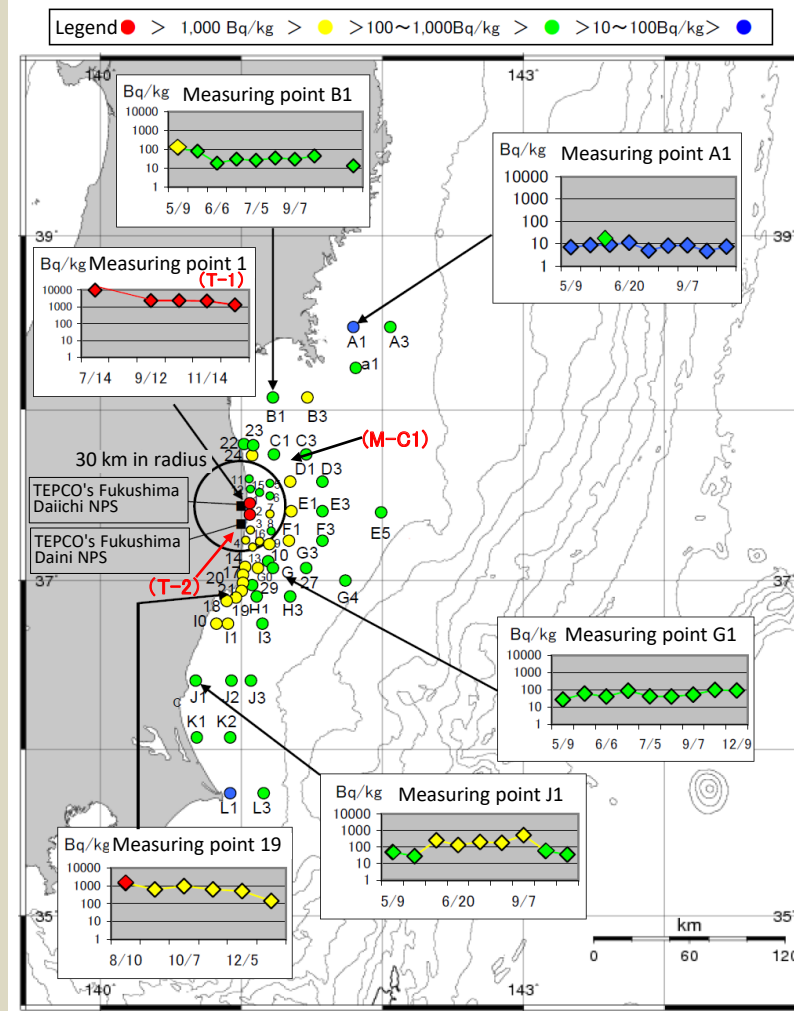
* Initially, radiation monitoring was the major purpose and the detection lower limit was set higher (Cs-137: 9 Bq/L). Accordingly, the readings were often ND. Measuring points where the readings were ND are not plotted in the figure.

Bq/L: becquerels per liter

Bq/kg: becquerels per kilogram

Sea-bottom soil

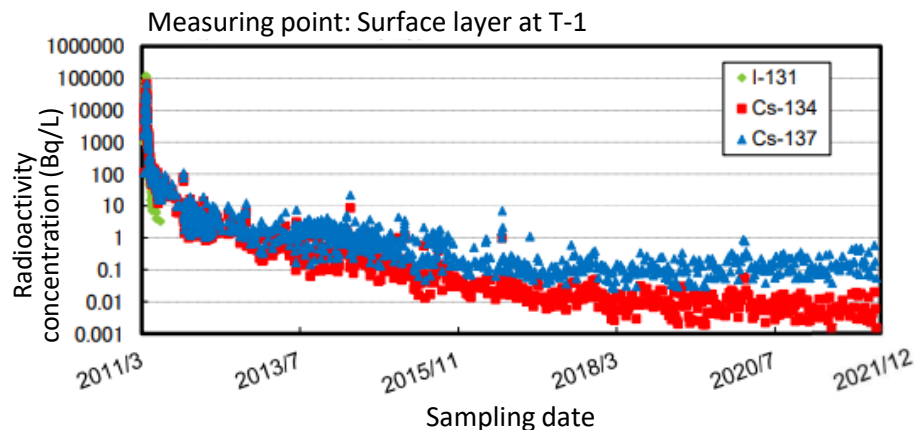
Readings of Radiation Monitoring of Sea Area (December 5, 2011 - January 13, 2012) (Cs-137 in Sea-bottom Soil)
Readings of Sea Area Monitoring (Dec 5-Jan13, 2011) Cs-137



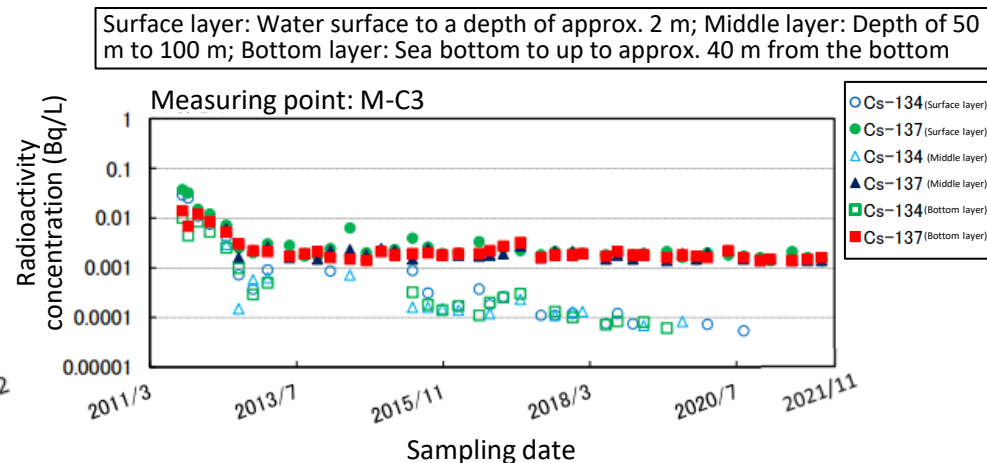
* Measuring point codes starting with alphabet: Bq/kg (dry); Measuring point codes without alphabet: Bq/kg (wet)

Changes in Radioactivity Concentrations in Seawater

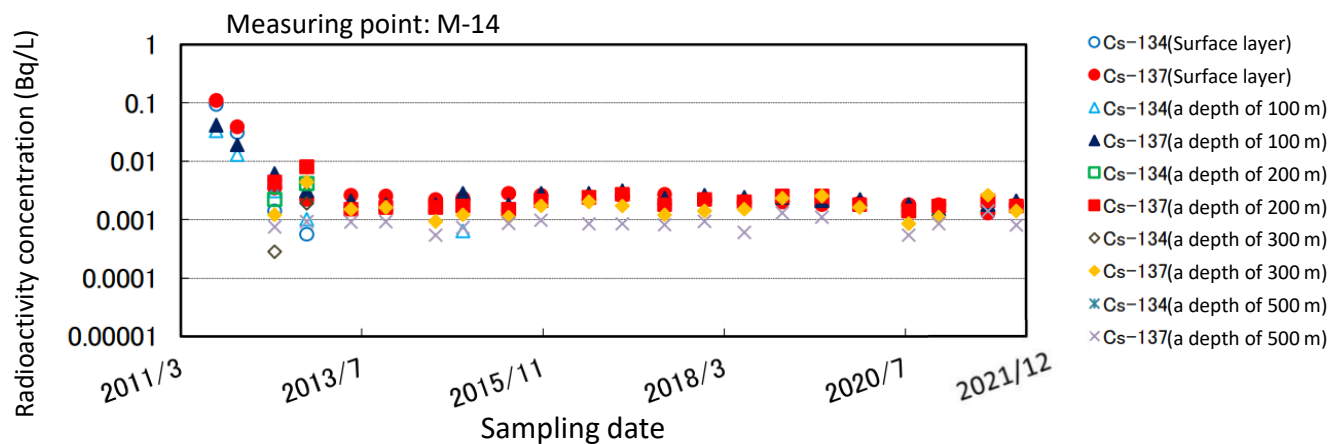
Changes in Radioactivity Concentrations in Seawater in Coastal Areas in Fukushima Prefecture



Changes in Radioactivity Concentrations in Seawater Offshore of Fukushima Prefecture



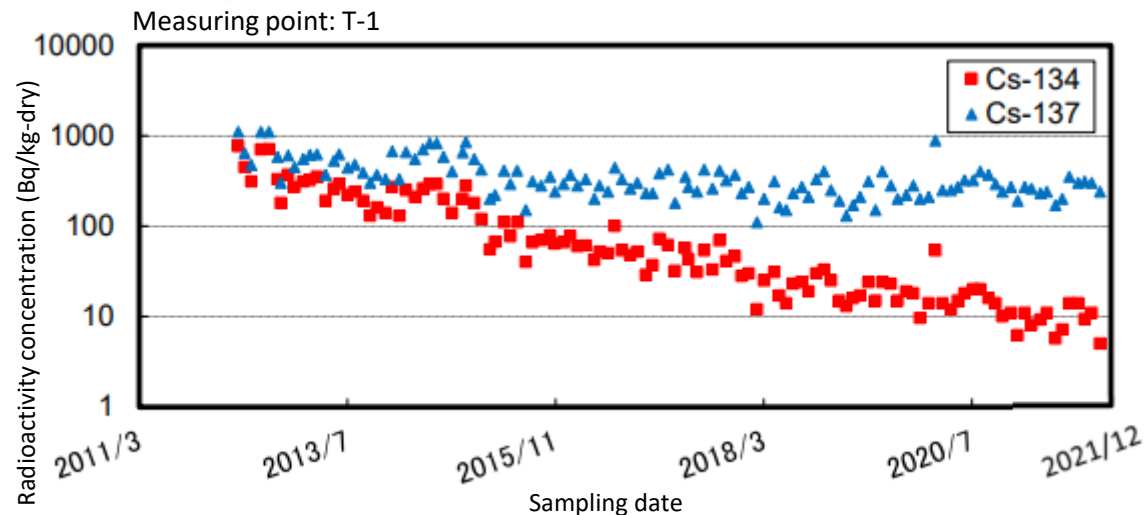
Changes in Radioactivity Concentrations in Seawater in the Open Sea



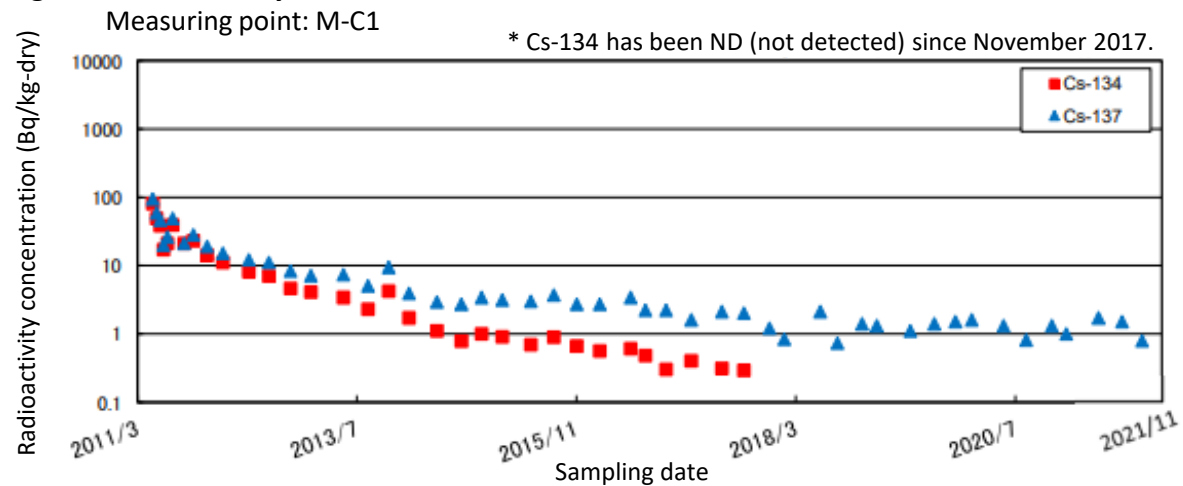
* For measuring points, see p. 47 of Vol. 2, "Radioactivity Concentrations in Seawater and Sea-bottom Soil (FY2011)."

Changes in Radioactivity Concentrations in Sea-bottom Soil

Changes in Radioactivity Concentrations in Sea-bottom Soil in Coastal Areas in and around Fukushima Prefecture



Changes in Radioactivity Concentrations in Sea-bottom Soil Offshore of Fukushima Prefecture



* For measuring points, see p.47 of Vol. 2, "Radioactivity Concentrations in Seawater and Sea-bottom Soil (FY2011)."

Results of the Sea Area Monitoring by the Nuclear Regulation Authority: <https://radioactivity.nsr.go.jp/ja/list/428/list-1.html> (in Japanese)