

Airport Help Desk Plan

6 Oct 2013

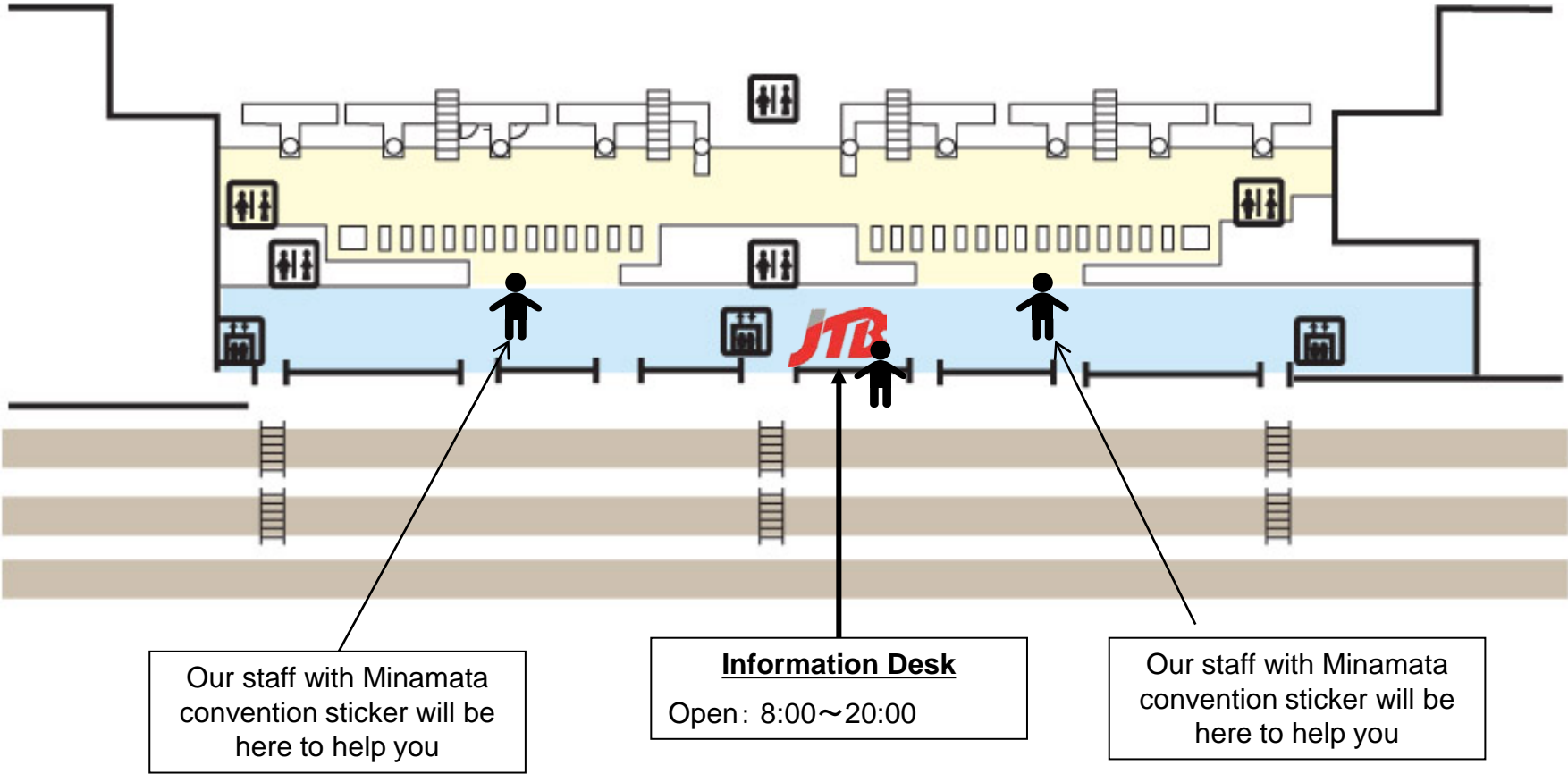


Worldwide Partnership
Global **M**arketing & **T**ravel

Narita Airport, Terminal1 & 2 Help Desk Map

Terminal 2
(1F Arr. Floor)

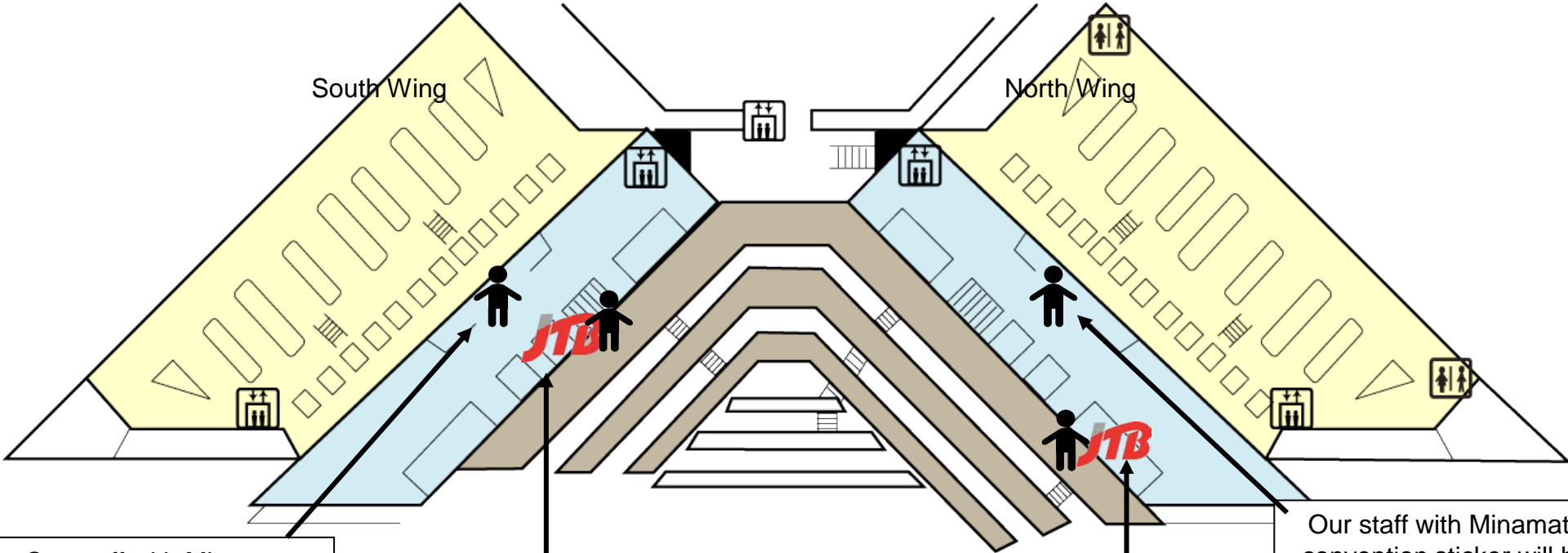
- 1) Information for flight connection
- 2) Help for lost baggage and other troubles
- 3) Information for convention schedule
- 4) Information for hotels and access in case of flight cancel and delay because of the weather



Narita Airport, Terminal1 & 2 Information Desk Map

Terminal 1
(1F Arr. Floor)

- 1) Information for flight connection
- 2) Help for lost baggage and other troubles
- 3) Information for convention schedule
- 4) Information for hotels and access in case of flight cancel and delay because of the weather



Our staff with Minamata convention sticker will be here to help you

Information Desk
Open: 8:00~20:00

Information Desk
Open: 8:00~20:00

Our staff with Minamata convention sticker will be here to help you

Narita Airport Information Desk



Narita Airport Terminal 1 South Wing



Narita Airport Terminal 1 North Wing



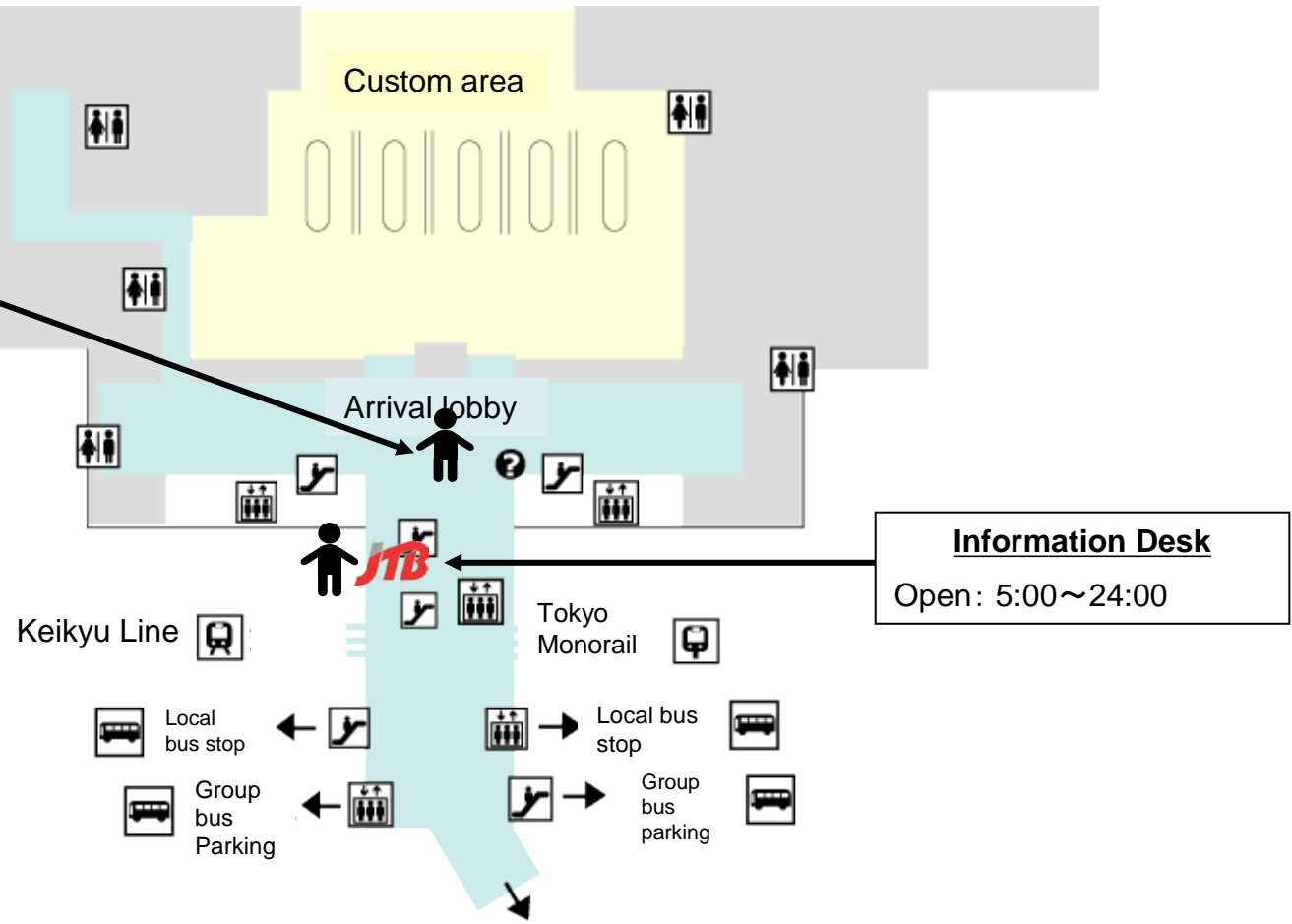
Narita Airport Terminal 2

Haneda Airport, International Terminal Information Desk Map

Haneda Int'l Terminal Arr. Floor

- 1) Information for flight connection
- 2) Help for lost baggage and other troubles
- 3) Information for convention schedule
- 4) Information for hotels and access in case of flight cancel and delay because of the weather

Our staff with Minamata convention sticker will be here to help you



Haneda Airport Information Desk

