

Facilitating Private Sector Participation in REDD+ Activities

Tackling with driver of deforestation in partnership with private sector: Case study from Alto Mayo, Peru

Tuesday, 19 November
Japan Pavilion,
COP19 @Warsaw

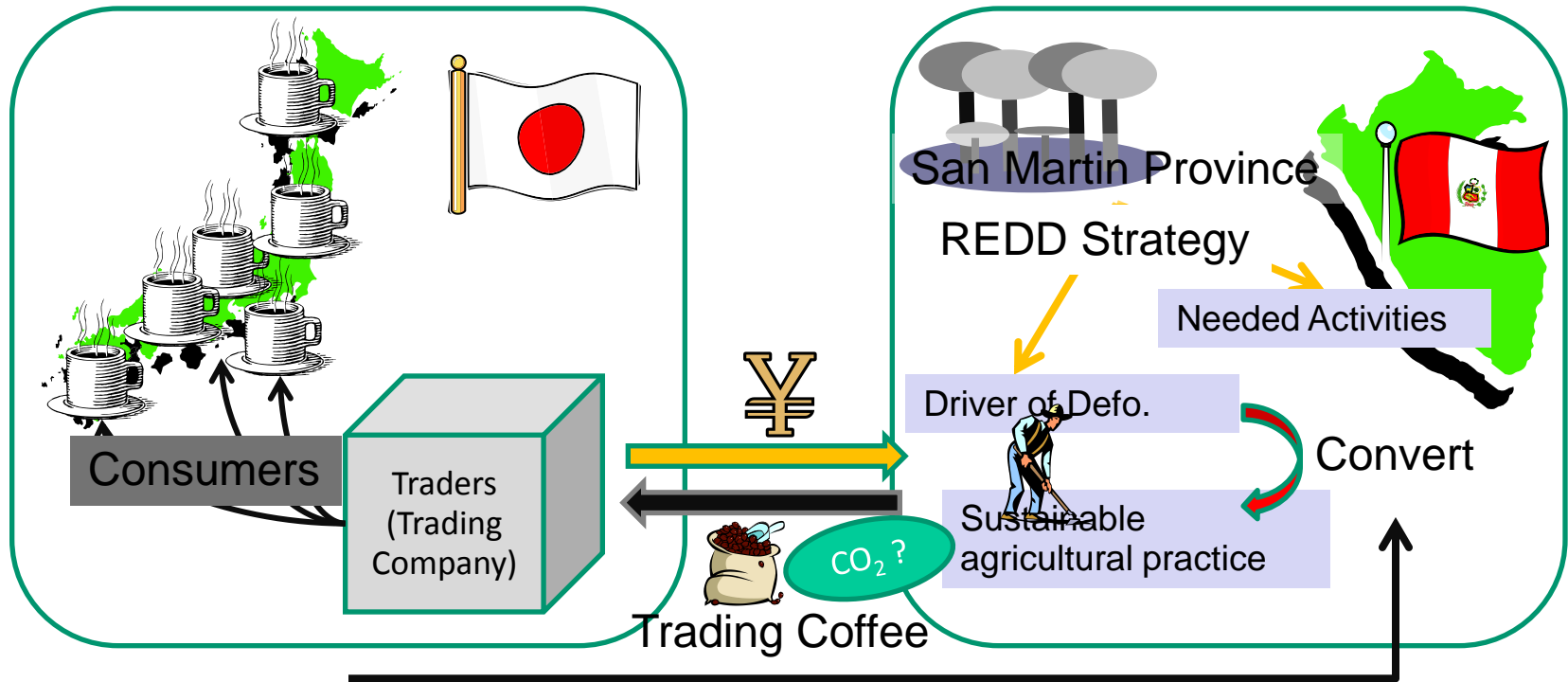
Kana Yamashita
Conservation International Japan

Tackling with driver of deforestation

- ❑ Promote sustainable economic activities and improve human well-being standards (local indicators)
 - ❑ Conservation Agreements with coffee farmers aiming for sustainable coffee production
 - ❑ Signed 670 Agreements to date
 - ❑ Provide alternative livelihood such as eco-tourism and aquaculture
- ❑ Strengthen the management of national park
- ❑ Scaling up the activity to San Martin Province
- ❑ Inform the national level

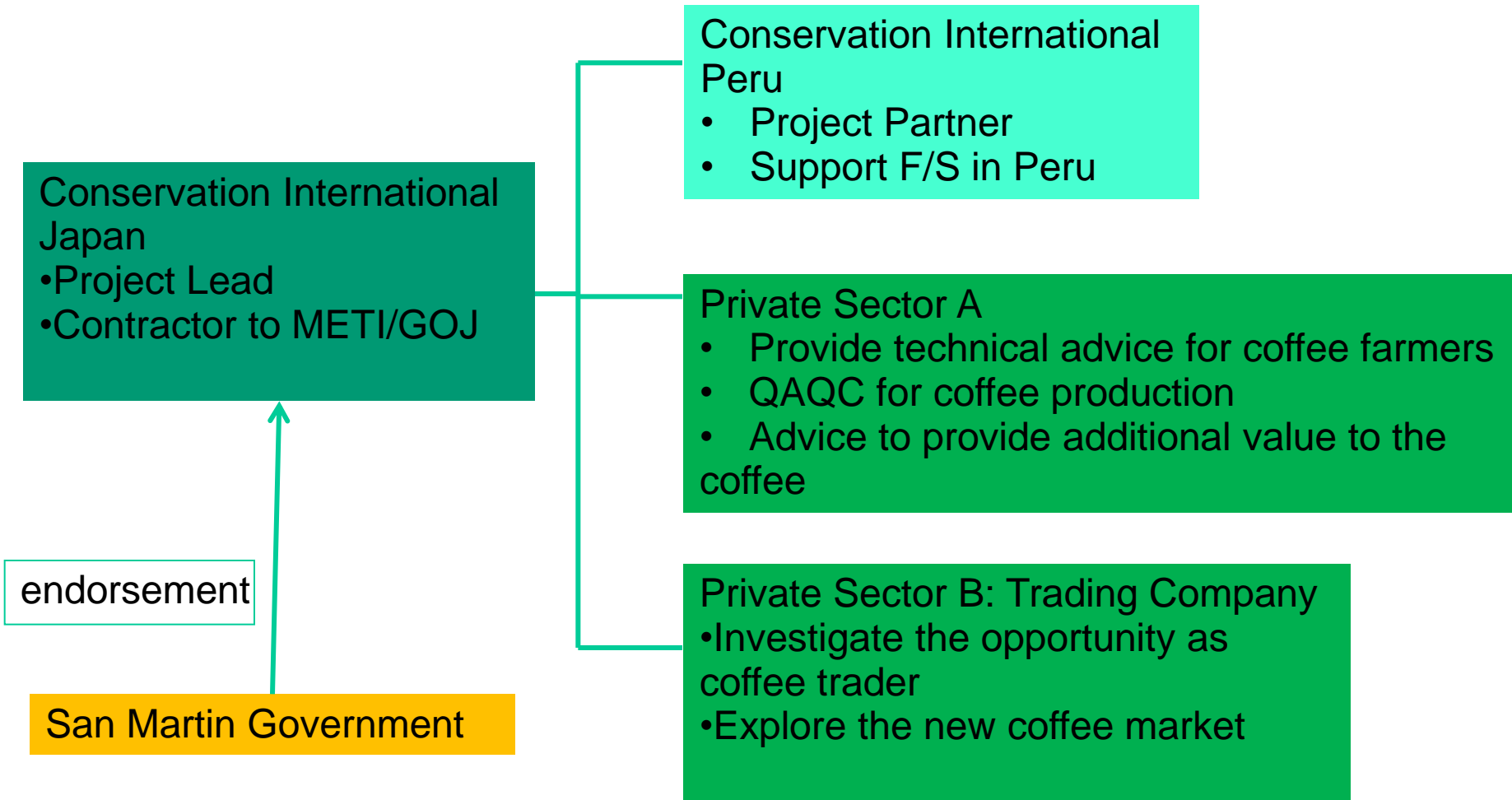


Connecting coffee and REDD+



Capacity building for coffee producing practice

Project team



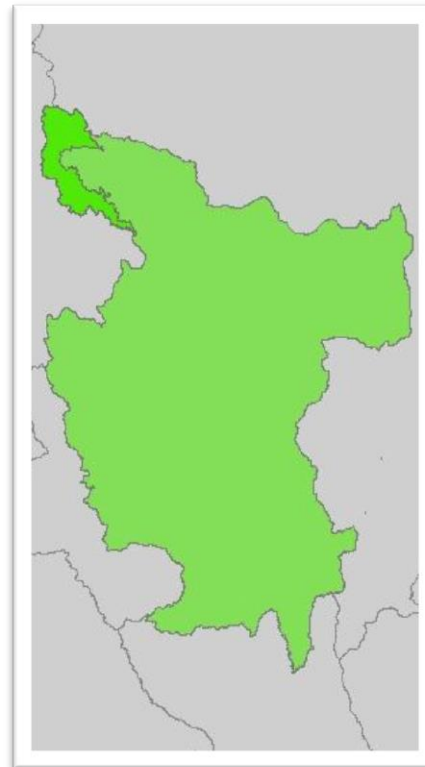
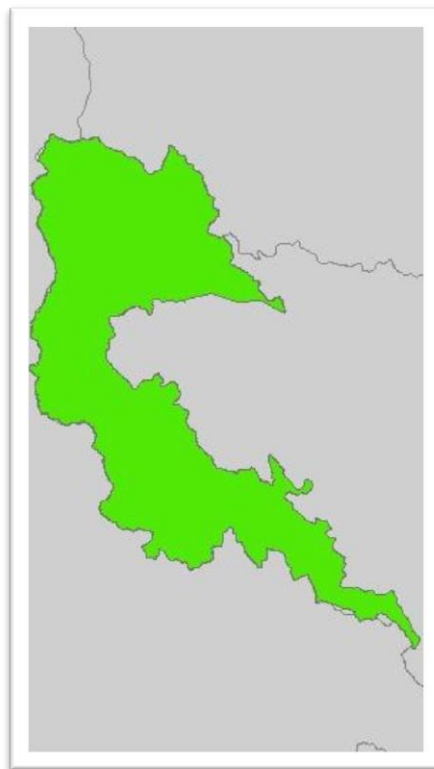
Bottom up approach

LOCAL:
Alto Mayo
Protected Forest

REGIONAL:
San Martin

NATIONAL:
Peru

Site and regional REDD+ initiatives are informing Peruvian national REDD+ policy development



Nested approach

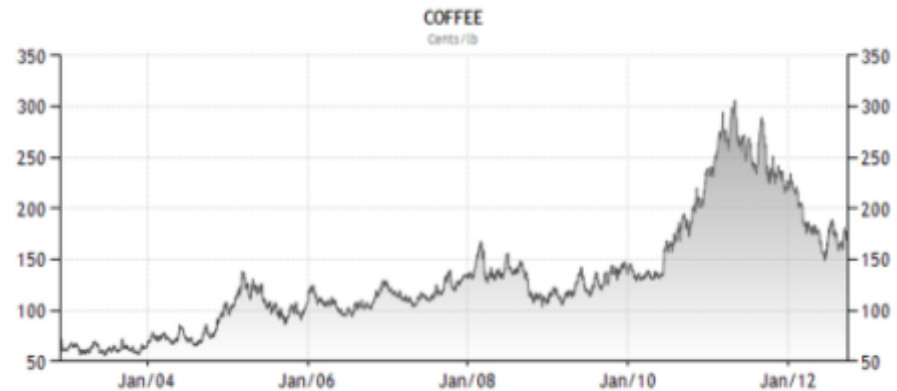
A topographic map of a region in the Andes, Peru, showing deforestation patterns from 1996 to 2006. The map features a network of roads, with Highway 5N highlighted in purple. Red and black dots and patches indicate areas of deforestation, with a high concentration along Highway 5N and in the northern part of the region. Labels for various districts and provinces are scattered across the map. A red-bordered box on the right contains text explaining the data and its impact.

Actual observed
deforestation, AMPF
(1996-2006)

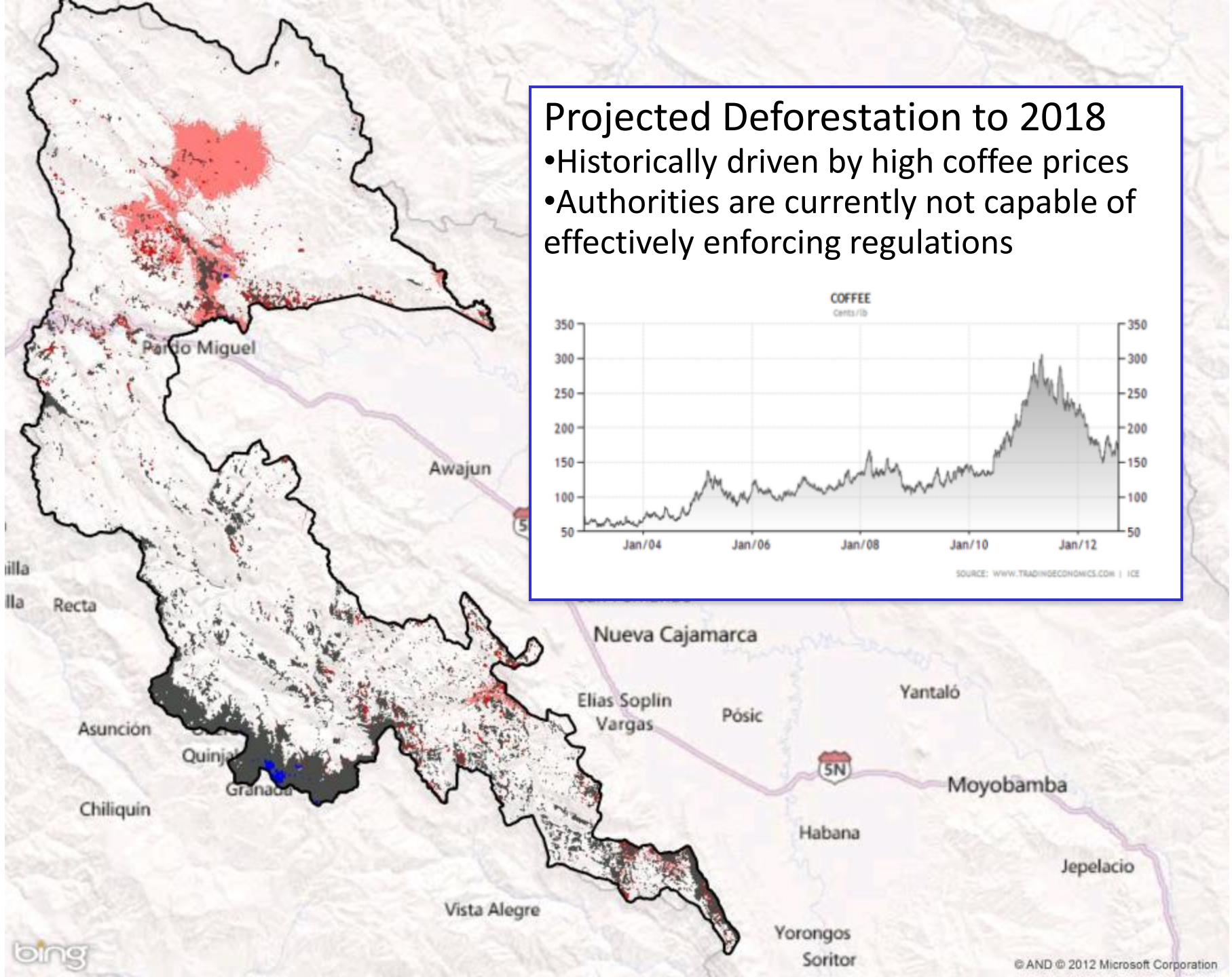
Highway 5N has been a major
contributing factor to migration

Projected Deforestation to 2018

- Historically driven by high coffee prices
- Authorities are currently not capable of effectively enforcing regulations

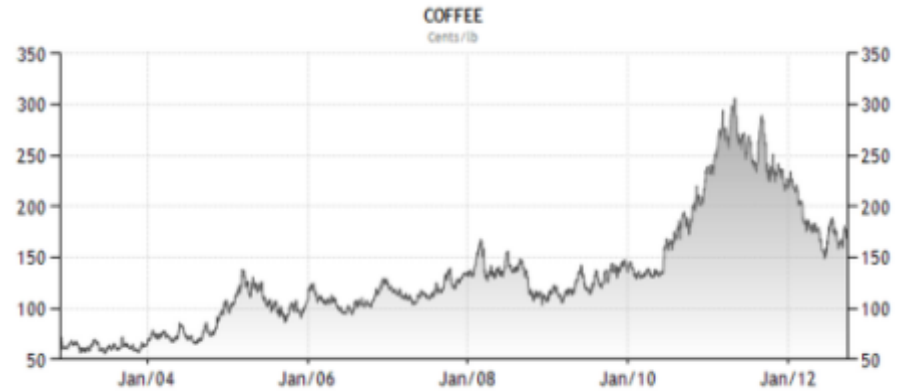


SOURCE: WWW.TRADINGECONOMICS.COM | ICE

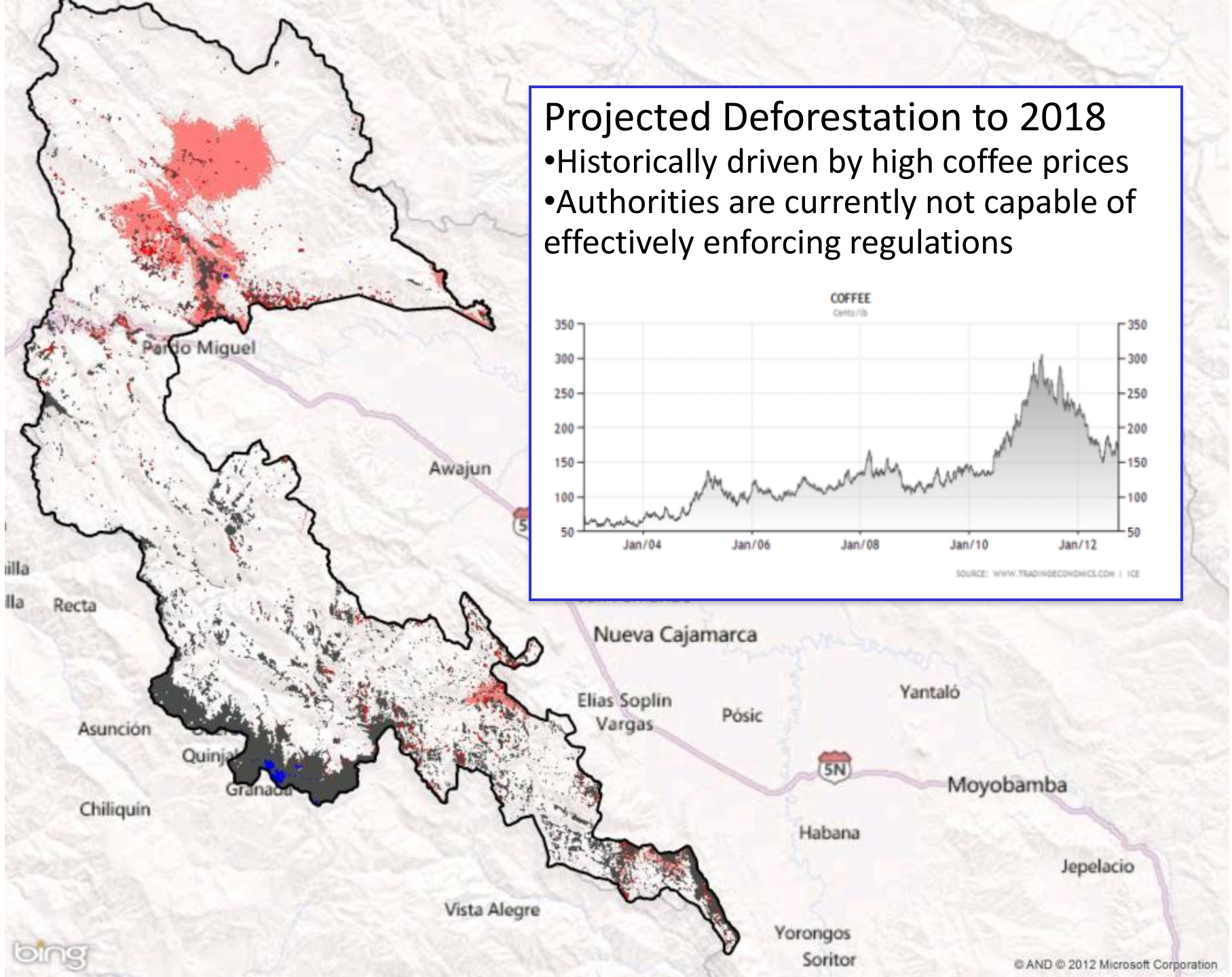


Projected Deforestation to 2018

- Historically driven by high coffee prices
- Authorities are currently not capable of effectively enforcing regulations

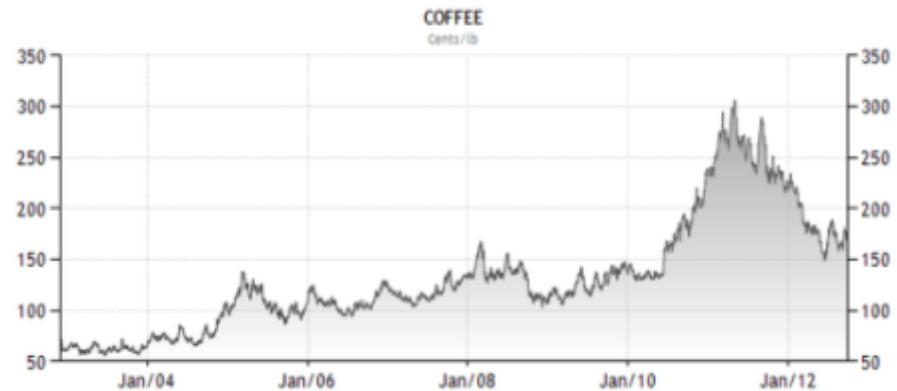


SOURCE: WWW.TRADINGECONOMICS.COM | ICE

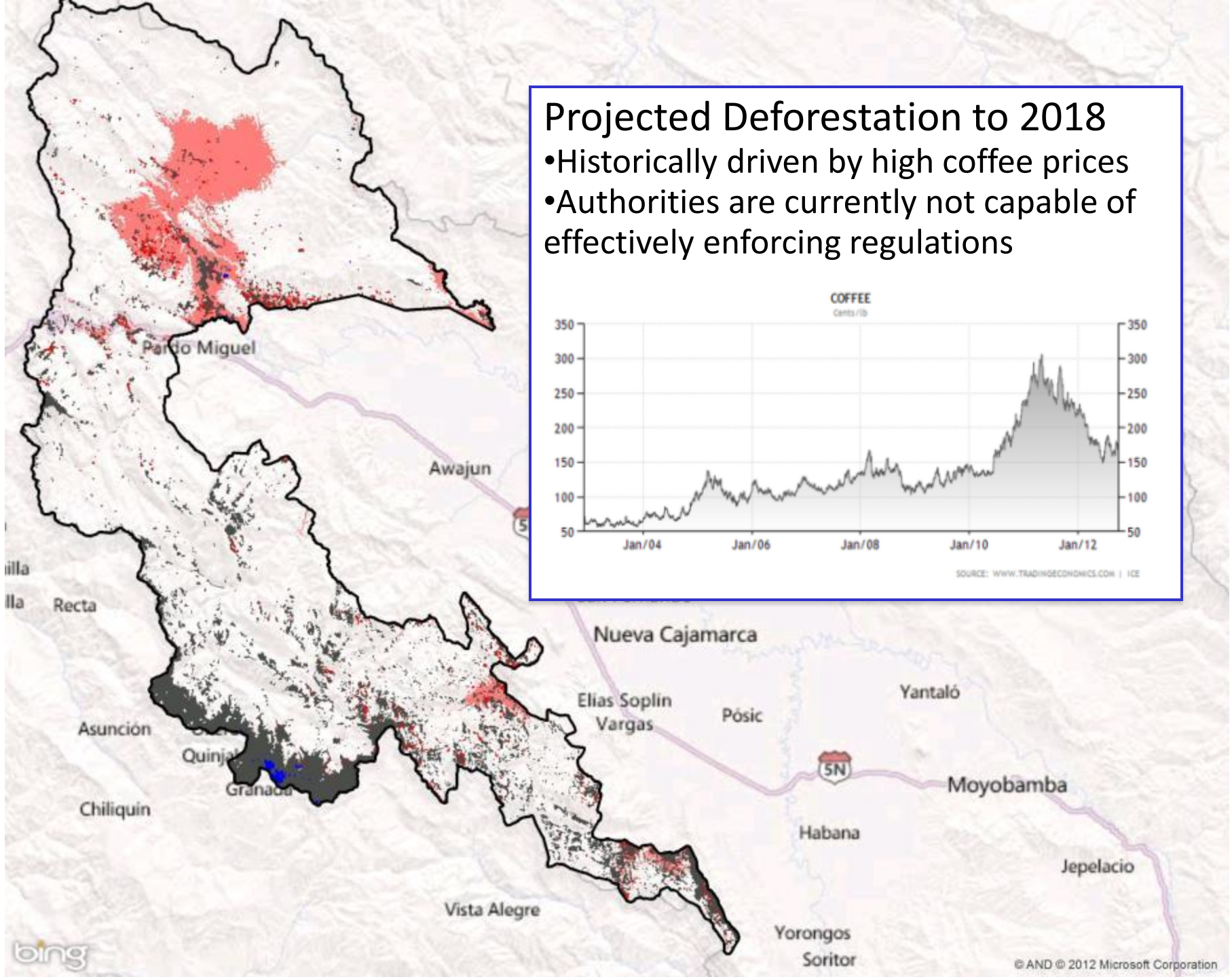


Projected Deforestation to 2018

- Historically driven by high coffee prices
- Authorities are currently not capable of effectively enforcing regulations

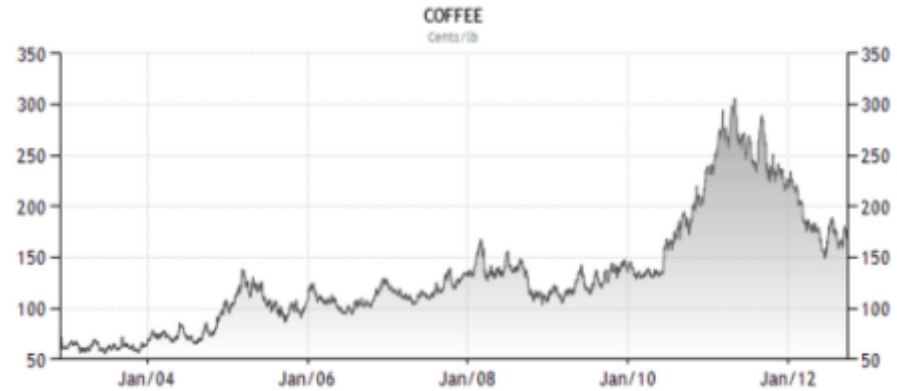


SOURCE: WWW.TRADINGECONOMICS.COM | ICE

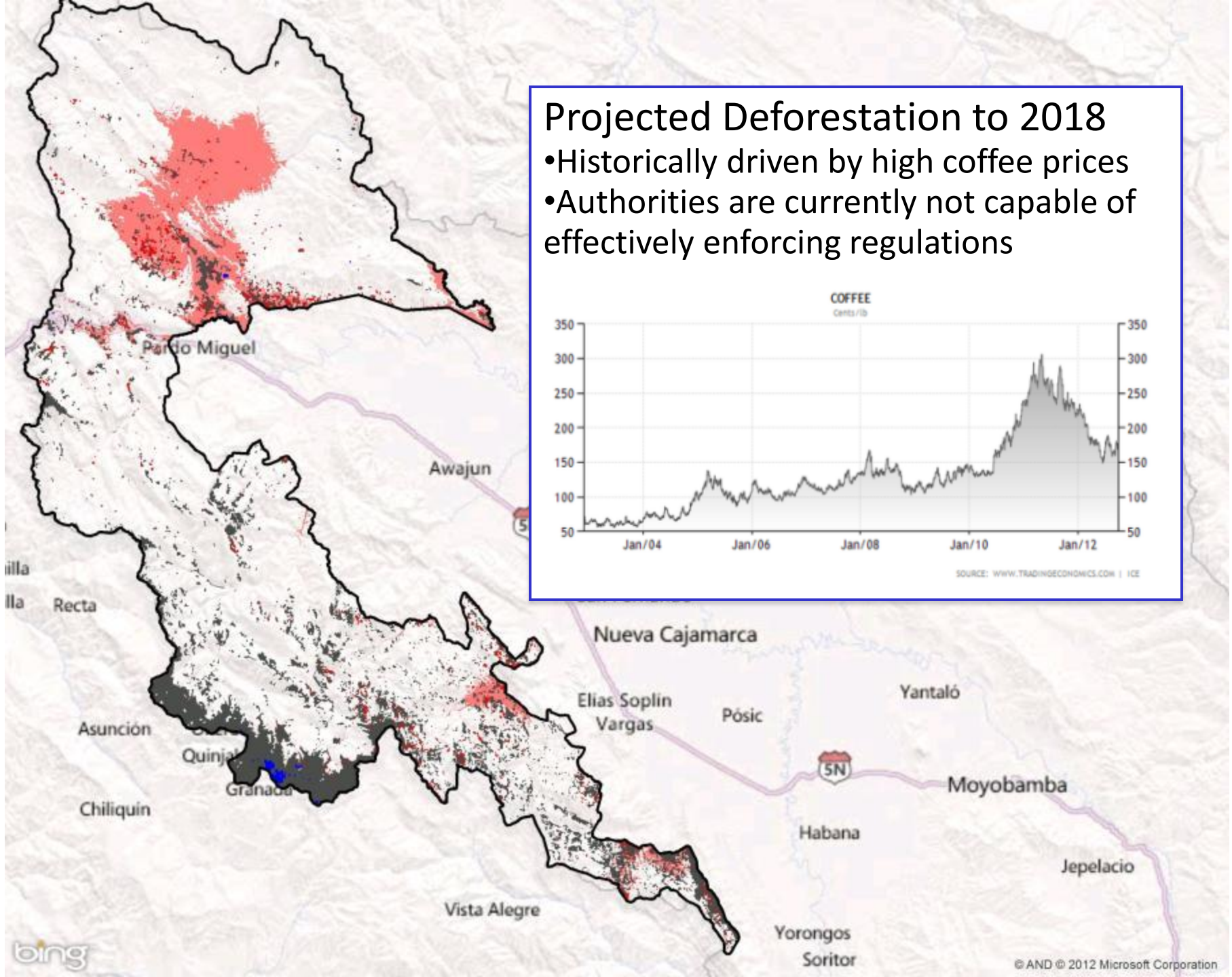


Projected Deforestation to 2018

- Historically driven by high coffee prices
- Authorities are currently not capable of effectively enforcing regulations

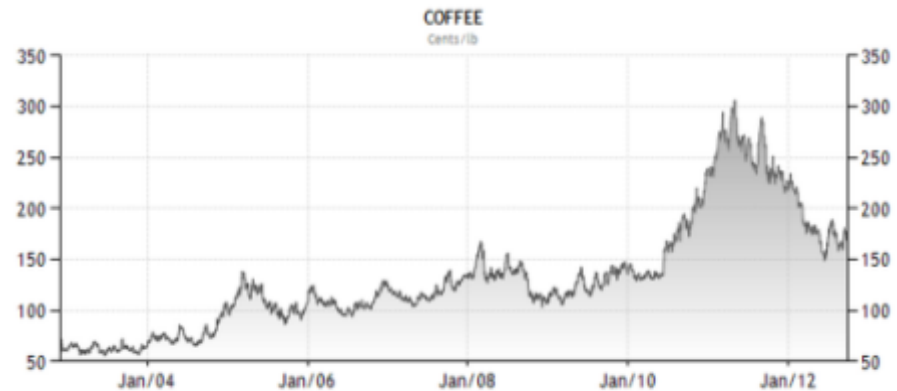


SOURCE: WWW.TRADINGECONOMICS.COM | ICE

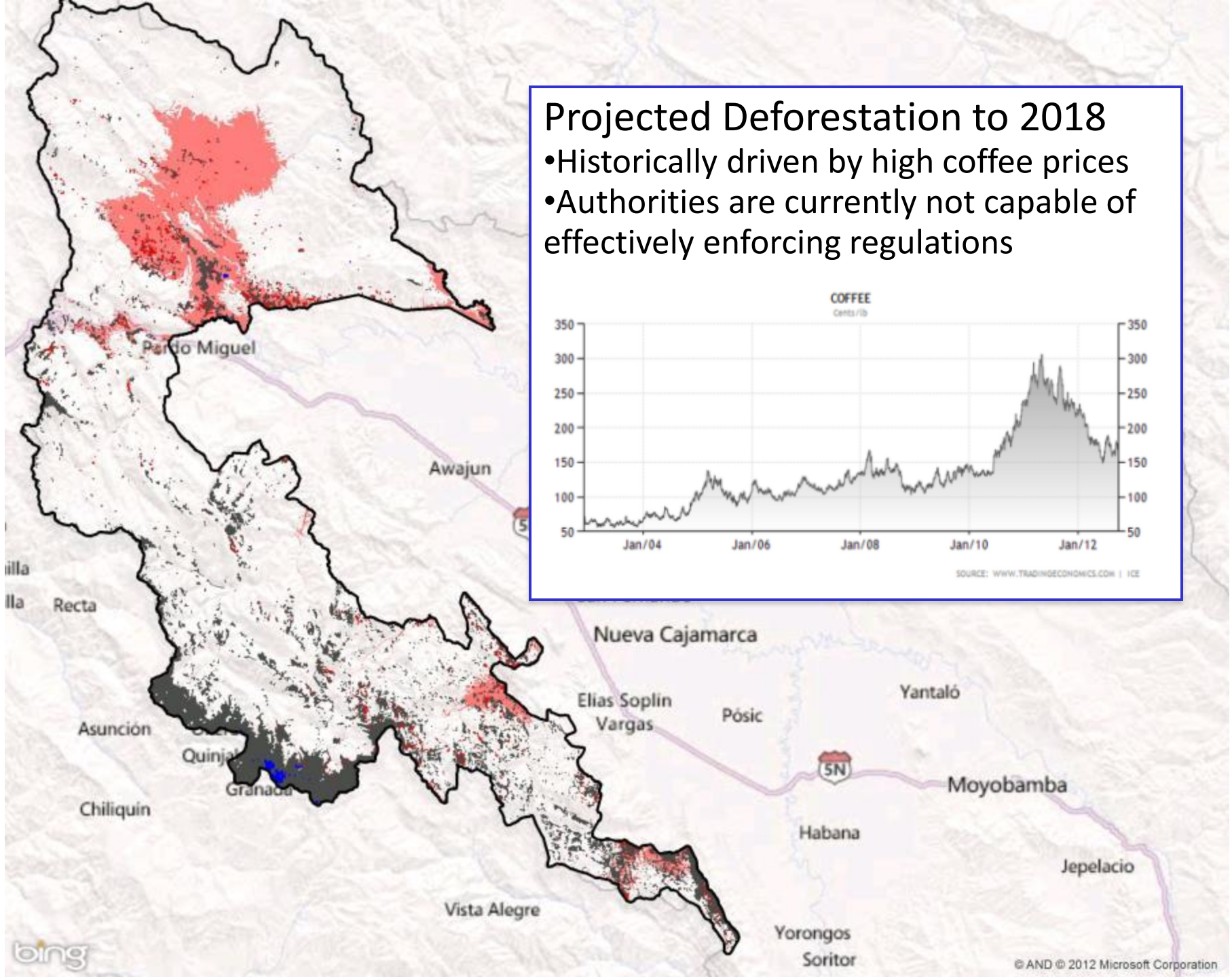


Projected Deforestation to 2018

- Historically driven by high coffee prices
- Authorities are currently not capable of effectively enforcing regulations

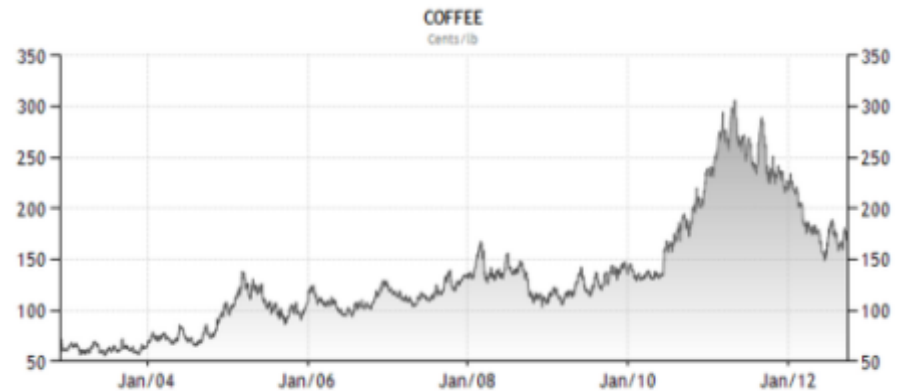


SOURCE: WWW.TRADINGECONOMICS.COM | ICE

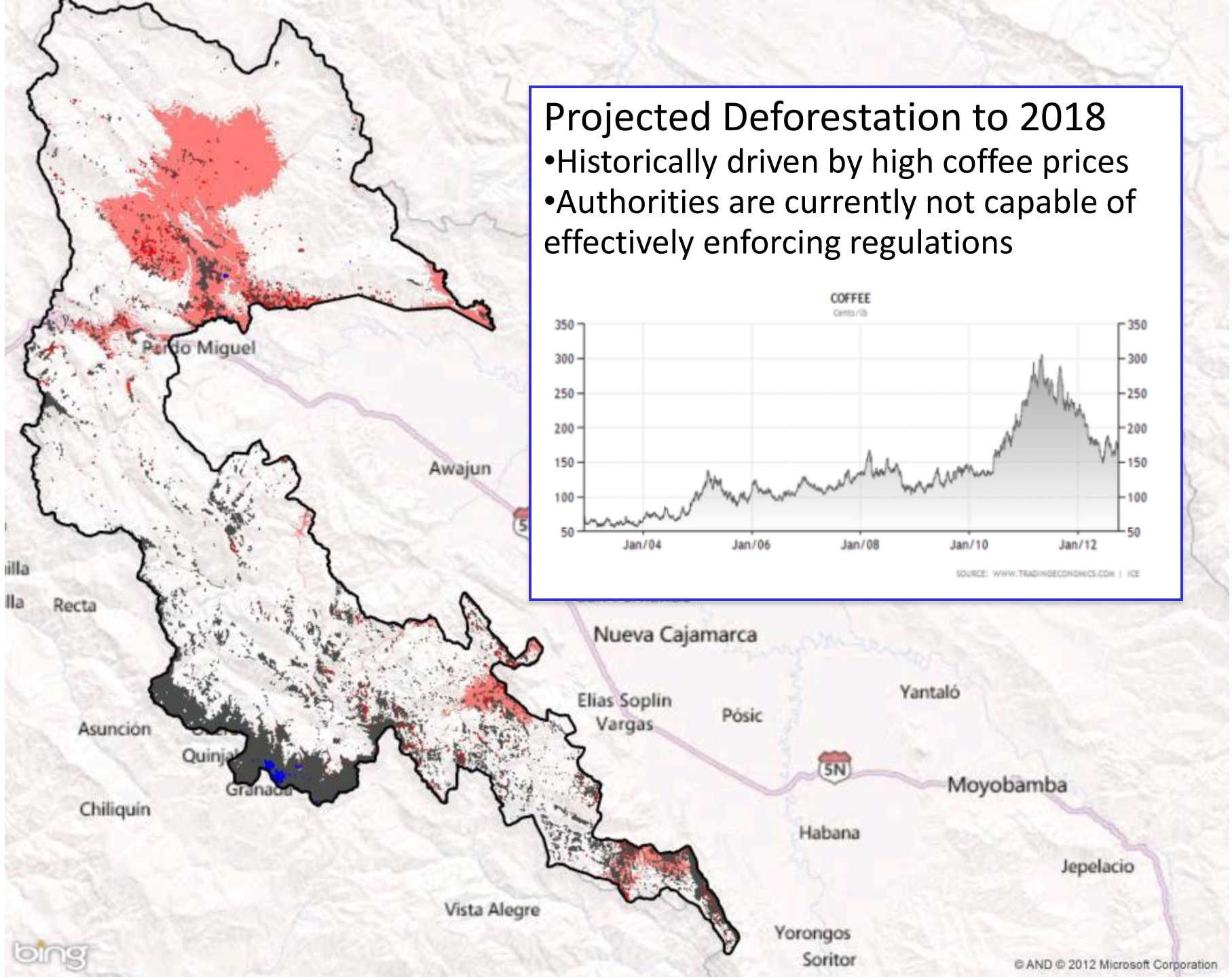


Projected Deforestation to 2018

- Historically driven by high coffee prices
- Authorities are currently not capable of effectively enforcing regulations

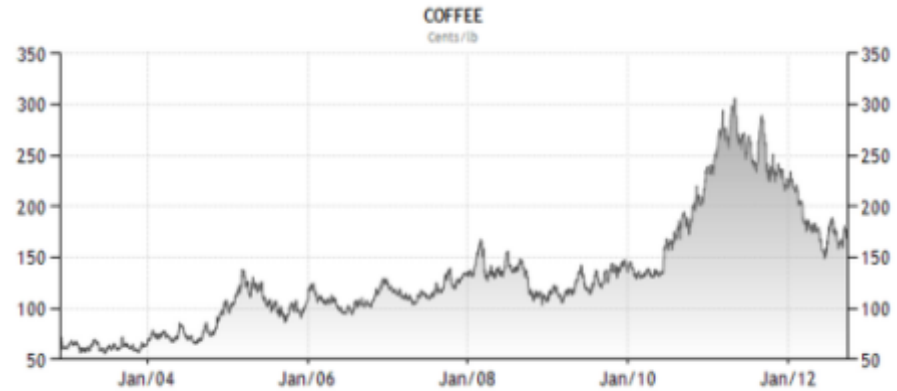


SOURCE: WWW.TRADINGECONOMICS.COM | ICE

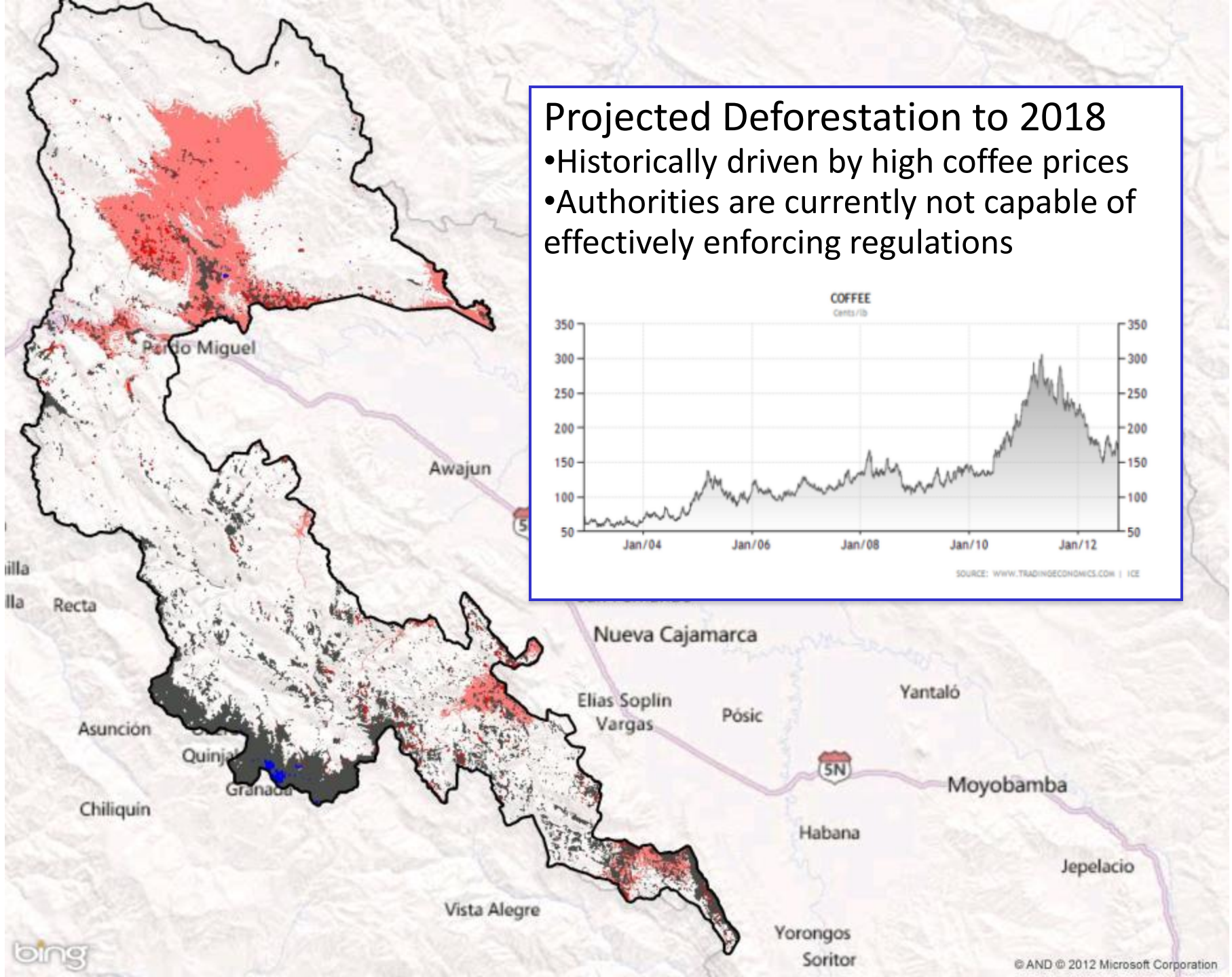


Projected Deforestation to 2018

- Historically driven by high coffee prices
- Authorities are currently not capable of effectively enforcing regulations

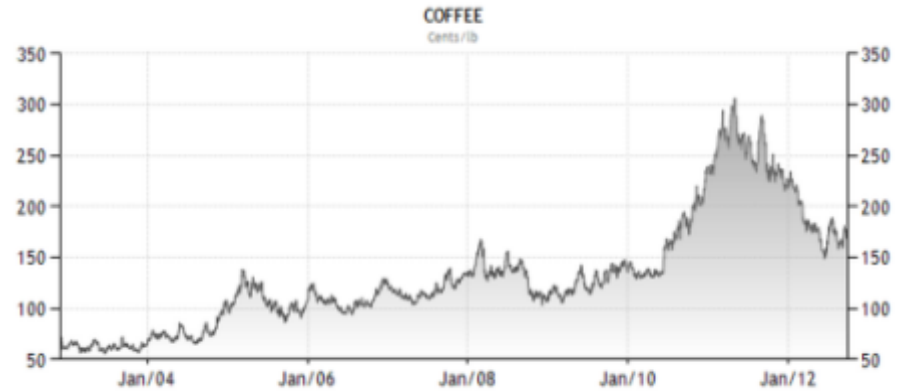


SOURCE: WWW.TRADINGECONOMICS.COM | ICE

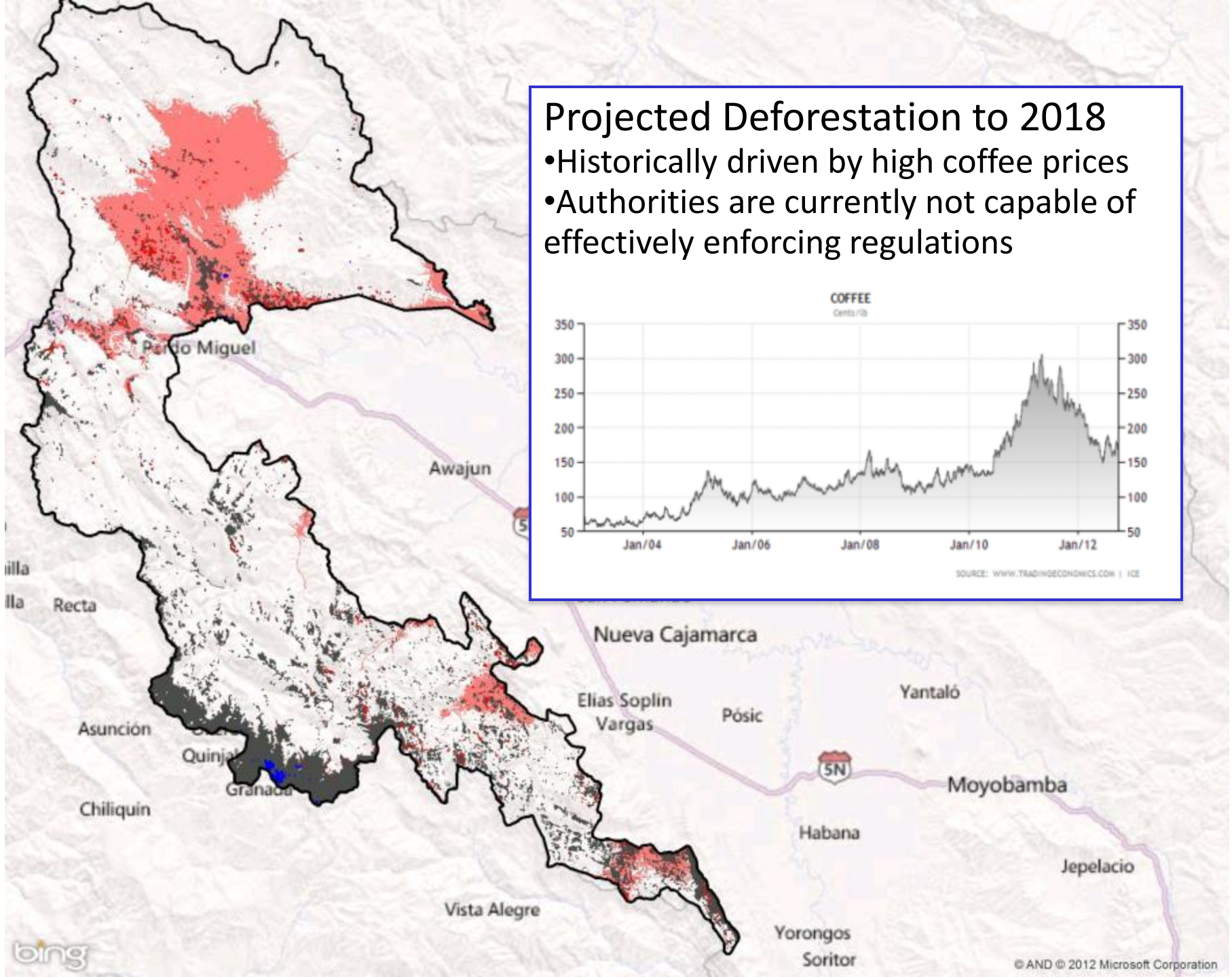


Projected Deforestation to 2018

- Historically driven by high coffee prices
- Authorities are currently not capable of effectively enforcing regulations

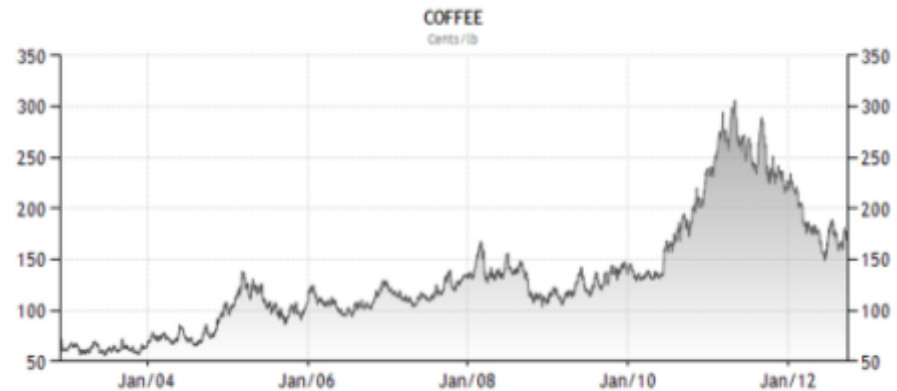


SOURCE: WWW.TRADINGECONOMICS.COM | ICE

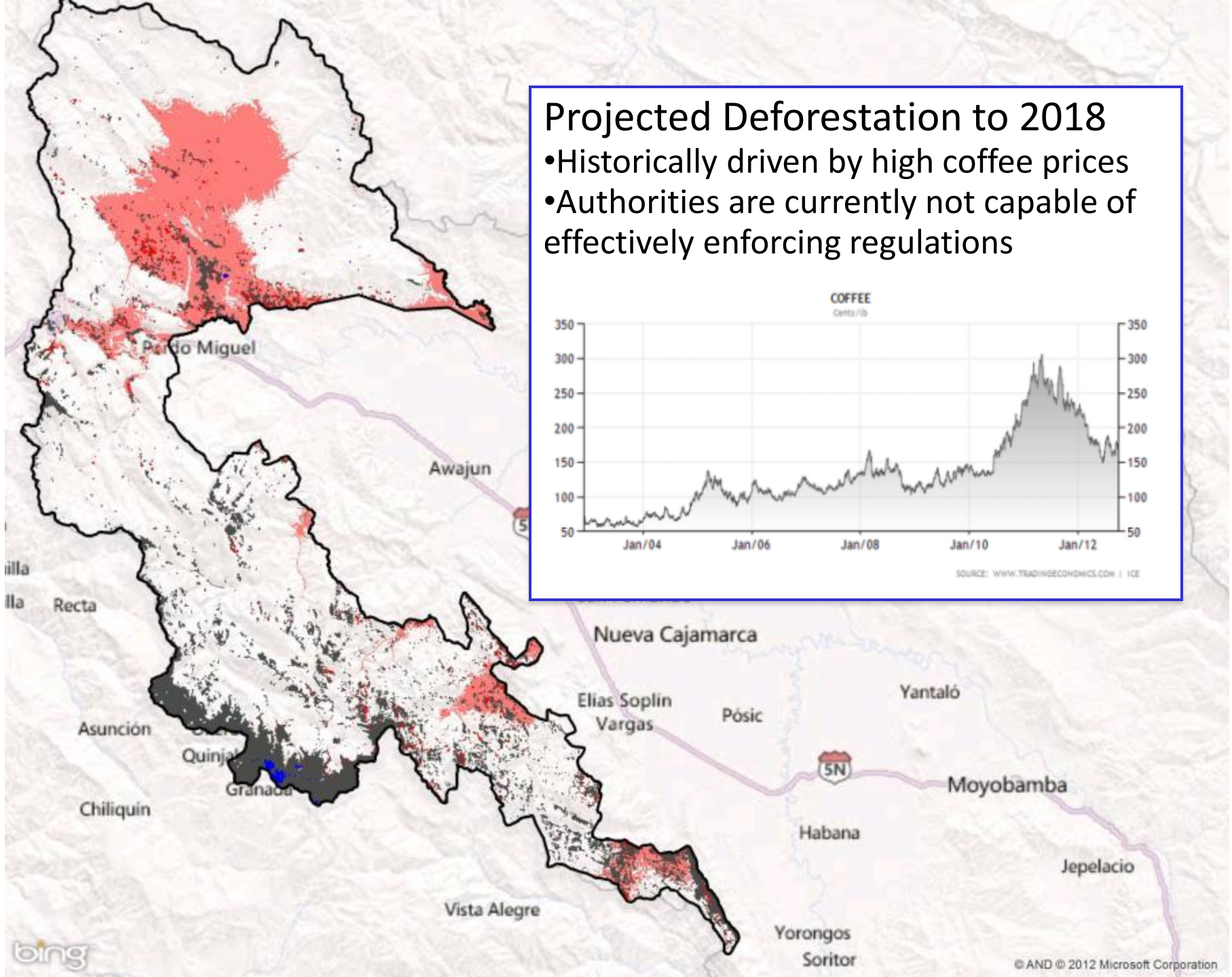


Projected Deforestation to 2018

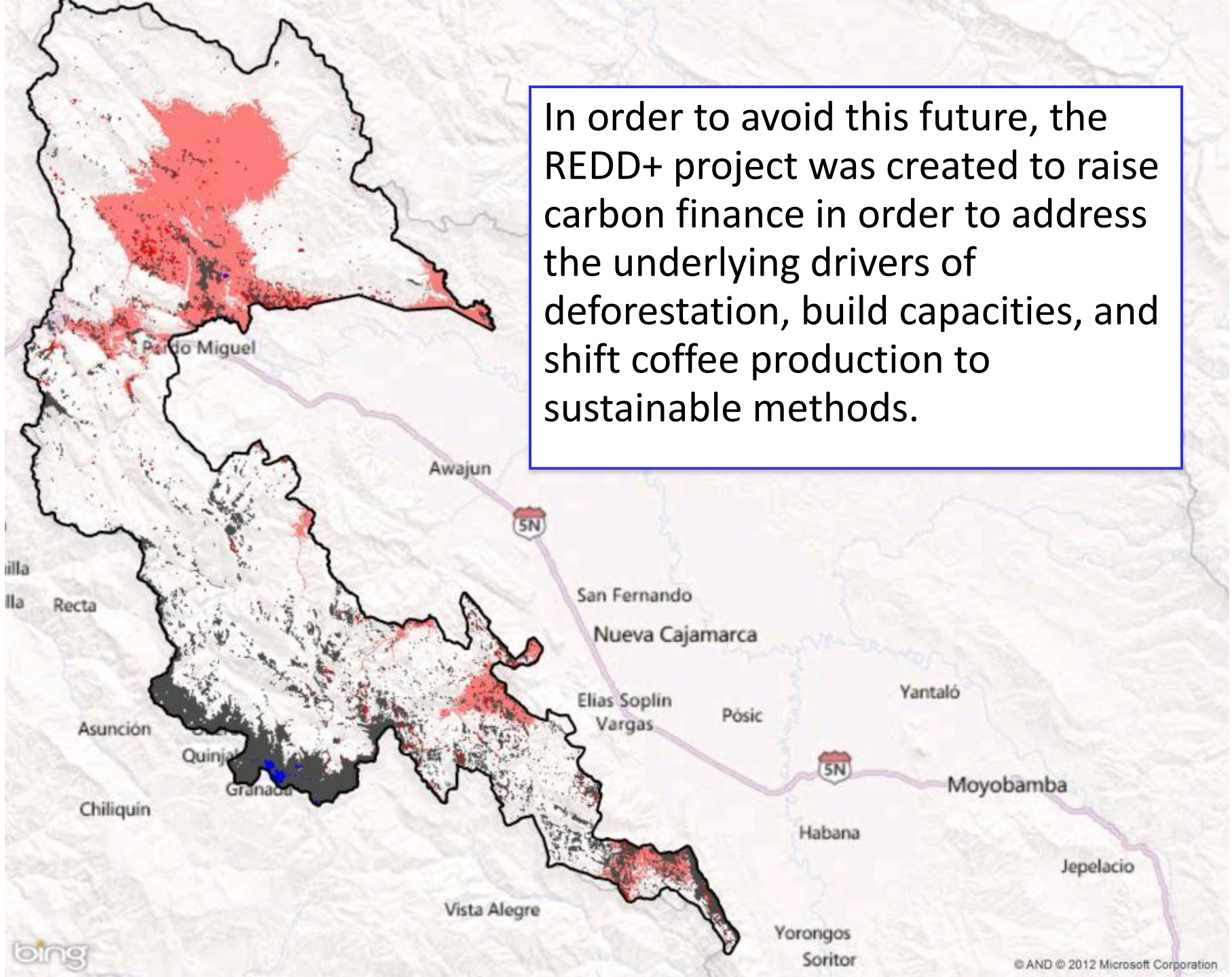
- Historically driven by high coffee prices
- Authorities are currently not capable of effectively enforcing regulations



SOURCE: WWW.TRADINGECONOMICS.COM | ICE



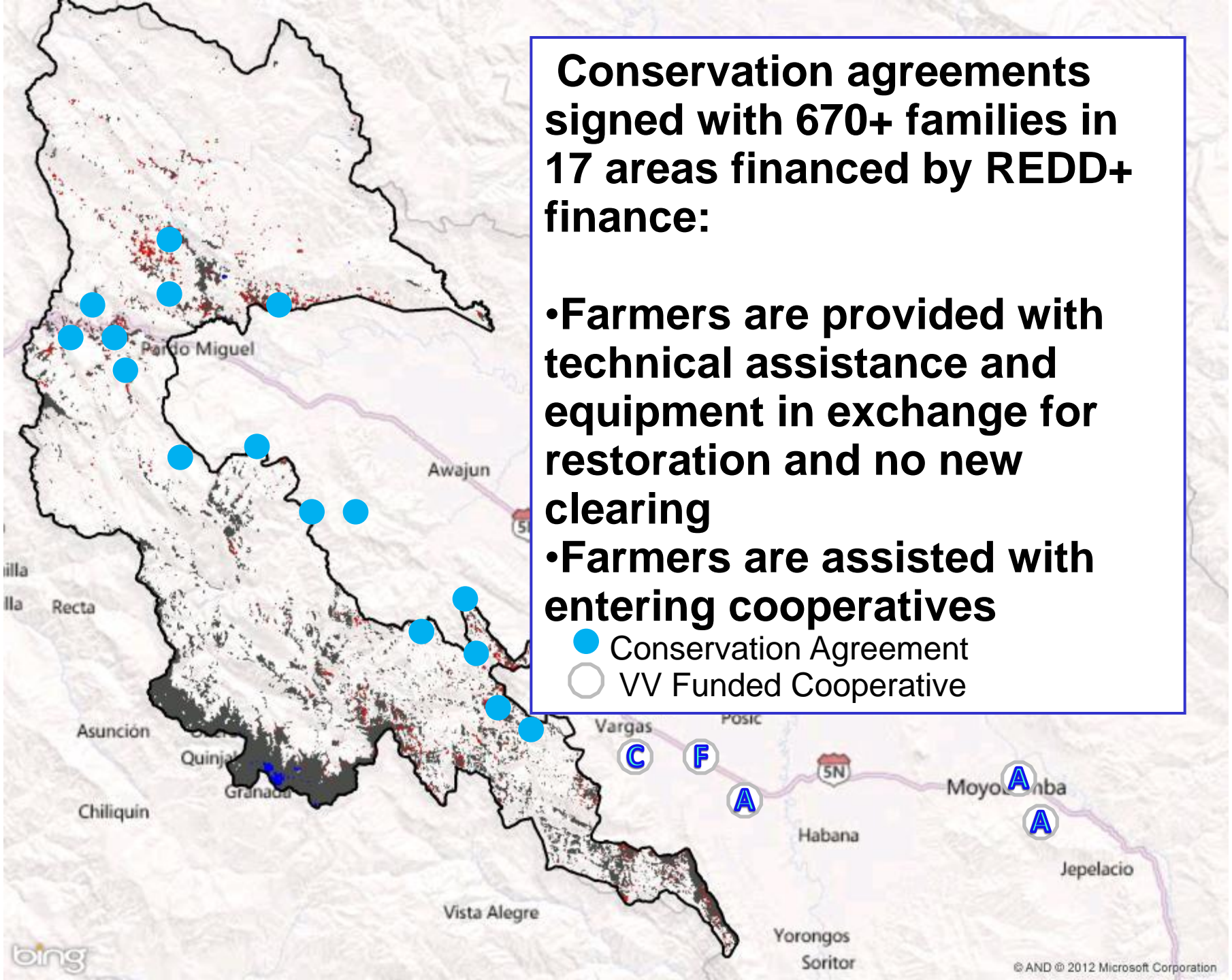
In order to avoid this future, the REDD+ project was created to raise carbon finance in order to address the underlying drivers of deforestation, build capacities, and shift coffee production to sustainable methods.



Conservation agreements signed with 670+ families in 17 areas financed by REDD+ finance:

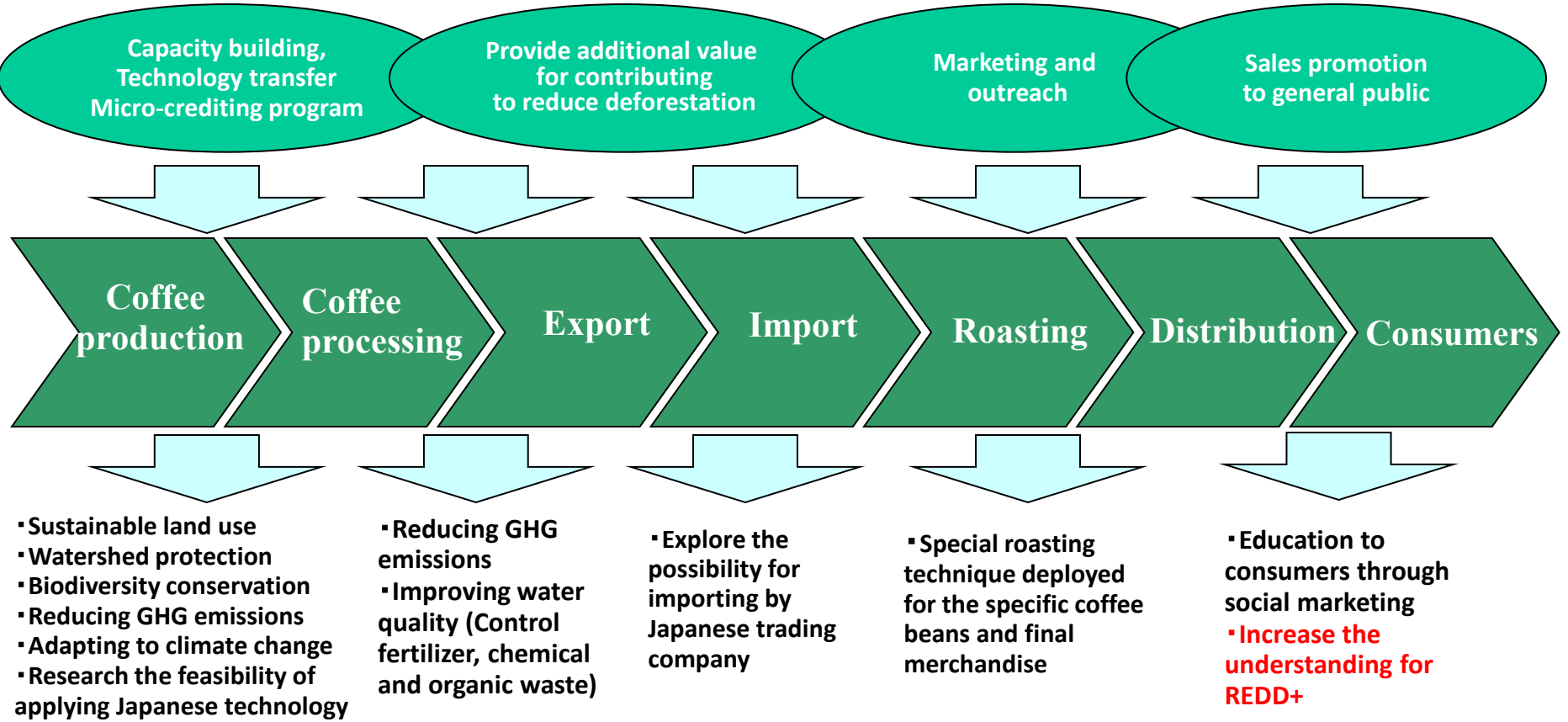
- Farmers are provided with technical assistance and equipment in exchange for restoration and no new clearing
- Farmers are assisted with entering cooperatives

- Conservation Agreement
- VV Funded Cooperative



Introduction technology outline

- CI Peru is supporting the production of environmentally friendly coffee by applying the scheme called 'Conservation Agreement' with coffee union and farmers.
- The most effective support for coffee producing region is to combine the capacity building, technology transfer and financial support such as micro-credit program.
- At this point, the coffee from the region is marketed without any additional value. Japan is ranked as one of the top countries for purchasing coffee. In order to provide additional value, provide the technology and marketing support by involving both Japanese coffee expert and trading company.



Findings

Opportunities

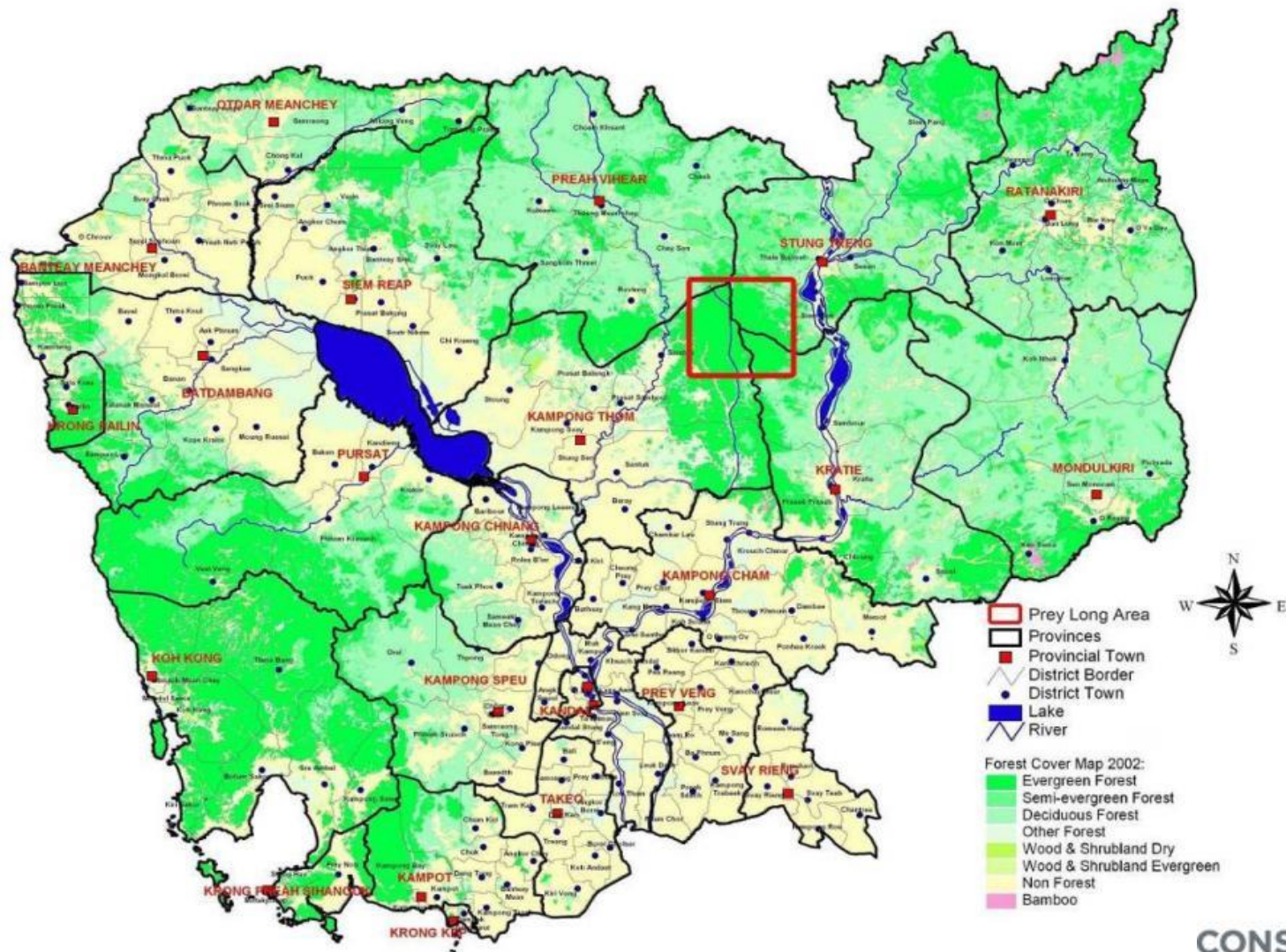
- For Alto May project, VCS/CCBS credits are already produced. The credits are owned by National Park Service (on average 500,000t CO₂/year)
- The sales of REDD+ credits to be used for the operation of park management
- 'Conservation Agreements' with coffee farmers are already positioned as the core activity to tackle with driver of defo. as REDD+ activity
- San Martin Province is the pilot site for 'REDD+ SES' at jurisdictional level
- BDS is considered at the sub-national level
- Some coffees are found to be exportable quality after the site visit
- Able to claim coffee that can 'protect forest'

Challenges

- Need to tackle with coffee rust disease
- Can't use normal chemical and fertilizer due to the agriculture in protected area
- Need to establish the union among Conservation Agreement farmers

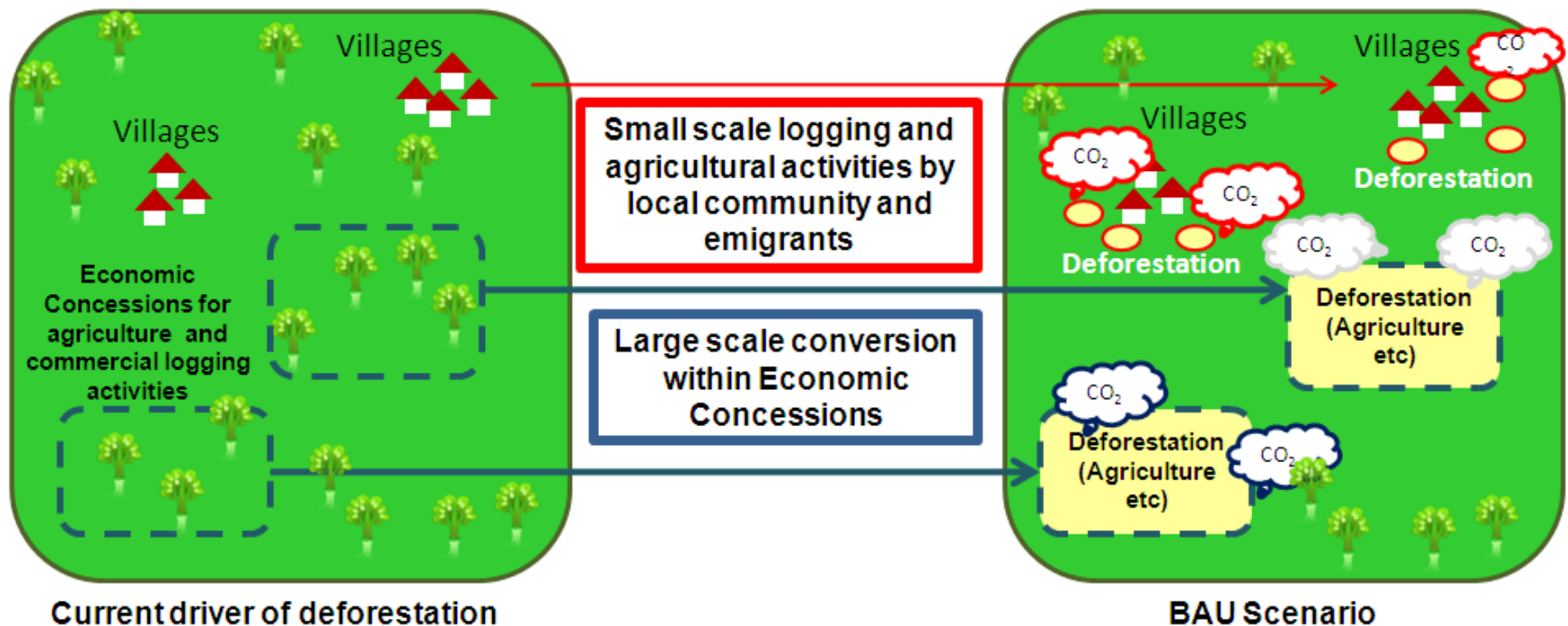


Other JCM REDD+ feasibility Study: Prey Long Area, Cambodia



The method for emission reductions

As a measure of reducing deforestation, consider application of Conservation Agreements, establishment of Protected Forest and strengthening governance. GHG mitigation activities also aims conservation of biodiversity and improvement of local livelihood.





Thank you very much!