

# Integrated Risk Governance in Adaptation Planning

*Brainstorming and introduction of recent cases in local  
adaptation efforts*

Makoto Kato

Principal Researcher

Overseas Environmental Cooperation  
Center, Japan (OECC)

# Risk-based Approach

## ■ Risk

An uncertain consequence of an event or an activity with respect to something that humans value. Such consequences can be positive or negative depending on the values that people associate with them

## ■ Risk Appraisal

The process of bringing together all knowledge elements necessary for risk characterization, evaluation and management. This includes not just the results of (scientific) risk assessment but also information about risk perceptions and economic and social implications of the risk consequence.

## ■ Risk Assessment

The task of identifying and exploring, preferably in quantified terms, the types, intensities and likelihood of the (normally undesired) consequences related to a risk. Risk assessment comprises hazard identification and estimation, exposure and vulnerability assessment and risk estimation

## ■ Risk Characterization

The process of determining the evidence based elements necessary for making judgments on the tolerability or acceptability of a risk.

## ■ Risk Evaluation

The process of determining the value-based components of making a judgment on risk. This includes risk-benefit balancing or incorporation of quality of life implications and may also involve looking at such issues as the potential for social mobilization or at pre-risk issues such as choice of technology and the social need of the particular operation giving rise to the risk.

(ICA-RUS 2013)

# Risk Governance

- Involves actors, rules, conventions, processes, and mechanisms concerned with how relevant risk information is collected, analyzed and communicated and management decisions are taken.
- Encompasses the combined risk-relevant decisions and actions of both governmental and private actors, risk governance is of particular importance in, but not restricted to, situations where there is no single authority to take a binding risk management decision but where instead the nature of the risk requires the collaboration and co-ordination between a range of different stakeholders.
- Risk governance however not only includes a multifaceted, multi-actor risk process but also calls for the consideration of contextual factors such as institutional arrangements (*e.g. the regulatory and legal framework that determines the relationship, roles and responsibilities of the actors and co-ordination mechanisms such as markets, incentives or self-imposed norms*)

(ICA-RUS 2013)

# Development of Risk Inventory

Major Areas of Risk	Sectoral Breakdown	Description of potential impact and loss
Human Life-related	✓ Energy	.....
	✓ safety	.....
	✓ Health	.....
	✓ economy and services	.....
	✓ food	.....
	✓ freshwater resources	.....
ecosystems and biodiversity	✓ Forest	.....
	✓ grassland	.....
	✓ Watershed areas	.....
.....	.....	.....



Allows a “global view of all risks, and provide Key reference for prioritization of response to the impact, including budgetary arrangement.

## Recent Experience with Local Government working on adaptation to climate change

### Bangkok Metropolitan Administration (BMA)

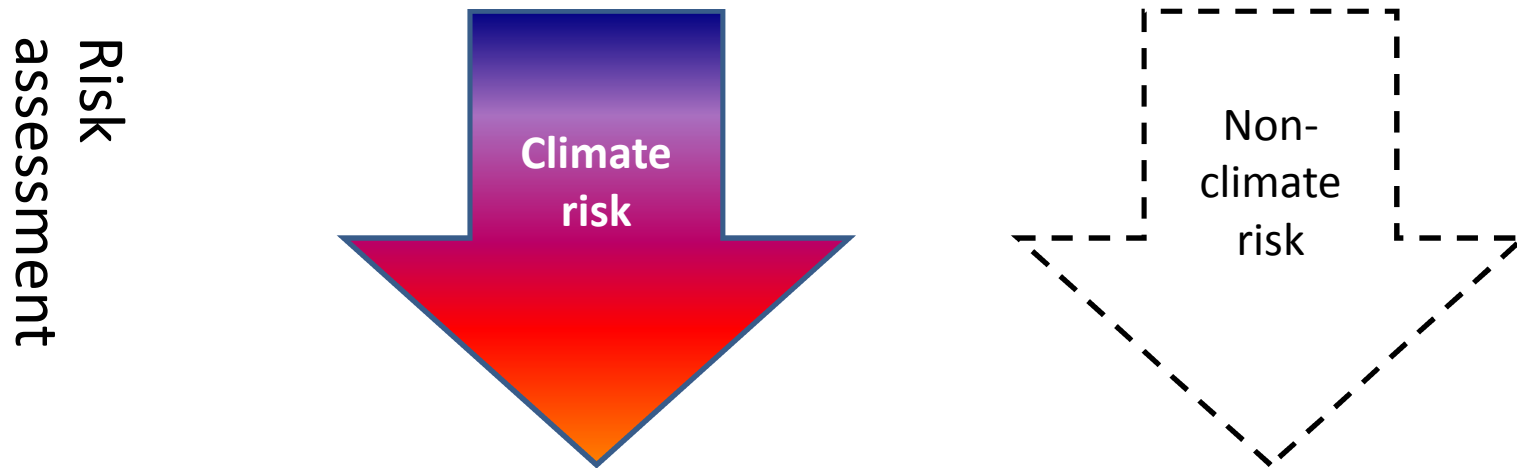
- ✓ Currently in process of drafting Bangkok Master Plan on Climate Change 2013-2023
- ✓ Adaptation is a new area in climate change action in Bangkok
- ✓ Adaptation Task Force is established
- ✓ Japan International Cooperation Agency (JICA) started supporting BMA for developing a Master Plan since March 2013 through March 2015

# Flooding in Thailand in 2011

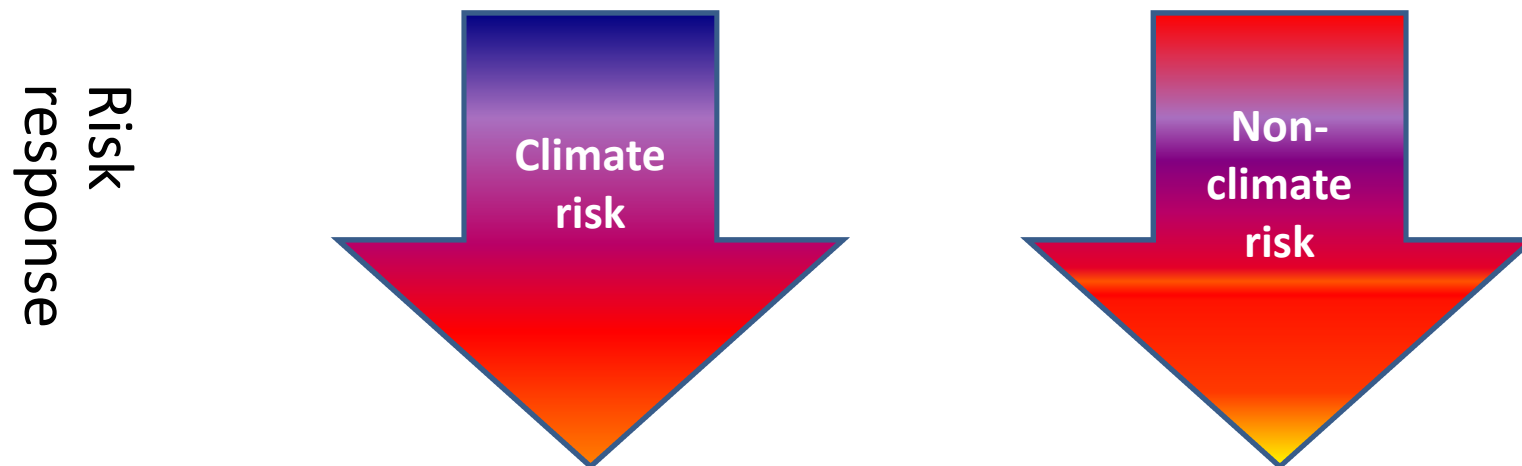


# Climate risk or non-climate risk?

To clarify “risk mechanisms”, these two should not be mixed up..

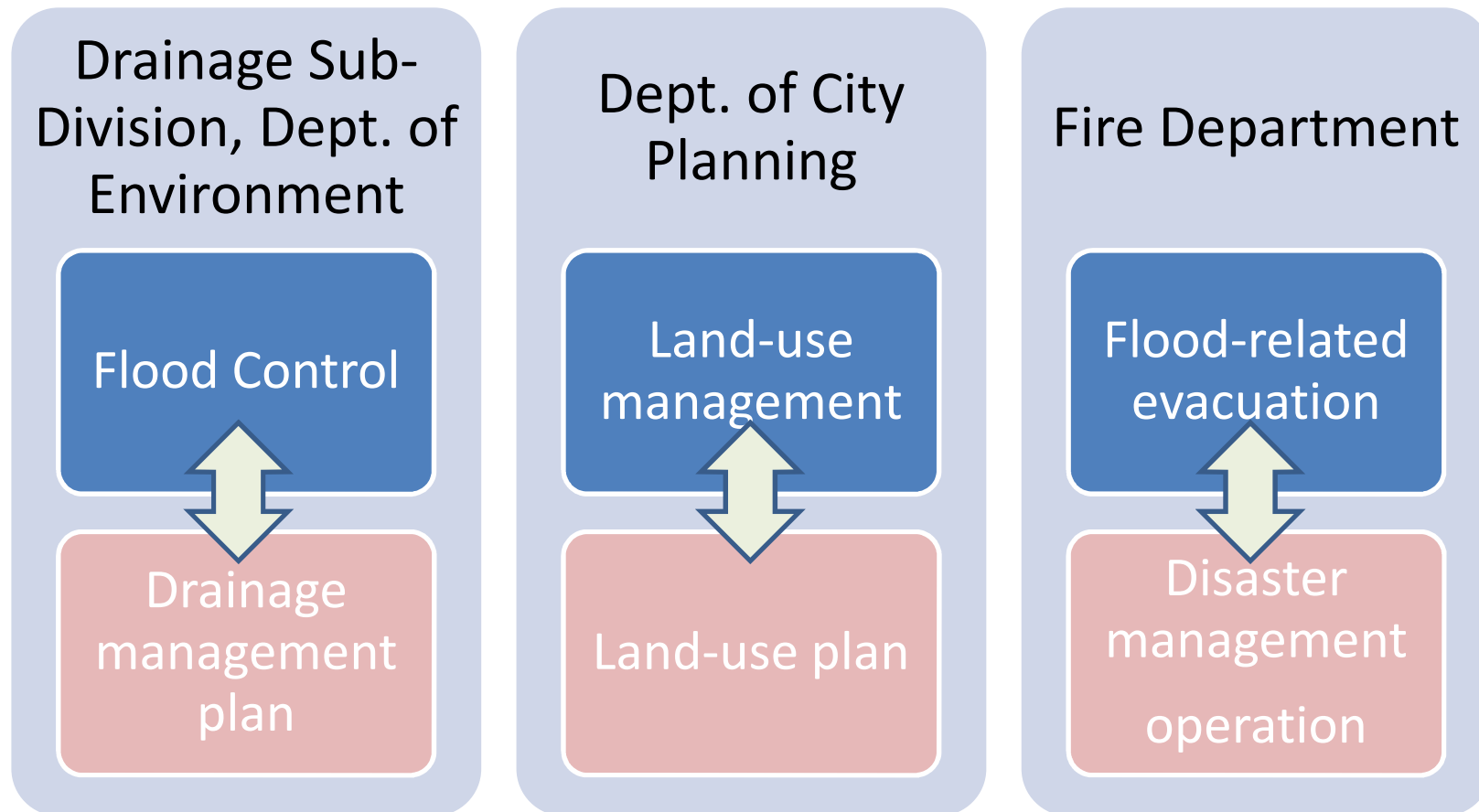


In actual response stage, these two must be integrated



But, in “adaptation world”, non-climate risk is often ignored and forgotten

# Bangkok Task Force on Adaptation



Where there is no stand-alone operation for adaptation, it is extremely important to think about how these adaptation actions should be integrated within their existing operation in a strengthened manner.



Thank you very much

kato@oecc.or.jp