

LESSONS LEARNT FROM CAPACITY BUILDING EFFORTS FOR LOCAL COMMUNITIES FOR CDM FORESTRY IN GHANA

Presentation on the efforts of ITTO and the Government of Ghana

Dr. Emmanuel Opuni-Frimpong

CSIR- Forestry Research Institute of Ghana

Email: eopunifr@mtu.edu/

eofrimpon@csir-forig.org.gh



OUTLINE OF THE PROJECT

- **SAMARTEX developed a highly successful community agroforestry model and has been operationalizing it.**
- **Aim is to add a CDM component to the agroforestry model to further promote forest restoration and thereby poverty alleviation in Ghana.**
- **To achieve this, develop community-based CDM forestry methodology and restore 100 ha of degraded forest land with the involvement of local communities.**



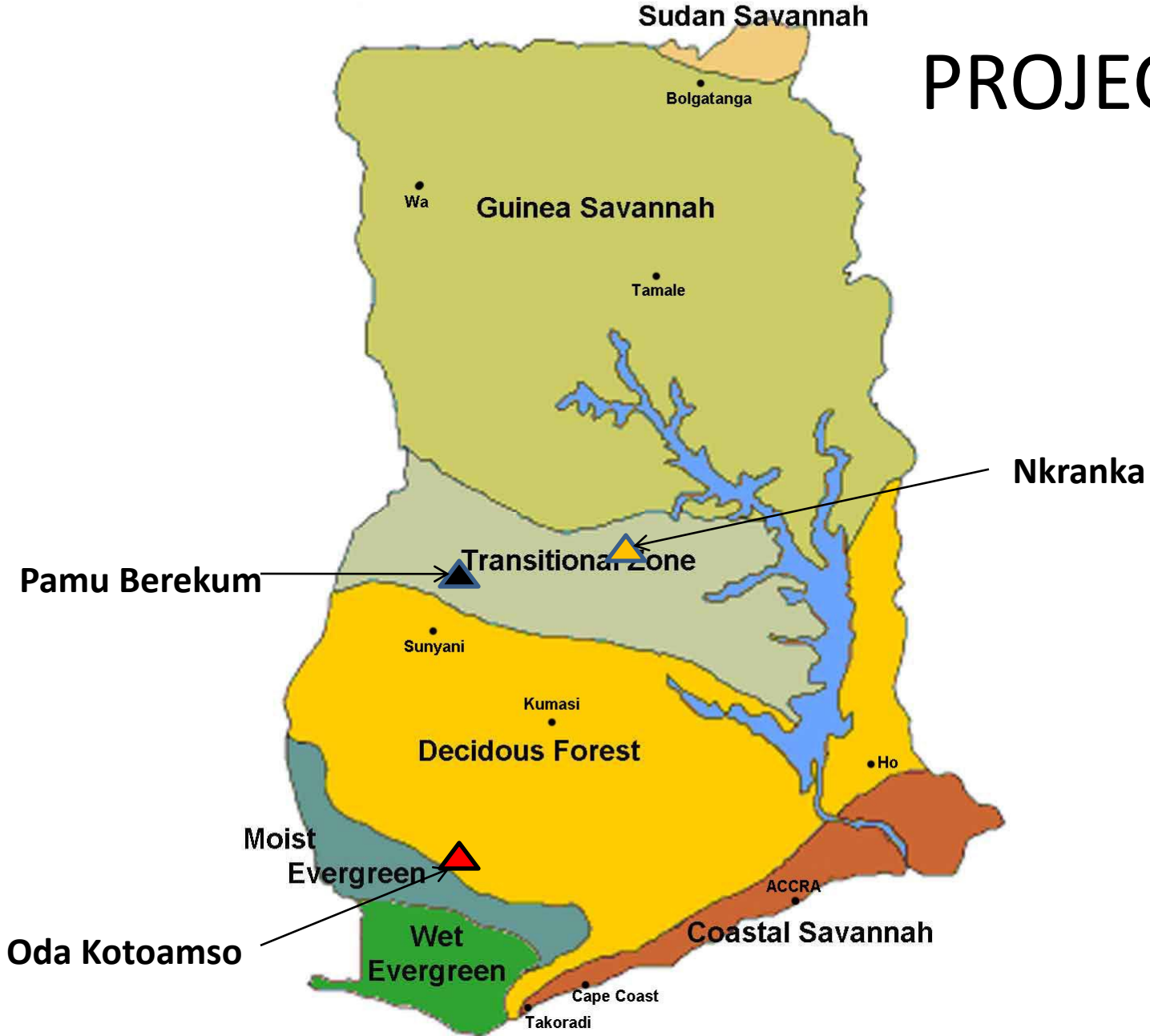
(1980s)

Pamu Berekum Forest Reserve



(2000)

PROJECT SITE



PROJECT BUDGET

Funding Agency

US\$

ITTO-----417,744

Ghana Government (in kind)-----104,438

Michigan Technological
University (Post Graduate Training)----94,500

SAMARTEX (in kind)-----49,200

TOTAL

665,882

INTERACTION WITH FOREST DEPENDENT COMMUNITY FARMERS



COMMUNITY NURSERY FOR FOREST RESTORATION WITH DIVERSE INDIGENOUS SPECIES



PARTICIPATORY WORKSHOP

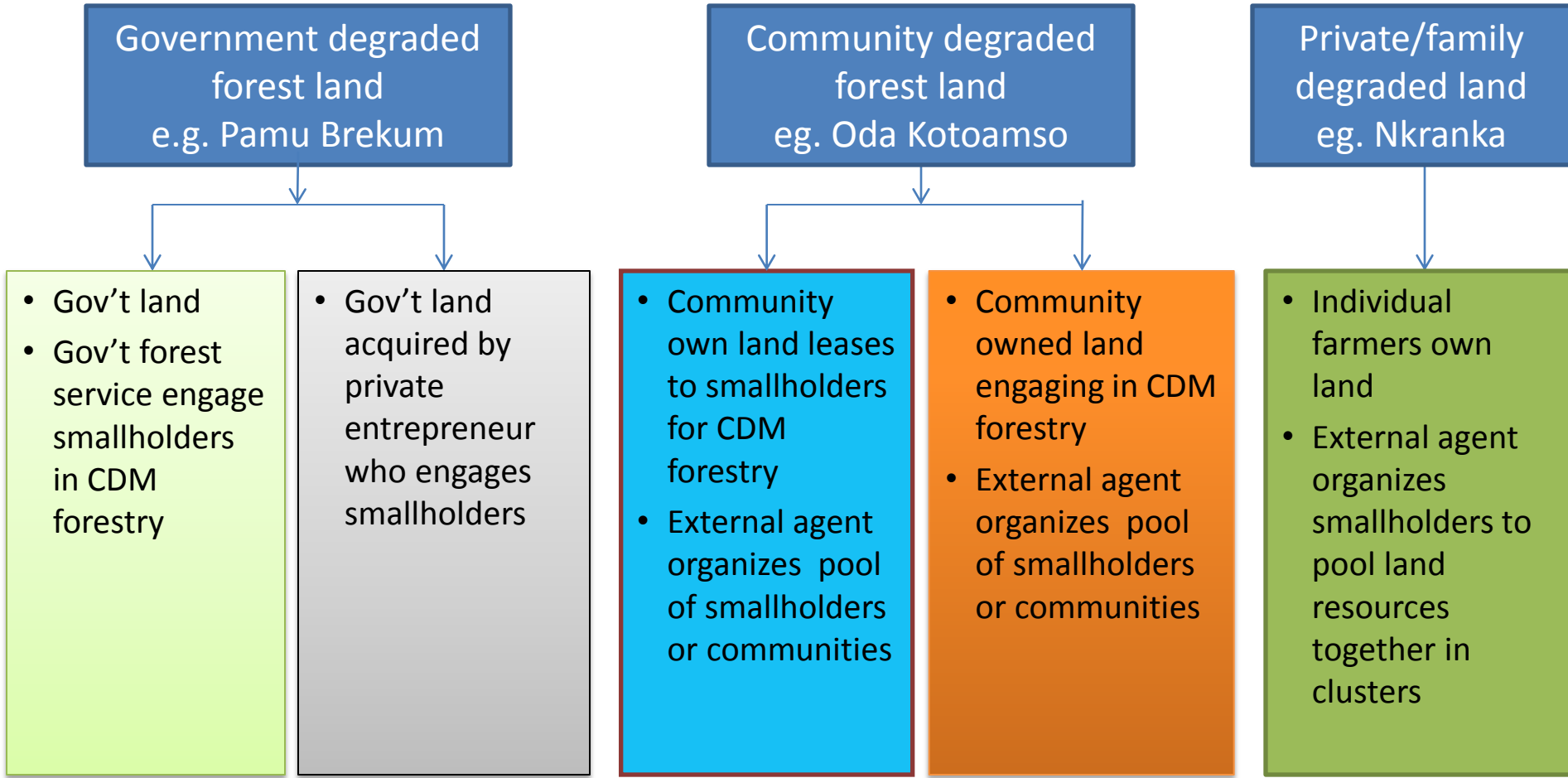


FOCUS OF THE PROJECT

Comparative analysis focusing on:

- **Community perceptions of CDM forestry**
 - Understanding
 - Requirements for local community participation
 - Expectation and likely impacts
 - Critical considerations
- **CDM and sustainable livelihoods**
 - Impacts on local livelihoods: financial, natural, social, physical and human capitals
 - Household income, employment, food production, forest products, local institutions, etc.
- **Governance/institutional mechanisms**
 - management arrangements, tenure, benefit sharing
- **Economics of smallholder CDM forestry**
 - Viability & cost effectiveness
 - Strategies for optimum benefits
 - Options for reducing risks and ensuring sustainability of CDM forests

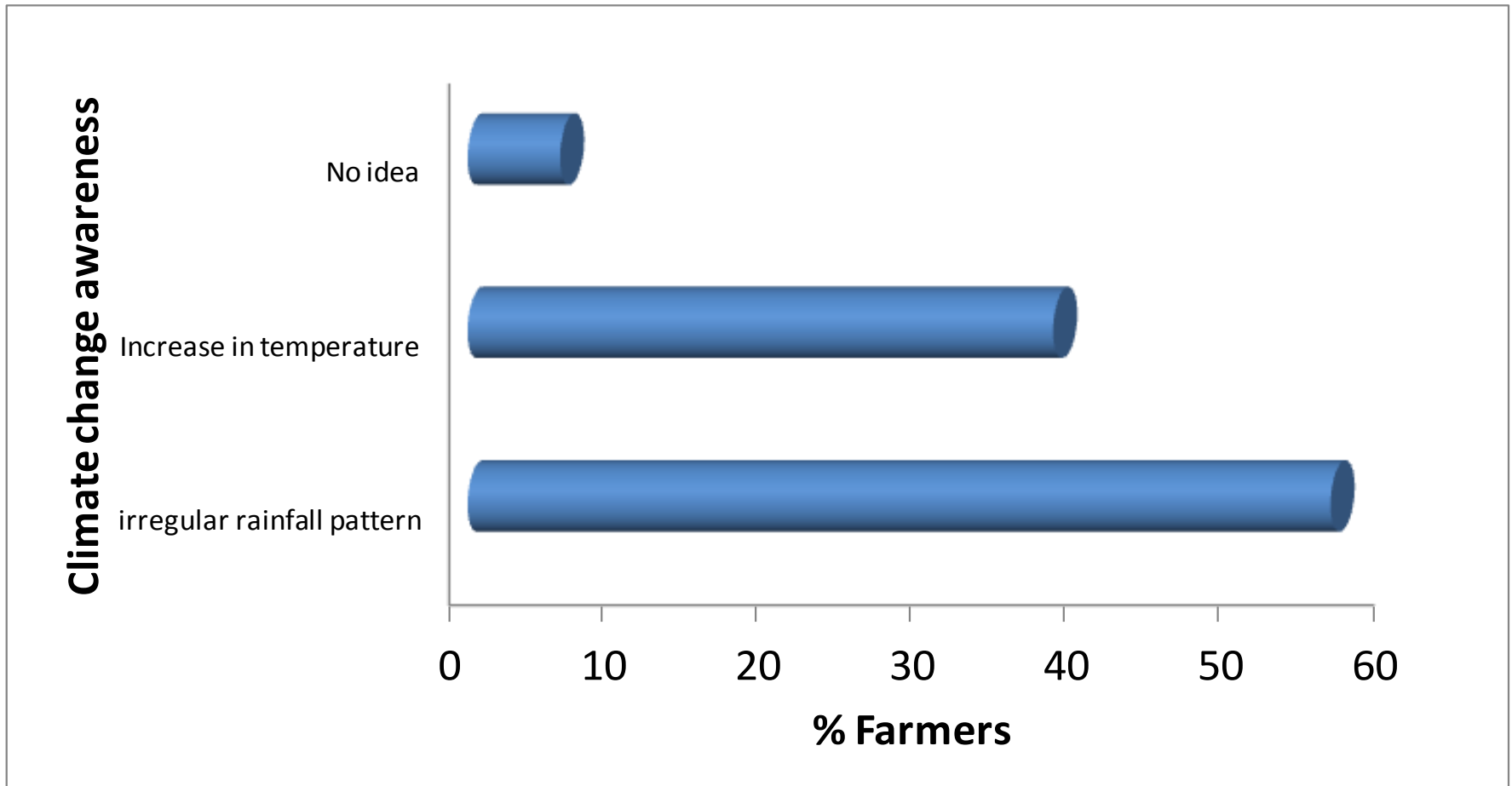
POTENTIAL CDM FORESTRY SCHEMES IN GHANA



Large expanse of land

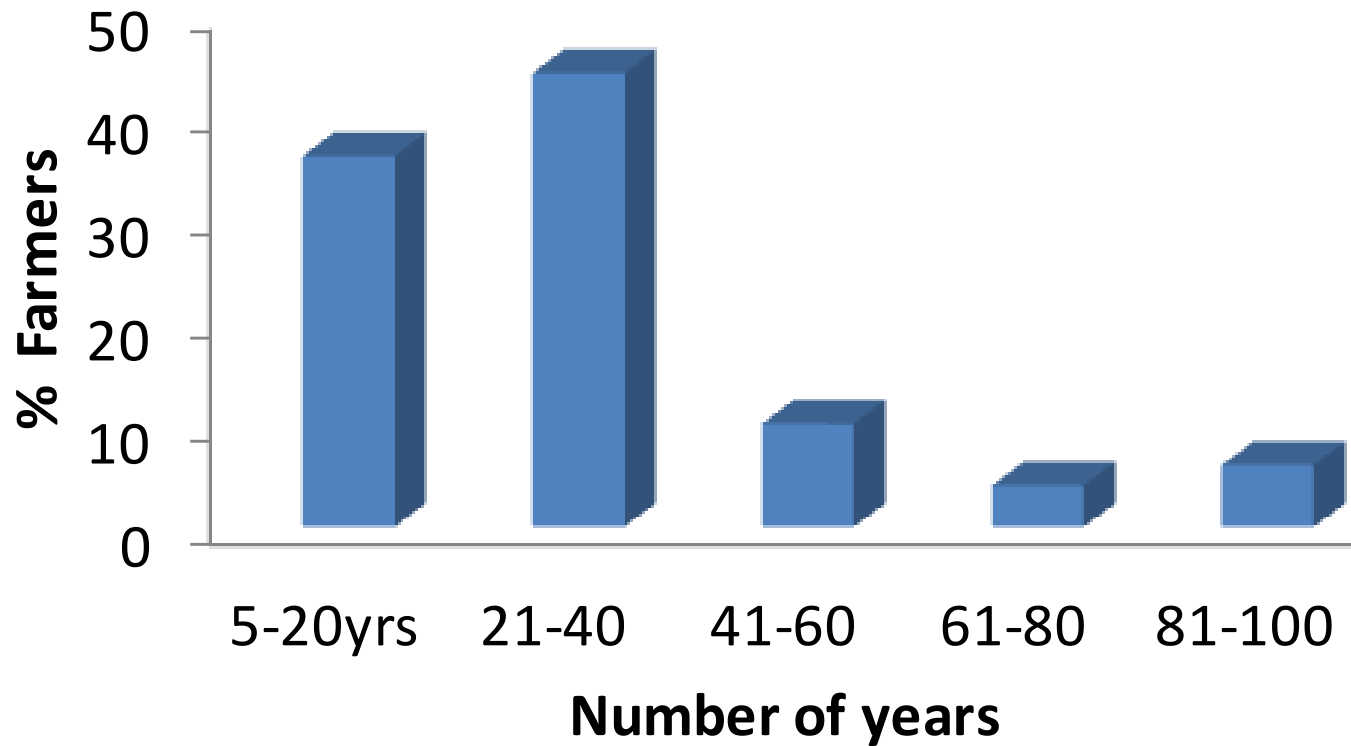
COMMUNITY PECEPTION

What is the impact of climate change?



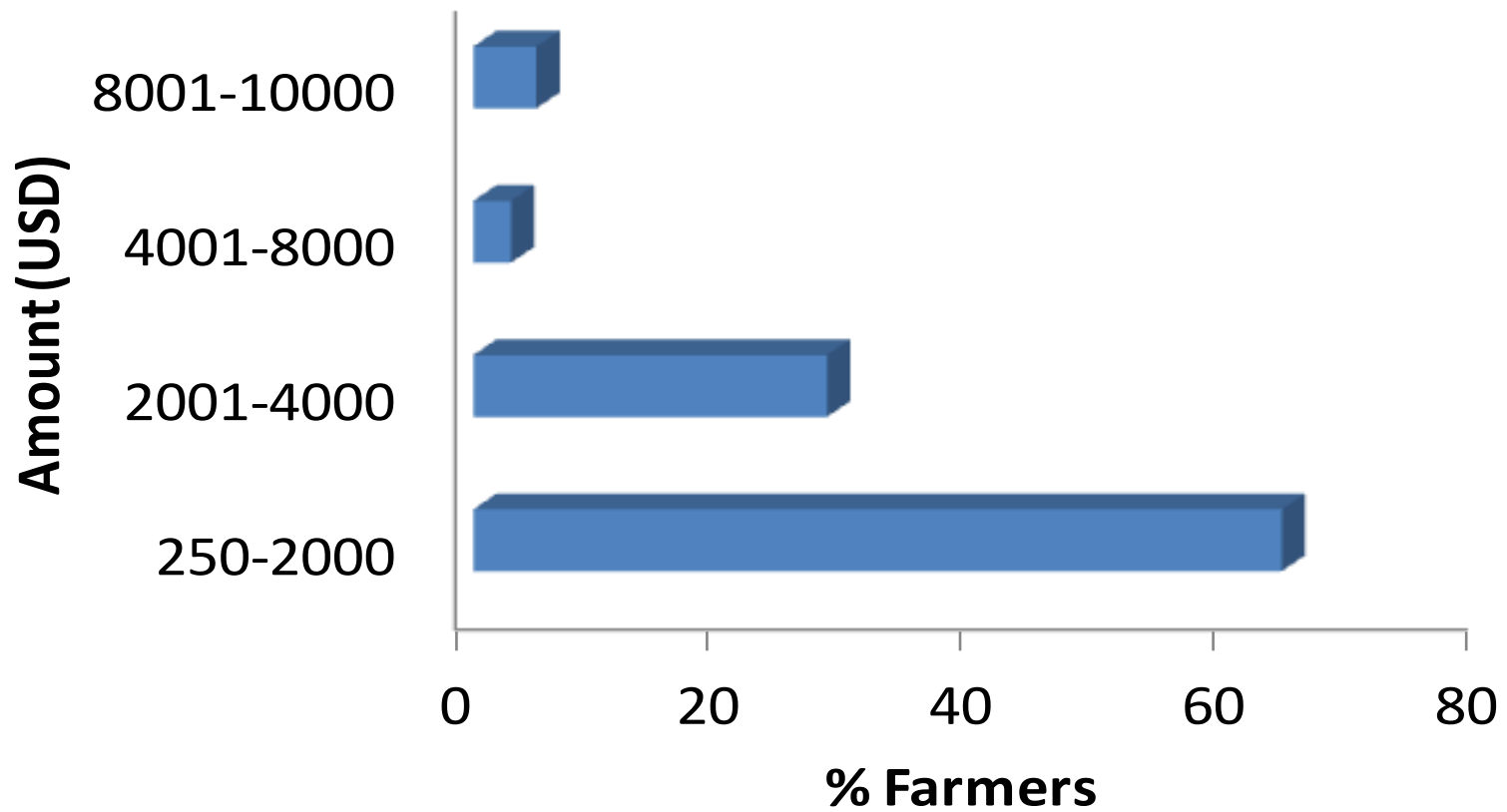
COMMUNITY PERCEPTION

How many years are farmers willing to keep CDM forests ?



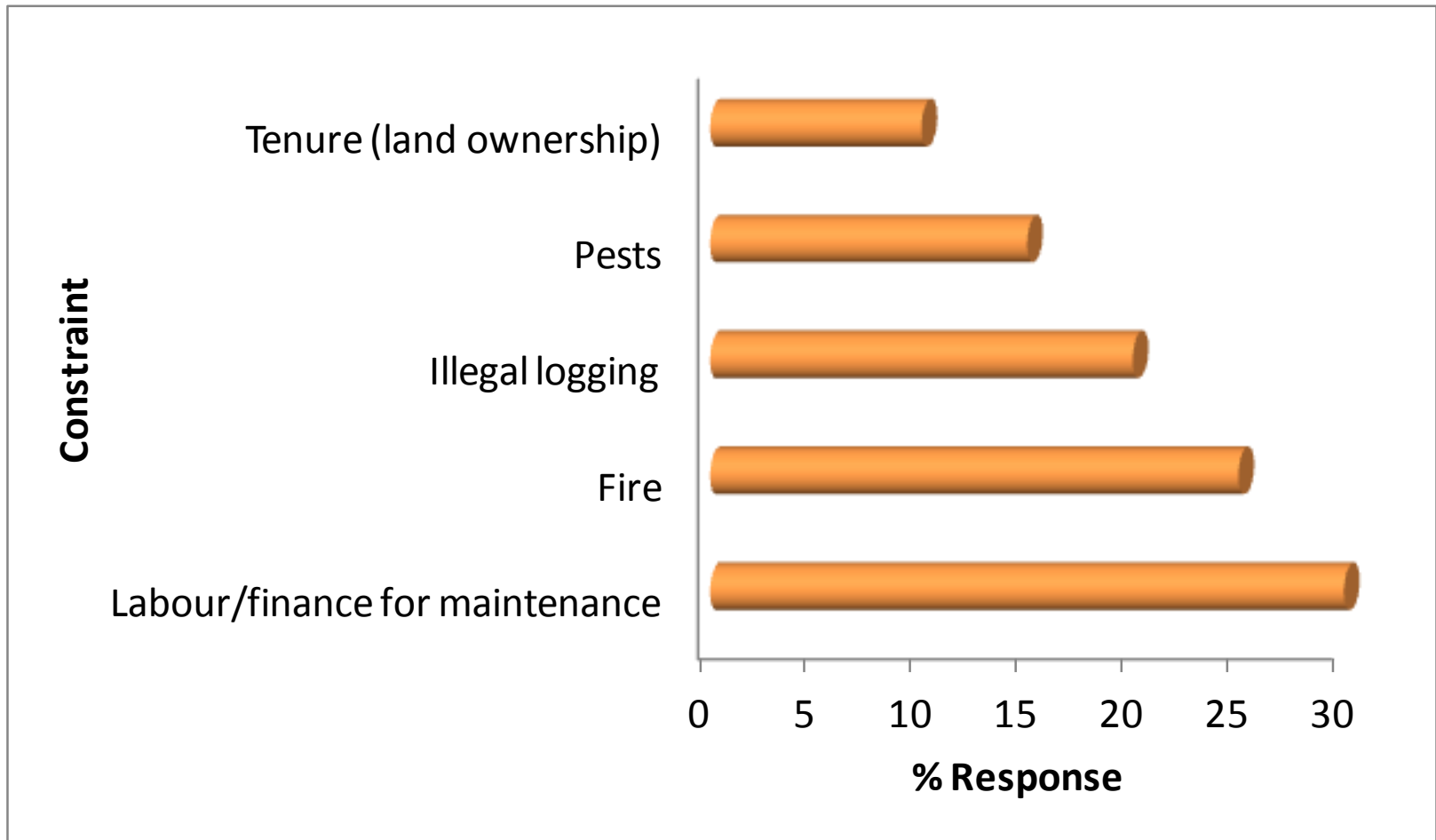
COMMUNITY PERCEPTION

How much income do farmers expect for CDM forestry?



COMMUNITY PERCEPTIONS

What are the constraints to CDM forestry?



BUILDING LOCAL CAPACITY

- **Training organized for farmers in nursery management**
- **Nursery equipment and seeds supplied to farmers every growing season**
- **Alternative livelihood activity - Bee keeping**
- **Internship on the project opened to Ghanaian and International students**
- **Project steering committee meetings with stakeholders: Forestry commission, FORIG, Community reps & donor agency**

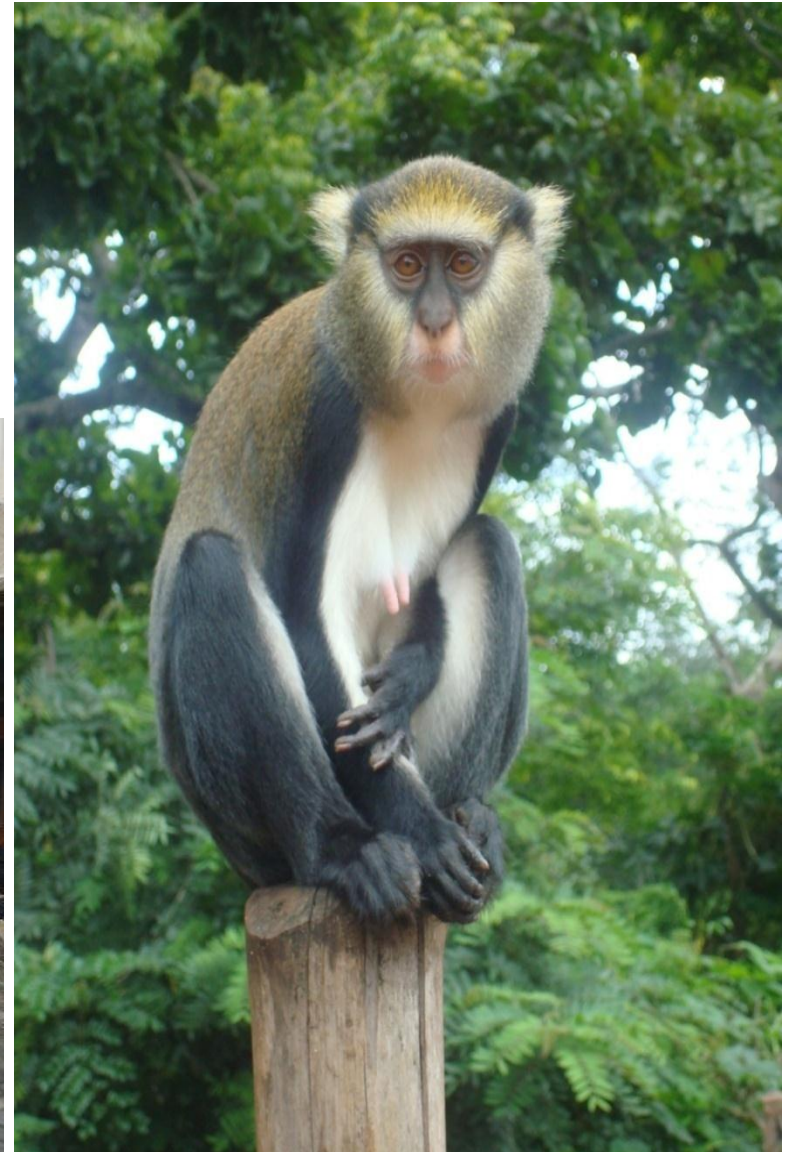
COMPLIANCE WITH REDD+SES

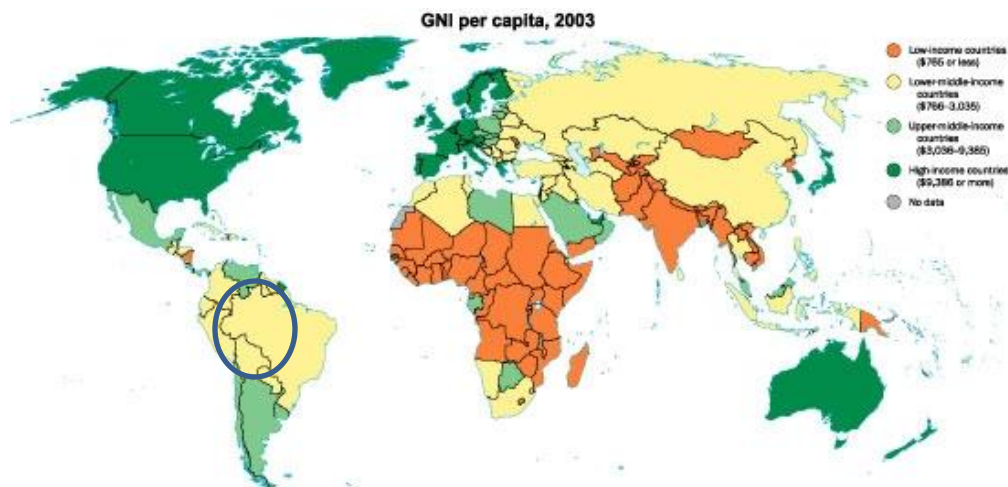
- **Respect for rights of forest dependent Peoples and local communities**
- **Equitable benefit sharing**
- **Benefits for forest Dependent Peoples and local communities improve human well-being**
- **Contribution to broader sustainable development**
- **Maintenance of biodiversity and ecosystem services**
- **Full and effective participation and access to information to stakeholders**
- **Compliance with national and international law**

PROJECT TEAM AND COMMUNITY FARMERS



THANK YOU FOR YOUR ATTENTION





CDM Forestry & Poverty Alleviation: Sustainable Forestry

OTHER AKNOWLEDGEMENTS



MichiganTech