

# **Introduction to Indonesia Japan – Project for Development of REDD+ Implementation Mechanism (IJ-REDD+ Project)**

by

GUN GUN HIDAYAT, Ph.D  
National Coordinator IJ-REDD+ Project  
Ministry of Forestry, Indonesia

Presented in Side Event Workshop of COP 19 at Japan Pavilion:  
Evaluation of the High Carbon Reservoirs :  
Tropical Peatland by Integrated MRV System



**Indonesia Japan – Project for Development of REDD+ Implementation Mechanism  
(IJ-REDD+ Project)**

# Outline

- Why REDD+
- What IJ-REDD+
- Why IJ-REDD+
- What IJREDD+
- Current Progress
- Conclusion

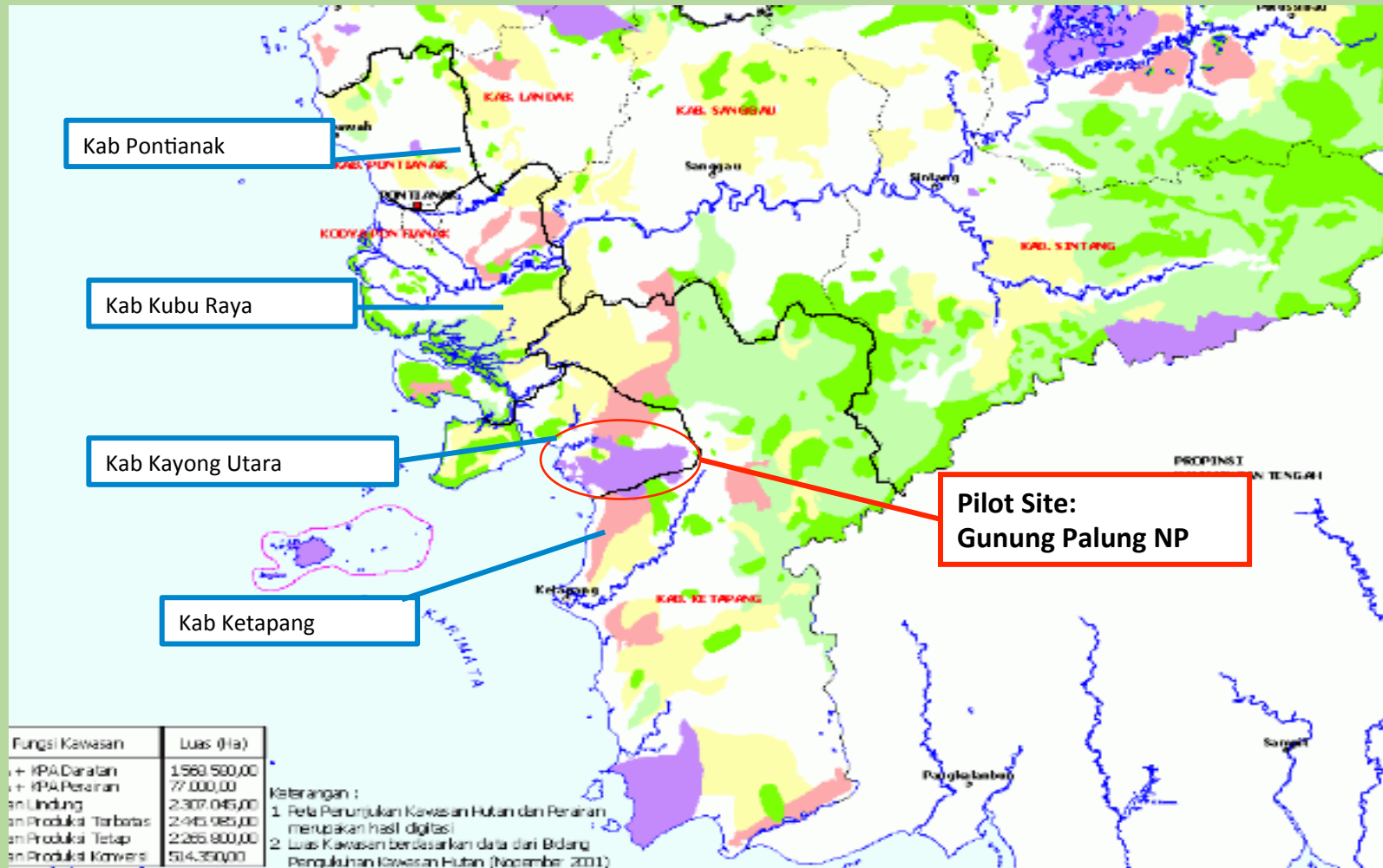
# Why REDD+

- Global concensus: COP-13/2007 (Bali Action Plan) dan SBSTA-29 Poznan/2008 resulted 5 Pilars of REDD+
- Commitment President SBY at G-20 Pittsburg and NAP/RAP-GHG : 87% contributed by forestry and peat land
- 5 Pilars of REDD+ promote improvement of forest governance (Sustainable Forest Management)
- Conserving Forest as source community welfare, economic development and sustainability of environmental from Forest
- Credit from REDD+ mechanism is environmental service from forests.

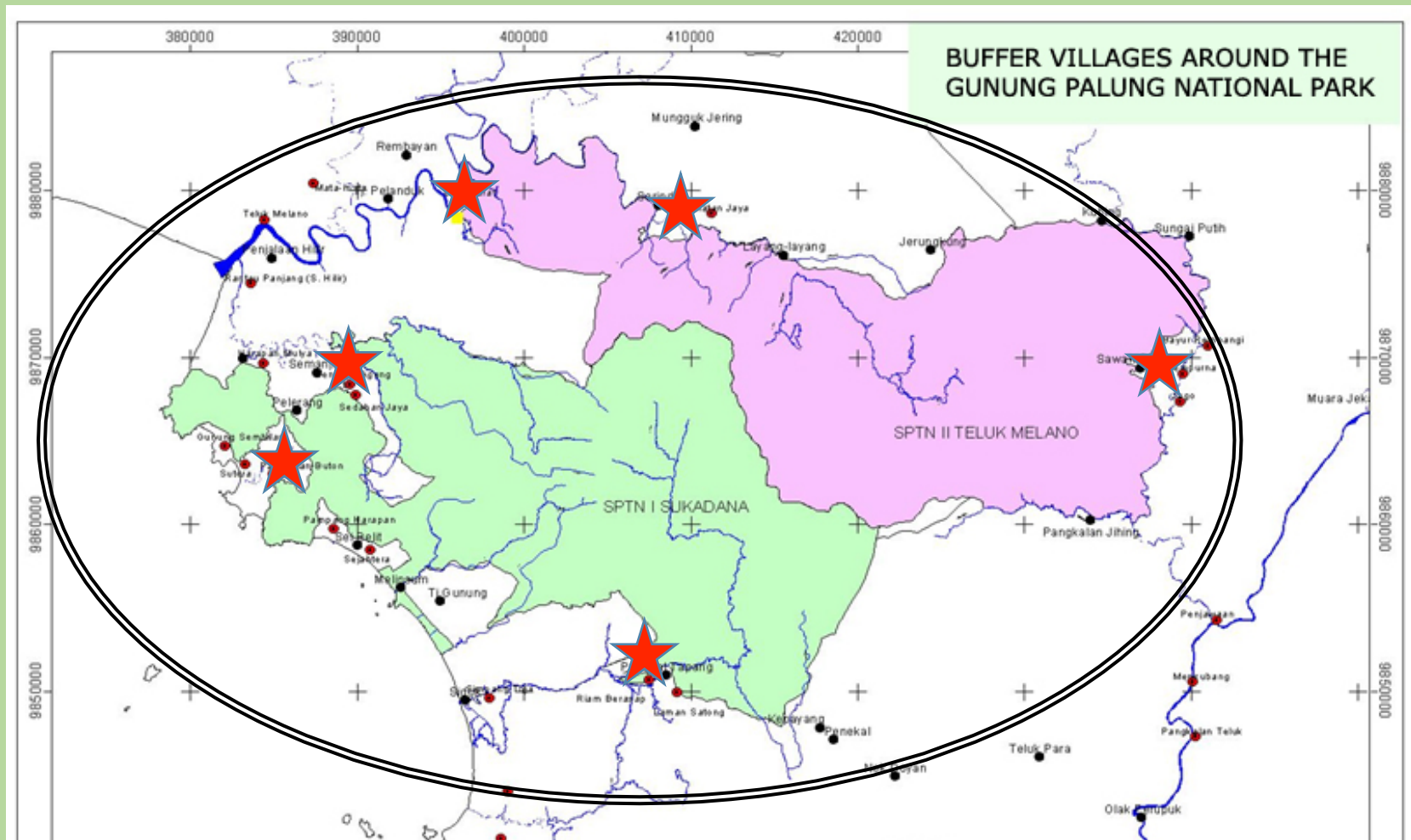
# What IJ-REDD+

- Technical Cooperation Agreement between JICA and MoFor , ROD signed on 4 February 2013
- 17 June 2013. Project was launched and formally operated
- Duration : 3 years (June 2013 – June 2016)
- Targeted Provinces : West Kalimantan (4 districts), Central Kalimantan & Gunung Palung National Park (6 villages)
- Project Offices : Jakarta, Pontianak, Ketapang and Palangkaraya

# Target Districts and Pilot Site in West Kalimantan



# Target in Gunung Palung NP



Collaborative Management (MDK): 2 +4 = 6 villages

REDD+ Survey: covering whole NP & outside boundary

# Why IJ-REDD+

## Challenges of REDD+ in Indonesia

- Development of Methodology for RL/MRV
- Governance and stakeholders involvement
- Anticipating “market or non-market” mechanism
- REDD+ activities are advanced and many, but least proportion compare to variety of cases.
- Variety of cases : combination of causes, management approach of forest, type of landscape, availability/suitability of monitoring system on forest resource and carbon emission

# Why IJ-REDD+ (Continue 1....)

- Multilateral vs Bilateral process: Joint Credit Mechanism (Japan)
- Miniatur to implement Bali Action Plan
- Promotion of National Strategy and development of Provincial Strategy and Action of REDD+ in region.
- Recognition and mainstreaming REDD+ into NAP/GHG, national and regional development
- Identify “Enabling condition” dan developing model for REDD+ at Conservation Area, and Production Forest/Protected Forest/ Other Land Use



# Why IJREDD+ (continue... 2)

## Why West Kalimantan

- Forest cover is still high (9.08 million Ha or 60,93% of land) including peat land ecosystem
- Pressure on forest from population, plantation and mining
- Intention of local government to conserve forest and improve community livelihood
- Follow up possible output /methodology from previous projects

## Why Central Kalimantan

- Internalize and mainstreaming SATREPS project result regarding development of MRV System
- Existing REDD+ institutions: WG REDD+ and Provincial Strategy for REDD+

# Experiences with Related Japanese Technical Cooperation

Support to Policy

Strengthening Capacity of Central and Local Government

Improving/ Strengthening Community

Support to fields

## Forest Conservation

## Biodiversity Conservation

Facilitation the Implementation of National Forestry Strategic Plan 2009-2012

Ecosystem Management and Biodiversity Conservation advisory 2008-2010

### REDD+ / Forest Resources Management & Carbon Stock Monitoring

**Improvement the Accuracy of Forest Resource Management through Satellite**  
Forest Resources Management through Satellite Image 2008-2011

**Fire Detection / Carbon Management/ Evaluation System on Carbon Stock**  
JICA-JST Wild Fire and Carbon Management in Peat-Forest (with BSN) 2010-2015

### Suppression/Prevention & Minimize Degradation due to Forest Fire

Community Development of Fires Control in Peat Land Area, 2010-2015

### Mangrove Conservation/ Regreening

ASEAN Cooperation on Mangrove Ecosystems Conservation 2011-2016

### Restoration of Conservation Area

Capacity Building for Restoration of Ecosystems in Conservation Areas 2010-2015

### Conservation of Biodiversity and Conservation Area

Strengthening Biodiversity Conservation through Appropriate NP Management and Human Resource Development 2009-2012

### Effectiveness of Forest Resource Utilization /Improve livelihood

Facilitating Development of Wood Industry in Small Diameter Logs Processing 2011-2013

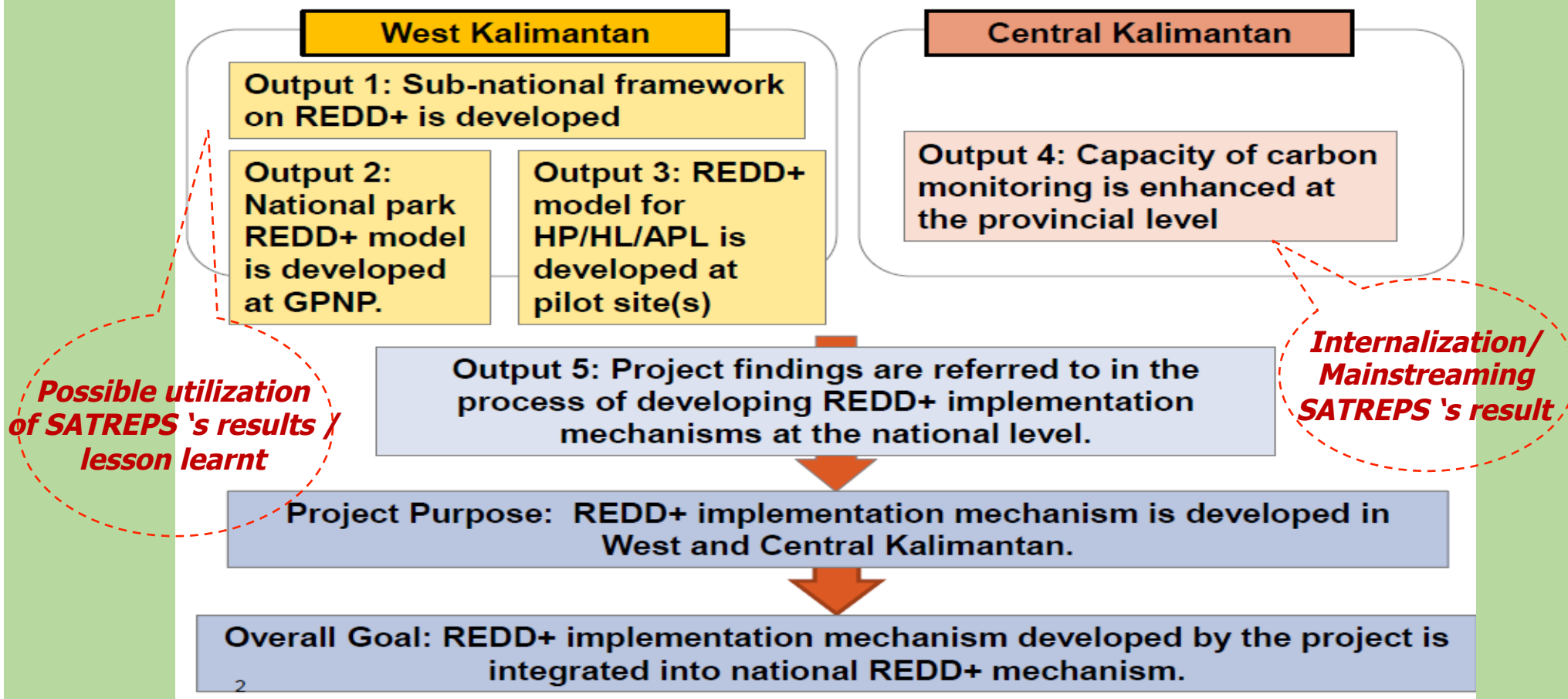
### IJ-REDD+ Project (June 2013-2016)

Forest Conservation, SFM, Sustainable Development

REDD+



## IJ-REDD+ Implementation Image



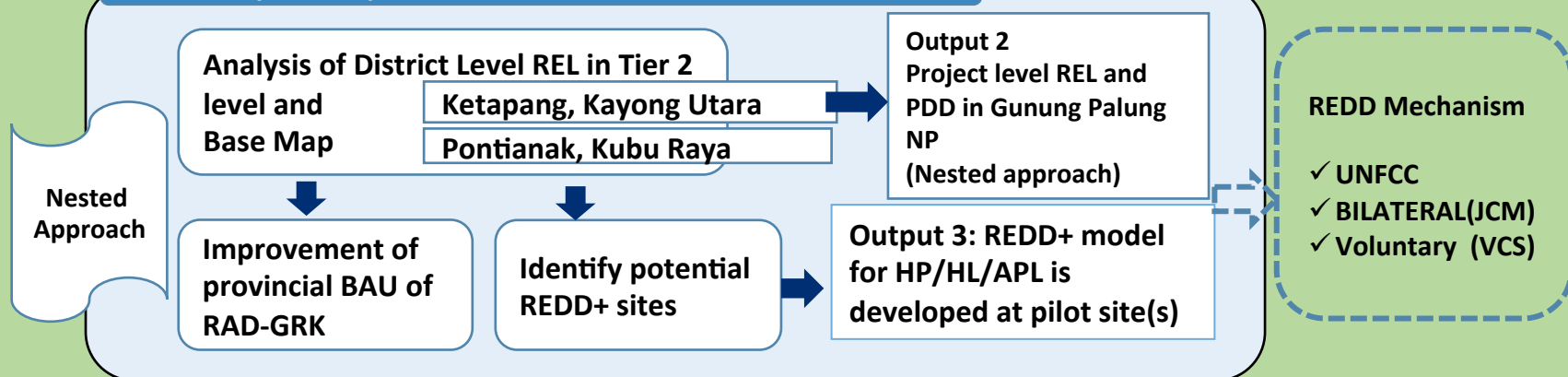
Indonesia Japan - Project for Development of REDD+ Implementation Mechanism (IJ-REDD+ Project)

# Output 1

## Setting up

- Forming a team (technical committee) consist of JICA team, Provincial Government , University, UPT of MoFor
- Workshops on REDD+ and Climate Change in West Kalimantan

## REL analysis and potential REDD+ sites



## Capacity building of MRV

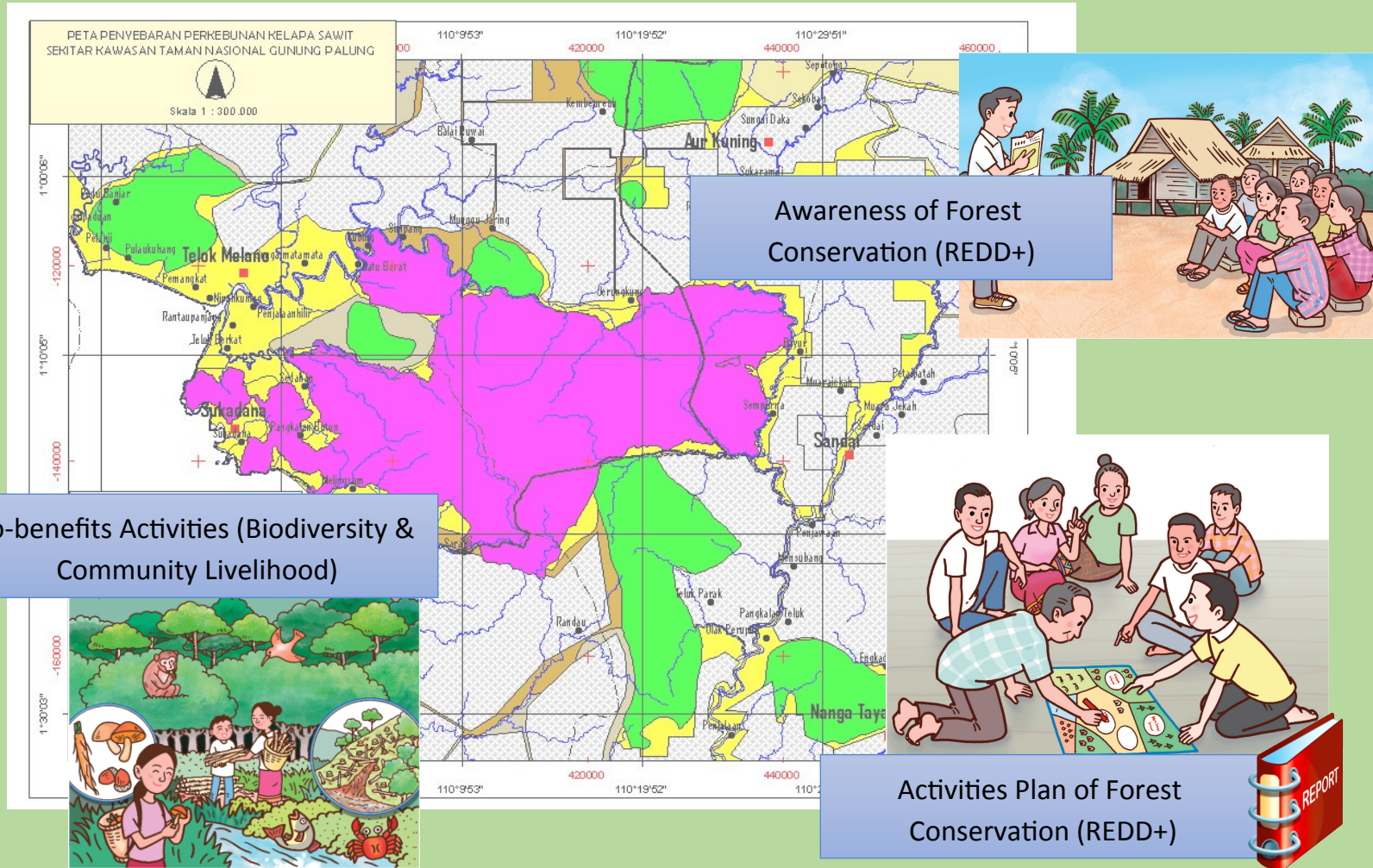
- Develop MRV plan
- Training for MRV (GIS, Satellite image Analysis) - Training in Japan, Local training  
Input: GIS software, satellite image

## Policy formulation and implementation support

- Formulation of Provincial REDD+ Strategy
- RAD-GRK implementation support  
(collaboration with JICA peat fire prevention project)

# Output 2. National Park REDD+ Model Gunung Palung National Park

# Output 3. REDD+ Model Production /Protected Forest



## Current Progress

1. Kick-off Workshop  
West Kalimantan Province  
(1 October 2013)
2. Comparative Study and  
Facilitation Training for  
National Park Officers  
(September 2013)
3. Kick-off Meeting National  
Park (December 2013)



Indonesia Japan – Project for Development of REDD+ Implementation Mechanism  
(IJ-REDD+ Project)

# Conclusion

1. IJREDD+ Project becomes:
  - Review the forestry status and its potency
  - Reminder for SFM practice
  - Facilitate repackaging SFM to REDD+ framework
2. Positive response from government and stakeholders
3. Coordination and facilitation works to ensure acceptance, synergy and collaboration, and work plan implementation



Indonesia Japan – Project for Development of REDD+ Implementation Mechanism  
(IJ-REDD+ Project)

# **TERIMA KASIH**

# **Arigatou gozaimsu**



Indonesia Japan – Project for Development of REDD+ Implementation Mechanism  
(IJ-REDD+ Project)