

12th Korea·China·Japan Environmental Education Network Workshop/Symposium
25-27 October 2011, Gyeongju, Republic of Korea



Green University

Case of
{University of International
Business & Economics}

JU Jian
SHI Ge
HE Huihuan



Outline



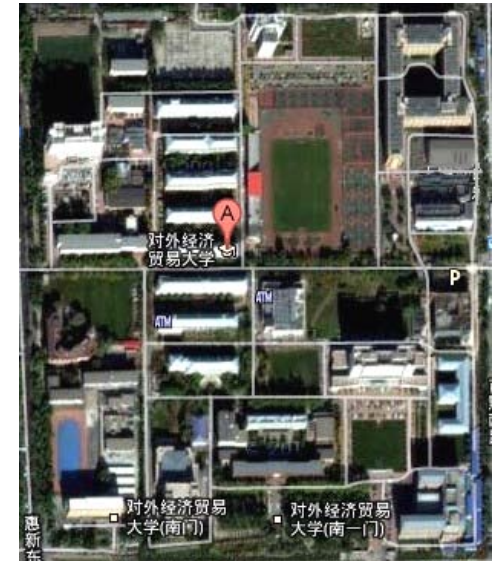
- UIBE Introduction
- Basic Principles
 - Green Campus
 - Facilities
 - Scenery
 - Green Education
 - Green Research



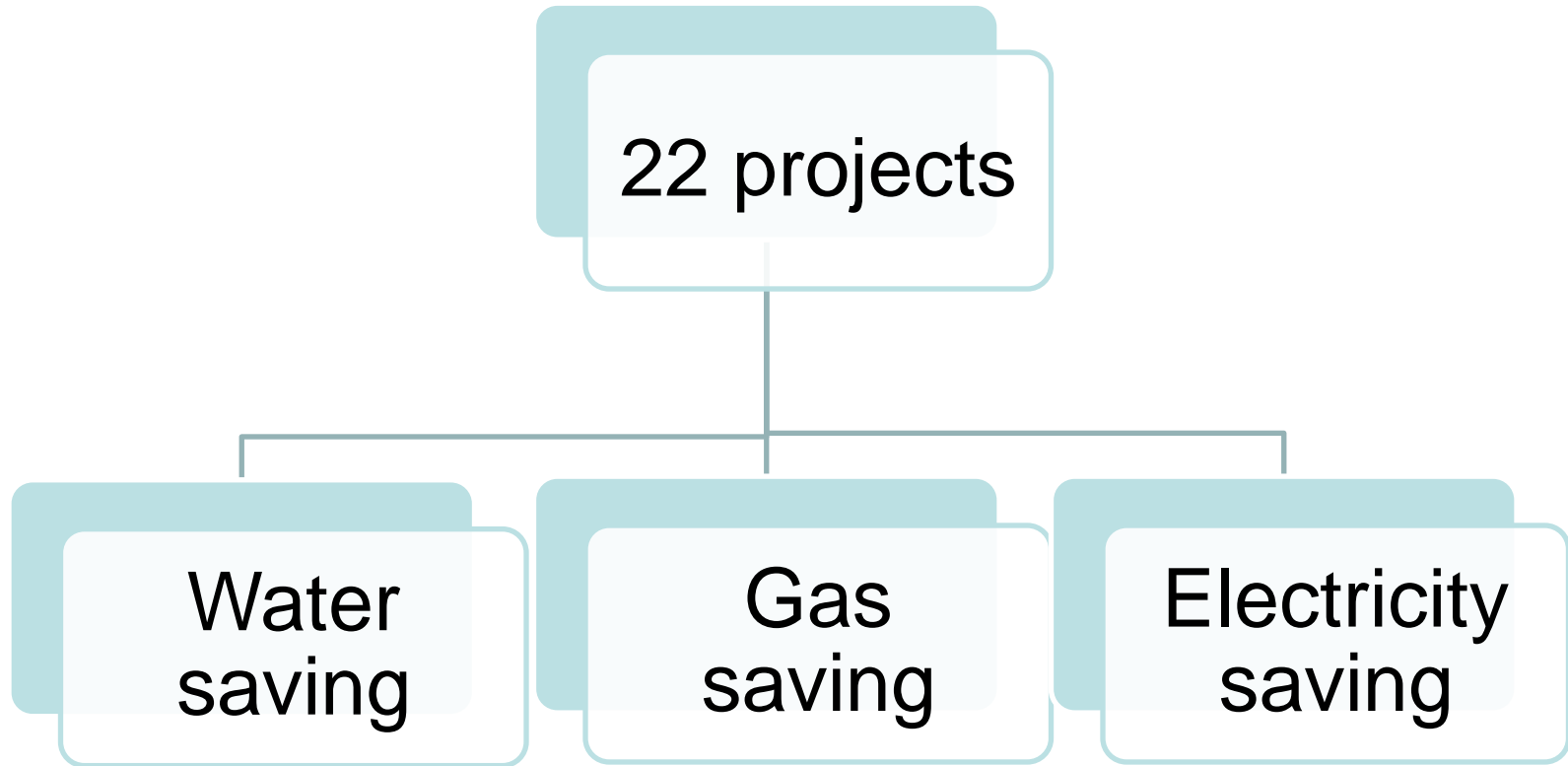
UIBE Introduction



- Small (350 000 m²)
- 11300 students & 770 staff
- Idea of building Green University
 - generated in 2000
 - Investment: 80 million RMB
 - Public expenditure saving: 11.8 million RMB annually



1. Green Campus

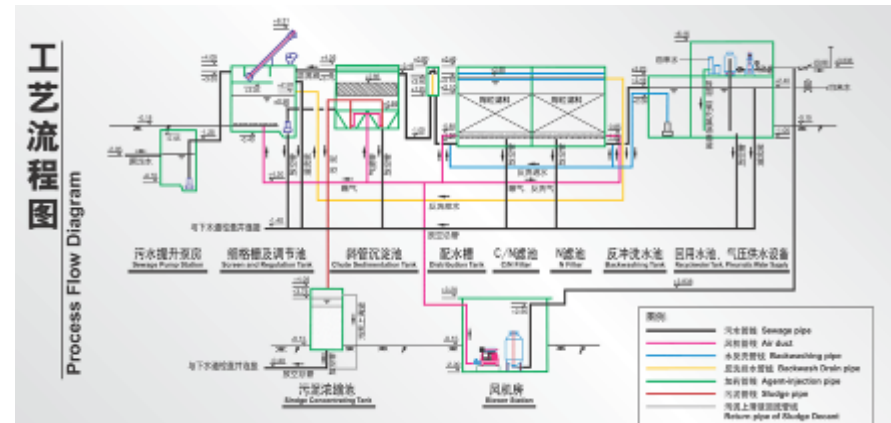


Water saving



1. Constructing water treatment stations and recycling sewage.

2. Laying down grey water pipelines





3. Converting flat roofs to pitched slopes, and building underground water caverns to reserve raindrops

4. Applying membrane technology to deal with septic supernatant.



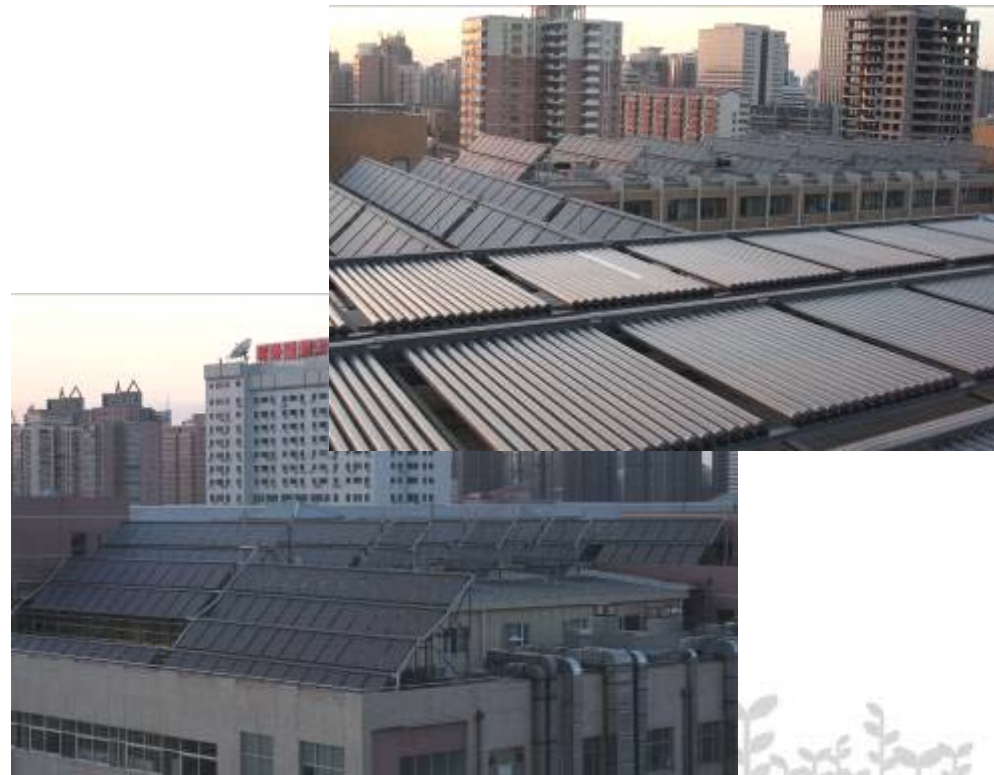
Gas saving



1. Energy-efficient heating system (time, area, buildings)



2. Bathing water heated by solar energy, a shift from the overuse of natural gas in the past.





3. Waste heat collected from boilers to reduce the use of natural gas.



4. Reconstructing the exterior walls of buildings to utilize efficiency





5. Water source heat pump –
used in library to stay in a
proper temperature



6. Ground source heat pump –
used in Research Building to
stay in a proper temperature



Electricity saving



1. Sensors installed in public areas, detecting human movement to control lighting devices and save electricity.



2. Smart meters distributed and tied to each dorm.





3. Advanced lighting devices (LED) widely used to save electricity.



4. Power-distribution room renovation





5. Street lights on solar energy (420 in number) and wind power utilized whenever possible.





Projects	Reduced Cost (thousand RMB)	Saved Water (cubic meter)	Reduced Carbon Emission (tons)
Water Saving	1200	360,000	
Gas Saving	9037.7		12113.09
Electricity Saving	1929.1		1128.96
Total	12166.8	360,000	13242.05



Green Campus -- Scenery



2. Green Education



UIBE Green Association

-- founded in 1998

-- various on-campus & off-campus activities



2. Green Education



Earth Hour



Recycling Campaign



2. Green Education



Environment Volunteer



3. Green Research



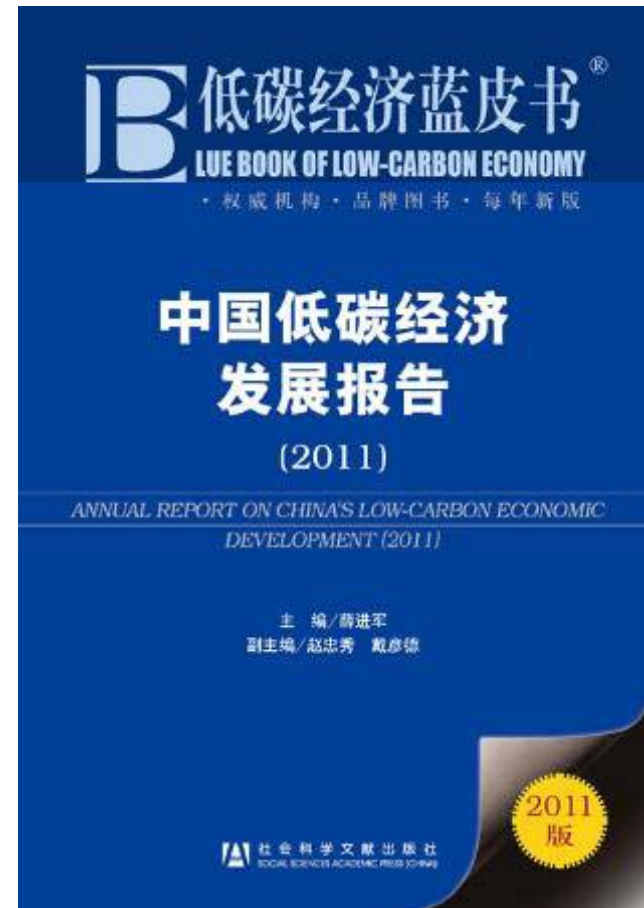
China Center for Energy Economics Research (2008)

- organize academic activities on energy economy



Institute of Global Low-carbon Economy (2010)

-
-





The End

Green Actions Never End...

