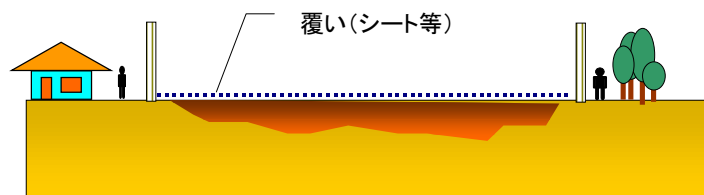
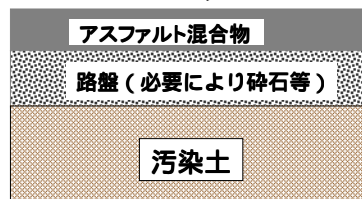


## ①立入禁止措置

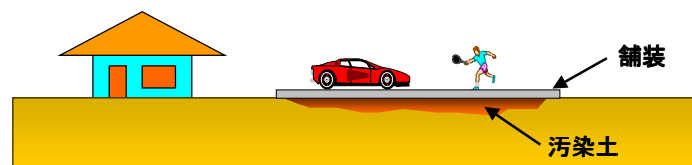
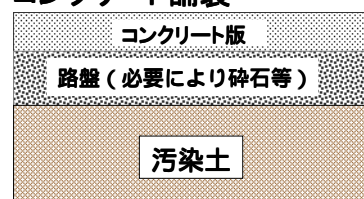


## ②舗装措置

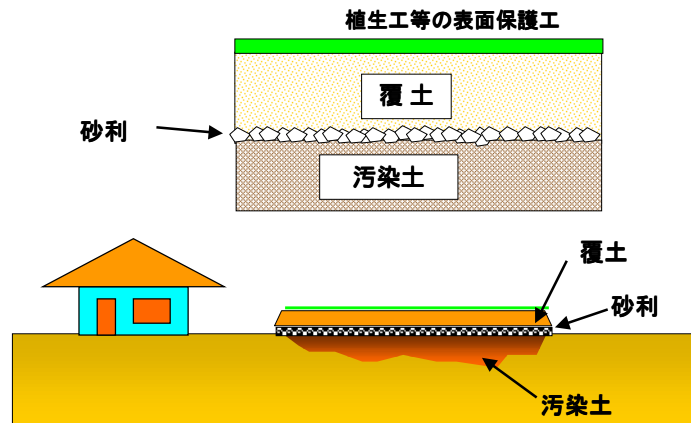
### アスファルト舗装



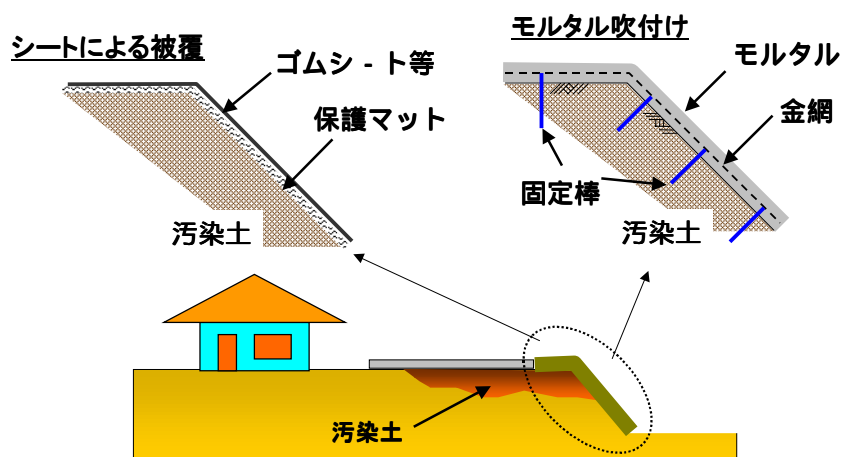
### コンクリート舗装



### ③覆土(盛土)措置

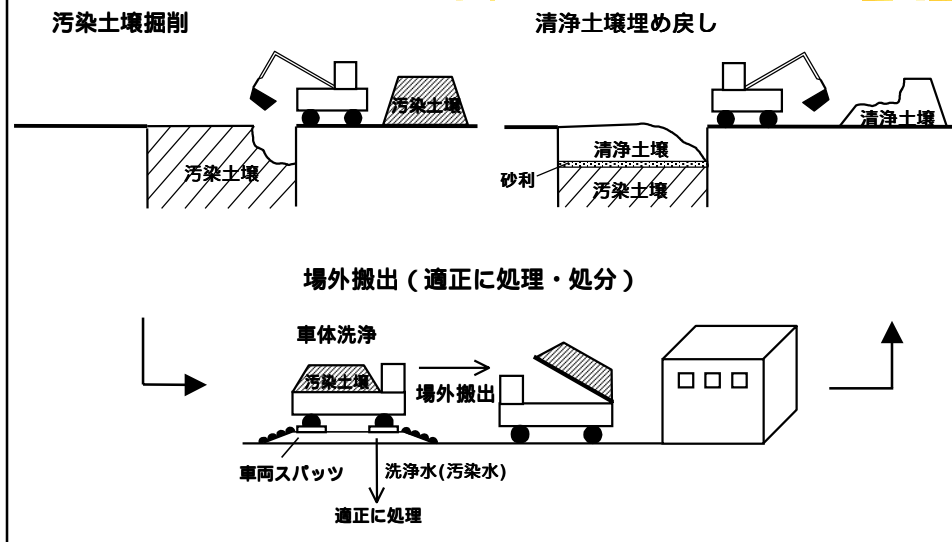


### ④その他の覆い措置



## ⑤ 指定区域外土壌入れ換え措置

汚染土壌掘削→場外搬出→清浄土壌埋め戻し



## ⑥ 指定区域内土壌入れ換え措置

清浄土壌+汚染土壌の掘削→天地返し

