

FY2020 Gunma Prefecture Survey Results

[Outline of results]

(1) Water

Rivers

Radioactive cesium (Cs-134, Cs-137): Not detectable at any location

Lakes and reservoirs

Radioactive cesium (Cs-134, Cs-137): Not detectable at any location

(2) Sediments

Rivers

Cs-134: ND - 28 Bq/kg (dry)

Cs-137: 0.81 - 500 Bq/kg (dry)

Lakes and reservoirs

Cs-134: ND - 150 Bq/kg (dry)

Cs-137: 45 - 3,000 Bq/kg (dry)

(3) Surrounding Environment

(a) Soil

Rivers

Cs-134: ND - 150 Bq/kg (dry)

Cs-137: 2.7 - 3,000 Bq/kg (dry)

Lakes and reservoirs

Cs-134: ND - 590 Bq/kg (dry)

Cs-137: 14 - 11,000 Bq/kg (dry)

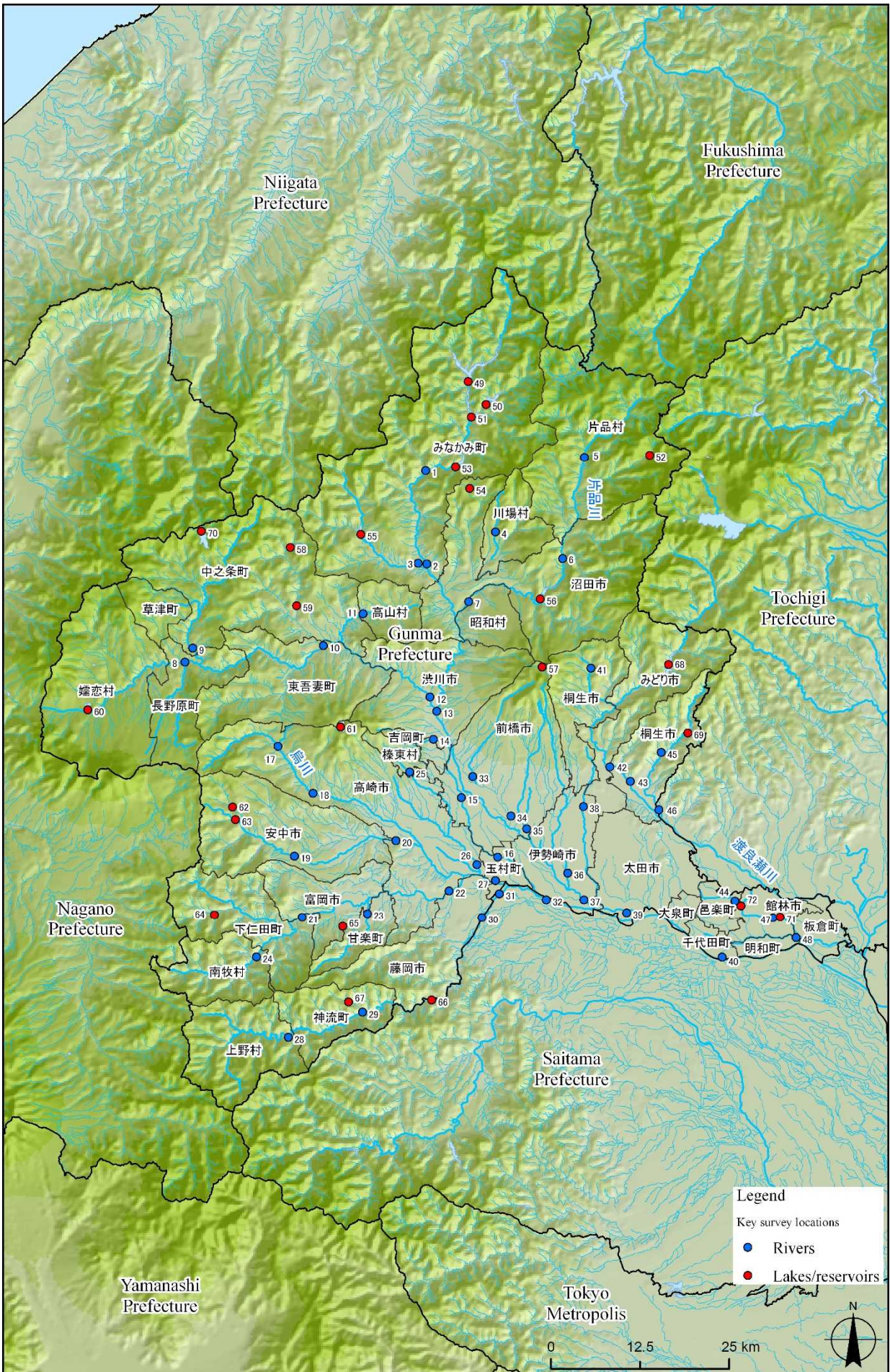
(b) Ambient dose rate

Rivers

0.04 - 0.08 μ Sv/h

Lakes and reservoirs

0.04 - 0.14 μ Sv/h



Survey Locations (Gunma Prefecture)