

FY2015 Ibaraki Prefecture Survey Results

[Survey Results]

(1) Water

Rivers

Radioactive cesium (Cs-134, Cs-137): Not detectable at any location

Lakes and reservoirs

Radioactive cesium (Cs-134, Cs-137): Not detectable at any location

Coastal areas

Radioactive cesium (Cs-134, Cs-137): Not detectable at any location

(2) Sediments

Rivers

Cs-134: ND - 360 Bq/kg (dry)

Cs-137: 0.95 - 1,800 Bq/kg (dry)

Lakes and reservoirs

Cs-134: 12 - 590 Bq/kg (dry)

Cs-137: 49 - 2,500 Bq/kg (dry)

Coastal areas

Cs-134: ND - 28 Bq/kg (dry)

Cs-137: 1.4 - 150 Bq/kg (dry)

(3) Surrounding Environment

(a) Soil

Rivers

Cs-134: ND - 950 Bq/kg (dry)

Cs-137: ND - 3,700 Bq/kg (dry)

Lakes and reservoirs

Cs-134: ND - 410 Bq/kg (dry)

Cs-137: 19 - 1,600 Bq/kg (dry)

(b) Ambient dose rate

Rivers

0.04 - 0.22 μ Sv/h

Lakes and reservoirs

0.04 - 0.15 μ Sv/h

Ibaraki Rivers (Water) 1/5

No.	Location			Sampling Date	Weather	Air temperature (°C)	Water depth (m)	Water										Remarks
	Water area	Location	Municipality					General items							Activity concentration(Bq/L)			
								Water temperature (°C)	Sampling depth (m)	Color	Odor	Transparency (cm)	Electrical conductivity (mS/m)	SS (mg/L)	Turbidity (FNU)	Radioactive cesium		
R i v e r s	1	Satone River	Yamagoya Bridge	Kitaibaraki City	2015/5/30	Cloudy	22.6	0.3	15.5	0.0	Dark grayish yellow green	None	>100	12.7	2	1.3	<-0.42	<-0.55
					2015/8/22	Cloudy	26.2	0.2	18.8	0.0	Grayish blue green	None	>100	12.8	2	1.0	<-0.85	<-0.48
					2015/11/7	Cloudy	13.8	0.2	12.1	0.0	Grayish blue green	None	>100	11.7	3	0.9	<-0.62	<-0.88
			2016/2/2		Sunny	-1.5	0.2	3.3	0.0	Grayish blue green	None	>100	13.0	2	1.4	<-0.59	<-0.84	
			2015/5/30		Sunny	24.5	0.2	22.2	0.0	Grayish greenish yellow	None	>100	20.3	2	1.4	<-0.69	<-0.80	
			2015/8/22		Cloudy	27.0	0.2	21.6	0.0	Grayish blue green	None	>100	18.4	3	1.5	<-0.70	<-0.66	
		2	Murayama Bridge		2015/11/7	Cloudy	16.3	0.3	13.0	0.0	Grayish greenish yellow	None	>100	17.1	1	0.6	<-0.81	<-0.80
					2016/2/2	Sunny	4.5	0.3	4.2	0.0	Grayish blue green	None	>100	19.6	<1	0.7	<-0.68	<-0.80
					2015/5/30	Sunny	23.4	0.5	14.5	0.0	Grayish yellow	None	>100	6.2	<1	0.5	<-0.85	<-0.75
					2015/8/21	Cloudy	24.0	0.4	19.1	0.0	Light grayish yellow green	None	>100	6.6	<1	0.4	<-0.87	<-0.80
					2015/11/6	Sunny	17.2	0.3	11.2	0.0	Light grayish yellow	None	>100	6.6	2	0.5	<-0.65	<-0.75
					2016/2/25	Sunny	5.0	0.4	4.6	0.0	Grayish yellow	None	>100	6.3	<1	0.3	<-0.89	<-0.99
	3	Hanazono River	Kurabeishi		2015/5/31	Sunny	25.6	0.4	19.1	0.0	Dark grayish yellow green	None	80	36.1	6	3.3	<-0.84	<-0.61
					2015/8/22	Sunny	28.2	0.4	25.8	0.0	Dark grayish yellow green	None	>100	18.7	3	2.3	<-0.78	<-0.55
					2015/11/7	Cloudy	18.0	0.3	14.6	0.0	Grayish blue green	None	>100	41.7	2	0.9	<-0.67	<-0.92
					2016/2/2	Sunny	7.8	0.2	5.2	0.0	Grayish blue green	None	88	40.9	2	1.9	<-0.66	<-0.84
					2015/5/30	Sunny	22.4	0.3	13.8	0.0	Grayish blue green	None	>100	6.7	3	0.9	<-0.95	<-0.61
					2015/8/22	Cloudy	28.5	0.3	19.5	0.0	Grayish blue green	None	>100	6.9	2	0.6	<-0.76	<-0.80
	4	Isonare Bridge	Isanare Bridge		2015/11/6	Sunny	16.5	0.3	11.0	0.0	Light grayish yellow green	None	>100	7.0	2	0.5	<-0.76	<-0.80
					2016/2/3	Cloudy	2.0	0.3	3.3	0.0	Grayish blue green	None	>100	7.2	<1	0.3	<-0.73	<-0.99
					2015/5/31	Sunny	28.0	0.5	18.8	0.0	Grayish yellow	None	90	15.4	4	2.0	<-0.76	<-0.75
					2015/8/22	Cloudy	32.0	0.5	23.4	0.0	Grayish blue green	None	>100	14.3	3	1.6	<-0.66	<-0.66
					2015/11/7	Cloudy	15.0	0.5	13.0	0.0	Light grayish greenish yellow	None	>100	11.1	2	1.0	<-0.77	<-0.92
					2016/2/2	Sunny	8.5	0.3	6.5	0.0	Grayish blue green	None	>100	14.3	<1	1.0	<-0.72	<-0.80
5	Sakae Bridge	Sakae Bridge	2015/5/31	Sunny	25.2	0.4	21.2	0.0	Grayish yellow	None	77	14.4	7	2.7	<-0.95	<-0.74		
			2015/8/24	Cloudy	24.5	0.2	21.3	0.0	Light grayish greenish yellow	None	>100	12.8	4	1.7	<-0.80	<-0.69		
			2015/11/5	Sunny	18.8	0.3	15.7	0.0	Grayish greenish yellow	None	>100	11.7	3	1.3	<-0.73	<-0.63		
			2016/2/1	Cloudy	5.2	0.3	7.1	0.0	Grayish yellow	None	>100	12.3	<1	0.7	<-0.72	<-0.88		
			2015/5/16	Cloudy	23.4	0.8	19.9	0.0	Dark grayish yellow green	None	>100	13.9	3	2.0	<-0.77	<-0.61		
			2015/8/25	Cloudy	27.0	0.3	24.0	0.0	Dark grayish yellow green	None	>100	14.1	2	1.1	<-0.74	<-0.66		
6	Sakai Bridge	Sakai Bridge	2015/11/4	Sunny	18.3	0.2	15.6	0.0	Light grayish greenish yellow	None	>100	13.1	2	1.4	<-0.66	<-0.80		
			2016/2/4	Sunny	8.5	0.3	5.3	0.0	Dark grayish yellow green	None	>100	13.1	<1	0.7	<-0.60	<-0.80		
			2015/5/17	Sunny	18.0	0.5	20.0	0.0	Dark grayish yellow green	None	43	16.6	17	10	<-0.82	<-0.88		
			2015/8/24	Cloudy	26.0	0.3	24.9	0.0	Grayish blue green	None	64	15.7	9	4.3	<-0.80	<-0.69		
			2015/11/5	Sunny	14.5	0.4	13.2	0.0	Grayish blue green	None	>100	15.8	3	2.1	<-0.62	<-0.84		
			2016/2/2	Sunny	6.0	0.2	5.5	0.0	Grayish blue green	None	68	15.4	3	2.0	<-0.81	<-0.75		
7	Shinhananuki Bridge	Shinhananuki Bridge	2015/5/14	Sunny	29.0	1.0	22.0	0.0	Grayish blue green	None	85	17.4	7	3.4	<-0.98	<-0.80		
			2015/8/25	Cloudy	25.1	0.3	22.9	0.0	Dark grayish yellowish green	None	>100	17.4	1	1.1	<-0.70	<-0.70		
			2015/11/4	Sunny	15.0	0.2	15.8	0.0	Dark grayish yellow green	None	>100	17.1	<1	0.8	<-0.79	<-0.84		
			2016/2/4	Sunny	7.8	0.3	7.8	0.0	Dark grayish yellow green	None	>100	17.3	1	0.8	<-0.74	<-0.84		
			2015/5/16	Cloudy	21.0	1.1	21.0	0.0	Dark grayish yellow green	None	76	17.6	7	4.3	<-0.77	<-0.70		
			2015/8/12	Cloudy	31.8	1.1	28.1	0.0	Dark grayish yellow green	None	>100	18.2	2	0.9	<-0.78	<-0.80		
8	Kujigawa River	Kujigawa River	2015/11/12	Cloudy	14.8	1.5	14.3	0.0	Grayish blue green	None	>100	17.5	2	1.3	<-0.74	<-0.92		
			2016/2/15	Cloudy	1.2	0.8	10.1	0.0	Dark grayish yellow green	None	45	17.3	5	2.7	<-0.94	<-0.99		
			2015/5/16	Cloudy	21.0	1.1	21.0	0.0	Dark grayish yellow green	None	76	17.6	7	4.3	<-0.77	<-0.70		
			2015/8/12	Cloudy	31.8	1.1	28.1	0.0	Dark grayish yellow green	None	>100	18.2	2	0.9	<-0.78	<-0.80		
			2015/11/12	Cloudy	14.8	1.5	14.3	0.0	Grayish blue green	None	>100	17.5	2	1.3	<-0.74	<-0.92		
			2016/2/15	Cloudy	1.2	0.8	10.1	0.0	Dark grayish yellow green	None	45	17.3	5	2.7	<-0.94	<-0.99		
9	Nakagawa River Area	Nakagawa River	Mito City	2015/5/14	Sunny	29.0	1.0	22.0	0.0	Grayish blue green	None	85	17.4	7	3.4	<-0.98	<-0.80	
				2015/8/25	Cloudy	25.1	0.3	22.9	0.0	Dark grayish yellowish green	None	>100	17.4	1	1.1	<-0.70	<-0.70	
				2015/11/4	Sunny	15.0	0.2	15.8	0.0	Dark grayish yellow green	None	>100	17.1	<1	0.8	<-0.79	<-0.84	
				2016/2/4	Sunny	7.8	0.3	7.8	0.0	Dark grayish yellow green	None	>100	17.3	1	0.8	<-0.74	<-0.84	
				2015/5/16	Cloudy	21.0	1.1	21.0	0.0	Dark grayish yellow green	None	76	17.6	7	4.3	<-0.77	<-0.70	
				2015/8/12	Cloudy	31.8	1.1	28.1	0.0	Dark grayish yellow green	None	>100	18.2	2	0.9	<-0.78	<-0.80	
10	Nakagawa River System	Nakagawa River	Mito City	2015/11/12	Cloudy	14.8	1.5	14.3	0.0	Grayish blue green	None	>100	17.5	2	1.3	<-0.74	<-0.92	
				2016/2/15	Cloudy	1.2	0.8	10.1	0.0	Dark grayish yellow green	None	45	17.3	5	2.7	<-0.94	<-0.99	
				2015/5/16	Cloudy	21.0	1.1	21.0	0.0	Dark grayish yellow green	None	76	17.6	7	4.3	<-0.77	<-0.70	
				2015/8/12	Cloudy	31.8	1.1	28.1	0.0	Dark grayish yellow green	None	>100	18.2	2	0.9	<-0.78	<-0.80	
				2015/11/12	Cloudy	14.8	1.5	14.3	0.0	Grayish blue green	None	>100	17.5	2	1.3	<-0.74	<-0.92	
				2016/2/15	Cloudy	1.2	0.8	10.1	0.0	Dark grayish yellow green	None	45	17.3	5	2.7	<-0.94	<-0.99	

Ibaraki Rivers (Water) 2/5

No.	Location				Sampling Date	Weather	Air temperature (°C)	Water depth (m)	Water										Remarks
	Water area	Location	Municipality	Sampling Date					Weather	Air temperature (°C)	Water depth (m)	General items				Activity concentration(Bq/L)			
												Water temperature (°C)	Sampling depth (m)	Color	Odor	Transparency (cm)	Electrical conductivity (mS/m)	SS (mg/L)	
12	Nakagawa River Area	Nakagawa River	Katsuta Bridge	Mito City/Hitachinaka City	2015/5/17	Sunny	22.0	3.2	21.0	0.0	Grayish yellowish green	None	85	789	5	2.9	<-0.77	<-0.92	
					2015/8/25	Cloudy	22.3	3.5	22.7	0.0	Dark grayish yellow green	None	>100	39.9	3	1.8	<-0.68	<-0.80	
					2015/11/10	Cloudy	16.8	4.3	17.2	0.0	Grayish blue green	None	71	68.7	4	2.9	<-0.70	<-0.75	
		2016/2/17	Sunny	6.0	4.2	7.9	0.0	Dark grayish yellow green	None	77	76.1	3	2.2	<-0.57	<-0.88				
		2015/5/17	Sunny	24.5	1.4	23.8	0.0	Dark grayish yellow green	None	57	196	9	6.7	<-0.77	<-0.66				
		2015/8/27	Cloudy	22.8	1.7	22.6	0.0	Grayish blue green	None	63	594	8	3.7	<-0.73	<-0.80				
	13	Nakagawa River Area	Nakamaru River	Yanagisawa Bridge	Hitachinaka City	2015/11/10	Cloudy	17.3	1.5	18.0	0.0	Grayish blue green	None	64	90.0	7	4.5	<-0.63	<-0.75
						2016/2/9	Sunny	2.1	1.5	6.7	0.0	Grayish blue green	None	48	599	4	2.9	<-0.66	<-0.80
						2015/5/27	Sunny	23.2	0.4	19.2	0.0	Light grayish yellow green	None	61	21.3	6	3.7	<-0.81	<-0.70
						2015/8/26	Cloudy	21.6	0.2	21.5	0.0	Grayish blue green	None	76	24.0	13	4.7	<-0.65	<-0.92
						2015/11/12	Cloudy	14.0	0.2	15.8	0.0	Grayish blue green	None	>100	21.8	10	3.4	<-0.63	<-0.63
						2016/2/17	Sunny	8.0	0.2	8.6	0.0	Grayish blue green	None	>100	26.7	3	2.4	<-0.80	<-0.69
14	Nakagawa River System	Hinumamae River	Nagaoka Bridge	Ibaraki Town	2015/5/27	Sunny	21.0	0.3	20.5	0.0	Light grayish yellow green	None	65	25.3	8	3.2	<-0.65	<-0.66	
					2015/8/27	Cloudy	26.2	0.2	22.5	0.0	Grayish yellow	None	90	19.6	8	3.0	<-0.70	<-0.69	
					2015/11/12	Cloudy	14.5	0.2	14.4	0.0	Grayish blue green	None	>100	21.5	5	1.6	<-0.72	<-0.88	
		2016/2/17	Sunny	11.0	0.3	7.4	0.0	Light grayish yellow green	None	>100	23.0	5	1.9	<-0.67	<-0.88				
		2015/5/27	Sunny	21.7	0.4	19.2	0.0	Grayish blue green	None	55	25.9	8	3.6	<-0.82	<-0.75				
		2015/8/11	Sunny	31.2	1.2	26.6	0.0	Dark grayish greenish yellow	None	90	26.8	9	2.8	<-0.67	<-0.63				
	15	Hinumagawa River Area	Hinuma River	Takahashi	Ibaraki Town	2015/11/12	Sunny	15.0	0.2	15.9	0.0	Grayish blue green	None	>100	26.3	5	1.8	<-0.57	<-0.84
						2016/2/9	Sunny	12.3	0.2	11.1	0.0	Grayish blue green	None	>100	28.0	4	1.6	<-0.76	<-0.84
						2015/5/15	Sunny	23.5	1.0	20.9	0.0	Dark grayish yellow green	None	69	35.3	6	4.9	<-0.84	<-0.66
			2015/8/11	Cloudy	28.9	1.1	22.0	0.0	Dark grayish greenish yellow	None	98	37.1	4	2.0	<-0.91	<-0.84			
			2015/11/10	Cloudy	17.8	0.5	16.1	0.0	Grayish yellow	None	65	35.0	19	5.7	<-0.70	<-0.63			
			2016/2/9	Sunny	10.6	0.3	9.9	0.0	Grayish greenish yellow	None	85	49.1	5	2.5	<-0.85	<-0.88			
16	Hinumagawa River Area	Kansei River	Kansei Bridge	Hokota City	2015/5/17	Sunny	19.0	0.8	21.0	0.0	Dark grayish yellowish green	None	33	1,750	25	19	<-0.66	<-0.69	
					2015/8/26	Cloudy	24.0	1.3	23.5	0.0	Dark grayish yellow	None	22	11.3	29	15	<-0.66	<-0.69	
					2015/11/10	Cloudy	18.0	0.9	17.1	0.0	Grayish blue green	None	33	16.0	9	4.0	<-0.63	<-0.80	
		2016/2/8	Sunny	5.8	0.8	8.7	0.0	Grayish blue green	None	82	378	1	0.8	<-0.79	<-0.96				
		2015/5/27	Sunny	24.1	1.1	21.1	0.0	Grayish blue green	None	35	36.6	9	4.3	<-0.74	<-0.70				
		2015/8/27	Cloudy	25.1	1.2	20.7	0.0	Dark grayish yellow	None	68	38.2	7	3.7	<-0.74	<-0.80				
17	Hinumagawa River Area	Daiya River	Oya Bridge	Hokota City	2015/11/6	Sunny	21.3	1.0	17.3	0.0	Grayish greenish yellow	None	87	38.4	9	3.7	<-0.74	<-0.75	
					2016/2/17	Sunny	10.0	1.0	10.1	0.0	Grayish blue green	None	56	50.7	6	3.5	<-0.75	<-0.80	
					2015/5/27	Sunny	22.7	1.0	23.1	0.0	Dark grayish yellow green	None	45	28.0	9	3.3	<-0.82	<-0.69	
		2015/8/27	Cloudy	25.5	1.0	21.8	0.0	Dark grayish greenish yellow	None	88	26.8	7	3.5	<-0.74	<-0.92				
		2015/11/6	Sunny	21.2	0.6	17.0	0.0	Dark grayish yellow	None	96	29.9	4	2.7	<-0.76	<-0.69				
		2016/2/17	Sunny	12.5	0.3	10.6	0.0	Grayish blue green	None	>100	31.3	4	2.0	<-0.87	<-0.84				
19	Tonogawa River System	Hokota River	Asahi Bridge	Hokota City	2015/5/26	Sunny	30.1	0.3	20.9	0.0	Dark grayish greenish yellow	None	72	26.1	8	4.7	<-0.74	<-0.66	
					2015/8/27	Cloudy	22.0	0.3	20.2	0.0	Dark grayish yellow	None	74	26.1	15	5.3	<-0.74	<-0.69	
					2015/11/6	Sunny	16.0	0.2	14.8	0.0	Grayish yellow	None	>100	26.8	6	2.9	<-0.69	<-0.69	
		2016/2/17	Sunny	9.5	0.2	11.3	0.0	Grayish yellow	None	26	28.4	24	20	<-0.65	<-0.75				
		2015/5/26	Sunny	22.7	0.1	22.7	0.0	Grayish greenish yellow	None	73	28.1	8	3.9	<-0.85	<-0.84				
		2015/8/27	Cloudy	24.0	0.3	21.7	0.0	Dark grayish yellow	None	43	27.8	12	4.6	<-0.51	<-0.75				
	20	Tonogawa River System	Tomoe River	Shintomoegawa Bridge	Hokota City	2015/11/6	Sunny	15.9	0.2	14.3	0.0	Grayish yellow	None	98	28.8	7	3.2	<-0.73	<-0.84
						2016/2/18	Cloudy	7.3	0.2	8.5	0.0	Light grayish yellow	None	>100	31.4	2	1.2	<-0.87	<-0.96
						2015/5/26	Sunny	27.3	0.2	20.3	0.0	Dark grayish yellow	None	27	29.3	21	9.4	<-0.72	<-0.84
			2015/8/27	Cloudy	25.0	0.3	22.4	0.0	Dark grayish reddish yellow	None	38	28.6	32	11	<-0.61	<-0.66			
			2015/11/20	Cloudy	13.3	0.3	14.5	0.0	Light grayish greenish yellow	None	18	26.9	33	23	<-0.76	<-0.84			
			2016/2/18	Sunny	4.0	0.3	7.7	0.0	Grayish yellow	None	48	31.2	10	6.0	<-0.76	<-0.92			
21	Tonogawa River System	Yamada River	Nioroshi Bridge	Namegata City	2015/5/26	Sunny	28.6	0.4	27.1	0.0	Grayish yellow	None	32	28.9	18	6.9	<-0.75	<-0.70	
					2015/8/28	Cloudy	21.1	1.2	20.2	0.0	Dark grayish greenish yellow	None	50	28.0	12	6.6	<-0.76	<-0.55	
					2015/11/21	Sunny	11.8	0.8	13.5	0.0	Grayish greenish yellow	None	60	26.1	11	5.9	<-0.67	<-0.69	
		2016/2/19	Sunny	8.5	0.4	6.2	0.0	Grayish blue green	None	47	28.9	14	8.1	<-0.65	<-0.80				
		2015/6/3	Cloudy	21.6	0.1	19.6	0.0	Dark grayish greenish yellow	None	60	31.3	15	6.1	<-0.68	<-0.69				
		2015/8/28	Rain	21.2	0.1	20.2	0.0	Dark grayish reddish yellow	None	78	29.6	8	5.6	<-0.69	<-0.75				
22	Tonogawa River System	Kurakawa River	Kurakawa Bridge	Namegata City	2015/11/21	Sunny	14.5	0.2	14.4	0.0	Grayish greenish yellow	None	79	26.1	7	5.7	<-0.84	<-0.80	
					2016/2/19	Sunny	6.5	0.2	7.7	0.0	Light grayish yellow	None	48	30.7	5	4.0	<-0.94	<-0.84	
					2015/5/17	Sunny	22.0	3.2	21.0	0.0	Grayish yellowish green	None	85	789	5	2.9	<-0.77	<-0.92	
23	Tonogawa River System	Gantsu River	JA Yokohashi Bridge	Namegata City	2015/8/25	Cloudy	22.3	3.5	22.7	0.0	Dark grayish yellow green	None	>100	39.9	3	1.8	<-0.68	<-0.80	
					2015/11/10	Cloudy	16.8	4.3	17.2	0.0	Grayish blue green	None	71	68.7	4	2.9	<-0.70	<-0.75	
					2016/2/17	Sunny	6.0	4.2	7.9	0.0	Dark grayish yellow green	None	77	76.1	3	2.2	<-0.57	<-0.88	
24	Tonogawa River System	Gantsu River	JA Yokohashi Bridge	Namegata City	2015/5/17	Sunny	24.5	1.4	23.8	0.0	Dark grayish yellow green	None	57	196	9	6.7	<-0.77	<-0.66	
					2015/8/27	Cloudy	22.8	1.7	22.6	0.0	Grayish blue green	None	63	594	8	3.7	<-0.73	<-0.80	
					2015/11/10	Cloudy	17.3	1.5	18.0	0.0	Grayish blue green	None	64	90.0	7	4.5	<-0.63	<-0.75	
25	Tonogawa River System	Gantsu River	JA Yokohashi Bridge	Namegata City	2016/2/9	Sunny	2.1	1.5	6.7	0.0	Grayish blue green	None	48	599	4	2.9	<-0.66	<-0.80	
					2015/5/27	Sunny	23.2	0.4	19.2	0.0	Light grayish yellow green	None	61	21.3	6	3.7	<-0.81	<-0.70	
					2015/8/26	Cloudy	21.6	0.2	21.5	0.0	Grayish blue green	None	76	24.0	13	4.7	<-0.65	<-0.92	

Ibaraki Rivers (Water) 3/5

Location					Sampling Date	Weather	Air temperature (°C)	Water depth (m)	Water								Remarks			
No.	Water area		Location	Municipality					Water temperature (°C)	Sampling depth (m)	General items				Activity concentration(Bq/L)					
											Color	Odor	Transparency (cm)	Electrical conductivity (mS/m)	SS (mg/L)	Turbidity (FNU)		Radioactive cesium		
Rivers	26	Kitaura River Area	Nagare River	Suhoi Bridge	Kashima City	2015/5/21	Sunny	28.6	0.1	24.4	0.0	Dark grayish yellow	Faint sewage	63	32.0	4	3.7	<-0.87	<-0.61	
						2015/8/28	Cloudy	21.0	0.1	20.6	0.0	Grayish yellow	Faint sewage	>100	39.7	3	1.7	<-0.61	<-0.69	
						2015/11/6	Sunny	16.8	0.1	17.7	0.0	Dark grayish yellow	None	>100	40.6	2	2.4	<-0.62	<-0.88	
						2016/2/18	Sunny	9.0	0.2	10.5	0.0	Grayish yellow	Faint sewage	>100	40.5	6	4.3	<-0.79	<-0.92	
	27		Sonobe River	Sonobeshin Bridge	Omitama City	2015/5/25	Cloudy	23.5	1.6	20.7	0.0	Dark grayish yellow green	None	18	26.1	22	14	<-0.81	<-0.74	
						2015/8/24	Cloudy	27.2	1.4	24.5	0.0	Grayish blue green	None	52	26.3	11	7.4	<-0.65	<-0.75	
						2015/11/5	Sunny	20.0	1.8	15.9	0.0	Grayish blue green	None	86	28.1	3	3.9	<-0.84	<-0.69	
						2016/2/24	Cloudy	5.2	1.7	8.5	0.0	Grayish blue green	None	93	28.4	5	3.9	<-0.66	<-0.96	
	28		Sanno River	Tokoro Bridge	Omitama City	2015/5/25	Cloudy	21.6	0.5	21.8	0.0	Dark grayish yellow green	None	55	56.5	7	2.3	<-0.86	<-0.66	
						2015/8/24	Cloudy	26.8	0.3	24.1	0.0	Grayish blue green	None	>100	67.1	3	1.6	<-0.66	<-0.55	
						2015/11/5	Sunny	17.4	0.5	15.6	0.0	Grayish blue green	None	>100	54.2	3	1.6	<-0.76	<-0.80	
						2016/2/24	Cloudy	6.0	0.6	10.0	0.0	Dark grayish yellow green	None	>100	64.9	2	1.6	<-0.51	<-0.88	
	29		Koise River	Heiwa Bridge	Ishioka City	2015/5/25	Sunny	19.5	0.5	21.8	0.0	Grayish reddish yellow	None	30	22.7	14	7.6	<-0.85	<-0.80	
						2015/8/14	Cloudy	28.0	0.4	23.9	0.0	Grayish blue green	None	50	25.4	14	7.0	<-0.87	<-0.48	
						2015/11/5	Sunny	11.9	0.4	13.4	0.0	Grayish yellow	None	61	20.8	13	6.4	<-0.77	<-0.92	
						2016/2/24	Cloudy	4.8	0.3	8.1	0.0	Grayish yellow	None	96	19.2	5	3.4	<-0.65	<-0.99	
	30		Kajinashi River	Kamishuku Bridge	Namegata City	2015/5/25	Cloudy	17.2	0.6	20.4	0.0	Dark grayish greenish yellow	None	27	30.4	18	8.6	<-0.86	<-0.47	
						2015/8/14	Cloudy	25.0	0.4	23.1	0.0	Light grayish yellow green	None	72	29.8	9	4.3	<-0.76	<-0.80	
						2015/11/5	Sunny	20.6	0.5	17.4	0.0	Grayish greenish yellow	None	>100	34.9	3	2.0	<-0.65	<-0.80	
						2016/2/18	Sunny	10.2	0.4	8.8	0.0	Grayish yellow	None	>100	38.9	2	2.1	<-0.74	<-0.63	
	31		Hishiki River	Hishiki Bridge	Kasumigaura City	2015/5/24	Cloudy	24.8	0.3	24.3	0.0	Dark grayish greenish yellow	None	46	25.8	10	5.2	<-0.76	<-0.61	
						2015/8/14	Cloudy	24.1	0.5	23.8	0.0	Grayish blue green	None	56	25.9	15	4.5	<-0.42	<-0.66	
						2015/11/5	Sunny	18.6	0.4	17.2	0.0	Dark grayish greenish yellow	None	55	28.0	5	2.5	<-0.60	<-0.84	
						2016/2/18	Cloudy	10.3	0.4	8.9	0.0	Light grayish yellow	None	>100	31.3	1	1.5	<-0.70	<-0.99	
	32	Tonogawa River System	Kasumigaura River Area	Ichinose River	Kawanaka Bridge	Kasumigaura City	2015/5/26	Sunny	24.2	1.0	19.3	0.0	Dark grayish greenish yellow	None	32	26.5	15	8.3	<-0.91	<-0.80
							2015/8/28	Cloudy	23.0	1.3	20.7	0.0	Grayish yellow	None	31	30.4	28	14	<-0.61	<-0.88
							2015/11/6	Sunny	11.0	1.3	12.5	0.0	Grayish greenish yellow	None	33	26.7	19	11	<-0.61	<-0.75
							2016/2/18	Sunny	8.5	0.7	9.2	0.0	Light grayish yellow	None	10	30.3	65	58	<-0.90	<-0.80
	33		Sakai River	Sakai Bridge/ National Route 354	Tsuchiura City	2015/5/24	Sunny	29.8	0.4	23.9	0.0	Dark grayish yellow green	None	46	35.5	20	8.0	<-0.87	<-0.66	
						2015/8/13	Cloudy	29.0	0.3	27.6	0.0	Grayish blue green	None	45	43.8	6	5.3	<-0.68	<-0.63	
						2015/11/4	Sunny	19.0	0.3	18.8	0.0	Grayish yellow	None	23	42.0	14	14	<-0.68	<-0.80	
						2016/2/24	Cloudy	6.5	0.5	11.0	0.0	Grayish blue green	None	50	45.1	6	4.4	<-0.74	<-0.92	
	34		Shinkawa River	Shinten Bridge	Tsuchiura City	2015/5/25	Sunny	24.3	1.1	21.9	0.0	Grayish yellow	None	18	28.2	28	25	<-0.85	<-0.80	
						2015/8/13	Cloudy	29.8	2.1	28.0	0.0	Grayish blue green	None	20	24.1	13	8.3	<-0.87	<-0.70	
						2015/11/4	Sunny	16.5	1.9	17.2	0.0	Dark grayish greenish yellow	None	31	27.3	15	11	<-0.65	<-0.92	
						2016/2/23	Cloudy	9.2	2.1	10.0	0.0	Grayish yellow	None	36	26.9	13	13	<-0.60	<-0.99	
	35		Sakura River	Eiri Bridge	Tsuchiura City/ Tsukuba City	2015/5/24	Cloudy	24.2	0.6	22.6	0.0	Dark grayish yellow green	None	21	22.6	27	13	<-0.85	<-0.88	
						2015/8/13	Cloudy	26.0	0.6	26.8	0.0	Grayish greenish yellow	None	32	22.6	14	5.7	<-0.92	<-0.84	
						2015/11/4	Sunny	16.5	0.6	15.0	0.0	Dark grayish yellow	None	41	21.8	13	7.5	<-0.58	<-0.84	
						2016/2/24	Cloudy	5.2	0.5	8.4	0.0	Grayish blue green	None	82	23.9	8	5.2	<-0.83	<-0.92	
	36		Bizen River	Bizengawa Bridge	Tsuchiura City	2015/5/24	Cloudy	21.3	0.7	20.9	0.0	Dark grayish yellow green	None	25	30.8	30	14	<-0.89	<-0.61	
						2015/8/13	Cloudy	29.0	0.7	27.6	0.0	Dark grayish yellow green	None	31	21.0	8	2.4	<-0.74	<-0.69	
						2015/11/4	Sunny	18.6	0.6	17.4	0.0	Grayish blue green	None	39	23.8	11	6.9	<-0.85	<-0.80	
						2016/2/23	Cloudy	9.8	0.8	10.0	0.0	Grayish blue green	None	51	18.0	6	8.0	<-0.51	<-0.80	
	37		Hanamuro River	Shinwa Bridge	Tsuchiura City	2015/5/23	Cloudy	27.7	0.4	23.2	0.0	Dark grayish yellow green	None	40	26.1	14	7.4	<-0.68	<-0.92	
						2015/8/13	Cloudy	32.9	0.4	27.2	0.0	Grayish blue green	None	29	27.4	32	11	<-0.54	<-0.70	
						2015/11/4	Sunny	15.0	0.3	15.8	0.0	Grayish greenish yellow	None	61	24.4	7	4.0	<-0.66	<-0.63	
						2016/2/23	Cloudy	10.2	0.2	10.8	0.0	Dark grayish yellow green	None	47	27.2	6	4.7	<-0.83	<-0.92	
38		Seimei River	Katsuhashi Bridge	Ami Town	2015/5/23	Sunny	28.6	0.6	22.3	0.0	Dark grayish yellow green	None	42	28.5	11	6.2	<-0.69	<-0.96		
					2015/8/13	Cloudy	30.0	0.5	28.3	0.0	Grayish blue green	None	35	32.4	13	5.6	<-0.65	<-0.75		
					2015/11/27	Sunny	13.0	0.5	13.1	0.0	Grayish yellow	None	55	25.1	10	5.1	<-0.65	<-0.69		
					2016/2/16	Sunny	7.9	0.5	12.0	0.0	Grayish yellow	None	42	30.4	11	8.1	<-0.72	<-0.75		

Ibaraki Rivers (Water) 4/5

No.	Location				Sampling Date	Weather	Air temperature (°C)	Water depth (m)	Water										Remarks
	Water area	Location	Municipality	General items					Water temperature (°C)	Sampling depth (m)	Color	Odor	Transparency (cm)	Electrical conductivity (mS/m)	SS (mg/L)	Turbidity (FNU)	Activity concentration(Bq/L)		
																	Radioactive cesium		
												Cs-134	Cs-137						
39	Kasumigaura River Area	Onogawa River	Okuhara-ohashi Bridge	Ryugasaki City/ Ushiku City	2015/5/23	Sunny	25.7	0.4	20.8	0.0	Dark grayish greenish yellow	None	28	30.5	21	13	<-0.65	<-0.55	
					2015/8/12	Cloudy	28.5	0.4	28.8	0.0	Grayish blue green	None	31	40.9	15	8.0	<-0.81	<-0.66	
2015/11/28		Sunny	16.5	0.3	11.7	0.0	Grayish blue green	None	74	29.8	6	3.5	<-0.48	<-0.84					
2016/2/11		Sunny	10.2	0.3	8.6	0.0	Grayish yellowish green	None	55	46.4	3	2.4	<-0.74	<-0.84					
40	Shintone River	Shintone Bridge	Inashiki City	2015/6/5	Cloudy	20.2	1.2	23.3	0.0	Dark grayish yellow	None	28	37.8	12	9.6	<-0.86	<-0.88		
				2015/8/28	Cloudy	21.0	1.5	22.5	0.0	Dark grayish greenish yellow	None	26	30.2	17	12	<-0.80	<-0.69		
2015/11/21		Cloudy	15.5	1.2	16.0	0.0	Dark grayish greenish yellow	None	73	44.0	5	5.4	<-0.70	<-0.69					
2015/6/5		Sunny	8.8	1.3	6.2	0.0	Dark grayish yellow	None	28	53.4	10	12	<-0.71	<-0.80					
41	Hitachitonegawa River Area	Yorokoshi River	Horinouchi Bridge	Itako City	2015/6/5	Cloudy	24.0	0.8	19.3	0.0	Grayish yellow	None	35	38.3	23	12	<-0.68	<-0.75	
					2015/8/28	Rain	22.0	0.6	21.3	0.0	Dark grayish yellow green	None	62	34.7	12	6.3	<-0.70	<-0.63	
2015/11/21		Sunny	12.8		0.6	14.5	0.0	Grayish blue green	None	87	30.0	9	6.0	<-0.91	<-0.84				
2016/2/11		Sunny	6.5		0.7	7.1	0.0	Grayish yellow	None	18	35.5	32	37	<-0.74	<-0.92				
42	Mackawa River	Ayame Bridge	Itako City	2015/5/29	Cloudy	22.5	2.5	22.4	0.0	Dark grayish yellow green	None	17	46.1	9	7.5	<-0.74	<-0.70		
				2015/8/29	Cloudy	22.2	2.6	21.6	0.0	Grayish blue green	None	57	26.0	9	5.5	<-0.78	<-0.69		
2015/11/13		Cloudy		15.5	2.3	15.8	0.0	Dark grayish yellow green	None	84	35.6	7	5.8	<-0.61	<-0.84				
2016/2/16		Sunny		7.8	2.6	10.1	0.0	Grayish greenish yellow	None	25	42.2	27	17	<-0.83	<-0.75				
43	Kinugawa River Area	Kawashima Bridge	Chikusei City	2015/5/28	Sunny	23.5	0.4	20.9	0.0	Light grayish yellow green	None	>100	19.3	3	1.2	<-0.91	<-0.75		
				2015/8/10	Sunny	28.8	0.3	28.1	0.0	Dark grayish yellowish green	None	>100	22.2	5	1.5	<-0.70	<-0.80		
2015/11/24		Sunny	17.3	0.3	14.7	0.0	Light grayish yellow green	None	>100	16.8	2	1.1	<-0.61	<-0.75					
2016/2/22		Cloudy	9.2	0.4	9.7	0.0	Dark grayish yellow green	None	>100	17.2	3	1.7	<-0.72	<-0.69					
44	Tagawa River	Takishita Bridge	Moriya City	2015/5/22	Sunny	24.5	0.4	21.4	0.0	Grayish blue green	None	17	19.7	36	12	<-0.68	<-0.75		
				2015/8/11	Cloudy	29.0	0.3	28.6	0.0	Grayish blue green	None	65	25.2	7	3.8	<-0.72	<-0.96		
2015/11/27		Sunny	8.8	0.2	11.0	0.0	Grayish blue green	None	66	23.0	8	3.8	<-0.61	<-0.80					
2016/2/23		Cloudy	5.0	0.7	9.8	0.0	Grayish blue green	None	90	22.1	5	2.8	<-0.72	<-0.88					
45	Tagawa River	Tagawa Bridge	Chikusei City	2015/5/28	Cloudy	21.9	0.4	20.2	0.0	Yellow greenish pale gray	None	>100	25.7	4	0.7	<-0.74	<-0.61		
				2015/8/10	Sunny	31.5	0.3	27.0	0.0	Yellow greenish pale gray	None	>100	25.2	4	1.3	<-0.84	<-0.69		
2015/11/24		Cloudy		16.2	0.3	15.5	0.0	Light grayish yellow green	Faint mold	>100	25.8	3	1.0	<-0.76	<-0.80				
2016/2/22		Sunny		11.0	0.4	10.8	0.0	Grayish blue green	Faint sewage	>100	25.3	4	2.4	<-0.66	<-0.88				
46	Kokai River	Kuroko Bridge	Chikusei City	2015/5/28	Sunny	27.0	0.4	23.3	0.0	Grayish greenish yellow	None	88	21.7	7	3.4	<-0.73	<-0.75		
				2015/8/11	Sunny	29.2	0.6	28.2	0.0	Grayish yellow	None	53	22.7	21	8.5	<-0.76	<-0.84		
2015/11/24		Sunny		16.5	0.2	15.7	0.0	Light grayish greenish yellow	None	72	24.8	6	4.2	<-0.58	<-0.63				
2016/2/22		Cloudy		8.8	0.3	10.3	0.0	Grayish greenish yellow	None	59	24.8	26	9.2	<-0.72	<-0.88				
47	Fumimaki Bridge	Toride City	2015/5/23	Sunny	25.2	2.9	20.7	0.0	Dark grayish yellow green	None	28	19.6	19	10	<-0.92	<-0.70			
			2015/8/12	Sunny	35.0	0.5	30.9	0.0	Grayish greenish yellow	None	86	20.7	12	3.7	<-0.71	<-0.75			
2015/11/28			Sunny	13.3	2.5	10.6	0.0	Grayish blue green	None	66	21.2	14	6.7	<-0.78	<-0.80				
2016/2/11			Sunny	9.0	1.3	7.1	0.0	Grayish blue green	None	87	25.3	5	3.3	<-0.82	<-0.99				
48	Yatagawa River	Maruyama Bridge	Tsukuba City	2015/5/22	Sunny	25.1	2.3	19.9	0.0	Dark grayish greenish yellow	None	30	22.0	16	9.4	<-0.70	<-0.80		
				2015/8/11	Cloudy	34.0	1.7	29.3	0.0	Grayish blue green	None	60	25.6	5	3.2	<-0.81	<-0.70		
2015/11/27				Sunny	12.1	1.3	12.1	0.0	Grayish greenish yellow	None	>100	25.0	6	3.7	<-0.73	<-0.75			
2016/2/23				Cloudy	9.0	1.4	9.9	0.0	Grayish blue green	None	>100	27.0	5	3.6	<-0.68	<-0.84			
49	Nishiyata River	Sakaimatsu Bridge	2015/5/22	Cloudy	23.5	1.3	20.6	0.0	Grayish yellow	None	22	18.3	22	14	<-0.84	<-0.55			
			2015/8/11	Cloudy	34.0	1.3	30.6	0.0	Grayish blue green	None	58	23.0	6	3.2	<-0.74	<-0.55			
2015/11/27			Sunny	10.3	0.2	12.1	0.0	Light grayish yellow	None	29	22.1	14	11	<-0.82	<-0.80				
2016/2/23			Cloudy	7.8	0.4	10.4	0.0	Light grayish yellow	None	27	26.0	9	6.6	<-0.60	<-0.80				
50	Inari River	Oguki Bridge	2015/5/23	Cloudy	25.5	1.0	20.3	0.0	Dark grayish yellowish green	None	62	21.6	5	3.7	<-0.85	<-0.80			
			2015/8/11	Cloudy	34.0	0.8	28.6	0.0	Grayish blue green	None	>100	22.6	2	1.7	<-0.84	<-0.66			
2015/11/27			Sunny	15.2	0.6	12.9	0.0	Grayish blue green	None	>100	23.3	3	2.3	<-0.74	<-0.84				
2016/2/23			Cloudy	8.0	0.8	9.8	0.0	Grayish greenish yellow	None	>100	20.9	4	2.7	<-0.73	<-0.88				

Ibaraki Rivers (Water) 5/5

	Location				Sampling Date	Weather	Air temperature (°C)	Water depth (m)	Water										Remarks	
	No.	Water area		Location					Municipality	General items							Activity concentration(Bq/L)			
										Water temperature (°C)	Sampling depth (m)	Color	Odor	Transparency (cm)	Electrical conductivity (mS/m)	SS (mg/L)	Turbidity (FNU)	Radioactive cesium		
		Cs-134	Cs-137																	
Rivers	51	Tonegawa River System	Tonegawa River Area	Tonegawa River	Kurihashi Bridge	Koga City	2015/5/28	Sunny	27.0	0.6	21.5	0.0	Grayish yellow	None	70	12.3	13	5.0	<0.57	<0.66
							2015/8/10	Cloudy	29.1	0.5	27.6	0.0	Light grayish yellow green	None	52	20.7	12	2.9	<0.78	<0.75
							2015/11/24	Cloudy	16.3	0.2	12.9	0.0	Grayish blue green	None	41	25.7	13	8.7	<0.75	<0.80
							2016/2/22	Cloudy	7.8	0.1	7.1	0.0	Grayish blue green	None	>100	27.2	11	6.6	<0.62	<0.69
	52	Tonegawa River System	Tonegawa River Area	Tonegawa River	Fukawa	Tone Town	2015/5/22	Sunny	28.5	0.6	21.6	0.0	Grayish blue green	None	72	13.4	6	3.6	<0.77	<0.55
							2015/8/12	Sunny	34.0	0.5	30.9	0.0	Grayish blue green	None	45	24.0	8	3.9	<0.87	<0.66
							2015/11/21	Cloudy	16.0	0.1	15.4	0.0	Grayish blue green	None	66	22.0	5	2.9	<0.79	<0.75
							2016/2/11	Sunny	7.0	0.2	6.3	0.0	Grayish blue green	None	36	28.6	7	4.4	<0.70	<0.75
	53	Tonegawa River System	Tonegawa River Area	Tonegawa River	Sawara	Inashiki City	2015/5/29	Cloudy	22.2	0.5	22.3	0.0	Dark grayish yellow green	None	35	26.3	18	6.0	<0.81	<0.80
							2015/8/28	Cloudy	23.2	0.2	22.7	0.0	Grayish greenish yellow	None	38	26.9	19	10	<0.75	<0.88
							2015/11/13	Cloudy	16.5	0.3	16.1	0.0	Grayish blue green	None	27	30.2	25	16	<0.75	<0.75
							2016/2/19	Sunny	14.5	0.2	13.3	0.0	Grayish greenish yellow	None	14	35.1	13	8.9	<0.75	<0.75

Ibaraki Rivers (Sediment) 1/5

No.	Location			Sampling Date	Weather	Air temperature (C)	Water depth (m)	Sediment																Remarks		
	Water area	Location	Municipality					Sediment temperature (C)	Sample length (cm)	Color	Odor	Grain size distribution(%)						Sediment content (%)	Density (g/cm ³)	Property	Activity concentration [Bq/kg(dry)]					
												Coarse gravel	Medium gravel	Fine gravel	Coarse sand	Medium sand	Fine sand				Silt	Clay	Cs-134		Cs-137	Total
R i v e r s	Tagagawa River System	Satone River	Yamagaya Bridge	Kitaibaraki City	2015/5/30	Cloudy	22.6	0.3	15.3	5	Blackish brown	None	0.0	13.0	23.6	22.3	15.6	6.9	16.2	2.4	83.7	2.890	Gravel/sand	30	130	160
					2015/8/22	Cloudy	26.2	0.2	19.1	4	Blackish brown	None	4.5	15.5	17.1	39.8	19.0	2.7	0.9	0.5	78.4	2.832	Sand/gravel/silt	7.3	36	43.3
					2015/1/7	Cloudy	13.8	0.2	12.3	4	Blackish brown	None	0.0	0.0	1.7	25.7	48.9	13.8	5.1	4.7	75.9	2.876	Sand/silt	14	53	67
					2016/2/2	Sunny	-1.5	0.2	4.5	10	Blackish brown	None	0.0	0.0	1.3	11.0	64.0	18.1	4.6	3.0	72.9	2.821	Sand/gravel	14	69	83
					2015/8/30	Sunny	24.5	0.2	22.0	5	Dark brown	None	0.0	0.0	1.9	24.2	61.0	6.4	2.6	3.8	76.5	2.743	Gravel/sand	18	78	96
		Murayama Bridge	2015/8/22	Cloudy	27.0	0.2	23.1	4	Dark brown	None	0.0	0.3	5.2	34.5	52.8	3.9	2.7	0.7	74.9	2.684	Sand/gravel/silt	16	72	88		
			2015/1/7	Cloudy	16.3	0.3	13.5	3	Blackish brown	None	0.0	7.8	8.7	30.2	46.4	6.4	2.1	4.4	74.9	2.728	Sand/gravel	15	72	87		
			2016/2/2	Sunny	4.5	0.3	4.8	2	Dark brown	None	0.0	6.6	25.2	44.9	19.1	0.9	1.4	2.0	76.0	2.735	Sand/gravel	7.1	43	50.1		
			2015/5/30	Sunny	23.4	0.5	14.5	5	Brown	None	0.0	0.0	5.9	49.3	35.6	5.2	1.3	2.8	78.9	2.677	Gravel/sand	11	34	45		
			2015/8/21	Cloudy	24.0	0.4	19.0	3	Dim yellowish brown	None	0.0	9.8	18.9	46.0	23.7	0.9	0.2	0.6	76.1	2.684	Sand/gravel	10	42	52		
		Hanazono River	Isonare Bridge	Kitaibaraki City	2015/1/6	Sunny	17.2	0.3	12.0	4	Grayish yellowish brown	None	0.0	0.2	16.3	28.9	33.9	7.2	2.8	75.8	2.732	Sand/gravel	8.5	44	52.5	
					2016/2/25	Sunny	5.0	0.4	4.2	2	Brown	None	0.0	6.8	16.7	33.2	35.9	3.1	1.5	3.0	75.5	2.657	Sand/gravel	9.2	41	50.2
					2015/5/31	Sunny	25.6	0.4	19.0	5	Dim yellowish brown	None	7.7	26.5	8.9	9.6	24.1	16.2	3.5	3.4	83.2	2.661	Sand/gravel	6.7	20	26.7
					2015/8/22	Sunny	28.2	0.4	25.5	2	Brown	None	13.0	50.8	13.0	15.0	7.9	0.1	0.0	0.2	78.1	2.672	Sand/gravel	<6.8	12	12
					2015/1/7	Cloudy	18.0	0.3	15.2	4	Dim yellowish brown	None	6.5	47.7	13.4	10.6	18.5	1.3	0.3	1.7	79.4	2.675	Gravel/sand	8.8	34	42.8
	Okita River	Sakae Bridge	Takahagi City	2015/5/30	Sunny	22.4	0.3	13.7	5	Brown	None	0.0	3.0	13.6	11.7	41.5	24.3	3.7	2.4	72.4	2.770	Sand/gravel	11	56	67	
				2015/8/22	Cloudy	28.5	0.3	20.2	5	Brown	None	13.8	30.3	11.1	21.8	20.2	2.2	0.3	0.3	79.9	2.821	Sand/gravel/silt	<4.3	7.1	7.1	
				2015/1/6	Sunny	16.5	0.3	11.5	3	Brown	None	6.6	36.1	14.7	13.7	19.8	6.3	1.0	1.8	78.8	2.828	Sand/gravel	<3.4	9.8	9.8	
				2016/2/3	Cloudy	2.0	0.3	3.8	5	Brown	None	0.0	12.1	31.9	22.6	20.6	9.1	0.5	3.2	80.2	2.784	Sand/gravel	5.6	19	24.6	
				2015/5/31	Sunny	28.0	0.5	18.4	5	Brown	None	0.0	5.5	9.9	35.2	43.3	3.4	0.8	1.6	77.8	2.682	Sand/gravel	16	65	81	
		Sakai Bridge	Kitaibaraki City	2015/8/22	Cloudy	32.0	0.5	24.0	3	Brown	None	2.3	47.1	24.7	7.5	16.7	1.3	0.1	0.2	82.7	2.672	Sand/gravel	7.9	34	41.9	
				2015/1/7	Cloudy	15.0	0.5	13.1	4	Brown	None	4.2	17.6	21.6	20.8	27.7	4.8	0.6	2.7	76.5	2.713	Sand/gravel	9.3	49	58.3	
				2016/2/2	Sunny	8.5	0.3	6.8	5	Brown	None	0.0	21.3	20.2	21.3	32.2	2.7	0.6	1.7	77.3	2.714	Sand/gravel	10	42	52	
				2015/5/31	Sunny	25.2	0.4	20.9	5	Dim yellowish brown	None	0.0	2.3	2.4	16.0	64.7	8.9	2.0	3.8	74.9	2.651	Sand/gravel	21	80	101	
				2015/8/24	Cloudy	24.5	0.2	21.8	2	Dim yellowish brown	Faint fish	0.0	0.5	1.6	3.4	60.2	30.8	2.7	0.8	76.3	2.622	Sand/gravel	21	65	86	
		Hanamaki River	Shinbanamaki Bridge	Takahagi City	2015/1/5	Sunny	18.8	0.3	16.0	4	Dim yellowish brown	None	0.0	0.7	4.4	16.6	65.3	7.5	1.0	4.6	74.6	2.677	Sand	14	74	88
					2016/2/1	Cloudy	5.2	0.3	6.5	10	Brown	None	0.0	5.6	4.2	16.2	64.3	6.2	0.6	3.0	73.5	2.696	Sand/gravel	11	64	75
					2015/5/16	Cloudy	23.4	0.8	20.3	5	Blackish brown	Faint sewage	0.0	26.2	8.9	9.1	29.7	13.8	5.7	6.5	78.4	2.611	Sand/silt/gravel	5.0	20	25
					2015/8/25	Cloudy	27.0	0.3	24.5	3	Dark brown	Faint grass	7.4	27.4	21.0	22.5	18.4	2.3	0.5	0.4	82.2	2.637	Sand/silt/gravel	<4.5	15	15
					2015/1/4	Sunny	18.3	0.2	16.0	3	Blackish brown	Faint fish	0.0	5.1	5.0	9.3	50.3	21.0	5.4	3.9	77.7	2.683	Sand/gravel	4.6	18	22.6
Kujigawa River System	Kujigawa River	Yamagata	Hiachiomiya City	2016/2/4	Sunny	8.5	0.3	5.8	5	Blackish brown	None	0.0	13.8	12.4	16.3	36.5	15.1	1.6	4.4	76.6	2.655	Sand/gravel/silt	<5.2	18	18	
				2015/5/17	Sunny	18.0	0.5	19.3	6	Blackish brown	None	0.0	0.1	0.2	0.6	30.4	59.5	3.2	6.0	73.9	2.641	Sand/silt	7.5	25	30.5	
				2015/8/24	Cloudy	26.0	0.3	25.0	5	Dim yellowish brown	Faint swamp	0.0	0.0	0.1	3.2	61.9	31.5	2.6	0.8	74.5	2.633	Sand/silt	<5.3	15	15	
				2015/1/5	Sunny	14.5	0.4	13.5	5	Blackish brown	None	0.0	0.0	0.0	0.3	17.7	61.4	12.7	7.9	67.5	2.655	Sand/silt	15	48	63	
				2016/2/2	Sunny	6.0	0.2	5.8	15	Blackish brown	None	0.0	0.1	0.0	0.3	13.7	63.8	14.2	7.9	59.0	2.674	Sand/silt	<7.4	42	42	
Nakagawa River System	Nakagawa River Area	Nakagawa River	Hiachiomiya City/ Shirasato Town	2015/5/14	Sunny	29.0	1.0	22.0	4	Grayish yellowish brown	None	6.6	48.2	25.1	13.8	5.6	0.3	0.1	0.2	91.7	2.692	Gravel/sand	2.1	6.6	8.7	
				2015/8/25	Cloudy	25.1	0.3	22.5	3	Dark brown	None	9.8	40.3	9.1	8.6	27.3	4.3	0.2	0.3	83.9	2.700	Gravel/sand	<4.5	15	15	
				2015/1/4	Sunny	15.0	0.2	15.6	5	Grayish yellowish brown	Faint fish	2.3	33.5	22.7	21.1	24.5	3.5	0.5	1.9	83.4	2.764	Sand/gravel	<3.7	14	14	
				2016/2/4	Sunny	7.8	0.3	8.0	10	Grayish yellowish brown	Faint sewage	0.0	28.4	28.6	18.7	19.4	2.5	0.0	2.5	89.2	2.685	Sand/gravel	<4.9	11	11	
				2015/5/16	Cloudy	21.0	1.1	20.2	2	Dark brown	Faint earth	0.0	5.6	0.3	0.7	4.4	33.3	40.0	15.8	57.8	2.628	Silt/sand/gravel	6.5	33	39.5	
Shimokuni	Mito City	2015/8/12	Cloudy	31.8	1.1	27.3	4	Blackish brown	None	0.0	0.0	0.0	0.1	28.5	60.6	7.2	3.6	72.6	2.659	Sand/silt	9.3	31	40.3			
		2015/1/12	Cloudy	14.8	1.5	14.5	3	Blackish brown	Faint hydrogen sulfide	0.0	0.0	0.0	0.3	19.7	43.8	25.0	11.3	50.0	2.670	Sand/silt	18	73	91			
		2016/2/15	Cloudy	1.2	0.8	9.8	5	Blackish brown	Faint sewage	0.0	0.7	0.2	0.2	9.6	46.1	31.2	12.0	54.2	2.649	Silt/sand	<6.0	12	12			

Ibaraki Rivers (Sediment) 2/5

Location				Sampling Date	Weather	Air temperature (C)	Water depth (m)	Sediment																Remarks			
No.	Water area	Location	Municipality					Sediment temperature (C)	Sample length (cm)	Color	Odor	Grain size distribution (%)					Sediment content (%)	Density (g/cm ³)	Property	Activity concentration [Bq/kg(dry)]							
												Coarse gravel	Medium gravel	Fine gravel	Coarse sand	Medium sand				Fine sand	Silt	Clay	Cs-134		Cs-137	Total	
12	Nakagawa River Area	Nakagawa River	Katsuma Bridge	Mito City/Hiachinaka City	2015/5/17	Sunny	22.0	3.2	20.3	3	Olive black	Faint rotteness	0.0	58.9	17.8	2.8	5.8	4.0	5.2	5.5	76.3	2.615	Gravel/sand/silt	26	90	116	
					2015/8/25	Cloudy	22.3	3.5	21.2	5	Olive black	Faint hydrogen sulfide	0.0	4.0	1.7	1.3	86.5	5.5	0.5	0.7	77.5	2.678	Sand/silt/gravel	<4.4	17	17	
		2015/11/09	Cloudy	16.3	4.3	17.3	2	Olive black	Faint sewage	0.0	12.5	4.4	6.7	72.3	0.9	0.1	3.3	82.4	2.720	Sand/gravel/silt	<3.8	16	16				
		2016/2/17	Sunny	6.0	4.2	9.0	2	Black	Faint sewage	3.0	63.8	20.2	5.0	3.8	0.5	1.9	1.9	80.6	2.657	Gravel/sand/silt	<4.2	12	12				
		2015/5/17	Sunny	24.5	1.4	20.5	8	Black	Faint hydrogen sulfide	5.5	4.4	2.1	3.6	9.2	34.2	30.6	10.5	46.8	2.551	Silt	110	430	540				
	13	Nakagawa River Area	Nakamaru River	Yanagisawa Bridge	Hiachinaka City	2015/8/27	Cloudy	22.8	1.7	23.0	5	Black	Faint swamp	0.0	0.1	0.5	1.2	6.2	42.0	39.0	11.0	38.3	2.339	Silt	120	460	580
						2015/11/10	Cloudy	17.3	1.5	17.8	6	Black	Faint sewage	0.0	0.0	0.0	0.5	3.1	26.0	48.9	21.4	35.9	2.551	Silt	110	550	660
						2016/2/9	Sunny	2.1	1.5	8.2	10	Black	Faint hydrogen sulfide	0.0	0.0	0.0	0.2	11.3	66.0	15.4	7.0	55.7	2.631	Sand/silt	58	250	308
						2015/5/27	Sunny	23.2	0.4	19.0	5	Dark brown	None	0.0	32.2	8.2	3.9	25.8	26.8	1.9	1.3	81.2	2.747	Sand/gravel	21	67	88
						2015/8/26	Cloudy	21.6	0.2	22.0	5	Dark brown	None	19.1	51.6	10.1	3.8	10.5	4.5	0.2	0.1	85.5	2.812	Sand/gravel/silt	8.5	37	45.5
14	Nakagawa River System	Hinumasae River	Nagoka Bridge	Ibaraki Town	2015/11/12	Cloudy	14.0	0.2	16.0	4	Dark brown	None	15.7	53.0	7.6	1.5	9.4	15.1	0.7	1.0	86.7	2.819	Gravel/sand	12	30	62	
					2016/2/17	Sunny	8.0	0.2	9.0	5	Dark brown	Faint sewage	18.7	35.9	8.3	2.1	11.1	5.5	0.3	0.1	79.0	2.864	Sand/gravel	9.1	51	60.1	
					2015/5/27	Sunny	21.0	0.3	20.4	5	Dim yellowish brown	None	0.0	14.1	33.8	34.8	13.7	2.1	0.0	1.5	83.9	2.639	Gravel/sand	<5.1	17	17	
					2015/8/27	Cloudy	26.2	0.2	22.9	6	Dim yellowish brown	None	0.0	12.2	40.3	35.2	10.2	1.7	0.0	0.3	81.7	2.620	Sand	4.5	13	17.5	
					2015/11/12	Cloudy	14.5	0.2	14.8	4	Dim yellowish brown	None	0.0	1.0	15.8	71.8	9.6	0.3	0.0	1.6	80.4	2.643	Sand	<5.9	6.9	6.9	
					2016/2/17	Sunny	11.0	0.3	6.8	5	Dim yellowish brown	None	0.0	3.1	31.5	50.3	11.5	3.2	0.1	0.5	80.1	2.629	Sand/gravel	3.5	12	15.5	
					2015/5/27	Sunny	21.7	0.4	18.2	5	Dim yellowish brown	None	17.3	37.1	10.9	11.4	15.5	5.4	1.2	1.1	86.9	2.694	Gravel/silt	6.1	25	31.1	
					2015/8/11	Sunny	31.2	1.2	26.1	5	Blackish brown	None	0.0	0.0	0.6	10.8	36.0	31.3	15.9	5.4	62.1	2.563	Sand/silt	20	98	118	
					2015/11/12	Sunny	15.0	0.2	15.1	4	Dim yellowish brown	None	11.5	45.9	13.4	8.4	13.4	6.1	0.3	1.2	86.2	2.704	Gravel/sand	6.9	35	41.9	
					2016/2/9	Sunny	12.3	0.2	10.9	5	Blackish brown	Faint sewage	9.8	44.3	14.5	7.8	13.8	6.7	1.8	1.3	77.1	2.683	Sand/gravel/silt	5.8	25	30.8	
15	Hinumasae River Area	Kasei River	Kasei Bridge	Ibaraki Town	2015/5/15	Sunny	23.5	1.0	21.0	3	Blackish brown	None	0.0	0.4	3.8	10.9	67.3	14.8	1.0	1.9	78.7	2.680	Sand/gravel	19	80	99	
					2015/8/11	Cloudy	28.9	1.1	22.2	5	Blackish brown	None	0.0	0.0	0.9	13.1	67.7	14.7	2.8	0.8	73.8	2.622	Sand/gravel	36	120	156	
					2015/11/10	Cloudy	17.8	0.5	17.0	6	Blackish brown	None	0.0	1.5	9.1	26.8	44.6	11.3	3.4	3.4	72.5	2.666	Sand/gravel	30	130	160	
					2016/2/9	Sunny	10.6	0.3	9.8	4	Blackish brown	Faint sewage	0.0	2.6	7.6	19.1	44.9	17.5	4.4	4.1	66.6	2.631	Sand	32	170	202	
					2015/5/17	Sunny	19.0	0.8	19.8	4	Black	None	0.0	27.2	26.9	16.1	22.7	3.9	0.8	2.4	83.0	2.671	Gravel/sand	58	240	298	
					2015/8/26	Cloudy	24.0	1.3	24.0	5	Black	Faint hydrogen sulfide	0.0	1.5	4.8	7.3	32.9	38.8	5.2	9.6	68.0	2.697	Sand/silt/gravel	39	140	179	
					2015/11/10	Cloudy	18.0	0.9	17.9	3	Black	Faint sewage	0.0	21.5	6.7	7.2	26.8	22.4	10.2	5.3	63.7	2.677	Sand/silt/gravel	39	130	169	
					2016/2/8	Sunny	5.8	0.8	8.0	3	Blackish brown	Faint sewage	0.0	9.3	4.3	4.8	32.2	33.6	10.0	5.9	60.4	2.693	Sand/silt/gravel	9.8	56	65.8	
					2015/5/27	Sunny	24.1	1.1	20.1	6	Blackish brown	None	0.0	5.2	3.9	14.6	45.1	17.8	10.5	4.9	62.8	2.600	Sand/silt/gravel	27	120	147	
					16	Hinumasae River Area	Kasei River	Kasei Bridge	Ibaraki Town	2015/8/27	Cloudy	25.1	1.2	20.3	5	Blackish brown	None	0.0	1.9	6.8	15.6	53.5	15.7	4.3	2.2	66.5	2.628
2015/11/6	Sunny	21.3	1.0	15.0						5	Blackish brown	None	0.0	6.3	8.0	24.0	39.8	8.1	8.4	5.4	77.6	2.654	Sand/silt	20	93	113	
2016/2/17	Sunny	10.0	1.0	10.5						2	Blackish brown	Faint sewage	0.0	12.4	11.4	18.1	44.0	9.1	3.2	1.8	72.7	2.626	Sand/gravel	15	74	89	
2015/5/27	Sunny	22.7	1.0	23.3						4	Brown	None	0.0	3.7	7.9	18.1	60.8	6.0	1.0	2.6	80.5	2.667	Sand/gravel	11	46	57	
2015/8/27	Cloudy	25.5	1.0	21.3						5	Dim yellowish brown	None	0.0	0.6	8.2	24.8	60.3	4.4	1.2	0.6	79.0	2.660	Sand/gravel	13	54	67	
2015/11/6	Sunny	21.2	0.6	17.3						3	Dark olive brown	None	0.0	0.7	2.0	13.3	71.1	5.2	2.6	5.2	77.2	2.652	Sand	15	58	73	
2016/2/17	Sunny	12.5	0.3	10.0						5	Dark brown	None	0.0	0.0	0.1	0.1	10.4	77.8	7.1	4.5	59.3	2.655	Sand	16	90	106	
2015/5/26	Sunny	30.1	0.3	24.1						5	Dark brown	None	0.0	0.0	0.1	34.4	59.0	4.1	0.4	2.0	79.2	2.640	Sand/gravel	14	55	69	
2015/8/27	Cloudy	22.0	0.3	19.7						3	Blackish brown	None	0.0	0.3	2.8	12.6	52.8	27.1	3.8	0.7	79.3	2.655	Sand/gravel	30	110	140	
17	Hinumasae River Area	Daya River	Oya Bridge	Hokota City						2015/5/15	Sunny	16.0	0.2	14.0	3	Dim yellowish brown	None	0.0	0.0	0.0	0.9	17.7	63.5	13.9	4.0	67.1	2.670
					2015/8/11	Cloudy	28.9	1.1	22.2	5	Blackish brown	None	0.0	0.0	0.9	13.1	67.7	14.7	2.8	0.8	73.8	2.622	Sand/gravel	36	120	156	
					2015/11/10	Cloudy	17.8	0.5	17.0	6	Blackish brown	None	0.0	1.5	9.1	26.8	44.6	11.3	3.4	3.4	72.5	2.666	Sand/gravel	30	130	160	
					2016/2/9	Sunny	10.6	0.3	9.8	4	Blackish brown	Faint sewage	0.0	2.6	7.6	19.1	44.9	17.5	4.4	4.1	66.6	2.631	Sand	32	170	202	
					2015/5/17	Sunny	19.0	0.8	19.8	4	Black	None	0.0	27.2	26.9	16.1	22.7	3.9	0.8	2.4	83.0	2.671	Gravel/sand	58	240	298	
					2015/8/26	Cloudy	24.0	1.3	24.0	5	Black	Faint hydrogen sulfide	0.0	1.5	4.8	7.3	32.9	38.8	5.2	9.6	68.0	2.697	Sand/silt/gravel	39	140	179	
					2015/11/10	Cloudy	18.0	0.9	17.9	3	Black	Faint sewage	0.0	21.5	6.7	7.2	26.8	22.4	10.2	5.3	63.7	2.677	Sand/silt/gravel	39	130	169	
					2016/2/8	Sunny	5.8	0.8	8.0	3	Blackish brown	Faint sewage	0.0	9.3	4.3	4.8	32.2	33.6	10.0	5.9	60.4	2.693	Sand/silt/gravel	9.8	56	65.8	
					2015/5/27	Sunny	24.1	1.1	20.1	6	Blackish brown	None	0.0	5.2	3.9	14.6	45.1	17.8	10.5	4.9	62.8	2.600	Sand/silt/gravel	27	120	147	
					18	Hinumasae River Area	Himara River	Himara Bridge	Mito City/Osai Town	2015/5/15	Sunny	23.5	1.0	21.0	3	Blackish brown	None	0.0	0.4	3.8	10.9	67.3	14.8	1.0	1.9	78.7	2.680
2015/8/11	Cloudy	28.9	1.1	22.2						5	Blackish brown	None	0.0	0.0	0.9	13.1	67.7	14.7	2.8	0.8	73.8	2.622	Sand/gravel	36	120	156	
2015/11/10	Cloudy	17.8	0.5	17.0						6	Blackish brown	None	0.0	1.5	9.1	26.8	44.6	11.3	3.4	3.4	72.5	2.666	Sand/gravel	30	130	160	
2016/2/9	Sunny	10.6	0.3	9.8						4	Blackish brown	Faint sewage	0.0	2.6	7.6	19.1	44.9	17.5	4.4	4.1	66.6	2.631	Sand	32	170	202	
2015/5/17	Sunny	19.0	0.8	19.8						4	Black	None	0.0	27.2	26.9	16.1	22.7	3.9	0.8	2.4	83.0	2.671	Gravel/sand	58	240	298	
2015/8/26	Cloudy	24.0	1.3	24.0						5	Black	Faint hydrogen sulfide	0.0	1.5	4.8	7.3	32.9	38.8	5.2	9.6	68.0	2.697	Sand/silt/gravel	39	140	179	
2015/11/10	Cloudy	18.0	0.9	17.9						3	Black	Faint sewage	0.0	21.5	6.7	7.2	26.8	22.4	10.2	5.3	63.						

Ibaraki Rivers (Sediment) 3/5

No.	Location				Sampling Date	Weather	Air temperature (C)	Water depth (m)	Sediment															Activity concentration [Bq/kg(dry)]			Remarks
	Water area	Location	Municipality	Sediment temperature (C)					Sample length (cm)	Color	Odor	Grain size distribution(%)						Sediment content (%)	Density (g/cm ³)	Property	Radioactive cesium						
												Coarse gravel	Medium gravel	Fine gravel	Coarse sand	Medium sand	Fine sand				Silt	Clay	Cs-134	Cs-137	Total		
R i v e r s	Tonegawa River System	Kitaura River Area	Nagare River	Suboi Bridge	Kashima City	2015/5/21	Sunny	28.6	0.1	23.6	5	Dark brown	Faint sewage	6.3	10.3	5.6	9.6	34.3	22.1	4.3	7.5	74.4	2.604	Gravel/sand	45	180	225
						2015/8/28	Cloudy	21.0	0.1	21.2	3	Blackish brown	Faint sewage	0.0	0.5	5.5	11.0	39.6	36.0	1.5	5.9	72.2	2.691	Sand	48	200	248
						2015/1/16	Sunny	16.3	0.1	16.0	2	Dark olive brown	None	0.0	0.5	5.0	20.3	65.6	5.0	1.0	2.7	78.3	2.565	Sand	27	130	157
						2016/2/18	Sunny	9.0	0.2	10.0	1	Dark brown	None	0.0	0.1	8.0	11.0	45.0	11.4	0.0	0.5	76.7	2.702	Sand/gravel	28	330	358
		Sonobe River	Sonobeshin Bridge	Onitama City	2015/5/25	Cloudy	23.5	1.6	21.8	6	Blackish brown	Faint sewage	0.0	0.6	0.8	2.9	36.3	39.4	11.7	8.3	62.9	2.654	Silt/sand	22	110	132	
					2015/8/24	Cloudy	27.2	1.4	24.8	8	Blackish brown	Faint swamp	0.0	0.1	1.5	6.9	38.3	43.9	6.8	2.6	69.1	2.605	Sand/silt	26	120	146	
					2015/11/5	Sunny	20.0	1.8	16.7	3	Blackish brown	None	0.0	0.3	2.7	18.9	62.2	9.2	1.0	5.8	79.7	2.669	Sand	15	75	90	
					2016/2/24	Cloudy	5.2	1.7	8.5	3	Blackish brown	None	0.0	1.4	3.5	17.0	61.4	10.7	2.5	3.3	76.2	2.641	Sand/gravel/silt	21	76	97	
		Sanno River	Tokoro Bridge	Onitama City	2015/5/25	Cloudy	21.6	0.5	21.8	4	Blackish brown	None	0.0	2.6	13.5	32.4	46.7	1.5	0.8	2.5	80.6	2.638	Sand/gravel	81	360	441	
					2015/8/24	Cloudy	26.8	0.3	24.2	4	Blackish brown	Faint sewage	0.0	1.5	2.4	9.0	72.5	11.4	2.5	0.7	72.7	2.637	Sand	110	470	580	
					2015/11/5	Sunny	17.4	0.5	16.8	3	Olive black	Faint sewage	0.0	0.1	1.1	10.3	65.7	15.1	2.5	5.2	71.8	2.695	Sand	100	500	600	
					2016/2/24	Cloudy	6.0	0.6	10.8	3	Dark brown	Faint algae	0.0	1.9	4.4	13.6	64.6	10.0	0.9	4.6	76.6	2.665	Sand/gravel	87	400	497	
		Koise River	Heiwa Bridge	Ishioaka City	2015/5/25	Sunny	19.5	0.5	21.2	5	Black	None	0.0	0.0	2.4	36.7	54.5	7.2	1.3	3.0	75.3	2.610	Sand/gravel	83	27	351	
					2015/8/14	Cloudy	28.0	0.4	26.5	6	Grayish yellowish brown	Faint sewage	0.0	0.1	4.8	34.1	51.4	3.7	4.8	1.1	77.6	2.601	Sand/silt	89	40	48.9	
					2015/11/5	Sunny	11.9	0.4	13.0	3	Blackish brown	None	0.0	0.0	0.0	1.9	21.8	35.7	29.6	11.1	39.9	2.591	Silt/sand	42	230	262	
					2016/2/24	Cloudy	4.8	0.3	7.8	1	Olive black	Faint sewage	0.0	0.0	0.0	1.4	44.7	42.5	6.4	5.0	62.0	2.643	Sand/silt	17	86	103	
		Kajinashi River	Kamishuku Bridge	Namegata City	2015/5/25	Cloudy	17.2	0.6	20.1	4	Dark brown	None	0.0	0.9	2.3	6.6	69.3	15.1	2.0	3.8	78.5	2.655	Sand/gravel/silt	19	71	90	
					2015/8/14	Cloudy	25.0	0.4	24.0	6	Dark brown	None	0.0	0.0	0.8	18.6	75.4	3.2	1.2	0.8	79.6	2.626	Sand/gravel	14	78	92	
					2015/11/5	Sunny	20.6	0.5	18.2	4	Blackish brown	None	0.0	1.3	2.8	12.4	64.8	13.1	1.5	4.2	75.6	2.686	Sand	21	73	94	
					2016/2/18	Sunny	10.2	0.4	8.5	5	Dim yellowish brown	Faint sewage	0.0	0.4	2.8	11.6	71.2	12.6	0.8	0.7	77.7	2.666	Sand/gravel	11	54	65	
		Hishiki River	Hishiki Bridge	Kasumigaura City	2015/5/24	Cloudy	24.8	0.3	24.2	5	Dim yellowish brown	None	0.0	1.3	5.9	19.7	62.8	6.4	1.3	2.8	78.0	2.674	Sand/gravel	44	170	214	
					2015/8/14	Cloudy	24.1	0.5	25.0	6	Dark brown	None	0.0	0.0	0.2	2.4	65.8	28.0	2.9	0.8	71.9	2.629	Sand	55	250	305	
					2015/11/5	Sunny	18.6	0.4	17.0	3	Blackish brown	None	0.0	0.4	2.3	7.2	56.6	26.1	5.1	2.3	75.2	2.674	Sand	55	220	275	
					2016/2/18	Cloudy	10.3	0.4	8.0	3	Dim yellowish brown	None	0.0	0.2	1.8	6.9	67.8	21.6	1.0	0.7	71.2	2.667	Sand	42	210	252	
		Ichinose River	Kawataka Bridge	Kasumigaura City	2015/5/26	Sunny	24.2	1.0	18.9	3	Blackish brown	None	0.0	0.1	0.7	5.8	37.9	37.7	10.7	7.2	59.3	2.630	Silt/sand	79	330	409	
					2015/8/28	Cloudy	23.0	1.3	21.1	5	Dark brown	None	0.0	2.6	5.0	13.7	55.7	9.4	6.0	7.6	63.7	2.673	Sand/gravel/silt	77	290	367	
					2015/11/6	Sunny	11.0	1.3	13.0	2	Blackish brown	Faint earth	0.0	3.6	2.1	4.8	27.4	27.5	24.5	10.2	46.7	2.623	Silt/sand	86	330	416	
					2016/2/18	Sunny	8.5	0.7	8.0	5	Blackish brown	Faint sewage	0.0	0.0	1.0	6.8	37.7	22.9	24.8	6.9	47.9	2.607	Sand/silt	85	410	495	
		Sakai River	Sakai Bridge/ National Route 354	Tsuchitara City	2015/5/24	Sunny	29.8	0.4	23.6	6	Olive black	None	0.0	4.8	11.4	18.0	43.7	12.9	5.9	3.3	83.0	2.659	Sand/gravel/silt	93	35	44.1	
					2015/8/13	Cloudy	29.0	0.3	28.3	4	Olive black	Faint earth	0.0	2.3	17.6	19.1	30.6	26.1	3.0	0.9	0.5	79.7	2.641	Sand/gravel/silt	51	230	281
					2015/11/4	Sunny	19.0	0.3	19.0	2	Olive black	None	0.0	4.1	39.3	19.5	15.7	18.2	1.0	0.2	2.0	83.0	2.688	Gravel/sand	16	66	82
					2016/2/24	Cloudy	6.5	0.5	10.5	3	Olive black	Faint fish	0.0	13.4	29.8	17.3	14.7	17.8	2.8	1.1	3.0	74.0	2.655	Sand/gravel	17	130	147
		Shinkawa River	Shinten Bridge	Tsuchitara City	2015/5/25	Sunny	24.3	1.1	21.1	6	Black	None	0.0	0.0	0.0	0.2	0.5	2.3	75.7	21.3	24.7	2.396	Silt	270	1,000	1,270	
					2015/8/13	Cloudy	29.8	2.1	27.3	12	Olive black	Faint sewage	0.0	0.0	0.0	0.0	0.0	0.9	64.3	34.8	23.9	2.435	Silt	340	1,500	1,840	
					2015/11/4	Sunny	16.5	1.9	16.0	5	Olive black	Faint sewage	0.0	0.2	0.1	0.5	3.3	3.8	66.4	25.8	28.0	2.472	Silt	250	970	1,220	
					2016/2/23	Cloudy	9.2	2.1	9.5	4	Blackish brown	Faint sewage	0.0	0.0	0.0	0.6	12.2	26.9	34.0	26.2	28.2	2.497	Silt	250	1,100	1,350	
		Sakura River	Eiri Bridge	Tsuchitara City/ Fushiki City	2015/5/24	Cloudy	24.2	0.6	22.6	6	Blackish brown	None	0.0	0.0	0.0	0.0	2.9	69.2	21.7	6.3	71.1	2.644	Sand/gravel/silt	77	28	35.7	
					2015/8/13	Cloudy	26.0	0.6	22.5	10	Black	Faint sewage	0.0	0.0	0.0	0.1	9.1	73.8	11.6	5.4	63.2	2.610	Sand/silt	93	25	37.1	
					2015/11/4	Sunny	16.5	0.6	15.5	5	Olive black	None	0.0	0.0	0.0	0.1	2.2	46.4	33.5	17.8	46.0	2.639	Silt/sand	15	60	75	
					2016/2/24	Cloudy	5.2	0.5	8.3	3	Blackish brown	Faint sewage	0.0	0.0	0.0	0.3	7.0	65.1	15.0	12.6	59.5	2.622	Sand/silt	10	43	53	
		Bizen River	Bizen-gawa Bridge	Tsuchitara City	2015/5/24	Cloudy	21.3	0.7	22.1	6	Olive black	Faint sewage	0.0	0.0	0.7	2.5	27.5	52.6	10.7	6.0	65.4	2.598	Silt/sand/gravel	360	1,400	1,760	
					2015/8/13	Cloudy	29.0	0.7	23.1	5	Black	Faint oil	0.0	1.3	3.8	3.2	19.8	29.1	29.0	13.8	40.0	2.584	Silt/sand	150	680	830	
					2015/11/4	Sunny	18.6	0.6	17.0	6	Olive black	Faint sewage	0.0	0.0	0.1	0.5	6.2	71.8	13.8	7.6	62.7	2.668	Silt/sand	330	1,500	1,830	
					2016/2/23	Cloudy	9.8	0.8	10.0	3	Olive black	Faint sewage	0.0	0.0	0.0	0.0	4.3	66.8	19.0	9.8	53.7	2.616	Sand/silt	360	1,800	2,160	
		Hanamura River	Shiwa Bridge	Tsuchitara City	2015/5/23	Cloudy	27.7	0.4	23.2	5	Dim yellowish brown	None	0.0	10.8	42.4	10.9	10.6	21.1	3.2	0.5	0.7	80.2	2.718	Sand/gravel	56	200	256
					2015/8/13	Cloudy	32.9	0.4	29.5	6	Blackish brown	None	0.0	38.8	12.7	9.1	25.2	12.9	1.0	0.4	78.3	2.689	Sand/gravel/silt	51	260	311	
					2015/11/4	Sunny	15.0	0.3	16.0	2	Olive black	None	0.0	40.2	29.1	13.2	13.1	2.1	0.7	1.6	82.3	2.756	Sand/gravel	37	160	197	
					2016/2/23	Cloudy	10.2	0.2	10.5	3	Dark brown	None	0.0	36.8	24.0	14.3	19.3	3.0	1.1	1.5	83.8	2.701	Sand/gravel	38	170	208	
Seimei River	Katsushashi Bridge	Ami Town	2015/5/23	Sunny	28.6	0.6	22.2	4	Dark brown	Faint earth	0.0	6.7	3.5	7.9	68.7	9.6	0.1	3.5	76.1	2.712	Sand/gravel	130	480	610			
			2015/8/13	Cloudy	30.0	0.5	28.0	6	Blackish brown	None	0.0	1.8	1.7	2.5	58.6	27.1	4.8	3.4	69.8	2.637	Sand/silt	190	790	980			
			2015/11/27	Sunny	13.0	0.5	13.0	2	Dark brown	Faint sewage	0.0	0.3	1.0	10.9	75.0	9.1	3.0	0.7	75.7	2.702	Sand	130	530	660			
			2016/2/16	Sunny	7.9	0.5	7.5	2	Dark brown	None	0.0	14.4	13.4	2.5	5.6	54.0	7.8	1.7	0.5	73.8	2.717	Sand/gravel	110	570	680		

Ibaraki Rivers (Sediment) 4/5

No.	Location				Sampling Date	Weather	Air temperature (C)	Water depth (m)	Sediment														Activity concentration [Bq/kg(dry)]			Remarks	
	Water area	Location	Municipality	Sediment temperature (C)					Sample length (cm)	Color	Odor	Grain size distribution(%)						Sediment content (%)	Density (g/cm ³)	Property	Radioactive cesium						
												Coarse gravel	Medium gravel	Fine gravel	Coarse sand	Medium sand	Fine sand				Silt	Clay	Cs-134	Cs-137	Total		
39	Kasumigawa River Area	Onogawa River	Okuhara-obashi Bridge	Ryugasaki City/Utsunomiya City	2015/5/23	Sunny	25.7	0.4	19.8	5	Blackish brown	Faint sewage	0.0	0.0	0.1	0.5	50.4	37.7	5.5	5.8	74.8	2.652	Sand/silt	81	200	371	
					2015/8/12	Cloudy	28.5	0.4	29.0	6	Blackish brown	None	0.0	0.0	0.0	3.1	42.0	35.7	14.6	4.7	55.6	2.584	Sand/silt	86	390	476	
					2015/11/28	Sunny	16.3	0.3	12.1	3	Blackish brown	None	0.0	0.1	0.1	0.5	52.2	39.8	4.3	3.0	66.2	2.653	Sand/silt	63	380	443	
		2016/2/11	Sunny	10.2	0.3	8.0	5	Blackish brown	Faint sewage	0.0	0.0	0.0	0.1	29.2	66.6	3.4	0.7	71.1	2.649	Sand	59	260	319				
		2015/6/5	Cloudy	20.2	1.2	23.0	3	Olive black	Faint sewage	0.0	0.3	1.6	1.8	13.9	56.5	29.0	16.9	50.0	2.633	Silt/sand	60	240	300				
		2015/8/28	Cloudy	21.0	1.5	22.5	6	Olive black	Faint sewage	0.0	0.2	0.9	1.5	12.6	47.5	24.2	13.2	51.1	2.679	Silt/sand	59	240	299				
	40	Shintone River	Shintone Bridge	Inashiki City	2015/11/21	Cloudy	15.5	1.2	16.3	6	Olive black	Faint sewage	0.0	0.1	0.2	0.8	18.1	60.6	11.8	8.4	61.3	2.706	Silt/sand	45	210	255	
					2016/2/11	Sunny	8.8	1.3	5.9	4	Olive black	Faint sewage	0.0	0.0	1.5	2.7	19.1	45.9	24.7	6.2	50.1	2.620	Silt/sand	48	210	258	
					2015/6/5	Cloudy	24.0	0.8	20.2	4	Olive black	Faint sewage	0.0	0.4	1.1	1.0	7.1	9.6	63.3	17.6	31.8	2.542	Silt	42	220	262	
					2015/8/28	Rain	22.0	0.6	20.9	9	Olive black	Faint sewage	0.0	0.0	0.2	1.2	9.5	14.2	58.8	16.1	32.8	2.602	Silt	39	180	219	
	41	Hinashinogawa River Area	Yorokoshi River	Horinosuchi Bridge	Itako City	2015/11/21	Sunny	12.8	0.6	15.0	6	Dark reddish brown	Faint sewage	0.0	2.9	1.3	2.1	15.0	9.8	52.2	18.8	31.9	2.593	Silt	30	160	190
						2016/2/11	Sunny	6.5	0.7	6.0	5	Olive black	Faint sewage	0.0	0.0	0.7	2.4	17.7	16.0	51.1	12.2	36.8	2.569	Silt	34	200	234
						2015/5/29	Cloudy	22.5	2.3	22.1	6	Black	Faint sewage	0.0	0.0	0.4	0.3	6.2	50.5	32.6	10.0	49.7	2.626	Silt	51	200	251
			2015/8/29	Cloudy	22.2	2.6	22.9	7	Yellowish gray	Faint swamp	0.0	0.4	0.0	0.2	21.4	60.0	7.8	10.2	65.6	2.697	Sand/silt	42	160	202			
			2015/11/13	Cloudy	15.5	2.3	16.5	4	Black	Faint sewage	0.0	0.0	0.2	0.5	20.3	64.7	6.0	8.4	64.9	2.679	Silt/sand	35	190	185			
			2016/2/16	Sunny	7.8	2.6	9.5	5	Blackish brown	Faint sewage	0.0	0.2	0.3	0.8	11.2	64.1	19.1	4.3	45.8	2.614	Silt	39	170	209			
	43	Kinugawa River	Kawashima Bridge	Chikusei City	2015/5/28	Sunny	23.5	0.4	22.1	5	Dark olive brown	None	0.0	38.6	11.3	0.8	23.5	20.3	4.5	1.0	85.7	2.718	Sand/gravel	0.87	3.9	4.77	
					2015/8/10	Sunny	28.8	0.3	25.0	4	Dark olive brown	None	0.0	11.9	2.6	5.9	39.6	34.3	4.8	1.0	75.2	2.682	Sand/gravel	<4.8	9.7	9.7	
					2015/11/24	Sunny	17.3	0.3	15.3	2	Dark olive brown	None	16.0	53.3	7.6	9.5	11.6	1.3	0.6	0.2	83.0	2.688	Sand/gravel	<0.81	0.95	0.95	
			2016/2/22	Cloudy	9.2	0.4	9.5	10	Dark olive brown	Faint fish	44.1	38.0	9.4	6.7	25.7	4.3	0.8	1.1	80.4	2.700	Sand/gravel	<1.7	3.3	3.3			
2015/5/22			Sunny	24.5	0.4	20.9	6	Olive black	Faint sewage	0.0	0.0	0.4	0.0	10.9	63.4	12.8	12.4	63.8	2.663	Sand/silt	14	60	74				
2015/8/11			Cloudy	29.0	0.3	29.3	6	Olive black	Faint hydrogen sulfide	0.0	0.0	0.0	0.1	8.1	68.4	16.5	6.9	63.3	2.640	Sand	16	87	103				
44	Kinugawa River Area	Takishita Bridge	Moriya City	2015/11/27	Sunny	8.8	0.2	11.9	3	Olive black	None	0.0	4.5	2.6	4.9	58.4	27.0	2.0	0.6	74.2	2.834	Sand/gravel	<4.5	18	18		
				2016/2/23	Cloudy	5.0	0.7	9.4	3	Olive black	None	0.0	0.2	0.6	0.9	53.4	38.8	1.7	4.4	73.3	2.711	Sand	8.4	29	37.4		
				2015/5/28	Cloudy	21.9	0.4	20.5	3	Olive brown	None	0.0	35.0	20.2	17.0	24.8	2.0	0.1	0.9	83.6	2.731	Gravel/sand	8.8	26	34.8		
		2015/8/10	Sunny	31.5	0.3	27.5	2	Dark olive brown	None	0.0	39.7	16.6	19.0	20.1	3.4	0.9	0.3	83.2	2.724	Gravel/sand	<4.1	9.0	9.0				
		2015/11/24	Cloudy	16.2	0.3	16.0	2	Blackish brown	None	9.2	58.3	8.4	5.9	11.4	5.0	1.2	0.7	77.3	2.697	Sand/gravel	<4.2	26	26				
		2016/2/22	Sunny	11.0	0.4	10.9	5	Blackish brown	None	29.1	36.4	8.4	5.5	12.4	5.7	1.0	1.5	80.8	2.748	Gravel/sand	4.8	22	26.8				
46	Kokai River	Kuroko Bridge	Chikusei City	2015/5/28	Sunny	27.0	0.4	22.1	5	Olive black	Faint sewage	0.0	0.0	0.3	1.9	27.4	44.5	15.3	10.7	57.2	2.642	Sand/silt	29	99	128		
				2015/8/11	Sunny	29.2	0.6	29.0	6	Olive black	Faint hydrogen sulfide	0.0	0.1	0.6	0.8	14.0	94.6	20.4	9.5	45.3	2.574	Sand/silt	39	120	159		
				2015/11/24	Sunny	16.5	0.2	16.0	3	Olive black	None	0.0	0.1	0.3	1.1	26.3	51.9	13.2	7.1	51.8	2.618	Sand/silt	22	110	132		
		2016/2/22	Cloudy	8.8	0.3	10.2	3	Olive black	Faint sewage	0.0	0.0	0.0	0.9	22.5	55.2	10.2	11.2	52.5	2.641	Sand/silt	21	82	103				
		2015/5/23	Sunny	25.2	2.9	22.8	3	Dark brown	Faint swamp	0.0	0.0	1.4	21.9	48.4	8.7	12.5	7.1	80.0	2.633	Sand/gravel/silt	16	63	79				
		2015/8/12	Sunny	35.0	0.5	33.0	8	Blackish brown	None	0.0	15.5	4.4	2.1	47.2	28.4	1.8	0.6	74.8	2.683	Sand/gravel	12	48	60				
47	Fumimaki Bridge	Toride City	2015/11/28	Sunny	13.3	2.5	12.5	2	Dark brown	None	0.0	0.0	0.0	0.1	73.5	24.7	1.0	0.7	73.3	2.738	Sand	7.2	34	41.2			
			2016/2/11	Sunny	9.0	1.3	7.0	3	Blackish brown	None	0.0	0.0	0.0	0.3	69.3	29.0	0.7	0.7	74.8	2.678	Sand	8.1	32	40.1			
			2015/5/22	Sunny	25.1	2.3	20.3	5	Blackish brown	Faint sewage	0.0	0.0	0.1	0.1	12.9	71.7	8.0	7.2	65.7	2.598	Sand/silt	40	160	200			
			2015/8/11	Cloudy	34.0	1.7	30.0	6	Blackish brown	Faint sewage	0.0	0.0	0.0	0.1	12.8	78.0	5.6	3.5	63.8	2.629	Sand/silt	38	120	158			
48	Kokai River Area	Yatagawa River	Mantama Bridge	2015/11/27	Sunny	12.1	1.3	13.2	3	Blackish brown	None	0.0	0.0	0.0	0.2	59.8	36.7	2.4	0.7	72.0	2.667	Sand/silt	29	81	103		
				2016/2/23	Cloudy	9.0	1.4	9.5	4	Blackish brown	Faint hydrogen sulfide	0.0	0.3	0.4	0.3	10.0	82.2	2.5	4.3	71.3	2.666	Sand/silt	19	88	107		
				2015/5/22	Cloudy	23.5	1.3	22.1	6	Dark brown	None	0.0	0.8	3.4	13.9	32.0	21.3	22.6	6.1	55.6	2.588	Sand/gravel/silt	46	160	206		
		2015/8/11	Cloudy	34.0	1.3	30.0	3	Blackish brown	None	0.0	4.0	0.3	2.2	17.1	40.1	29.3	7.0	55.0	2.533	Sand/silt/gravel	57	180	237				
		2015/11/27	Sunny	10.3	0.2	13.7	2	Dark brown	Faint hydrogen sulfide	0.0	1.0	1.2	4.1	39.8	39.0	9.0	5.9	56.8	2.643	Sand/silt/gravel	45	230	275				
		2016/2/23	Cloudy	7.8	0.4	10.0	5	Blackish brown	Faint sewage	0.0	5.2	2.2	3.7	26.9	43.1	10.8	8.1	53.3	2.583	Sand/silt/gravel	17	65	82				
49	Nishiyata River	Sakaimatsu Bridge	Tsukuba City	2015/5/23	Cloudy	25.5	1.0	19.3	4	Dim yellowish brown	None	0.0	5.9	11.1	17.1	38.8	11.0	11.1	5.0	75.2	2.648	Sand/gravel/silt	70	300	370		
				2015/8/11	Cloudy	34.0	0.8	32.3	2	Dark brown	None	0.0	15.6	14.4	16.6	40.4	8.3	3.4	1.3	73.5	2.631	Sand/gravel/silt	86	400	486		
				2015/11/27	Sunny	15.2	0.6	13.0	3	Dim yellowish brown	None	0.0	1.2	1.9	11.9	65.3	12.4	4.4	2.9	74.6	2.733	Sand/silt/gravel	78	290	368		
				2016/2/23	Cloudy	8.0	0.8	9.8	2	Dim yellowish brown	Faint fish	0.0	15.0	13.5	17.9	39.0	7.6	4.1	3.1	74.3	2.660	Sand/gravel	84	380	464		
50	Inari River	Opaki Bridge	2015/8/11	Cloudy	34.0	0.8	32.3	2	Dark brown	None	0.0	15.6	14.4	16.6	40.4	8.3	3.4	1.3	73.5	2.631	Sand/gravel/silt	86	400	486			
			2015/11/27	Sunny	15.2	0.6	13.0	3	Dim yellowish brown	None	0.0	1.2	1.9	11.9	65.3	12.4	4.4	2.9	74.6	2.733	Sand/silt/gravel	78	290	368			

Ibaraki Rivers (Sediment) 5/5

R i v e r s	Location				Sampling Date	Weather	Air temperature (°C)	Water depth (m)	Sediment																Remarks					
	No.	Water area	Location	Municipality					Sediment temperature (°C)	Sample length (cm)	Color	Odor	General items									Sediment content (%)	Density (g/cm ³)	Property		Activity concentration [Bq/kg(dry)]				
													Coarse gravel	Medium gravel	Grain size distribution(%)			Fine sand	Silt	Clay	Cs-134					Cs-137	Total			
															Fine gravel	Coarse sand	Medium sand													
51	Tonegawa River System	Tonegawa River Area	Tonegawa River	Kuribashi Bridge	Koga City	2015/5/28	Sunny	27.0	0.6	20.9	5	Olive black	Faint swamp	0.0	0.0	0.0	0.3	7.0	80.9	7.9	3.9	70.5	2.755	Sand	11	39	50			
						2015/8/10	Cloudy	29.1	0.5	27.5	5	Olive black	Faint swamp	0.0	0.0	0.1	9.2	77.7	8.6	4.4	66.8	2.700	Sand	13	59	72				
						2015/11/24	Cloudy	16.3	0.2	13.9	3	Olive black	Faint sewage	0.0	0.0	0.4	17.2	65.0	11.3	6.1	71.2	2.746	Sand/silt	9.6	45	52.6				
				Fukawa	Tone Town	2016/2/22	Cloudy	7.8	0.1	8.0	5	Olive black	Faint sewage	0.0	0.0	0.0	5.2	67.1	17.9	9.8	57.1	2.699	Sand	13	66	79				
						2015/5/22	Sunny	28.5	0.6	21.3	6	Blackish brown	Faint sewage	17.9	22.9	2.2	1.0	6.0	23.1	17.8	9.2	76.0	2.692	Sand/gravel/silt	23	100	123			
						2015/8/12	Sunny	34.0	0.5	30.8	6	Olive black	Faint swamp	0.0	0.3	0.4	0.5	5.3	53.5	29.6	10.4	53.0	2.584	Sand/silt	24	110	134			
				Sawara	Inashiki City	2015/11/21	Cloudy	16.0	0.1	16.8	3	Blackish brown	None	0.0	0.0	0.0	0.0	29.3	65.9	1.0	3.8	72.8	2.881	Sand	<4.6	14	14			
						2016/2/11	Sunny	7.0	0.2	7.0	5	Blackish brown	Faint sewage	0.0	0.1	0.1	0.1	34.0	63.9	1.1	0.7	71.3	2.812	Sand	5.3	26	31.3			
						2015/5/29	Cloudy	22.2	0.5	22.1	5	Dim yellowish brown	None	11.9	47.0	21.4	9.9	9.3	0.1	0.2	0.2	85.1	2.678	Gravel/sand	<5.4	14	14			
				53					2015/8/28	Cloudy	23.2	0.2	23.2	6	Blackish brown	Faint fish	2.1	42.0	19.5	11.4	17.9	3.6	1.5	2.0	77.7	2.699	Sand/gravel	<7.8	26	26
									2015/11/13	Cloudy	16.5	0.3	16.0	4	Brownish gray	Faint sewage	9.4	19.6	5.2	4.5	11.3	29.7	14.1	6.3	77.9	2.685	Gravel/sand/silt	<4.3	13	13
									2016/2/19	Sunny	14.5	0.2	12.0	15	Blackish brown	None	21.4	26.5	5.4	3.5	8.4	19.9	10.0	4.8	72.1	2.685	Sand/silt/gravel	6.0	37	43

Ibaraki Rivers (Surrounding Environment) 1/5

R i v e r s	Location				Sampling Date	Weather	Air temperature (°C)	Surrounding Environment(Soil,Air dose)											Remarks		
	No.	Water area		Municipality				Left bank			Air Dose (µSv/h)	Right bank			Air Dose (µSv/h)						
		Location	Color					Odor	Property	Activity concentration [Bq/kg(dry)]			Color	Odor		Property	Activity concentration [Bq/kg(dry)]				
										Radioactive cesium							Radioactive cesium				
Cs-134	Cs-137	Total	Cs-134	Cs-137	Total																
1	Tagagawa River System	Satone River	Yamagoya Bridge	Kitabaraki City	2015/5/30	Cloudy	22.6	Blackish brown	Faint earth	Loamy	550	1,900	2,450	0.16	Blackish brown	Faint earth	Loamy	460	1,500	1,960	0.16
					2015/8/22	Cloudy	26.2	Blackish brown	Faint earth	Loamy	420	1,600	2,020	0.15	Blackish brown	Faint earth	Loamy	530	2,000	2,530	0.16
					2015/11/7	Cloudy	13.8	Blackish brown	Faint earth	Loamy	460	2,000	2,460	0.15	Blackish brown	Faint earth	Loamy	950	3,700	4,650	0.22
					2016/2/2	Sunny	-1.5	Blackish brown	Faint earth	Loamy	550	2,400	2,950	0.14	Blackish brown	Faint earth	Loamy	460	2,200	2,660	0.15
					2015/5/30	Sunny	24.5	Blackish brown	Faint earth	Loamy	220	780	1,000	0.08	Blackish brown	Faint earth	Loamy	450	1,600	2,050	0.09
					2015/8/22	Cloudy	27.0	Blackish brown	Faint earth	Loamy	310	1,300	1,610	0.10	Dark brown	Faint earth	Loamy	230	970	1,200	0.09
		Hanazono River	Murayama Bridge	Kitabaraki City	2015/11/7	Cloudy	16.3	Blackish brown	Faint earth	Loamy	390	1,800	2,190	0.10	Blackish brown	Faint earth	Loamy	460	2,000	2,460	0.10
					2016/2/2	Sunny	4.5	Blackish brown	Faint earth	Loamy	210	890	1,100	0.08	Blackish brown	Faint earth	Loamy	370	1,600	1,970	0.10
					2015/5/30	Sunny	23.4	Black	Faint earth	Loamy	190	710	900	0.09	Dark brown	None	Loamy	110	360	470	0.10
					2015/8/21	Cloudy	24.0	Blackish brown	Faint earth	Loamy	180	710	890	0.09	Dark brown	Faint earth	Loamy	120	620	740	0.10
					2015/11/6	Sunny	17.2	Blackish brown	Faint earth	Loamy	94	470	564	0.10	Dark brown	Faint earth	Loamy	86	430	516	0.11
					2016/2/25	Sunny	5.0	Blackish brown	Faint earth	Loamy	120	570	690	0.09	Dim yellowish brown	Faint earth	Loamy	95	440	535	0.08
	5	Okita River	Sakae Bridge	Takahagi City	2015/5/30	Sunny	22.4	Dim yellowish brown	Faint earth	Loamy	23	84	107	0.06	Dark brown	Faint earth	Loamy	87	320	407	0.06
					2015/8/22	Cloudy	28.5	Grayish yellowish brown	Faint earth	Sandy	41	140	181	0.07	Dark brown	Faint earth	Loamy	96	410	506	0.06
					2015/11/6	Sunny	16.5	Dim yellowish brown	Faint earth	Sandy	18	92	110	0.08	Dark brown	Faint earth	Loamy	65	330	395	0.07
					2016/2/3	Cloudy	2.0	Dim yellowish brown	Faint earth	Sandy	34	180	214	0.06	Dark brown	Faint earth	Loamy	71	400	471	0.05
					2015/5/31	Sunny	28.0	Dark brown	Faint earth	Loamy	130	480	610	0.11	Dark brown	Faint earth	Loamy	120	480	600	0.11
					2015/8/22	Cloudy	32.0	Dark brown	Faint earth	Loamy	190	710	900	0.11	Dark brown	Faint earth	Loamy	93	420	513	0.10
	6	Hanauki River	Sakai Bridge	Kitabaraki City	2015/11/7	Cloudy	15.0	Dark brown	Faint earth	Loamy	160	670	830	0.10	Dark brown	Faint earth	Loamy	100	440	540	0.13
					2016/2/2	Sunny	8.5	Dark brown	Faint earth	Loamy	140	660	800	0.11	Dark brown	Faint earth	Loamy	110	510	620	0.10
					2015/5/31	Sunny	25.2	Dim yellowish brown	Faint earth	Loamy	190	680	870	0.09	Dim yellowish brown	Faint earth	Loamy	290	1,000	1,290	0.10
					2015/8/24	Cloudy	24.5	Dim yellowish brown	Faint earth	Loamy	130	550	680	0.12	Dim yellowish brown	Faint earth	Loamy	200	820	1,020	0.08
					2015/11/5	Sunny	18.8	Dim yellowish brown	Faint earth	Loamy	180	780	960	0.10	Dim yellowish brown	Faint earth	Loamy	330	1,400	1,730	0.10
					2016/2/1	Cloudy	5.2	Blackish brown	Faint earth	Loamy	170	790	960	0.08	Dim yellowish brown	Faint earth	Loamy	200	980	1,180	0.09
8	Kujigawa River System	Kujigawa River	Yamagata	Hitachiomiya City	2015/5/16	Cloudy	23.4	Blackish brown	Faint earth	Loamy	44	180	224	0.09	Dark brown	Faint earth	Sandy	4.6	18	22.6	0.09
					2015/8/25	Cloudy	27.0	Blackish brown	Faint earth	Loamy	48	210	258	0.09	Dim yellowish brown	Faint earth	Sandy	7.4	35	42.4	0.08
					2015/11/4	Sunny	18.3	Blackish brown	Faint earth	Loamy	19	58	77	0.09	Dark brown	Faint earth	Loamy	26	150	176	0.08
					2016/2/4	Sunny	8.5	Blackish brown	Faint earth	Loamy	39	230	269	0.09	Dark brown	Faint earth	Loamy	38	190	228	0.09
					2015/5/17	Sunny	18.0	Blackish brown	Faint earth	Loamy	52	240	292	0.09	Dark brown	Faint earth	Loamy	140	550	690	0.09
					2015/8/24	Cloudy	26.0	Dark brown	Faint earth	Loamy	83	310	393	0.07	Dim yellowish brown	Faint earth	Loamy	100	390	490	0.09
9	Nakagawa River System	Nakagawa River Area	Noguchi	Hitachiomiya City/ Shirotsato Town	2015/11/5	Sunny	14.5	Blackish brown	Faint earth	Loamy	150	560	710	0.08	Dark brown	Faint earth	Loamy	160	570	730	0.09
					2016/2/2	Sunny	6.0	Blackish brown	Faint earth	Loamy	53	290	343	0.07	Blackish brown	Faint earth	Loamy	140	700	840	0.09
					2015/5/14	Sunny	29.0	Blackish brown	Faint earth	Loamy	67	240	307	0.08	Blackish brown	Faint earth	Sandy	10	36	46	0.07
					2015/8/25	Cloudy	25.1	Dark brown	Faint earth	Loamy	81	350	431	0.08	Blackish brown	Faint earth	Loamy	6.6	37	43.6	0.07
					2016/11/4	Sunny	15.0	Blackish brown	Faint earth	Loamy	78	350	428	0.07	Blackish brown	Faint earth	Loamy	5.9	33	38.9	0.06
					2016/2/4	Sunny	7.8	Blackish brown	Faint earth	Loamy	87	430	517	0.08	Blackish brown	Faint earth	Loamy	<9.7	40	40	0.06
11	Shimokunii	Mito City	2015/5/16	Cloudy	21.0	Dim yellowish brown	Faint earth	Loamy	31	140	171	0.08	Dim yellowish brown	Faint earth	Loamy	170	580	750	0.11		
			2015/8/12	Cloudy	31.8	Brown	Faint earth	Loamy	35	140	175	0.08	Dark brown	Faint earth	Loamy	130	520	650	0.11		
			2015/11/12	Cloudy	14.8	Dim yellowish brown	Faint earth	Loamy	31	150	181	0.07	Dim yellowish brown	Faint earth	Loamy	88	360	448	0.09		
			2016/2/15	Cloudy	1.2	Dim yellowish brown	Faint earth	Loamy	20	100	120	0.07	Blackish brown	Faint earth	Loamy	140	580	720	0.11		

Ibaraki Rivers (Surrounding Environment) 2/5

R i v e r s	Location				Sampling Date	Weather	Air temperature (°C)	Surrounding Environment (Soil, Air dose)											Remarks					
	No.	Water area		Municipality				Left bank			Right bank													
		Color	Odor					Property	Activity concentration [Bq/kg(dry)]			Air Dose (µSv/h)	Color	Odor	Property	Activity concentration [Bq/kg(dry)]								
									Radioactive cesium							Radioactive cesium								
			Cs-134	Cs-137	Total				Cs-134	Cs-137	Total													
12	Nakagawa River Area	Nakagawa River	Katsuta Bridge	Mito City/ Hitachinaka City	2015/5/17	Sunny	22.0	Dark brown	Faint earth	Loamy	64	280	344	0.08	Dark brown	Faint earth	Loamy	170	630	800	0.08			
					2015/8/25	Cloudy	22.3	Dim yellowish brown	Faint earth	Loamy	48	180	228	0.06	Brownish gray	Faint earth	Loamy	100	390	490	0.08			
					2015/11/10	Cloudy	16.8	Dark brown	Faint earth	Loamy	41	200	241	0.06	Dark brown	Faint earth	Loamy	110	400	510	0.09			
		Nakamaru River	Yanagisawa Bridge	Hitachinaka City	2016/2/17	Sunny	6.0	Dark brown	Faint earth	Loamy	61	260	321	0.06	Blackish brown	Faint earth	Loamy	60	320	380	0.08			
					2015/5/17	Sunny	24.5	Dim yellowish brown	Faint earth	Loamy	250	810	1,060	0.09	Blackish brown	Faint earth	Loamy	24	110	134	0.08			
					2015/8/27	Cloudy	22.8	Dim yellowish brown	Faint earth	Loamy	61	300	361	0.08	Dark brown	Faint earth	Loamy	25	110	135	0.07			
	13	Nakagawa River Area	Nakamaru River	Yanagisawa Bridge	Hitachinaka City	2015/11/10	Cloudy	17.3	Dim yellowish brown	Faint earth	Loamy	68	300	368	0.07	Blackish brown	Faint earth	Loamy	24	75	99	0.08		
						2016/2/9	Sunny	2.1	Dark brown	Faint earth	Loamy	33	180	211	0.08	Blackish brown	Faint earth	Loamy	12	82	94	0.07		
						2015/5/27	Sunny	23.2	Dark brown	Faint earth	Loamy	14	66	80	0.08	Brownish gray	Faint earth	Loamy	90	280	370	0.08		
			Hinumamae River	Nagaoka Bridge	Ibaraki Town	2015/8/26	Cloudy	21.6	Blackish brown	Faint earth	Loamy	34	130	164	0.07	Grayish yellowish brown	Faint earth	Loamy	76	310	386	0.08		
						2015/11/12	Cloudy	14.0	Blackish brown	Faint earth	Loamy	25	150	175	0.07	Blackish brown	Faint earth	Loamy	57	280	337	0.09		
						2016/2/17	Sunny	8.0	Dark brown	Faint earth	Loamy	20	130	150	0.06	Grayish yellowish brown	Faint earth	Loamy	49	240	289	0.07		
Hinuma River		Takahashi	Ibaraki Town	2015/5/27	Sunny	21.0	Brown	Faint earth	Loamy	12	49	61	0.06	Dark brown	Faint earth	Loamy	86	300	386	0.08				
				2015/8/27	Cloudy	26.2	Dark brown	Faint earth	Loamy	<7.1	16	16	0.06	Dark brown	Faint earth	Loamy	13	55	68	0.07				
				2015/11/12	Cloudy	14.5	Dim yellowish brown	Faint earth	Loamy	<7.2	14	14	0.07	Dark brown	Faint earth	Loamy	19	58	77	0.06				
16		Hinumagawa River Area	Kansei River	Kansei Bridge	Ibaraki Town	2016/2/17	Sunny	11.0	Dark brown	Faint earth	Loamy	3.8	14	17.8	0.07	Dark brown	Faint earth	Loamy	18	94	112	0.07		
						2015/5/27	Sunny	21.7	Blackish brown	Faint earth	Loamy	83	270	353	0.07	Blackish brown	Faint earth	Loamy	150	550	700	0.09		
						2015/8/11	Sunny	31.2	Blackish brown	Faint earth	Loamy	110	430	540	0.07	Blackish brown	Faint earth	Loamy	100	470	570	0.12		
17	Hinumagawa River Area		Daiya River	Oya Bridge	Hokota City	2015/11/12	Sunny	15.0	Blackish brown	Faint earth	Loamy	90	380	470	0.06	Blackish brown	Faint earth	Loamy	84	380	464	0.10		
						2016/2/9	Sunny	12.3	Blackish brown	Faint earth	Loamy	96	430	526	0.06	Blackish brown	Faint earth	Loamy	78	380	458	0.08		
						2015/5/15	Sunny	23.5	-	-	-	-	-	-	0.07	-	-	-	-	-	-	0.08	Soil not exposed	
2015/8/11		Cloudy	28.9	-	-	-	-	-	-	0.07	-	-	-	-	-	-	-	0.08	Soil not exposed					
2015/11/10		Cloudy	17.8	-	-	-	-	-	-	0.08	-	-	-	-	-	-	-	0.08	Soil not exposed					
2016/2/9		Sunny	10.6	-	-	-	-	-	-	0.07	-	-	-	-	-	-	-	0.07	Soil not exposed					
18	Hinumagawa River Area	Hinuma River	Hinuma Bridge	Mito City/ Oarai Town	2015/5/17	Sunny	19.0	Blackish brown	Faint earth	Loamy	88	370	458	0.08	Dark brown	Faint earth	Loamy	330	1,200	1,530	0.10			
					2015/8/26	Cloudy	24.0	Blackish brown	Faint earth	Loamy	140	560	700	0.08	Dark brown	Faint earth	Loamy	110	450	560	0.11			
					2015/11/10	Cloudy	18.0	Blackish brown	Faint earth	Loamy	180	820	1,000	0.10	Dark brown	Faint earth	Loamy	120	570	690	0.11			
		19	Tonegawa River System	Hokota River	Asahi Bridge	Hokota City	2016/2/8	Sunny	5.8	Blackish brown	Faint earth	Loamy	150	670	820	0.09	Dark brown	Faint earth	Loamy	100	450	550	0.11	
							2015/5/27	Sunny	24.1	-	-	-	-	-	-	0.08	-	-	-	-	-	-	0.07	Soil not exposed
							2015/8/27	Cloudy	25.1	-	-	-	-	-	-	0.09	-	-	-	-	-	-	0.08	Soil not exposed
2015/11/6	Sunny	21.3		-	-	-	-	-	-	0.09	-	-	-	-	-	-	0.08	Soil not exposed						
2016/2/17	Sunny	10.0		-	-	-	-	-	-	0.08	-	-	-	-	-	-	-	0.08	Soil not exposed					
2015/5/27	Sunny	22.7		Olive gray	Faint earth	Loamy	9.8	37	46.8	0.05	Dim yellowish brown	Faint earth	Loamy	62	250	312	0.08							
20	Tonegawa River System	Tomoe River	Shintomogawa Bridge	Hokota City	2015/8/27	Cloudy	25.5	Yellowish brown	Faint earth	Loamy	4.7	14	18.7	0.06	Dim yellowish brown	Faint earth	Loamy	47	180	227	0.07			
					2015/11/6	Sunny	21.2	Dim yellowish brown	Faint earth	Loamy	26	130	156	0.05	Dim yellowish brown	Faint earth	Loamy	75	350	425	0.08			
					2016/2/17	Sunny	12.5	Extremely dark reddish brown	Faint earth	Loamy	80	410	490	0.07	Dim yellowish brown	Faint earth	Loamy	35	170	205	0.08			
		Taiyo River	Tazuka Bridge	Hokota City	2015/5/26	Sunny	30.1	Brown	Faint earth	Loamy	190	700	890	0.08	Brown	Faint earth	Loamy	60	220	280	0.06			
					2015/8/27	Cloudy	22.0	Black	Faint earth	Loamy	170	660	830	0.09	Black	Faint earth	Loamy	110	460	570	0.08			
					2015/11/6	Sunny	16.0	Dark brown	Faint earth	Loamy	130	480	610	0.09	Dark brown	Faint earth	Loamy	85	380	465	0.07			
21	Tonegawa River System	Taiyo River	Tazuka Bridge	Hokota City	2016/2/17	Sunny	9.5	Brown	Faint earth	Loamy	64	370	434	0.08	Brown	Faint earth	Loamy	75	300	375	0.07			
					2015/5/26	Sunny	22.7	Dark brown	Faint earth	Loamy	180	730	910	0.08	Dim yellowish brown	Faint earth	Loamy	160	610	770	0.08			
					2015/8/27	Cloudy	24.0	Blackish brown	Faint earth	Loamy	92	390	482	0.09	Blackish brown	Faint earth	Loamy	140	550	690	0.09			
		Takeda River	Uchijuku-obashi Bridge	Namegata City	2015/11/6	Sunny	15.9	Dark brown	Faint earth	Loamy	280	1,200	1,480	0.08	Dark brown	Faint earth	Loamy	140	540	680	0.10			
					2016/2/18	Cloudy	7.3	Dark brown	Faint earth	Loamy	130	560	690	0.08	Blackish brown	Faint earth	Loamy	110	500	610	0.10			
					2015/5/26	Sunny	27.3	Dim yellowish brown	Faint earth	Loamy	54	210	264	0.07	Brown	Faint earth	Loamy	330	1,200	1,530	0.07			
22	Tonegawa River System	Yamada River	Nioroshi Bridge	Namegata City	2015/8/27	Cloudy	25.0	Dark brown	Faint earth	Loamy	39	150	189	0.08	Blackish brown	Faint earth	Loamy	280	1,100	1,380	0.08			
					2015/11/20	Cloudy	13.3	Brown	Faint earth	Loamy	35	210	245	0.07	Dark brown	Faint earth	Loamy	100	450	550	0.08			
					2016/2/18	Sunny	4.0	Dim yellowish brown	Faint earth	Loamy	46	290	336	0.07	Dark brown	Faint earth	Loamy	48	240	288	0.08			
		Kurakawa River	Kurakawa Bridge	Namegata City	2015/5/26	Sunny	28.6	Dark brown	Faint earth	Loamy	88	320	408	0.08	Dark brown	Faint earth	Loamy	180	650	830	0.08			
					2015/8/28	Cloudy	21.1	Blackish brown	Faint earth	Loamy	160	580	740	0.08	Blackish brown	Faint earth	Loamy	250	940	1,190	0.09			
					2015/11/21	Sunny	11.8	Dark brown	Faint earth	Loamy	110	520	630	0.07	Dark brown	Faint earth	Loamy	220	1,000	1,220	0.08			
23	Tonegawa River System	Gantsu River	JA Yokohashi Bridge	Namegata City	2016/2/19	Sunny	8.5	Dark brown	Faint earth	Loamy	84	490	574	0.08	Dark brown	Faint earth	Loamy	140	660	800	0.08			
					2015/6/3	Cloudy	21.6	Dark brown	Faint earth	Loamy	160	670	830	0.08	Dark brown	Faint earth	Loamy	160	530	690	0.09			
					2015/8/28	Rain	21.2	Blackish brown	Faint earth	Loamy	210	910	1,120	0.08	Blackish brown	Faint earth	Loamy	160	650	810	0.08			
		24	Tonegawa River System	Gantsu River	JA Yokohashi Bridge	Namegata City	2015/11/21	Sunny	14.5	Dark brown	Faint earth	Loamy	160	630	790	0.09	Dark brown	Faint earth	Loamy	71	320	391	0.08	
							2016/2/19	Sunny	6.5	Dark brown	Faint earth	Loamy	150	690	840	0.08	Dark brown	Faint earth	Loamy	110	530	640	0.08	

Ibaraki Rivers (Surrounding Environment) 4/5

No.	Location				Sampling Date	Weather	Air temperature (°C)	Surrounding Environment(Soil,Air dose)											Remarks		
	Water area	Location	Municipality	Left bank					Right bank												
				Color				Odor	Property	Activity concentration [Bq/kg(dry)]			Air Dose (µSv/h)	Color	Odor	Property	Activity concentration [Bq/kg(dry)]			Air Dose (µSv/h)	
										Radioactive cesium							Radioactive cesium				
Cs-134	Cs-137	Total	Cs-134	Cs-137	Total																
39	Kasumigaura River Area	Onogawa River	Okuhara-ohashi Bridge	Ryugasaki City/ Ushiku City	2015/5/23	Sunny	25.7	Dark brown	Faint earth	Loamy	74	320	394	0.11	Dim yellowish brown	Faint earth	Loamy	97	360	457	0.12
					2015/8/12	Cloudy	28.5	Dark brown	Faint earth	Loamy	120	440	560	0.08	Blackish brown	Faint earth	Loamy	82	300	382	0.11
					2015/11/28	Sunny	16.5	Blackish brown	Faint earth	Loamy	26	140	166	0.09	Blackish brown	Faint earth	Loamy	11	57	68	0.11
40	Shintone River	Shintone Bridge	Inashiki City	Inashiki City	2016/2/11	Sunny	10.2	Blackish brown	Faint earth	Loamy	66	310	376	0.11	Grayish yellowish brown	Faint earth	Loamy	9.8	40	49.8	0.11
					2015/6/5	Cloudy	20.2	Blackish brown	Faint earth	Loamy	120	400	520	0.08	Blackish brown	Faint earth	Loamy	98	360	458	0.07
					2015/8/28	Cloudy	21.0	Blackish brown	Faint earth	Loamy	180	760	940	0.08	Blackish brown	Faint earth	Loamy	310	1,200	1,510	0.09
41	Hitachinonegawa River Area	Yorokoshi River	Horinouchi Bridge	Inako City	2015/11/21	Cloudy	15.5	Blackish brown	Faint earth	Loamy	54	260	314	0.07	Blackish brown	Faint earth	Loamy	230	1,100	1,330	0.08
					2016/2/11	Sunny	8.8	Blackish brown	Faint earth	Loamy	68	330	398	0.07	Dark brown	Faint earth	Loamy	130	600	730	0.08
					2015/6/5	Cloudy	24.0	Dark brown	Faint earth	Loamy	61	250	311	0.07	Dark brown	Faint earth	Loamy	59	250	309	0.07
42	Mackawa River	Ayame Bridge	Ayame Bridge	Inako City	2015/8/28	Rain	22.0	Blackish brown	Faint earth	Loamy	120	440	560	0.07	Blackish brown	Faint earth	Loamy	95	420	515	0.07
					2015/11/21	Sunny	12.8	Dark brown	Faint earth	Loamy	50	210	260	0.07	Blackish brown	Faint earth	Loamy	74	330	404	0.07
					2016/2/11	Sunny	6.5	Dark brown	Faint earth	Loamy	60	300	360	0.07	Dark brown	Faint earth	Loamy	59	230	289	0.06
43	Kinugawa River Area	Kimugawa River	Kawashima Bridge	Chikusai City	2015/5/29	Cloudy	22.5	Brown	Faint earth	Loamy	23	93	116	0.05	Dim reddish brown	Faint earth	Sandy	24	110	134	0.05
					2015/8/29	Cloudy	22.2	Dark brown	Faint earth	Loamy	21	110	131	0.04	Dim yellowish brown	Faint earth	Loamy	34	170	204	0.04
					2015/11/13	Cloudy	15.5	Brown	Faint earth	Loamy	16	85	101	0.06	Dim yellowish brown	Faint earth	Loamy	33	130	163	0.05
44	Kinugawa River Area	Kimugawa River	Takishita Bridge	Moriya City	2016/2/16	Sunny	7.8	Brown	Faint earth	Loamy	19	97	116	0.05	Dim yellowish brown	Faint earth	Sandy	28	170	198	0.05
					2015/5/28	Sunny	23.5	Blackish brown	Faint earth	Loamy	21	86	107	0.07	Dark brown	Faint earth	Loamy	25	100	125	0.07
					2015/8/10	Sunny	28.8	Brownish gray	None	Loamy	49	190	239	0.08	Blackish brown	Faint earth	Loamy	29	110	139	0.06
45	Tagawa River	Tagawa Bridge	Tagawa Bridge	Chikusai City	2015/11/24	Sunny	17.3	Blackish brown	Faint earth	Loamy	41	160	201	0.07	Dark brown	Faint earth	Loamy	17	61	78	0.07
					2016/2/22	Cloudy	9.2	Blackish brown	Faint earth	Loamy	32	150	182	0.07	Dark brown	Faint earth	Loamy	21	89	110	0.07
					2015/5/22	Sunny	24.5	Blackish brown	Faint earth	Loamy	170	670	840	0.11	Dark brown	Faint earth	Loamy	120	420	540	0.16
46	Kokai River	Kuroko Bridge	Kuroko Bridge	Chikusai City	2015/8/11	Cloudy	29.0	Dim yellowish brown	Faint earth	Loamy	180	770	950	0.11	Dark brown	Faint earth	Loamy	220	830	1,050	0.11
					2015/11/27	Sunny	8.8	Blackish brown	Faint earth	Loamy	69	300	369	0.09	Blackish brown	Faint earth	Loamy	6.8	35	41.8	0.07
					2016/2/23	Cloudy	5.0	Blackish brown	Faint earth	Loamy	200	1,000	1,200	0.08	Brownish gray	Faint earth	Sandy	<4.4	29	29	0.07
47	Fumimaki Bridge	Fumimaki Bridge	Toride City	Toride City	2015/5/28	Cloudy	21.9	Blackish brown	Faint earth	Loamy	48	200	248	0.06	Dark brown	Faint earth	Loamy	10	35	45	0.07
					2015/8/10	Sunny	31.5	Dark brown	Faint earth	Loamy	39	180	219	0.06	Dark brown	Faint earth	Loamy	<8.9	35	35	0.06
					2015/11/24	Cloudy	16.2	Blackish brown	Faint earth	Loamy	27	170	197	0.06	Dark brown	Faint earth	Loamy	<5.5	14	14	0.07
48	Yatagawa River	Maruyama Bridge	Maruyama Bridge	Toride City	2016/2/22	Sunny	11.0	Blackish brown	Faint earth	Loamy	17	92	109	0.06	Dark brown	Faint earth	Loamy	8.7	50	58.7	0.06
					2015/5/28	Sunny	27.0	Brown	Faint earth	Loamy	24	95	119	0.07	Dark brown	Faint earth	Loamy	67	220	287	0.07
					2015/8/11	Sunny	29.2	Brown	Faint earth	Loamy	32	130	162	0.07	Dark brown	Faint earth	Loamy	68	230	298	0.08
49	Nishiyata River	Sakaimatsu Bridge	Sakaimatsu Bridge	Tsukuba City	2015/11/24	Sunny	16.5	Dim yellowish brown	Faint earth	Loamy	21	120	141	0.07	Dark brown	Faint earth	Loamy	52	200	252	0.06
					2016/2/22	Cloudy	8.8	Dark brown	Faint earth	Loamy	16	80	96	0.06	Dark brown	Faint earth	Loamy	35	130	165	0.07
					2015/5/23	Sunny	25.2	Blackish brown	Faint earth	Loamy	250	1,000	1,250	0.11	Dark brown	Faint earth	Loamy	75	330	405	0.09
50	Inari River	Oguki Bridge	Oguki Bridge	Tsukuba City	2015/8/12	Sunny	35.0	Dim yellowish brown	Faint earth	Loamy	690	2,600	3,290	0.09	Dim yellowish brown	Faint earth	Loamy	110	470	580	0.09
					2015/11/28	Sunny	13.3	Blackish brown	Faint earth	Loamy	49	250	299	0.08	Dark brown	Faint earth	Loamy	120	480	600	0.09
					2016/2/11	Sunny	9.0	Blackish brown	Faint earth	Loamy	100	440	540	0.08	Dark brown	Faint earth	Loamy	100	380	480	0.08
50	Inari River	Oguki Bridge	Oguki Bridge	Tsukuba City	2015/5/22	Sunny	25.1	Blackish brown	Faint earth	Loamy	160	610	770	0.08	Dark brown	Faint earth	Loamy	310	1,100	1,410	0.09
					2015/8/11	Cloudy	34.0	Grayish yellowish brown	Faint earth	Loamy	280	970	1,250	0.09	Grayish yellowish brown	Faint earth	Loamy	240	1,100	1,340	0.08
					2015/11/27	Sunny	12.1	Blackish brown	Faint earth	Loamy	100	520	620	0.09	Dark brown	Faint earth	Loamy	160	700	860	0.10
50	Inari River	Oguki Bridge	Oguki Bridge	Tsukuba City	2016/2/23	Cloudy	9.0	Blackish brown	Faint earth	Loamy	140	720	860	0.10	Dark brown	Faint earth	Loamy	130	580	710	0.08
					2015/5/22	Cloudy	23.5	Dark brown	Faint earth	Loamy	<9.1	<8.1	-	0.05	Blackish brown	Faint earth	Loamy	21	79	100	0.06
					2015/8/11	Cloudy	34.0	Grayish yellowish brown	Faint earth	Loamy	6.7	31	37.7	0.06	Grayish yellowish brown	Faint earth	Loamy	26	82	108	0.05
50	Inari River	Oguki Bridge	Oguki Bridge	Tsukuba City	2015/11/27	Sunny	10.3	Blackish brown	Faint earth	Loamy	<5.5	12	12	0.07	Blackish brown	Faint earth	Loamy	17	100	117	0.07
					2015/2/23	Cloudy	7.8	Blackish brown	Faint earth	Loamy	<7.0	21	21	0.05	Blackish brown	Faint earth	Loamy	15	110	125	0.07
					2015/5/23	Cloudy	25.5	Dim yellowish brown	Faint earth	Loamy	260	1,000	1,260	0.11	Blackish brown	Faint earth	Loamy	380	1,400	1,780	0.13
50	Inari River	Oguki Bridge	Oguki Bridge	Tsukuba City	2015/8/11	Cloudy	34.0	Dim yellowish brown	Faint earth	Loamy	290	1,200	1,490	0.09	Dim yellowish brown	Faint earth	Loamy	170	630	800	0.13
					2015/11/27	Sunny	15.2	Dark brown	Faint earth	Loamy	180	730	910	0.10	Blackish brown	Faint earth	Loamy	130	670	800	0.12
50	Inari River	Oguki Bridge	Oguki Bridge	Tsukuba City	2016/2/23	Cloudy	8.0	Blackish brown	Faint earth	Loamy	200	900	1,100	0.09	Blackish brown	Faint earth	Loamy	160	860	1,020	0.11

Ibaraki Rivers (Surrounding Environment) 5/5

Rivers	Location				Sampling Date	Weather	Air temperature (°C)	Surrounding Environment(Soil,Air,dose)													Remarks		
	No.	Water area		Location				Municipality	Left bank				Right bank										
									Color	Odor	Property	Activity concentration [Bq/kg(dry)]			Air Dose (µSv/h)	Color	Odor	Property	Activity concentration [Bq/kg(dry)]				
												Radioactive cesium							Radioactive cesium				
			Cs-134	Cs-137	Total				Cs-134	Cs-137	Total	Air Dose (µSv/h)											
51	Tonegawa River System	Tonegawa River Area	Tonegawa River	Kurihashi Bridge	Koga City	2015/5/28	Sunny	27.0	Grayish yellowish brown	Faint earth	Loamy	12	49	61	0.06	Dark brown	Faint earth	Loamy	51	170	221	0.07	
						2015/8/10	Cloudy	29.1	Grayish brown	Faint earth	Loamy	29	150	179	0.08	Dark brown	Faint earth	Loamy	49	200	249	0.06	
						2015/11/24	Cloudy	16.3	Blackish brown	Faint earth	Loamy	16	57	73	0.06	Dark brown	Faint earth	Loamy	30	130	160	0.07	
				2016/2/22	Cloudy	7.8	Blackish brown	Faint earth	Loamy	7.2	56	63.2	0.07	Dark brown	Faint earth	Loamy	27	150	177	0.07			
				2015/5/22	Sunny	28.5	Dark brown	Faint earth	Loamy	270	990	1,260	0.11	Dim yellowish brown	Faint earth	Loamy	22	85	107	0.08			
				2015/8/12	Sunny	34.0	Dim yellowish brown	Faint earth	Loamy	180	640	820	0.12	Dim yellowish brown	Faint earth	Loamy	20	110	130	0.07			
	52	Tonegawa River System	Tonegawa River Area	Tonegawa River	Fukawa	Tone Town	2015/11/21	Cloudy	16.0	Dark brown	Faint earth	Loamy	150	690	840	0.12	Grayish yellowish brown	Faint earth	Sandy	7.9	45	52.9	0.06
							2016/2/11	Sunny	7.0	Dark brown	Faint earth	Loamy	200	860	1,060	0.13	Grayish yellowish brown	Faint earth	Sandy	<6.0	29	29	0.07
							2015/5/29	Cloudy	22.2	Brown	Faint earth	Loamy	41	170	211	0.05	Brown	Faint earth	Loamy	<8.9	20	20	0.06
							2015/8/28	Cloudy	23.2	Dark brown	Faint earth	Loamy	37	130	167	0.04	Dark brown	Faint earth	Loamy	5.6	23	28.6	0.05
							2015/11/13	Cloudy	16.5	Blackish brown	Faint earth	Clay-loamy	38	200	238	0.06	Dark brown	Faint earth	Loamy	9.0	36	45	0.06
							2016/2/19	Sunny	14.5	Blackish brown	None	Clay-loamy	19	130	149	0.05	Blackish brown	Faint earth	Loamy	11	46	57	0.05
53	Tonegawa River System	Tonegawa River Area	Tonegawa River	Sawara	Inashiki City	2015/5/28	Sunny	27.0	Grayish yellowish brown	Faint earth	Loamy	12	49	61	0.06	Dark brown	Faint earth	Loamy	51	170	221	0.07	
						2015/8/10	Cloudy	29.1	Grayish brown	Faint earth	Loamy	29	150	179	0.08	Dark brown	Faint earth	Loamy	49	200	249	0.06	
						2015/11/24	Cloudy	16.3	Blackish brown	Faint earth	Loamy	16	57	73	0.06	Dark brown	Faint earth	Loamy	30	130	160	0.07	

Ibaraki Lakes and Reservoirs (Water) 1/4

L a k e s a n d R e s e r v o i r s	Location			Sampling Date	Weather	Air temperature (°C)	Water depth (m)	Water							Remarks				
	No.	Water area	Location					General items				Activity concentration(Bq/L)							
								Water temperature (°C)	Sampling depth (m)	Color	Odor	Secchi disk depth (m)	Electrical conductivity (mS/m)	SS (mg/L)		Turbidity (FNU)	Cs-134	Cs-137	
54	Hiroura	Surface layer	2015/5/15	Sunny	19.8	2.3	22.6	0.5	Dark grayish yellow	None	0.7	1,410	18	21	<-0.82	<-0.80			
		Deep layer					22.6	1.3	-	None		1,420	14	18	<-0.85	<-0.75			
		Surface layer	2015/8/11	Cloudy	29.0	2.3	29.7	0.5	Dark grayish yellow green	None	1.3	1,490	3	2.1	<-0.51	<-0.63			
		Deep layer					29.5	1.3	-	None		1,480	3	2.1	<-0.74	<-0.61			
		Surface layer	2015/11/20	Cloudy	14.8	2.5	14.9	0.5	Light grayish yellow	None	0.8	588	11	10	<-0.63	<-0.80			
		Deep layer					14.9	1.5	-	None		616	13	10	<-0.48	<-0.84			
		Surface layer	2016/2/9	Sunny	6.5	2.5	5.1	0.5	Dark grayish yellow green	None	>2.5	1,420	<1	1.3	<-0.69	<-0.75			
		Deep layer					5.2	1.5	-	None		1,460	<1	1.3	<-0.72	<-0.88			
		55	Hinuma	Miyamae	Surface layer	2015/5/15	Sunny	20.3	2.8	22.7	0.5	Dark grayish yellow	None	0.6	1,410	19	19	<-0.83	<-0.66
					Deep layer					22.6	1.8	-	None		1,410	13	18	<-0.89	<-0.55
					Surface layer	2015/8/11	Sunny	28.5	2.9	30.2	0.5	Dark grayish yellow green	None	1.3	1,350	4	2.1	<-0.83	<-0.69
				Deep layer					29.5	1.9	-	None		1,370	3	1.8	<-0.61	<-0.61	
	Surface layer			2015/11/20	Cloudy	14.0	3.0	14.6	0.5	Light grayish yellow	None	0.8	305	9	7.3	<-0.98	<-0.88		
	Deep layer							14.9	2.0	-	None		591	11	9.3	<-0.75	<-0.92		
	Oyazawa		Surface layer	2016/2/9	Sunny	7.5	3.2	5.8	0.5	Dark grayish yellow green	None	2.2	1,330	<1	1.4	<-0.95	<-0.69		
			Deep layer					5.9	2.2	-	None		1,620	<1	1.4	<-0.65	<-0.84		
			Surface layer	2015/5/15	Sunny	22.0	2.0	22.6	0.5	Dark grayish yellow	None	0.6	1,350	20	20	<-0.68	<-0.88		
			Deep layer					22.5	1.0	-	None		1,330	20	20	<-0.87	<-0.70		
			Surface layer	2015/8/11	Cloudy	29.5	2.1	30.9	0.5	Dark grayish yellow green	None	0.7	970	7	6.3	<-0.72	<-0.69		
			Deep layer					30.2	1.1	-	None		962	10	7.0	<-0.77	<-0.70		
	57	Offshore of Tamatsukuri	Surface layer	2015/5/20	Sunny	22.9	6.9	22.4	0.5	Yellow greenish black	None	0.5	29.9	16	9.8	<-0.62	<-0.63		
			Deep layer					21.5	5.9	-	None		30.3	31	18	<-0.66	<-0.88		
			Surface layer	2015/9/4	Cloudy	25.7	6.4	24.7	0.5	Dark grayish yellow green	None	0.9	30.1	10	6.2	<-0.80	<-0.80		
			Deep layer					24.4	5.4	-	None		30.0	14	9.3	<-0.74	<-0.66		
Surface layer			2015/11/30	Cloudy	10.9	6.6	11.8	0.5	Grayish yellow green	None	0.9	28.3	13	11	<-0.65	<-0.75			
Deep layer							11.8	5.6	-	None		27.0	17	13	<-0.80	<-0.80			
Offshore of Kakeuma		Surface layer	2016/2/16	Sunny	1.1	6.9	8.4	0.5	Grayish yellow	None	0.7	30.6	13	9.5	<-0.72	<-0.88			
		Deep layer					8.0	5.9	-	None		27.6	16	12	<-0.76	<-0.75			
		Surface layer	2015/5/21	Sunny	19.2	2.1	23.5	0.5	Dark grayish yellow green	None	0.8	27.6	15	11	<-0.72	<-0.69			
		Deep layer					23.0	1.1	-	None		25.4	17	11	<-0.57	<-0.74			
		Surface layer	2015/9/4	Cloudy	26.0	2.2	24.6	0.5	Dark grayish yellow green	None	0.9	30.0	10	9.7	<-0.66	<-0.92			
		Deep layer					24.6	1.2	-	None		29.8	9	10	<-0.77	<-0.74			
58	Lake Kasumigaura	Offshore of Kakeuma	Surface layer	2015/11/30	Cloudy	10.9	2.0	11.2	0.5	Grayish greenish yellow	None	0.9	26.2	18	15	<-0.61	<-0.80		
			Deep layer					11.2	1.0	-	None		26.2	17	15	<-0.70	<-0.80		
			Surface layer	2016/2/16	Sunny	0.0	2.1	8.1	0.5	Grayish yellow	None	0.9	30.5	13	10	<-0.65	<-0.92		
	Center	Surface layer	2015/5/21	Sunny	20.1	6.2	23.9	0.5	Dark grayish yellow green	None	0.8	27.1	12	10	<-0.88	<-0.69			
		Deep layer					21.9	5.2	-	None		26.0	16	13	<-0.79	<-0.61			
		Surface layer	2015/9/4	Cloudy	25.2	6.1	24.1	0.5	Dark grayish yellow green	None	0.9	30.6	16	13	<-0.76	<-0.63			
59	Center	Center	Surface layer	2015/11/30	Cloudy	10.8	6.3	11.9	0.5	Grayish greenish yellow	None	0.9	27.3	14	13	<-0.83	<-0.75		
			Deep layer					11.8	5.3	-	None		27.0	17	13	<-0.58	<-0.63		
			Surface layer	2016/2/16	Sunny	1.8	6.5	7.4	0.5	Grayish yellow	None	0.8	32.1	12	9.3	<-0.74	<-0.75		
	Center	Surface layer					7.7	5.5	-	None		28.8	14	9.7	<-0.81	<-0.84			

Ibaraki Lakes and Reservoirs (Water) 2/4

No.	Location		Sampling Date	Weather	Air temperature (°C)	Water depth (m)	Water										Remarks	
	Water area	Location					General items							Activity concentration(Bq/L)				
							Water temperature (°C)	Sampling depth (m)	Color	Odor	Secchi disk depth (m)	Electrical conductivity (mS/m)	SS (mg/L)	Turbidity (FNU)	Cs-134	Cs-137		
60	Lake Kasumigaura	Offshore of Aso	Surface layer	2015/5/21	Sunny	21.2	2.4	23.9	0.5	Yellow greenish dark gray	None	0.9	33.6	12	8.4	<-0.74	<-0.80	
			Deep layer											32.3	15	9.1	<-0.62	<-0.66
			Surface layer	2015/9/4	Cloudy	26.0	2.3	24.8	0.5	Dark grayish greenish yellow	None	0.9	32.7	11	9.0	<-0.84	<-0.55	
			Deep layer											32.6	11	9.8	<-0.70	<-0.48
			Surface layer	2015/11/30	Cloudy	11.3	2.2	11.9	0.5	Grayish greenish yellow	None	0.9	30.2	10	8.1	<-0.82	<-0.84	
			Deep layer											30.5	10	8.2	<-0.83	<-0.84
	Surface layer	2016/2/16	Sunny	3.0	2.5	9.3	0.5	Grayish yellow	None	0.7	38.6	15	11	<-0.51	<-0.88			
	Deep layer											32.6	16	13	<-0.84	<-0.92		
	61	Lake Kitaura	Offshore of Kamaya	Surface layer	2015/5/20	Sunny	21.0	7.0	21.2	0.5	Greenish yellowish dark gray	None	0.9	27.2	11	6.2	<-0.83	<-0.80
				Deep layer											20.7	16	7.8	<-0.73
				Surface layer	2015/9/4	Sunny	28.4	6.8	25.3	0.5	Dark grayish yellow green	None	0.8	29.0	8	6.0	<-0.72	<-0.80
				Deep layer											24.4	5.8	8.2	<-0.65
Surface layer				2015/11/30	Sunny	13.9	6.7	12.8	0.5	Dark grayish greenish yellow	None	0.9	27.2	12	8.1	<-0.80	<-0.96	
Deep layer														12.8	5.7	10	<-0.78	<-0.92
Surface layer		2016/2/16	Sunny	4.5	6.4	9.5	0.5	Grayish greenish yellow	None	1.0	31.7	11	9.6	<-0.63	<-0.84			
Deep layer												8.5	5.4	10	<-0.65	<-0.96		
62		Lake Kitaura	Jingu Bridge	Surface layer	2015/5/20	Cloudy	22.0	2.7	22.0	0.5	Greenish yellowish dark gray	None	0.5	31.9	21	11	<-0.68	<-0.84
				Deep layer											21.6	1.7	9.8	<-0.76
				Surface layer	2015/9/4	Cloudy	28.8	2.6	25.7	0.5	Dark grayish greenish yellow	None	0.7	37.3	17	12	<-0.58	<-0.75
				Deep layer											25.5	1.6	12	<-0.66
	Surface layer			2015/11/30	Sunny	14.0	2.8	12.9	0.5	Dark grayish greenish yellow	None	0.8	30.8	30	23	<-0.61	<-0.80	
	Deep layer													12.5	1.8	24	<-0.65	<-0.75
	Surface layer	2016/2/16	Sunny	4.0	3.2	9.4	0.5	Grayish greenish yellow	None	0.7	37.3	20	16	<-0.63	<-0.80			
	Deep layer											9.4	2.2	17	<-0.86	<-0.69		
	63	Hitachitone River	Lake Sotonasakaura	Surface layer	2015/5/21	Sunny	22.0	2.6	24.0	0.5	Yellow greenish black	None	1.0	51.1	8	6.1	<-0.68	<-0.69
				Deep layer											22.5	1.6	7.4	<-0.57
				Surface layer	2015/9/4	Cloudy	29.7	2.5	25.6	0.5	Dark grayish yellow green	None	0.9	38.3	10	9.6	<-0.85	<-0.75
				Deep layer											25.3	1.5	9.0	<-0.71
Surface layer				2015/11/30	Sunny	14.0	2.5	13.0	0.5	Dark grayish yellow	None	0.9	36.5	18	14	<-0.81	<-0.88	
Deep layer														12.7	1.5	13	<-0.79	<-0.80
Surface layer		2016/2/16	Sunny	6.8	2.7	9.7	0.5	Grayish greenish yellow	None	0.9	43.4	9	6.4	<-0.70	<-0.69			
Deep layer												8.9	1.7	5.8	<-0.68	<-0.75		
64		Hitachitone River	Ikisu	Surface layer	2015/5/21	Sunny	22.8	5.2	24.0	0.5	Greenish yellowish black	None	1.3	45.3	5	3.7	<-0.85	<-0.88
				Deep layer											22.4	4.2	3.9	<-0.57
				Surface layer	2015/9/4	Sunny	29.0	5.0	25.3	0.5	Dark grayish greenish yellow	None	0.9	40.4	7	5.3	<-0.61	<-0.55
				Deep layer											24.5	4.0	5.6	<-0.72
	Surface layer			2015/11/30	Cloudy	12.1	4.9	12.7	0.5	Dark grayish yellow	None	0.9	39.3	14	10	<-0.67	<-0.75	
	Deep layer													12.4	3.9	10	<-0.63	<-0.75
	Surface layer	2016/2/16	Sunny	5.0	5.2	9.3	0.5	Grayish yellow	None	0.8	45.0	9	6.6	<-0.67	<-0.75			
	Deep layer											8.9	4.2	8.4	<-0.70	<-0.96		
	65	Lake Ushikunuma	Center of Lake Ushikunuma	Surface layer	2015/5/20	Sunny	22.1	1.8	22.6	0.0	Dark grayish green	None	0.5	24.2	29	13	<-0.94	<-0.75
				Deep layer											22.5	0.8	14	<-0.87
				Surface layer	2015/8/12	Cloudy	31.2	1.7	30.7	0.5	Grayish yellow green	None	0.4	20.7	29	18	<-0.61	<-0.80
				Deep layer											-	-	-	-
Surface layer				2015/11/28	Sunny	10.8	1.4	10.1	0.5	Grayish greenish yellow	None	1.0	22.9	9	6.3	<-0.61	<-0.63	
Deep layer														-	-	-	-	-
Surface layer		2016/2/11	Sunny	5.5	1.3	5.1	0.5	Grayish yellow	None	0.6	23.5	21	16	<-0.48	<-0.61			
Deep layer												-	-	-	-	-		

Collected only from the surface layer due to shallow water

Collected only from the surface layer due to shallow water

Collected only from the surface layer due to shallow water

Ibaraki Lakes and Reservoirs (Water) 4/4

L a k e s a n d R e s e r v o i r s	Location			Sampling Date	Weather	Air temperature (°C)	Water depth (m)	Water							Remarks		
	No.	Water area	Location					General items				Water				Activity concentration(Bq/L)	
								Water temperature (°C)	Sampling depth (m)	Color	Odor	Secchi disk depth (m)	Electrical conductivity (mS/m)	SS (mg/L)		Turbidity (FNU)	Radioactive cesium
71	Fujiigawa Dam	Center	Surface layer	2015/5/28	Sunny	24.0	13.0	23.4	0.5	Dark grayish bluish green	None	3.4	12.5	<1	0.6	<0.83	<0.84
			Deep layer					16.8	12.0	-	None		12.9	4	4.5	<0.60	<0.84
			Surface layer	2015/8/27	Cloudy	24.2	10.5	24.1	0.5	Grayish yellow green	None	1.8	15.6	3	2.1	<0.91	<0.84
			Deep layer					21.3	9.5	-	Medium hydrogen sulfide		17.0	18	12	<0.93	<0.61
			Surface layer	2015/11/11	Sunny	16.0	12.5	14.5	0.5	Dark grayish yellow green	None	1.1	14.2	1	0.7	<0.76	<0.55
			Deep layer					13.3	11.5	-	None		15.1	1	1.4	<0.78	<0.80
			Surface layer	2016/2/15	Cloudy	9.2	15.2	8.6	0.5	Dark grayish yellow green	None	1.8	13.1	2	1.6	<0.70	<0.80
			Deep layer					5.7	14.2	-	None		14.0	2	1.5	<0.65	<0.99
			Surface layer	2015/5/28	Cloudy	22.0	12.4	22.4	0.5	Dark grayish green	None	5.3	10.6	<1	0.5	<0.63	<0.61
			Deep layer					8.2	11.4	-	None		11.8	2	1.9	<0.87	<0.88
			Surface layer	2015/8/27	Cloudy	26.8	14.4	25.4	0.5	Dark grayish yellow green	None	4.8	8.6	<1	0.5	<0.68	<0.84
			Deep layer					9.3	13.4	-	Faint hydrogen sulfide		13.9	9	6.8	<0.95	<0.84
Surface layer	2015/11/11	Sunny	15.8	13.3	16.3	0.5	Dark grayish yellow green	None	7.9	8.5	<1	0.4	<0.73	<0.80			
Deep layer					9.2	12.3	-	Faint hydrogen sulfide		15.1	10	6.0	<0.82	<0.80			
Surface layer	2016/2/15	Rain	6.5	13.7	8.2	0.5	Dark grayish yellow green	None	3.5	9.8	1	1.5	<0.58	<0.75			
Deep layer					5.5	12.7	-	None		11.6	1	1.1	<0.48	<0.80			

Ibaraki Lakes and Reservoirs (Sediment) 1/2

Location			Sampling Date	Weather	Air temperature (°C)	Water depth (m)	Sediment													Activity concentration [Bq/kg dry]			Remarks				
							General items						Grain size distribution(%)							Sediment content (%)	Density (g/cm ³)	Property		Radioactive cesium			
No.	Water area	Location	Sediment temperature (°C)	Sample length (cm)	Color	Odor	Coarse gravel	Medium gravel	Fine gravel	Coarse sand	Medium sand	Fine sand	Silt	Clay	Cs-134	Cs-137	Total										
L a k e s a n d R e s e r v o i r s	54	Hiroura	2015/5/15	Sunny	19.8	2.3	19.8	8	Black	None	0.0	0.0	0.0	0.5	1.7	8.7	68.3	20.8	43.1	2.610	Silt	21	80	101			
			2015/8/11	Cloudy	29.0	2.3	27.0	5	Olive black	Faint sewage	0.0	0.0	0.0	0.4	1.7	13.4	69.8	14.8	39.8	2.591	Silt	18	81	99			
			2015/11/20	Cloudy	14.8	2.5	15.9	8	Olive black	None	0.0	0.2	0.4	0.4	1.8	10.6	72.0	14.6	41.7	2.638	Silt	19	76	95			
		55	Hinuma	Miyamae	2016/2/9	Sunny	6.5	2.5	7.0	6	Black	Faint sewage	0.0	0.2	0.4	0.4	2.1	12.6	69.9	14.4	42.0	2.637	Silt	19	80	99	
					2015/5/15	Sunny	20.3	2.8	19.0	9	Black	Faint hydrogen sulfide	0.0	0.0	0.0	0.0	0.9	5.5	68.7	24.9	26.1	2.594	Silt	19	61	80	
					2015/8/11	Sunny	28.5	2.9	27.2	7	Black	Faint hydrogen sulfide	0.0	0.0	0.0	0.1	0.7	10.7	66.3	22.3	22.7	2.505	Silt	28	100	128	
	56			Oyazawa	2015/11/20	Cloudy	14.0	3.0	16.0	11	Black	Medium hydrogen sulfide	0.0	0.0	0.0	0.0	0.5	4.3	72.4	22.8	21.0	2.596	Silt	26	120	146	
					2016/2/9	Sunny	7.5	3.2	9.0	10	Black	Faint hydrogen sulfide	0.0	0.0	0.0	0.2	0.6	8.2	63.9	27.1	19.8	2.597	Silt	12	49	61	
					2015/5/15	Sunny	22.0	2.0	20.1	10	Black	Faint sewage	0.0	0.0	0.0	0.0	0.3	3.0	68.6	28.0	32.8	2.514	Silt	110	360	470	
	57	Offshore of Tamatsukuri	2015/8/11	Cloudy	29.5	2.1	28.4	8	Black	Faint sewage	0.0	0.0	0.0	0.1	0.5	9.3	74.6	15.6	30.8	2.406	Silt	75	330	405			
			2015/11/20	Cloudy	14.0	2.2	16.5	10	Black	Faint sewage	0.0	0.0	0.0	0.0	0.4	4.6	69.7	25.4	30.8	2.564	Silt	85	380	465			
			2016/2/9	Sunny	7.5	2.0	8.0	5	Black	Faint sewage	0.0	0.0	0.0	0.1	1.1	8.9	71.2	18.7	33.4	2.568	Silt	67	300	367			
2015/5/20			Sunny	22.9	6.9	21.0	10	Olive black	Faint sewage	0.0	0.0	0.0	0.0	0.0	0.9	74.0	25.1	19.0	2.443	Silt	130	410	540				
2015/9/4			Cloudy	25.7	6.4	24.5	13	Dark olive gray	Faint sewage	0.0	0.0	0.0	0.1	0.3	0.8	74.2	24.6	18.7	2.452	Silt	100	430	530				
2015/11/30			Cloudy	10.9	6.6	14.9	9	Olive black	Faint hydrogen sulfide	0.0	0.0	0.0	0.1	1.0	15.4	66.5	17.0	18.0	2.457	Silt	79	360	439				
58			Lake Kasumigaura	Offshore of Kakeuma	2016/2/16	Sunny	1.1	6.9	8.0	5	Olive black	Faint hydrogen sulfide	0.0	0.0	0.0	0.2	0.5	8.7	74.0	16.6	17.8	2.440	Silt	61	400	461	
					2015/5/21	Sunny	19.2	2.1	22.3	5	Blackish brown	None	0.0	0.9	2.1	0.7	46.2	46.3	1.9	1.9	83.0	2.692	Sand	27	110	137	
					2015/9/4	Cloudy	26.0	2.2	24.8	2	Blackish brown	None	0.0	3.1	4.3	0.7	20.0	51.2	11.8	8.9	69.7	2.734	Sand	51	210	261	
				59	Center	2015/11/30	Cloudy	10.9	2.0	11.8	3	Blackish brown	None	0.0	0.1	0.3	1.1	55.0	41.0	1.8	0.7	78.4	2.717	Sand	22	110	132
						2016/2/16	Sunny	0.0	2.1	8.0	2	Blackish brown	None	0.0	0.0	0.3	0.7	47.3	47.2	3.8	0.7	71.6	2.718	Sand/silt	27	120	147
						2015/5/21	Sunny	20.1	6.2	21.2	11	Olive black	None	0.0	0.0	0.0	0.0	0.2	0.0	77.1	22.7	17.7	2.365	Silt	47	210	257
60	Offshore of Aso	2015/9/4	Cloudy	25.2	6.1	24.5	15	Olive black	Faint sewage	0.0	0.0	0.0	0.0	0.0	0.1	68.0	31.9	14.8	2.402	Silt	100	510	610				
		2015/11/30	Cloudy	10.8	6.3	14.8	9	Olive black	None	0.0	0.0	0.0	0.1	0.9	12.4	69.2	17.4	15.9	2.428	Silt	35	130	165				
		2016/2/16	Sunny	1.8	6.5	7.5	10	Olive black	Faint hydrogen sulfide	0.0	0.0	0.0	0.3	0.5	9.5	73.2	16.5	15.3	2.409	Silt	83	460	543				
		2015/5/21	Sunny	21.2	2.4	22.0	5	Olive black	None	0.0	0.0	0.0	0.0	3.1	88.3	4.6	3.9	83.0	2.713	Sand	20	88	108				
		2015/9/4	Cloudy	26.0	2.3	25.1	4	Olive black	None	0.0	0.0	0.0	0.1	2.8	86.1	6.2	4.9	75.2	2.725	Sand	21	100	121				
		2015/11/30	Cloudy	11.3	2.2	12.2	3	Olive black	None	0.0	0.0	0.1	0.1	28.1	70.3	0.7	0.7	76.3	2.720	Sand	33	100	133				
61	Offshore of Kamaya	2016/2/16	Sunny	3.0	2.5	8.5	3	Olive black	None	0.0	0.0	0.1	0.1	14.0	84.2	0.9	0.7	74.2	2.723	Sand	24	100	124				
		2015/5/20	Sunny	21.0	7.0	18.7	10	Black	None	0.0	0.0	0.0	0.4	0.5	0.6	76.0	22.5	14.8	2.369	Silt	30	170	200				
		2015/9/4	Sunny	28.4	6.8	24.5	14	Olive black	Faint sewage	0.0	0.0	0.0	0.0	0.2	0.9	70.7	28.3	14.4	2.339	Silt	75	330	405				
		2015/11/30	Sunny	13.9	6.7	14.5	10	Olive black	Faint hydrogen sulfide	0.0	0.0	0.0	0.4	9.5	10.2	44.1	35.8	14.0	2.274	Silt	87	340	427				
		2016/2/16	Sunny	4.5	6.4	8.3	8	Olive black	None	0.0	0.0	0.0	0.3	0.4	11.4	70.5	17.4	13.9	2.339	Silt	51	310	361				
		2015/5/20	Cloudy	22.0	2.7	20.7	5	Greenish black	Faint rotteness	0.0	0.0	0.0	0.0	2.1	67.8	18.1	12.0	60.3	2.666	Sand/silt	28	100	128				
		62	Jingu Bridge	2015/9/4	Cloudy	28.8	2.6	25.0	6	Olive black	Faint sewage	0.0	0.0	0.0	0.1	2.9	68.4	16.0	12.7	63.1	2.661	Silt/sand	21	81	102		
				2015/11/30	Sunny	14.0	2.8	13.8	7	Olive black	Faint hydrogen sulfide	0.0	0.0	0.0	0.2	23.0	63.1	9.7	4.0	58.3	2.645	Silt/sand	21	97	118		
				2016/2/16	Sunny	4.0	3.2	9.0	5	Olive black	None	0.0	0.0	0.0	0.7	11.0	75.1	9.9	3.3	63.0	2.654	Sand/silt	17	100	117		
				2015/5/21	Sunny	22.0	2.6	22.0	4	Olive black	Faint hydrogen sulfide	0.0	0.0	0.0	0.0	2.8	87.6	6.5	3.1	77.8	2.654	Sand/silt	18	76	94		
				2015/9/4	Cloudy	29.7	2.5	25.0	3	Olive black	Faint sewage	0.0	0.0	0.0	0.0	2.7	62.7	20.2	14.4	66.6	2.689	Sand/silt	17	72	89		
				2015/11/30	Sunny	14.0	2.5	12.8	7	Olive black	Faint sewage	0.0	0.0	0.1	0.1	12.2	74.0	9.7	4.0	67.4	2.666	Sand/silt	17	98	115		
63	Lake Sotonasskaura	2016/2/16	Sunny	6.8	2.7	8.0	4	Olive black	None	0.0	0.0	0.0	0.1	10.7	81.7	4.5	3.0	68.7	2.693	Sand/silt	14	67	81				
		2015/5/21	Sunny	22.8	5.2	21.9	4	Olive black	Faint hydrogen sulfide	0.0	0.0	0.0	0.2	6.6	86.2	2.1	4.9	77.3	2.680	Sand	17	74	91				
		2015/9/4	Sunny	29.0	5.0	24.8	3	Olive black	None	0.0	0.0	0.1	0.7	11.8	78.7	2.0	6.7	73.2	2.714	Sand	13	67	80				
		2015/11/30	Cloudy	12.1	4.9	13.0	3	Olive black	None	0.0	0.0	0.1	0.1	36.5	62.1	0.5	0.7	75.6	2.697	Sand	16	66	82				
		2016/2/16	Sunny	5.0	5.2	8.9	4	Olive black	Faint sewage	0.0	0.0	0.2	0.7	14.2	84.2	0.0	0.7	71.2	2.714	Sand/silt	18	73	91				
		2015/5/20	Sunny	22.1	1.8	22.4	8	Olive black	None	0.0	0.0	0.0	0.0	2.3	8.8	78.2	10.8	24.4	2.403	Silt	170	630	800				
64	Hitachitone River	Ikisu	2015/8/12	Cloudy	31.2	1.7	30.5	12	Olive black	Faint hydrogen sulfide	0.0	0.0	0.0	0.4	4.8	12.5	70.2	12.2	25.6	2.440	Silt/sand	120	550	670			
			2015/11/28	Sunny	10.8	1.4	12.2	8	Olive black	None	0.0	0.0	0.0	1.6	15.4	24.8	48.5	9.8	26.4	2.471	Silt	130	530	660			
			2016/2/11	Sunny	5.5	1.3	6.5	8	Olive black	None	0.0	0.0	0.2	0.7	4.4	11.9	73.1	9.7	25.6	2.472	Silt	85	480	565			
			2015/5/20	Sunny	22.1	1.8	22.4	8	Olive black	None	0.0	0.0	0.0	0.0	2.3	8.8	78.2	10.8	24.4	2.403	Silt	170	630	800			
65	Lake Ushikumama	Center of Lake Ushikumama	2015/8/12	Cloudy	31.2	1.7	30.5	12	Olive black	Faint hydrogen sulfide	0.0	0.0	0.0	0.4	4.8	12.5	70.2	12.2	25.6	2.440	Silt/sand	120	550	670			
			2015/11/28	Sunny	10.8	1.4	12.2	8	Olive black	None	0.0	0.0	0.0	1.6	15.4	24.8	48.5	9.8	26.4	2.471	Silt	130	530	660			
			2016/2/11	Sunny	5.5	1.3	6.5	8	Olive black	None	0.0	0.0	0.2	0.7	4.4	11.9	73.1	9.7	25.6	2.472	Silt	85	480	565			
			2015/5/20	Sunny	22.1	1.8	22.4	8	Olive black	None	0.0	0.0	0.0	0.0	2.3	8.8	78.2	10.8	24.4	2.403	Silt	170	630	800			

Ibaraki Lakes and Reservoirs (Sediment) 2/2

L a k e s R e s e r v o i r s	Location			Sampling Date	Weather	Air temperature (°C)	Water depth (m)	Sediment													Activity concentration [Bq/kg/dry]			Remarks				
	No.	Water area	Location					Sediment temperature (°C)	Sample length (cm)	Color	Odor	Grain size distribution(%)							Sediment content (%)	Density (g/cm ³)	Property	Radioactive cesium						
												Course gravel	Medium gravel	Fine gravel	Course sand	Medium sand	Fine sand	Silt				Clay	Cs-134		Cs-137	Total		
								0.0	0.0	0.0	1.6	1.0	2.3	57.3	37.7	16.9	2.283	Silt	590	1,900	2,490							
66	Mizunuma Dam	Center	2015/6/1	Sunny	24.3	15.9	14.7	5	Blackish brown	Faint sewage	0.0	0.0	0.0	1.6	1.0	2.3	57.3	37.7	16.9	2.283	Silt	590	1,900	2,490				
			2015/8/21	Cloudy	25.2	12.9	10.2	8	Blackish brown	Faint sewage	0.0	0.0	0.0	0.8	0.3	1.5	55.4	42.1	15.8	2.285	Silt	570	2,500	3,070				
			2015/11/6	Sunny	14.2	16.5	11.8	5	Blackish brown	Faint hydrogen sulfide	0.0	0.0	0.0	0.0	0.8	0.5	2.2	65.9	30.5	17.7	2.341	Silt	530	2,200	2,730			
			2016/2/3	Sunny	2.5	18.8	4.0	10	Blackish brown	Faint sewage	0.0	0.0	0.0	0.1	0.4	1.5	44.0	54.0	16.6	2.268	Silt	500	2,100	2,600				
			2015/6/2	Sunny	25.2	15.0	7.0	8	Blackish brown	Faint swamp	0.0	0.1	0.3	0.3	0.6	3.4	52.0	43.4	23.2	2.466	Silt	62	240	302				
			2015/8/21	Cloudy	24.5	15.0	7.5	8	Olive black	Faint sewage	0.0	0.0	0.0	1.2	1.9	4.8	49.4	42.8	32.6	2.543	Silt	200	880	1,080				
			2015/11/6	Sunny	17.8	15.5	9.0	8	Blackish brown	Faint hydrogen sulfide	0.0	0.0	0.0	0.1	0.1	1.8	47.5	50.6	25.0	2.524	Silt	150	730	880				
			2016/2/3	Sunny	4.5	15.7	4.8	10	Blackish brown	Faint sewage	0.0	0.0	0.0	0.2	0.8	6.3	42.6	50.1	21.4	2.423	Silt	190	800	990				
			2015/6/2	Sunny	28.0	22.6	6.9	8	Blackish brown	Faint swamp	0.0	0.0	0.0	0.0	0.0	2.7	64.1	33.2	24.9	2.424	Silt	310	1,100	1,410				
			2015/8/21	Cloudy	26.0	19.5	8.5	4	Dark brown	Faint sewage	0.0	0.0	0.0	0.8	0.5	3.1	55.2	40.4	23.0	2.377	Silt	450	1,600	2,050				
			2015/11/5	Sunny	19.1	17.5	15.2	5	Blackish brown	Faint sewage	0.0	0.0	0.0	0.2	0.1	1.3	54.7	43.6	24.5	2.409	Silt	390	1,600	1,990				
			2016/2/1	Sunny	3.8	27.3	4.8	5	Blackish brown	Faint sewage	0.0	0.0	0.0	1.1	0.7	1.0	48.6	48.7	19.4	2.312	Silt	210	1,100	1,310				
			2015/6/2	Cloudy	23.6	21.6	5.8	8	Black	Faint sewage	0.0	0.0	0.0	0.0	0.0	0.2	49.4	50.4	19.5	2.439	Silt	250	920	1,170				
			2015/8/20	Cloudy	25.0	20.7	8.0	12	Olive black	Faint sewage	0.0	0.0	0.0	0.1	0.0	0.4	49.8	49.7	17.2	2.474	Silt	240	1,100	1,340				
			2015/11/5	Sunny	14.3	21.8	7.1	8	Black	Faint hydrogen sulfide	0.0	0.6	1.2	0.2	0.4	0.8	47.7	49.2	17.4	2.477	Silt	56	290	346				
			2016/2/1	Cloudy	5.3	26.5	4.5	8	Black	Faint sewage	0.0	0.0	0.0	0.1	0.2	0.7	40.9	58.1	21.5	2.419	Silt	75	370	445				
			2015/6/1	Sunny	24.6	21.5	6.7	8	Olive black	Faint sewage	0.0	0.0	0.0	0.3	0.1	0.2	68.6	30.8	20.9	2.424	Silt	71	320	391				
			70	Ryujin Dam	Center	2015/8/25	Cloudy	23.0	20.4	9.5	6	Olive black	Faint swamp	0.0	0.0	0.0	2.8	2.5	4.2	64.3	26.2	19.0	2.253	Silt	89	380	469	
						2015/11/4	Sunny	14.0	20.1	11.0	5	Olive black	Faint hydrogen sulfide	0.0	0.0	0.0	1.0	0.6	0.5	59.6	38.3	20.4	2.418	Silt	180	700	880	
						2016/2/4	Sunny	1.1	29.0	4.5	4	Olive black	Faint sewage	0.0	0.0	0.0	1.6	1.5	0.9	51.2	44.7	14.9	2.274	Silt	110	500	610	
2015/5/28	Sunny	24.0				13.0	18.1	4	Blackish brown	Faint sewage	0.0	0.0	0.0	0.8	0.4	0.9	64.1	33.8	24.1	2.452	Silt	110	470	580				
71	Fujigawa Dam	Center	2015/8/27	Cloudy	24.2	10.5	-	-	-	-	-	-	-	-	-	-	-	-	-	-	-	-	-	-	- Unable to collect samples due to volume of plants,etc.			
			2015/11/11	Sunny	16.0	12.5	-	-	-	-	-	-	-	-	-	-	-	-	-	-	-	-	-	-	-	-	- Unable to collect samples due to volume of plants,etc.	
			2016/2/15	Cloudy	9.2	15.2	-	-	-	-	-	-	-	-	-	-	-	-	-	-	-	-	-	-	-	-	- Unable to collect samples due to volume of plants,etc.	
72	Iida Dam	Center	2015/5/28	Cloudy	22.0	12.4	8.2	7	Black	Faint sewage	0.0	3.5	0.8	1.7	2.6	3.7	58.6	29.1	20.6	2.500	Silt	35	130	165				
			2015/8/27	Cloudy	26.8	14.4	8.5	4	Black	Faint sewage	0.0	0.6	0.7	1.0	1.0	3.6	61.4	31.7	30.4	2.523	Silt	42	140	182				
			2015/11/11	Sunny	15.8	13.3	8.0	13	Black	Faint hydrogen sulfide	0.0	0.0	0.0	0.0	0.0	0.1	79.8	20.1	16.9	2.419	Silt	48	170	218				
			2016/2/15	Rain	6.5	13.7	5.8	5	Black	Faint sewage	0.0	1.1	0.4	2.3	4.1	6.7	68.2	17.3	22.0	2.424	Silt	36	210	246				

Ibaraki Lakes and Reservoirs (Surrounding Environment) 1/2

No.	Location		Sampling Date	Weather	Air temperature (°C)	Surrounding Environment (Soil, Air dose)						Remarks			
						Soil			Air Dose (μSv/h)						
	Color	Odor				Property	Radioactive cesium [Bq/kg(dry)]			Air Dose (μSv/h)					
							Cs-134	Cs-137	Total						
54	Hinuma	Hiroura	2015/5/15	Sunny	19.8	Brown	Faint earth	Loamy	190	650	840	0.12			
			2015/8/11	Cloudy	29.0	Dim yellowish brown	Faint earth	Loamy	410	1,600	2,010	0.13			
			2015/11/20	Cloudy	14.8	Dim yellowish brown	Faint earth	Loamy	200	880	1,080	0.12			
			2016/2/9	Sunny	6.5	Dim yellowish brown	Faint earth	Loamy	310	1,600	1,910	0.10			
		55	Miyamae	2015/5/15	Sunny	20.3	Brown	Faint earth	Loamy	9.8	30	39.8	0.07		
				2015/8/11	Sunny	28.5	Dim yellowish brown	Faint earth	Loamy	10	30	40	0.06		
				2015/11/20	Cloudy	14.0	Brown	Faint earth	Loamy	<5.5	26	26	0.07		
				2016/2/9	Sunny	7.5	Brown	Faint earth	Loamy	<8.4	19	19	0.06		
		56	Oyazawa	2015/5/15	Sunny	22.0	-	-	-	-	-	-	-	-	No sampling soil location
				2015/8/11	Cloudy	29.5	-	-	-	-	-	-	-	-	No sampling soil location
				2015/11/20	Cloudy	14.0	-	-	-	-	-	-	-	-	No sampling soil location
				2016/2/9	Sunny	7.5	-	-	-	-	-	-	-	-	No sampling soil location
57	Offshore of Tamatsukuri	2015/5/20	Sunny	22.9	Grayish olive	None	Sandy	10	36	46	0.07				
		2015/9/4	Cloudy	25.7	Olive	Faint grass	Sandy	8.4	45	53.4	0.07				
		2015/11/30	Cloudy	10.9	Grayish olive	None	Sandy	20	63	83	0.08				
		2016/2/16	Sunny	1.1	Olive black	None	Sandy	6.1	30	36.1	0.07				
58	Offshore of Kakeuma	2015/5/21	Sunny	19.2	Dark olive brown	Faint earth	Loamy	29	120	149	0.06				
		2015/9/4	Cloudy	26.0	Olive brown	Faint earth	Loamy	28	100	128	0.08				
		2015/11/30	Cloudy	10.9	Dark olive brown	Faint earth	Loamy	23	120	143	0.08				
		2016/2/16	Sunny	0.0	Dark olive brown	Faint earth	Loamy	16	70	86	0.07				
59	Center	2015/5/21	Sunny	20.1	-	-	-	-	-	-	-	-	No sampling soil location		
		2015/9/4	Cloudy	25.2	-	-	-	-	-	-	-	-	No sampling soil location		
		2015/11/30	Cloudy	10.8	-	-	-	-	-	-	-	-	No sampling soil location		
		2016/2/16	Sunny	1.8	-	-	-	-	-	-	-	-	No sampling soil location		
60	Offshore of Aso	2015/5/21	Sunny	21.2	Olive brown	Faint earth	Sandy	32	120	152	0.08				
		2015/9/4	Cloudy	26.0	Olive brown	Faint earth	Sandy	42	180	222	0.10				
		2015/11/30	Cloudy	11.3	Olive brown	Faint earth	Sandy	50	180	230	0.08				
		2016/2/16	Sunny	3.0	Dark grayish yellow	Faint earth	Sandy	60	270	330	0.08				
61	Offshore of Kamaya	2015/5/20	Sunny	21.0	Olive brown	Faint earth	Loamy	85	390	475	0.07				
		2015/9/4	Sunny	28.4	Dark grayish yellow	Faint earth	Loamy	120	550	670	0.07				
		2015/11/30	Sunny	13.9	Dark reddish brown	Faint earth	Loamy	220	1,000	1,220	0.07				
		2016/2/16	Sunny	4.5	Blackish brown	Faint earth	Loamy	180	910	1,090	0.07				
62	Jingu Bridge	2015/5/20	Cloudy	22.0	Brown	Faint earth	Loamy	6.1	28	34.1	0.04				
		2015/9/4	Cloudy	28.8	Brown	Faint earth	Loamy	5.8	31	36.8	0.04				
		2015/11/30	Sunny	14.0	Brown	Faint earth	Sandy	<7.0	37	37	0.04				
		2016/2/16	Sunny	4.0	Brown	Faint earth	Loamy	7.3	30	37.3	0.04				
63	Lake Sotonasakaura	2015/5/21	Sunny	22.0	Dark brown	Faint earth	Loamy	34	150	184	0.04				
		2015/9/4	Cloudy	29.7	Dark brown	Faint earth	Loamy	24	110	134	0.07				
		2015/11/30	Sunny	14.0	Dark brown	Faint earth	Loamy	19	110	129	0.05				
		2016/2/16	Sunny	6.8	Dark brown	Faint earth	Loamy	23	100	123	0.05				
64	Ikisu	2015/5/21	Sunny	22.8	Dark brown	Faint earth	Loamy	59	230	289	0.06				
		2015/9/4	Sunny	29.0	Blackish brown	Faint earth	Loamy	59	260	319	0.06				
		2015/11/30	Cloudy	12.1	Dark brown	Faint earth	Loamy	64	290	354	0.06				
		2016/2/16	Sunny	5.0	Blackish brown	Faint earth	Loamy	37	200	237	0.04				
65	Center of Lake Ushikunuma	2015/5/20	Sunny	22.1	Dark brown	Faint earth	Loamy	50	240	290	0.08				
		2015/8/12	Cloudy	31.2	Dark brown	Faint earth	Loamy	46	230	276	0.08				
		2015/11/28	Sunny	10.8	Dark brown	Faint earth	Loamy	44	170	214	0.08				
		2016/2/11	Sunny	5.5	Dark brown	Faint earth	Loamy	48	250	298	0.07				

Ibaraki Lakes and Reservoirs (Surrounding Environment) 2/2

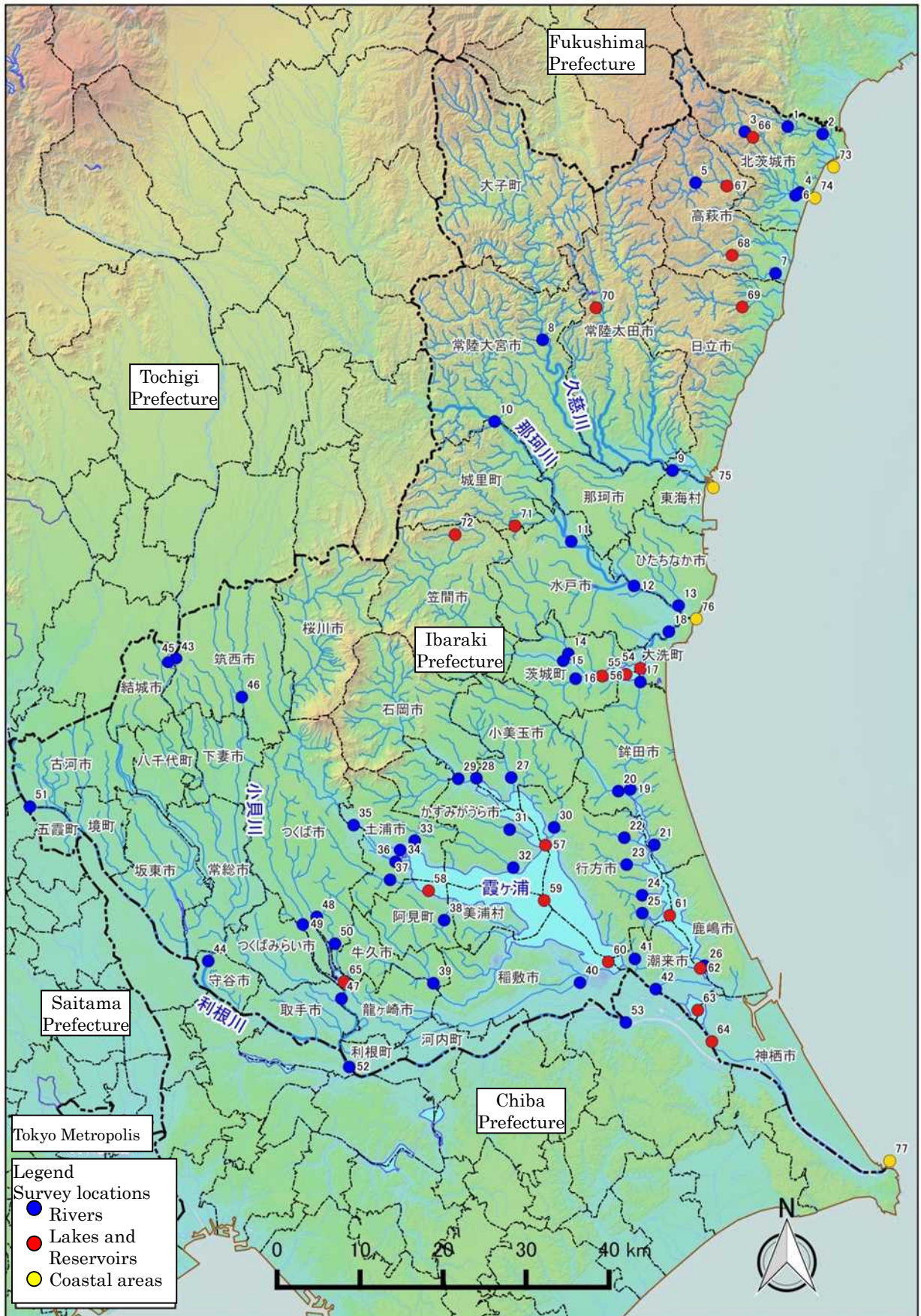
	Location			Sampling Date	Weather	Air temperature (°C)	Surrounding Environment (Soil, Air dose)						Remarks	
							Soil			Color	Odor	Property		Activity concentration [Bq/kg(dry)]
	General items						Radioactive cesium							
	No.	Water area	Location				Cs-134	Cs-137	Total					
L a k e s a n d R e s e r v o i r s	66	Mizunuma Dam	Center	2015/6/1	Sunny	24.3	Blackish brown	Faint earth	Loamy	99	430	529	0.12	
				2015/8/21	Cloudy	25.2	Blackish brown	Faint earth	Loamy	79	270	349	0.11	
				2015/11/6	Sunny	14.2	Blackish brown	Faint earth	Loamy	94	330	424	0.13	
				2016/2/3	Sunny	2.5	Blackish brown	Faint earth	Loamy	50	260	310	0.10	
	67	Koyama Dam	Center	2015/6/2	Sunny	25.2	Dim yellowish brown	Faint earth	Loamy	110	340	450	0.09	
				2015/8/21	Cloudy	24.5	Dim yellow orange	Faint earth	Loamy	50	200	250	0.09	
				2015/11/6	Sunny	17.8	Dim yellowish brown	Faint earth	Sandy	50	190	240	0.10	
				2016/2/3	Sunny	4.5	Dim yellowish brown	Faint grass	Sandy	67	440	507	0.07	
	68	Hananuki Dam	Center	2015/6/2	Sunny	28.0	Dark brown	Faint earth	Loamy	200	620	820	0.15	
				2015/8/21	Cloudy	26.0	Dark brown	Faint earth	Loamy	160	580	740	0.13	
				2015/11/5	Sunny	19.1	Dim yellowish brown	Faint earth	Loamy	220	940	1,160	0.14	
				2016/2/1	Sunny	3.8	Dark brown	Faint earth	Loamy	280	1,200	1,480	0.13	
	69	Jyuou Dam	Center	2015/6/2	Cloudy	23.6	Brown	None	Sandy	320	1,200	1,520	0.13	
				2015/8/20	Cloudy	25.0	Brown	Faint earth	Loamy	280	1,100	1,380	0.09	
				2015/11/5	Sunny	14.3	Brown	Faint earth	Loamy	410	1,600	2,010	0.10	
				2016/2/1	Cloudy	5.3	Grayish yellowish brown	Faint earth	Loamy	310	1,200	1,510	0.09	
	70	Ryujin Dam	Center	2015/6/1	Sunny	24.6	Brown	Faint earth	Loamy	68	200	268	0.08	
				2015/8/25	Cloudy	23.0	Blackish brown	Faint earth	Loamy	42	140	182	0.07	
				2015/11/4	Sunny	14.0	Brown	Faint earth	Loamy	41	190	231	0.07	
				2016/2/4	Sunny	1.1	Brown	Faint earth	Loamy	53	240	293	0.07	
	71	Fujigawa Dam	Center	2015/5/28	Sunny	24.0	Brownish gray	Faint earth	Loamy	300	1,100	1,400	0.12	
				2015/8/27	Cloudy	24.2	Blackish brown	Faint earth	Loamy	110	470	580	0.11	
				2015/11/11	Sunny	16.0	Blackish brown	Faint earth	Loamy	82	300	382	0.13	
				2016/2/15	Cloudy	9.2	Blackish brown	Faint earth	Loamy	43	190	233	0.12	
	72	Iida Dam	Center	2015/5/28	Cloudy	22.0	Dim yellowish brown	Faint earth	Loamy	130	440	570	0.08	
				2015/8/27	Cloudy	26.8	Brown	Faint earth	Loamy	120	550	670	0.08	
				2015/11/11	Sunny	15.8	Dim yellowish brown	Faint earth	Loamy	190	600	790	0.08	
				2016/2/15	Rain	6.5	Dim yellowish brown	Faint earth	Loamy	120	450	570	0.10	

Ibaraki Coastal areas (Water) 1/1

No.	Location Water area		Sampling Date	Weather	Air temperature (°C)	Water depth (m)	Water										Remarks
							General items						Activity concentration(Bq/L)				
							Water temperature (°C)	Sampling depth (m)	Color	Odor	Secchi disk depth (m)	Salinity (‰)	SS (mg/L)	Turbidity (FNU)	Radioactive cesium		
						Cs-134	Cs-137										
73	Offshore of Satone River Estuary	Surface layer	2015/5/18	Sunny	23.0	12.3	14.5	0.5	Dark grayish yellow	None	5.0	32.3	2	0.8	<0.79	<0.55	
		Deep layer					13.5	11.3	-	None		32.6	2	0.7	<0.79	<0.80	
		Surface layer	2015/8/10	Sunny	28.9	12.4	25.1	0.5	Dark grayish bluish green	None	8.5	31.1	4	1.4	<0.63	<0.55	
		Deep layer					23.7	11.4	-	None		31.2	3	1.1	<0.77	<0.61	
		Surface layer	2015/11/9	Cloudy	19.2	13.5	18.2	0.5	Grayish yellowish green	None	3.5	31.7	3	1.4	<0.68	<0.80	
		Deep layer					18.0	12.5	-	None		31.8	12	4.9	<0.75	<0.69	
Surface layer	2016/2/8	Sunny	7.0	12.3	8.5	0.5	Dark grayish green	None	6.0	32.6	2	0.7	<0.88	<0.88			
Deep layer					8.5	11.3	-	None		32.4	4	1.0	<0.65	<0.75			
74	Offshore of Okita River Estuary	Surface layer	2015/5/18	Sunny	22.0	10.5	15.7	0.5	Dark grayish green	None	5.0	31.8	2	1.0	<0.68	<0.80	
		Deep layer					13.0	9.5	-	None		32.1	<1	0.5	<0.93	<0.80	
		Surface layer	2015/8/10	Sunny	28.5	11.3	25.1	0.5	Dark grayish blue green	None	7.0	30.9	1	0.6	<0.80	<0.69	
		Deep layer					23.9	10.3	-	None		31.2	<1	0.4	<0.70	<0.66	
		Surface layer	2015/11/9	Cloudy	19.8	11.5	18.7	0.5	Grayish yellowish green	None	5.0	32.4	2	0.6	<0.67	<0.80	
		Deep layer					18.1	10.5	-	None		32.0	5	1.3	<0.77	<0.80	
Surface layer	2016/2/8	Sunny	6.0	10.8	8.9	0.5	Dark grayish green	None	6.0	31.7	1	0.7	<0.70	<0.75			
Deep layer					9.2	9.8	-	None		32.4	2	0.7	<0.70	<0.75			
75	Offshore of Momiya River/Kujigawa River Estuaries	Surface layer	2015/5/18	Sunny	23.0	9.0	18.0	0.0	Dark grayish green	None	3.0	28.0	3	1.9	<0.64	<0.84	
		Deep layer					16.0	8.0	-	None		31.9	<1	0.9	<0.68	<0.80	
		Surface layer	2015/8/10	Sunny	28.3	10.8	24.5	0.5	Dark grayish blue green	None	4.0	30.8	1	0.8	<0.91	<0.75	
		Deep layer					23.1	9.8	-	None		31.4	1	0.6	<0.81	<0.61	
		Surface layer	2015/11/9	Cloudy	18.8	10.0	18.6	0.5	Grayish yellowish green	None	10.0	28.7	3	1.6	<0.48	<0.75	
		Deep layer					18.8	9.0	-	None		31.8	<1	0.3	<0.67	<0.84	
Surface layer	2016/2/8	Sunny	4.2	9.7	8.3	0.5	Dark grayish green	None	6.0	31.7	1	0.7	<0.76	<0.88			
Deep layer					8.8	8.7	-	None		32.4	2	0.8	<0.89	<0.80			
76	Neighboring water body of Ken-o Offshore of Nakagawa River	Surface layer	2015/5/18	Sunny	24.0	5.7	16.0	0.5	Dark grayish yellowish green	None	2.0	24.0	11	4.2	<0.59	<0.84	
		Deep layer					10.5	4.7	-	None		31.4	4	1.7	<0.79	<0.55	
		Surface layer	2015/8/10	Cloudy	28.0	7.8	24.2	0.5	Dark grayish yellow green	None	2.0	30.2	3	1.7	<0.65	<0.88	
		Deep layer					23.9	6.8	-	None		31.3	<1	0.4	<0.51	<0.80	
		Surface layer	2015/11/9	Cloudy	18.8	6.5	18.1	0.5	Light grayish yellowish green	None	3.5	23.9	4	1.7	<0.84	<0.63	
		Deep layer					18.8	5.5	-	None		31.8	8	3.2	<0.68	<0.69	
Surface layer	2016/2/8	Sunny	3.2	6.0	6.5	0.5	Grayish yellow green	None	3.5	9.9	1	1.2	<0.70	<0.84			
Deep layer					9.5	5.0	-	None		32.4	1	0.9	<0.79	<0.88			
77	Offshore of Tonegawa River Estuary	Surface layer	2015/6/1	Sunny	24.8	7.9	21.0	0.5	Yellow greenish black	Faint algae	1.9	27.2	3	1.5	<0.83	<0.84	
		Deep layer					18.8	6.9	-	None		33.0	<1	0.4	<0.70	<0.61	
		Surface layer	2015/9/2	Cloudy	28.1	7.0	24.4	0.5	Grayish yellow green	None	0.7	5.4	18	11.0	<0.51	<0.80	
		Deep layer					23.4	6.0	-	None		28.1	6	2.4	<0.70	<0.61	
		Surface layer	2015/11/13	Cloudy	15.3	8.0	16.2	0.5	Grayish bluish green	None	2.0	18.1	3	1.7	<0.67	<0.69	
		Deep layer					17.1	7.0	-	None		31.1	11	4.5	<0.74	<0.75	
Surface layer	2016/2/11	Sunny	9.5	7.2	9.6	0.5	Grayish yellow green	None	4.0	23.2	3	1.6	<0.63	<0.70			
Deep layer					9.6	6.2	-	None		26.9	5	1.7	<0.56	<0.78			

C
o
a
s
t
a
l

a
r
e
a
s



Survey Locations(Ibaraki Prefecture)