

FY2015 Iwate Prefecture Survey Results

[Outline of results]

(1) Water

Rivers

Radioactive cesium (Cs-134, Cs-137): Not detectable at any location

Coastal areas

Radioactive cesium (Cs-134, Cs-137): Not detectable at any location

(2) Sediments

Rivers

Cs-134: ND - 23 Bq/kg (dry)

Cs-137: 3.7 - 98 Bq/kg (dry)

Coastal areas

Cs-134: Not detectable at any location (dry)

Cs-137: ND - 10 Bq/kg (dry)

(3) Surrounding Environment

(a) Soil

Rivers

Cs-134: ND - 460 Bq/kg (dry)

Cs-137: 17 - 1,900 Bq/kg (dry)

(b) Ambient dose rate

Rivers

0.05 - 0.13 μ Sv/h

Iwate Rivers (Water) 1/2

No.	Location			Sampling Date	Weather	Air temperature (°C)	Water depth (m)	Water										Remarks
	Water area	Location	Municipality					General items						Activity concentration(Bq/L)				
								Water temperature (°C)	Sampling depth (m)	Color	Odor	Transparency (cm)	Electrical conductivity (mS/m)	SS (mg/L)	Turbidity (FNU)	Radioactive cesium	Radioactive cesium	
Cs-134	Cs-137																	
R i v e r s	1	Sakari River Lower Reaches	Sano Bridge	Ofunato City	2015/5/17	Sunny	21.2	0.5	15.5	0.0	Yellow greenish pale gray	Faint seaweed	>100	47.5	2	1.1	<0.64	<0.70
					2015/11/15	Cloudy	16.8	0.6	13.3	0.0	Grayish yellow green	Faint seaweed	45	33.4	13	3.5	<0.74	<0.80
	2	Kesen River	Aneha Bridge	Rikuzentakada City	2015/5/17	Sunny	20.6	0.5	16.2	0.0	Greenish yellowish white	Faint seaweed	>100	1200	6	1.5	<0.77	<0.70
					2015/11/15	Cloudy	17.5	0.6	12.7	0.0	Grayish greenish yellow	None	73	548	6	3.3	<0.70	<0.80
	3	Okawa River	Prefectural border with Miyagi	Ichinoseki City	2015/5/18	Sunny	21.2	0.4	14.0	0.0	Light grayish greenish yellow	None	65	12.9	5	3.1	<0.63	<0.84
					2015/8/7	Sunny	31.3	0.2	24.0	0.0	Light grayish yellow green	None	>100	16.1	1	0.9	<0.66	<0.88
					2015/11/17	Sunny	15.3	0.4	12.0	0.0	Greenish yellowish pale gray	None	>100	11.5	2	0.9	<0.90	<0.80
					2016/2/7	Sunny	0.2	0.3	2.9	0.0	Colorless transparent	None	>100	12.5	<1	0.6	<0.65	<0.75
	4	Tsuayagawa River	Chiyogahara Bridge		2015/5/18	Sunny	23.0	0.4	14.5	0.0	Light grayish yellow	None	>100	9.9	2	1.2	<0.77	<0.61
					2015/11/17	Sunny	17.5	0.4	12.1	0.0	Yellowish white	None	>100	9.6	<1	0.6	<0.72	<0.84
					2015/5/11	Sunny	20.7	0.3	16.6	0.0	Yellow greenish pale gray	None	49	11.0	6	5.7	<0.65	<0.63
	5	Kurosawa River	Kawarada Bridge	Kanegasaki Town	2015/11/11	Sunny	10.5	0.6	10.3	0.0	Grayish yellow green	None	>100	11.4	2	1.3	<0.80	<0.63
					2015/5/14	Sunny	21.9	0.5	10.9	0.0	Light grayish yellowish green	None	>100	5.8	3	2.3	<0.79	<0.74
	6	Isawa River	Oago Bridge		2015/8/2	Sunny	29.0	0.4	21.1	0.0	Light grayish yellow green	None	>100	7.2	2	2.1	<0.77	<0.75
2015/11/9					Cloudy	14.1	0.5	11.8	0.0	Grayish greenish yellow	None	37	8.5	11	8.4	<0.73	<0.75	
2016/2/8					Sunny	1.6	0.3	2.7	0.0	Colorless transparent	None	>100	9.6	<1	0.7	<0.76	<0.80	
2015/5/11					Sunny	17.2	0.3	10.9	0.0	Yellowish pale gray	None	86	6.1	3	3.3	<0.88	<0.75	
7	Isawa River	Sajjin Bridge	Oshu City	2015/8/2	Sunny	31.9	0.4	27.0	0.0	Light grayish yellow green	None	>100	10.7	2	1.7	<0.58	<0.69	
				2015/11/11	Cloudy	10.6	0.4	10.7	0.0	Light grayish yellow green	None	41	10.0	7	6.6	<0.74	<0.88	
				2016/2/8	Sunny	0.5	0.2	1.7	0.0	Yellow greenish white	None	>100	11.5	<1	1.0	<0.80	<0.84	
				2015/5/11	Sunny	23.9	0.5	15.6	0.0	Light grayish yellow green	None	26	9.8	17	14	<0.79	<0.69	
8	Kitakami River	Fuji Bridge		2015/8/2	Sunny	33.3	0.5	29.6	0.0	Grayish yellow green	None	82	15.2	4	4.0	<0.67	<0.63	
				2015/11/9	Cloudy	15.3	0.6	12.4	0.0	Grayish yellow	None	21	14.0	56	17	<0.89	<0.84	
				2016/2/8	Sunny	6.0	0.3	5.2	0.0	Light grayish yellow green	None	>100	17.3	1	1.2	<0.76	<0.99	
				2015/5/12	Cloudy	15.9	0.4	11.3	0.0	Light grayish yellow green	None	15	8.8	27	28	<0.69	<0.84	
9	Shiratori River	Shiratori Bridge		2015/8/3	Cloudy	27.3	0.2	23.7	0.0	Light grayish yellow green	None	69	10.8	8	4.2	<0.80	<0.61	
				2015/11/9	Cloudy	15.8	0.4	13.2	0.0	Light grayish yellow green	None	23	12.0	15	10	<0.82	<0.75	
				2016/2/9	Cloudy	1.6	0.2	1.8	0.0	Yellow greenish white	None	>100	13.9	2	1.8	<0.60	<0.88	
				2015/5/12	Cloudy	16.5	0.3	14.5	0.0	Colorless transparent	None	>100	11.2	1	2.0	<0.96	<0.84	
10	Kitakami River System	Koromo River	Koromogawa Bridge	Hiraizumi Town	2015/8/3	Cloudy	30.9	0.2	27.1	0.0	Light grayish yellow green	None	>100	12.7	1	1.0	<0.95	<0.74
					2015/11/11	Sunny	12.5	0.4	11.8	0.0	Colorless transparent	None	>100	10.2	1	1.2	<0.83	<0.92
					2016/2/9	Cloudy	5.6	0.2	4.1	0.0	Light grayish yellow green	None	>100	11.0	<1	0.8	<0.68	<0.88
					2015/5/12	Cloudy	18.7	0.3	13.9	0.0	Yellowish pale gray	Faint seaweed	>100	23.0	4	3.3	<0.70	<0.85
11	Ota River	Hitosuji Bridge		2015/8/3	Sunny	32.1	0.2	27.2	0.0	Light grayish greenish yellow	None	>100	30.8	4	3.4	<0.62	<0.69	
				2015/11/11	Sunny	13.1	0.3	12.0	0.0	Yellowish pale gray	None	68	29.8	5	4.5	<0.81	<0.75	
				2016/2/9	Cloudy	3.0	0.2	2.7	0.0	Light grayish greenish yellow	None	>100	25.9	2	2.0	<0.81	<0.80	
				2015/5/13	Sunny	20.8	0.4	13.6	0.0	Light grayish yellowish green	None	95	15.6	4	2.3	<0.62	<0.70	
12	Iwai River Middle Reaches	Kamino Bridge		2015/8/3	Sunny	35.1	0.3	30.3	0.0	Light grayish greenish yellow	None	>100	18.9	2	1.4	<0.76	<0.75	
				2015/11/10	Sunny	17.9	0.5	13.3	0.0	Light grayish yellow green	None	68	16.2	8	4.4	<0.68	<0.80	
				2016/2/9	Cloudy	7.0	0.4	3.9	0.0	Light grayish yellow green	None	>100	18.6	1	1.3	<0.79	<0.75	
				2015/5/12	Cloudy	19.3	0.3	14.4	0.0	Greenish yellowish pale gray	None	>100	18.7	3	1.7	<0.89	<0.66	
13	Iwai River Lower Reaches	Kozenji Bridge	Ichinoseki City	2015/8/4	Sunny	28.7	0.2	27.4	0.0	Light grayish greenish yellow	None	>100	25.3	3	1.9	<0.67	<0.69	
				2015/11/10	Sunny	16.3	0.4	12.6	0.0	Light grayish greenish yellow	None	35	16.7	10	6.0	<0.76	<0.88	
				2016/2/11	Sunny	-0.7	0.3	1.6	0.0	Greenish yellowish white	None	>100	20.6	3	2.1	<0.68	<0.80	
				2015/5/12	Cloudy	18.9	0.5	13.6	0.0	Greenish pale gray	Faint seaweed	33	9.4	8	6.4	<0.70	<0.63	
14	Kitakami River	Chitose Bridge (Kozenji)		2015/8/4	Sunny	33.6	0.5	27.7	0.0	Grayish yellow green	None	>100	15.1	2	1.6	<0.62	<0.75	
				2015/11/10	Cloudy	13.3	1.0	12.0	0.0	Grayish yellow	None	30	11.9	15	8.9	<0.66	<0.69	
				2016/2/11	Sunny	2.9	0.4	3.0	0.0	Yellow greenish white	None	>100	14.7	1	1.5	<0.62	<0.80	

Iwate Rivers (Water) 2/2

Rivers	Location				Sampling Date	Weather	Air temperature (°C)	Water depth (m)	Water										Remarks
	No.	Water area	Location	Municipality					General items						Activity concentration(Bq/L)				
									Water temperature (°C)	Sampling depth (m)	Color	Odor	Transparency (cm)	Electrical conductivity (mS/m)	SS (mg/L)	Turbidity (FNU)	Radioactive cesium Cs-134	Radioactive cesium Cs-137	
Rivers	15	Sokei River	Unada Bridge	Ichinoseki City	2015/5/13	Cloudy	19.6	0.2	16.9	0.0	Greenish yellowish white	None	34	14.8	11	6.2	<0.79	<0.69	
					2015/8/4	Sunny	34.1	0.2	26.5	0.0	Light grayish greenish yellow	None	>100	19.4	1	1.0	<0.62	<0.55	
	2015/11/12	Sunny	9.4		0.3	9.0	0.0	Colorless transparent	None	>100	16.1	2	0.9	<0.79	<0.84				
	2016/2/7	Sunny	0.8		0.2	3.5	0.0	Yellow greenish white	None	>100	16.5	<1	0.7	<0.97	<0.84				
	2015/5/13	Sunny	18.1		0.5	13.9	0.0	Greenish yellowish white	None	>100	24.5	1	1.3	<0.80	<0.69				
	2015/8/4	Sunny	30.8		0.3	25.8	0.0	Light grayish greenish yellow	None	>100	29.4	<1	0.5	<0.82	<0.55				
	2015/11/12	Sunny	3.0		0.5	7.9	0.0	Greenish yellowish white	None	>100	28.6	<1	0.2	<0.72	<0.75				
	2016/2/11	Sunny	3.0		0.5	3.4	0.0	Light grayish yellow	None	>100	27.7	<1	0.2	<0.64	<0.69				
	17	Satetsu River	Oide Bridge		2015/5/13	Sunny	19.3	0.3	15.4	0.0	Yellowish pale gray	None	28	11.9	14	9.5	<0.68	<0.75	
					2015/8/4	Sunny	35.0	0.3	26.6	0.0	Light grayish yellow green	None	>100	17.9	<1	0.5	<0.74	<0.75	
					2015/11/12	Sunny	7.1	0.7	8.3	0.0	Colorless transparent	None	>100	12.9	<1	0.4	<0.70	<0.69	
					2016/2/10	Sunny	4.7	0.5	7.3	0.0	Yellow greenish white	None	>100	17.7	<1	0.2	<0.70	<0.63	
	18	Kitakami River System	Kanzaki Bridge		2015/5/14	Sunny	24.2	0.4	16.9	0.0	Reddish yellowish pale gray	None	>100	15.0	3	2.0	<0.79	<0.84	
					2015/8/5	Sunny	32.3	0.3	27.8	0.0	Light grayish yellow green	None	>100	20.7	2	0.9	<0.95	<0.88	
					2015/11/12	Sunny	11.9	0.4	11.5	0.0	Yellowish pale gray	None	>100	16.5	1	0.5	<0.84	<0.75	
					2016/2/10	Sunny	2.2	0.4	5.8	0.0	Yellow greenish white	None	>100	17.1	<1	0.5	<0.85	<0.80	
	19	Suzuyo River Upper Reaches	Miyata Bridge		2015/5/13	Cloudy	19.7	0.4	16.5	0.0	Light grayish yellow green	None	17	13.8	29	22	<0.97	<0.88	
					2015/8/5	Sunny	25.3	0.2	23.0	0.0	Light grayish yellow green	None	>100	18.5	1	0.8	<0.61	<0.55	
					2015/11/12	Sunny	11.3	0.3	9.5	0.0	Greenish yellowish pale gray	None	>100	15.1	2	1.3	<0.73	<0.55	
					2016/2/7	Sunny	1.2	0.3	3.4	0.0	Light grayish yellow green	None	>100	15.7	1	0.9	<0.70	<0.84	
	20	Kitakami River	Kitakamigawa Bridge		2015/5/14	Sunny	24.7	0.4	14.9	0.0	Light grayish yellow green	None	35	10.1	13	13	<0.76	<0.75	
					2015/8/5	Sunny	36.8	0.2	30.3	0.0	Light grayish yellow green	None	>100	15.3	1	0.8	<0.57	<0.84	
					2015/11/12	Sunny	14.4	0.4	10.1	0.0	Yellowish pale gray	None	>100	12.3	3	1.7	<0.51	<0.88	
					2016/2/10	Sunny	1.9	0.3	4.0	0.0	Light grayish yellow green	None	>100	14.9	1	1.5	<0.66	<0.88	
	21	Kinomi River	Higuchi Bridge		2015/5/14	Sunny	23.6	0.4	19.0	0.0	Light grayish greenish yellow	None	55	19.9	6	4.6	<0.84	<0.66	
					2015/8/5	Sunny	32.2	0.3	24.5	0.0	Light grayish yellow green	None	>100	25.1	2	1.6	<0.80	<0.69	
					2015/11/13	Sunny	11.3	0.4	10.6	0.0	Light grayish greenish yellow	None	>100	23.2	1	1.2	<0.72	<0.63	
					2016/2/10	Sunny	1.2	0.4	3.2	0.0	Light grayish yellow	None	>100	21.7	1	1.3	<0.86	<0.92	
22	Kinryu River	Tenjin Bridge	2015/5/15	Sunny	21.1	0.5	24.0	0.0	Light grayish yellow	Faint seaweed	39	20.6	11	8.0	<0.91	<0.92			
			2015/8/6	Sunny	37.0	0.2	33.5	0.0	Light grayish yellow	None	53	23.5	7	4.5	<0.65	<0.96			
			2015/11/13	Sunny	13.6	0.6	10.9	0.0	Light grayish greenish yellow	None	>100	16.5	3	3.5	<0.96	<0.80			
			2016/2/10	Snow	-0.2	0.3	1.1	0.0	Light grayish greenish yellow	None	80	15.6	3	3.2	<0.65	<0.63			

Iwate Rivers (Sediment) 2/2

No.	Location			Sampling Date	Weather	Air temperature (°C)	Water depth (m)	Sediment																	Remarks	
	Water area	Location	Municipality					Sediment temperature (°C)	Sample length (cm)	Color	Odor	General items									Activity concentration [Bq/kg(dry)]					
												Coarse gravel	Medium gravel	Grain size distribution(%)			Silt	Clay	Sediment content (%)	Density (g/cm ³)	Property	Radioactive cesium				
														Coarse sand	Medium sand	Fine sand						Cs-134	Cs-137	Total		
R i v e r s	15	Soketi River	Unada Bridge	Ichinosaki City	2015/5/13	Cloudy	19.6	0.2	16.7	3	Dim yellowish brown	Faint algae	0.0	3.7	28.2	42.3	23.9	0.9	0.2	0.7	80.8	2.650	Sand/gravel	5.2	18	23.2
					2015/8/4	Sunny	34.1	0.2	25.8	3	Dim yellow orange	Faint algae	0.0	7.4	26.3	17.9	2.6	3.0	2.1	91.2	2.686	Sand/gravel	-4.3	18	18	
					2015/11/12	Sunny	9.4	0.3	8.8	3	Dim yellowish brown	Faint swamp	0.0	5.1	17.6	27.8	35.9	8.4	2.3	3.0	76.2	2.689	Sand/gravel	5.4	21	26.4
					2016/2/7	Sunny	0.8	0.2	3.4	3	Dim yellowish brown	Faint algae	0.0	7.6	39.1	34.6	15.3	0.9	0.5	2.0	90.6	2.667	Sand/gravel	<-3.8	15	15
	16	Sarusa River	Kannon Bridge	Ichinosaki City	2015/5/13	Sunny	18.1	0.5	13.2	3	Brown	Faint algae	0.0	18.0	22.2	37.2	21.6	0.1	0.2	0.6	83.4	2.730	Gravel/sand	13	42	55
					2015/8/4	Sunny	30.8	0.3	24.2	3	Dim yellow orange	Faint algae	0.0	17.1	50.9	21.5	8.4	0.2	0.3	1.5	80.8	2.753	Gravel/sand	9.1	37	46.1
					2015/11/12	Sunny	3.0	0.5	7.8	3	Dim yellowish brown	Faint swamp	0.0	38.5	31.3	20.9	7.7	0.5	0.0	1.2	85.3	2.755	Gravel/sand	5.3	34	39.3
					2016/2/11	Sunny	3.0	0.5	3.4	3	Dark brown	Faint algae	0.0	17.5	32.6	36.3	12.8	0.4	0.1	0.3	89.3	2.753	Sand/gravel	<-5.3	34	34
	17	Satsuo River	Odoe Bridge	Ichinosaki City	2015/5/13	Sunny	19.3	0.3	13.2	3	Dim yellowish brown	Faint algae	0.0	8.2	9.7	32.2	45.8	3.0	0.3	0.8	82.7	2.691	Sand/gravel	4	16	20
					2015/8/4	Sunny	35.0	0.3	26.1	3	Dim yellow orange	Faint algae	0.0	1.8	1.6	5.5	72.8	7.4	7.2	3.8	73.3	2.701	Sand	9.2	34	43.2
					2015/11/12	Sunny	7.1	0.7	8.5	3	Grayish yellowish brown	Faint swamp	0.0	0.2	3.7	30.6	41.1	0.9	0.1	3.7	74.5	2.662	Sand/gravel	<-5.3	14	14
					2016/2/10	Sunny	4.7	0.5	3.8	3	Dim yellowish brown	Faint algae	0.0	1.9	29.4	49.5	18.3	0.4	0.1	0.5	89.3	2.663	Sand/gravel	<-5.0	8.2	8.2
	18	Kitakami River System	Kanzaki Bridge	Ichinosaki City	2015/5/14	Sunny	24.2	0.4	17.1	3	Grayish yellowish brown	Faint algae	0.0	19.9	15.0	16.2	41.0	6.8	0.5	0.6	84.8	2.794	Sand/gravel	1.6	5.7	7.3
					2015/8/5	Sunny	32.3	0.3	27.3	3	Brown	Faint algae	0.0	10.1	10.7	30.7	39.3	5.5	1.5	2.2	78.6	2.769	Sand/gravel	<-4.7	4.2	4.2
					2015/11/12	Sunny	11.9	0.4	11.3	3	Dim yellowish brown	Faint fish	0.0	2.3	0.6	7.8	76.2	9.3	1.0	2.8	72.2	2.773	Sand	<-4.9	8	8
					2016/2/10	Sunny	2.2	0.4	5.9	3	Grayish yellowish brown	Faint algae	0.0	15.1	13.8	24.8	42.9	2.8	0.1	0.5	79.3	2.862	Sand/gravel	<-8.1	3.7	3.7
	19	Senaya River Upper Reaches	Miyata Bridge	Ichinosaki City	2015/5/13	Cloudy	19.7	0.4	16.3	3	Dim yellowish brown	Faint algae	0.0	0.2	2.5	20.7	72.7	2.9	0.1	1.0	80.2	2.647	Sand	17	55	72
					2015/8/5	Sunny	25.3	0.2	22.6	3	Dark greenish gray	None	0.0	0.1	9.9	58.9	27.9	0.6	0.0	2.6	86.7	2.686	Sand	12	42	54
					2015/11/12	Sunny	11.3	0.3	9.2	3	Dark brown	Faint swamp	0.0	0.6	15.4	39.8	38.2	2.7	0.0	3.3	74.4	2.699	Sand/gravel	7.4	33	40.4
					2016/2/7	Sunny	21.2	0.3	3.2	3	Dark brown	Faint algae	0.0	0.2	6.2	18.7	57.8	12.6	1.3	3.0	72.0	2.691	Sand	14	64	78
	20	Kitakami River	Kitakami-gawa Bridge	Ichinosaki City	2015/5/14	Sunny	24.7	0.4	14.7	3	Brown	Faint algae	0.0	30.1	4.1	2.3	55.3	7.4	0.1	0.6	82.1	2.754	Sand	3	10	13
					2015/8/5	Sunny	36.8	0.2	29.3	3	Dim yellowish brown	Faint algae	0.0	33.1	18.5	15.8	30.3	0.6	0.5	1.4	81.7	2.722	Gravel/sand	<-3.4	6.6	6.6
					2015/11/12	Sunny	14.4	0.4	10.8	3	Grayish yellowish brown	Faint algae	0.0	4.0	0.3	3.6	67.4	0.7	3.8	75.7	2.696	Sand	3.9	13	16.9	
					2016/2/10	Sunny	1.9	0.3	4.2	3	Blackish brown	Faint algae	0.0	39.4	12.6	7.0	36.4	2.8	0.5	1.4	79.6	2.769	Sand/gravel	<-4.4	8.7	8.7
	21	Kinomi River	Higuchi Bridge	Ichinosaki City	2015/5/14	Sunny	23.6	0.4	18.1	3	Dark grayish yellow	Faint algae	0.0	0.9	4.4	70.2	23.4	0.2	0.1	0.9	84.4	2.651	Sand/gravel	3.6	12	15.6
					2015/8/5	Sunny	32.2	0.3	23.3	3	Grayish yellowish brown	Faint algae	0.0	13.1	18.3	38.0	25.4	1.1	0.7	3.3	80.6	2.709	Sand/gravel	<-3.8	17	17
					2015/11/13	Sunny	11.3	0.4	9.8	3	Dim yellowish brown	Faint swamp	0.0	10.8	30.1	48.7	7.3	0.2	0.6	2.3	83.9	2.689	Sand/gravel	<-4.3	14	14
					2016/2/10	Sunny	1.2	0.4	3.5	3	Olive brown	None	0.0	21.2	48.8	27.1	1.3	0.1	0.5	1.0	94.0	2.717	Sand/gravel	<-4.5	12	12
	22	Kinayu River	Tenjin Bridge	Ichinosaki City	2015/5/15	Sunny	21.1	0.5	22.1	3	Dark grayish yellow	Faint algae	0.0	7.8	9.8	28.3	52.8	0.5	0.0	0.8	85.1	2.694	Sand/gravel	10	40	50
					2015/8/6	Sunny	37.9	0.2	31.5	3	Grayish yellowish brown	faint sewage	0.0	19.7	16.9	20.9	36.4	3.6	0.7	1.9	79.2	2.705	Gravel/sand	13	48	61
					2015/11/13	Sunny	13.6	0.6	10.1	3	Dim yellowish brown	Faint swamp	0.0	9.5	16.4	32.8	37.6	0.7	0.7	2.2	76.2	2.683	Sand/gravel	8.5	40	48.5
					2016/2/10	Snow	-0.2	0.3	1.8	3	Dim yellowish brown	None	0.0	23.0	15.8	16.2	39.8	1.0	1.8	2.4	72.3	2.669	Sand/gravel	18	67	85

Iwate Rivers (Surrounding Environment) 2/2

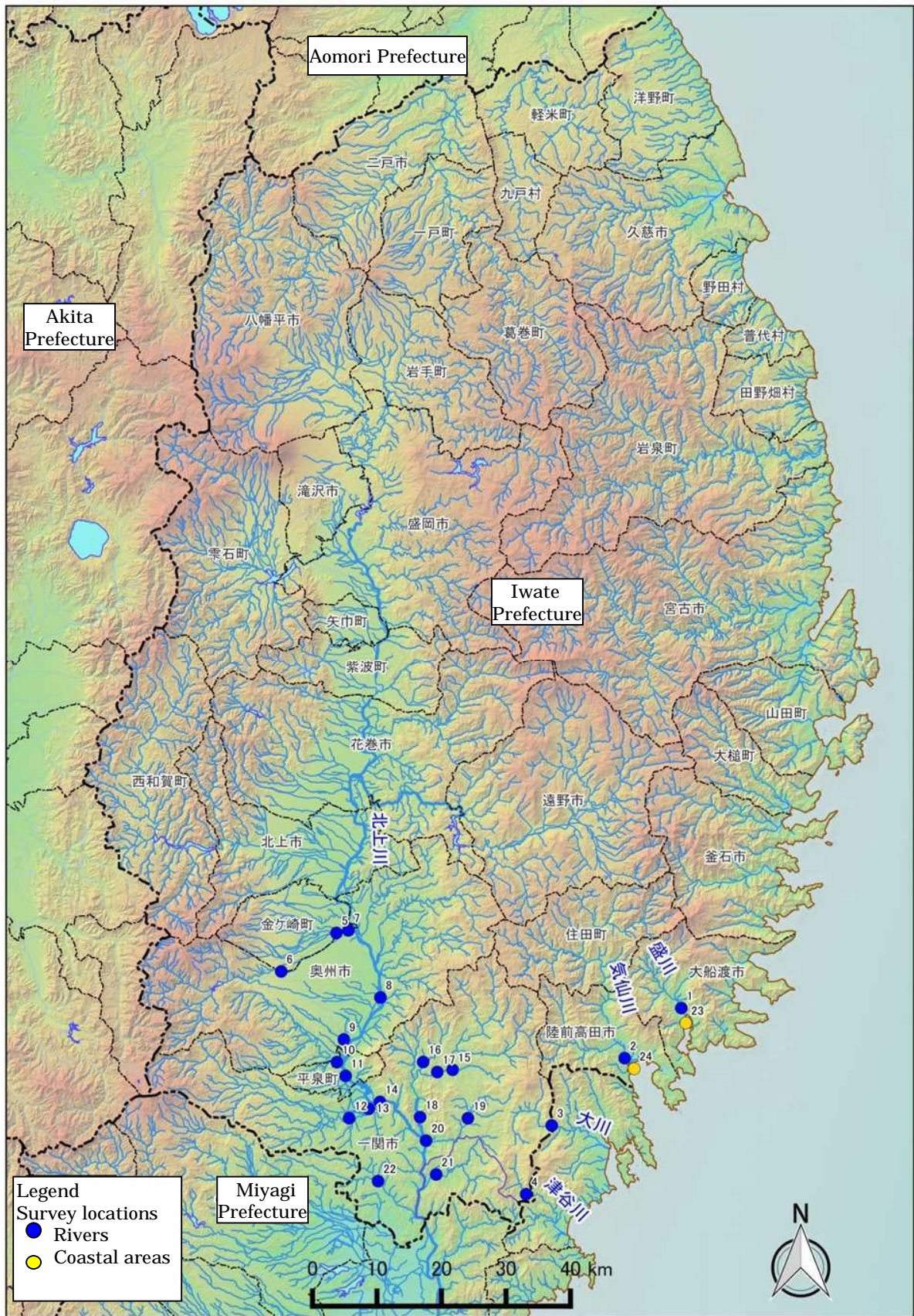
Location				Sampling Date	Weather	Air temperature (°C)	Surrounding Environment(Soil,Air dose)													Remarks	
							Left bank						Right bank								
No.	Water area	Location	Municipality	Color	Odor	Property	Activity concentration [Bq/kg(dry)]			Air Dose (μSv/h)	Color	Odor	Property	Activity concentration [Bq/kg(dry)]			Air Dose (μSv/h)				
							Radioactive cesium							Radioactive cesium							
							Cs-134	Cs-137	Total					Cs-134	Cs-137	Total					
R i v e r s	15	Sokei River	Unada Bridge	Ichinoseki City	2015/5/13	Cloudy	19.6	Blackish brown	Faint grass	Loamy	99	350	449	0.07	Dim yellowish brown	Faint grass	Loamy	89	340	429	0.08
					2015/8/4	Sunny	34.1	Dim yellow orange	None	Loamy	110	360	470	0.07	Dim yellowish orange	None	Loamy	160	620	780	0.07
	16	Sarusawa River	Kannon Bridge	Ichinoseki City	2015/11/12	Sunny	9.4	Blackish brown	Faint earth	Loamy	72	380	452	0.07	Dark brown	Faint earth	Loamy	41	200	241	0.07
					2016/2/7	Sunny	0.8	Blackish brown	Faint earth	Loamy	140	610	750	0.07	Grayish yellowish brown	Faint earth	Loamy	91	410	501	0.07
	17	Satetsu River	Oide Bridge	Ichinoseki City	2015/5/13	Sunny	18.1	Dim yellowish brown	Faint earth	Loamy	110	450	560	0.08	Dark brown	Faint earth	Loamy	290	900	1190	0.08
					2015/8/4	Sunny	30.8	Dim yellowish brown	Faint earth	Loamy	130	560	690	0.08	Dim yellowish brown	Faint earth	Loamy	320	1400	1720	0.07
	18	Kitakami River System	Kanzaki Bridge	Ichinoseki City	2015/11/12	Sunny	3.0	Grayish yellowish brown	Faint earth	Loamy	130	640	770	0.07	Dim yellowish brown	Faint earth	Loamy	130	540	670	0.07
					2016/2/11	Sunny	3.0	Blackish brown	Faint earth	Loamy	170	890	1060	0.07	Dim yellowish brown	Faint earth	Loamy	120	580	700	0.07
	19	Senmaya River Upper Reaches	Miyata Bridge	Ichinoseki City	2015/5/13	Sunny	19.3	Dim yellowish brown	Faint grass	Loamy	110	450	560	0.07	Dark brown	Faint grass	Loamy	220	800	1020	0.07
					2015/8/4	Sunny	35.0	Dim yellowish brown	None	Loamy	190	820	1010	0.06	Dim yellowish brown	None	Loamy	210	850	1060	0.07
	20	Kitakami River	Kitakamigawa Bridge	Ichinoseki City	2015/11/12	Sunny	7.1	Dark brown	Faint earth	Loamy	130	630	760	0.06	Dark brown	Faint earth	Loamy	170	880	1050	0.07
					2016/2/10	Sunny	4.7	Dark brown	Faint earth	Loamy	130	670	800	0.06	Dim yellowish brown	Faint earth	Loamy	120	560	680	0.07
	21	Kinomi River	Higuchi Bridge	Ichinoseki City	2015/5/14	Sunny	24.2	Dim yellowish brown	Faint grass	Loamy	280	1200	1480	0.12	Dark brown	Faint grass	Loamy	180	720	900	0.12
					2015/8/5	Sunny	32.3	Grayish yellowish brown	None	Loamy	460	1900	2360	0.11	Dim yellowish brown	None	Loamy	250	960	1210	0.11
	22	Kinryu River	Tenjin Bridge	Ichinoseki City	2015/11/12	Sunny	11.9	Dim yellowish brown	Faint earth	Loamy	230	1100	1330	0.10	Blackish brown	Faint earth	Loamy	130	500	630	0.10
					2016/2/10	Sunny	2.2	Grayish yellowish brown	Faint earth	Loamy	250	950	1200	0.11	Blackish brown	Faint earth	Loamy	81	400	481	0.11
	20	Kitakami River	Kitakamigawa Bridge	Ichinoseki City	2015/5/13	Cloudy	19.7	Grayish yellowish brown	Faint grass	Loamy	160	590	750	0.13	Grayish yellowish brown	Faint grass	Loamy	100	420	520	0.13
					2015/8/5	Sunny	25.3	Blackish brown	Faint earth	Loamy	260	1100	1360	0.12	Grayish yellowish brown	Faint earth	Loamy	350	1400	1750	0.12
	21	Kinomi River	Higuchi Bridge	Ichinoseki City	2015/11/12	Sunny	11.3	Blackish brown	Faint earth	Loamy	170	640	810	0.11	Dim yellowish brown	Faint earth	Loamy	150	710	860	0.11
					2016/2/7	Sunny	1.2	Blackish brown	Faint earth	Loamy	260	1200	1460	0.11	Blackish brown	Faint earth	Loamy	210	960	1170	0.11
	20	Kitakami River	Kitakamigawa Bridge	Ichinoseki City	2015/5/14	Sunny	24.7	Dark brown	Faint grass	Loamy	74	300	374	0.08	Dark brown	Faint grass	Loamy	260	960	1220	0.12
					2015/8/5	Sunny	36.8	Dim yellowish brown	None	Loamy	270	1200	1470	0.08	Grayish yellowish brown	None	Loamy	160	720	880	0.11
	21	Kinomi River	Higuchi Bridge	Ichinoseki City	2015/11/12	Sunny	14.4	Dark brown	Faint earth	Loamy	180	760	940	0.07	Dark brown	Faint earth	Loamy	180	780	960	0.10
					2016/2/10	Sunny	1.9	Dark brown	Faint earth	Loamy	200	880	1080	0.08	Dim yellowish brown	Faint earth	Loamy	120	630	750	0.10
	21	Kinomi River	Higuchi Bridge	Ichinoseki City	2015/5/14	Sunny	23.6	Brown	Faint grass	Loamy	53	200	253	0.06	Blackish brown	Faint grass	Loamy	33	120	153	0.06
					2015/8/5	Sunny	32.2	Grayish yellowish brown	Faint earth	Loamy	64	270	334	0.06	Dim yellowish orange	Faint earth	Loamy	32	140	172	0.05
	22	Kinryu River	Tenjin Bridge	Ichinoseki City	2015/11/13	Sunny	11.3	Brown	Faint earth	Loamy	87	320	407	0.05	Dark brown	Faint earth	Loamy	19	120	139	0.05
					2016/2/10	Sunny	1.2	Grayish yellowish brown	Faint earth	Loamy	83	400	483	0.06	Blackish brown	Faint earth	Loamy	26	130	156	0.05
22	Kinryu River	Tenjin Bridge	Ichinoseki City	2015/5/15	Sunny	21.1	Blackish brown	Faint grass	Loamy	170	600	770	0.13	Dim yellowish brown	Faint grass	Loamy	210	830	1040	0.13	
				2015/8/6	Sunny	37.0	Grayish yellowish brown	Faint earth	Loamy	290	1300	1590	0.11	Grayish yellowish brown	Faint earth	Loamy	260	980	1240	0.13	
22	Kinryu River	Tenjin Bridge	Ichinoseki City	2015/11/13	Sunny	13.6	Blackish brown	Faint earth	Loamy	190	810	1000	0.12	Dark brown	Faint earth	Loamy	180	900	1080	0.11	
				2016/2/10	Snow	-0.2	Blackish brown	Faint earth	Loamy	180	820	1000	0.13	Grayish yellowish brown	None	Loamy	180	770	950	0.12	

Iwate Coastal areas (Water) 1/1

	Location			Sampling Date	Weather	Air temperature (°C)	Water depth (m)	Water									Remarks	
								General items							Activity concentration(Bq/L)			
	No.	Water area						Water temperature (°C)	Sampling depth (m)	Color	Odor	Secchi disk depth (m)	Salinity (‰)	SS (mg/L)	Turbidity (FNU)	Radioactive cesium		
																Cs-134		Cs-137
Coastal areas	23	Ofunato Bay (A)	S-31	Surface layer	2015/6/1	Sunny	14.9	16.5	13.3	0.5	Dark grayish green	None	9.5	28.0	<1	0.3	<0.62	<0.70
				Deep layer					10.7	15.5	-	None		30.0	<1	0.3	<0.72	<0.88
		Surface layer	2015/11/18	Sunny	13.0	16.9	15.4	0.5	Dark grayish blue green	None	10.4	26.2	<1	0.5	<0.80	<0.75		
		Deep layer					15.8	15.9	-	None		31.2	<1	0.7	<0.63	<0.75		
	24	Hirota Bay	S-34	Surface layer	2015/6/1	Sunny	19.2	10.5	14.0	0.5	Dark grayish green	None	6.5	27.0	<1	0.4	<0.77	<0.78
				Deep layer					12.0	9.5	-	None		30.0	2	1.4	<0.79	<0.75
			Surface layer	2015/11/18	Sunny	13.7	11.3	15.5	0.5	Dark grayish green	None	6.3	28.4	1	0.6	<0.72	<0.80	
			Deep layer					15.9	10.3	-	None		31.3	2	1.6	<0.61	<0.84	

Iwate Coastal areas (Sediment) 1/1

	Location		Sampling Date	Weather	Air temperature (°C)	Water depth (m)	Sediment																	Activity concentration [Bq/kg(dry)]			Remarks
							No.	Water area	Sediment temperature (°C)	Sample length (cm)	Color	Odor	General items								Sediment content (%)	Density (g/cm ³)	Property				
	Grain size distribution(%)												Cs-134	Cs-137	Total												
	Coarse gravel	Medium gravel														Fine gravel	Coarse sand	Medium sand	Fine sand	Silt				Clay	Cs-134	Cs-137	
Coastal areas	23	Ofumoto Bay (A)	S-31	2015/6/1	Sunny	14.9	16.5	10.6	10	Olive black	None	0.0	0.6	0.4	1.8	12.8	15.6	48.8	20.1	52.1	2.647	Silt/sand	<1.1	3.2	3.2		
				2015/11/18	Sunny	13.0	16.9	15.6	12	Olive black	None	0.0	0.0	0.2	0.9	7.4	15.1	56.3	20.1	45.0	2.640	Silt	<8.4	10	10		
	24	Hirota Bay	S-34	2015/6/1	Sunny	19.2	10.5	12.2	10	Olive black	None	0.0	0.0	0.1	1.2	65.0	27.6	1.2	4.9	75.8	2.765	Sand/silt/gravel	<0.92	1.4	1.4		
				2015/11/18	Sunny	13.7	11.3	15.7	8	Olive black	Faint algae	0.0	0.8	1.8	13.1	67.8	10.9	0.6	5.1	76.4	2.740	Sand/gravel	<0.80	<0.88	-		



Survey Locations (Iwate Prefecture)