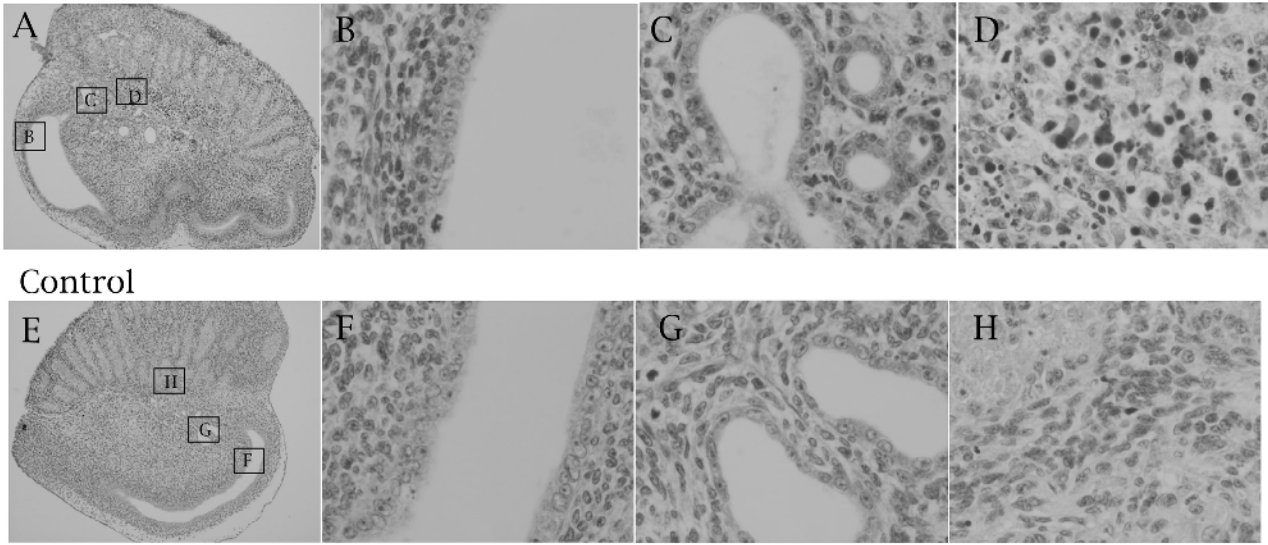


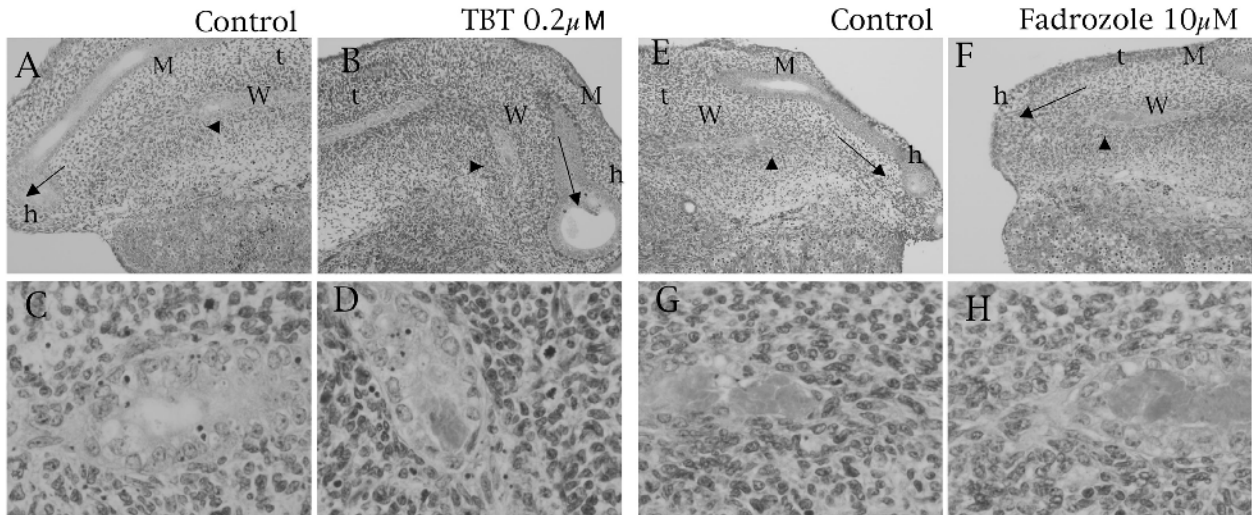
Fig.6. Histology of testis and mesonephro organ culture treated with TBT  
TBT 1 $\mu$ M



A-D: Testis and mesonephros treated with TBT. E-F: Contralateral organ as vehicle control. A,E: Whole organs. B, F Epithelium of wolffian duct. C, G: Efferent ducts of testis. D, H: Seminiferous cords close to mesonephros. Abnormal cell death was observed in TBT-treated gonad.

*Department of Veterinary Physiology, N. V. A. U.*

Fig. 7. Histology of female mesonephros culture with TBT and Fadrozole



A, B, E, F: Mesonephric tissue. C, D, G, H: Edge of Mullerian duct. Although the remnant of Mullerian duct was observed in control mesonephros treated with vehicle, the distance of the remnant remained appears longer in TBT and Fadrozole-treated than in contralateral mesonephros. M: Mullerian duct, W: Wolffian duct, h: head, t: tail, arrow: direction of tail to head, arrowhead: remnant of Mullerian duct.

*Department of Veterinary Physiology, N. V. A. U.*