

FY2021 Gunma Prefecture Survey Results

[Outline of results]

(1) Water

Rivers

Radioactive cesium (Cs-134, Cs-137): Not detectable at any location

Lakes and reservoirs

Radioactive cesium (Cs-134, Cs-137): Not detectable at any location

(2) Sediments

Rivers

Cs-134: ND - 23 Bq/kg (dry)

Cs-137: 1.0 - 590 Bq/kg (dry)

Lakes and reservoirs

Cs-134: ND - 340 Bq/kg (dry)

Cs-137: 20 - 9,300 Bq/kg (dry)

(3) Surrounding Environment

(a) Soil

Rivers

Cs-134: ND - 140 Bq/kg (dry)

Cs-137: ND - 3,900 Bq/kg (dry)

Lakes and reservoirs

Cs-134: ND - 150 Bq/kg (dry)

Cs-137: 11 - 5,000 Bq/kg (dry)

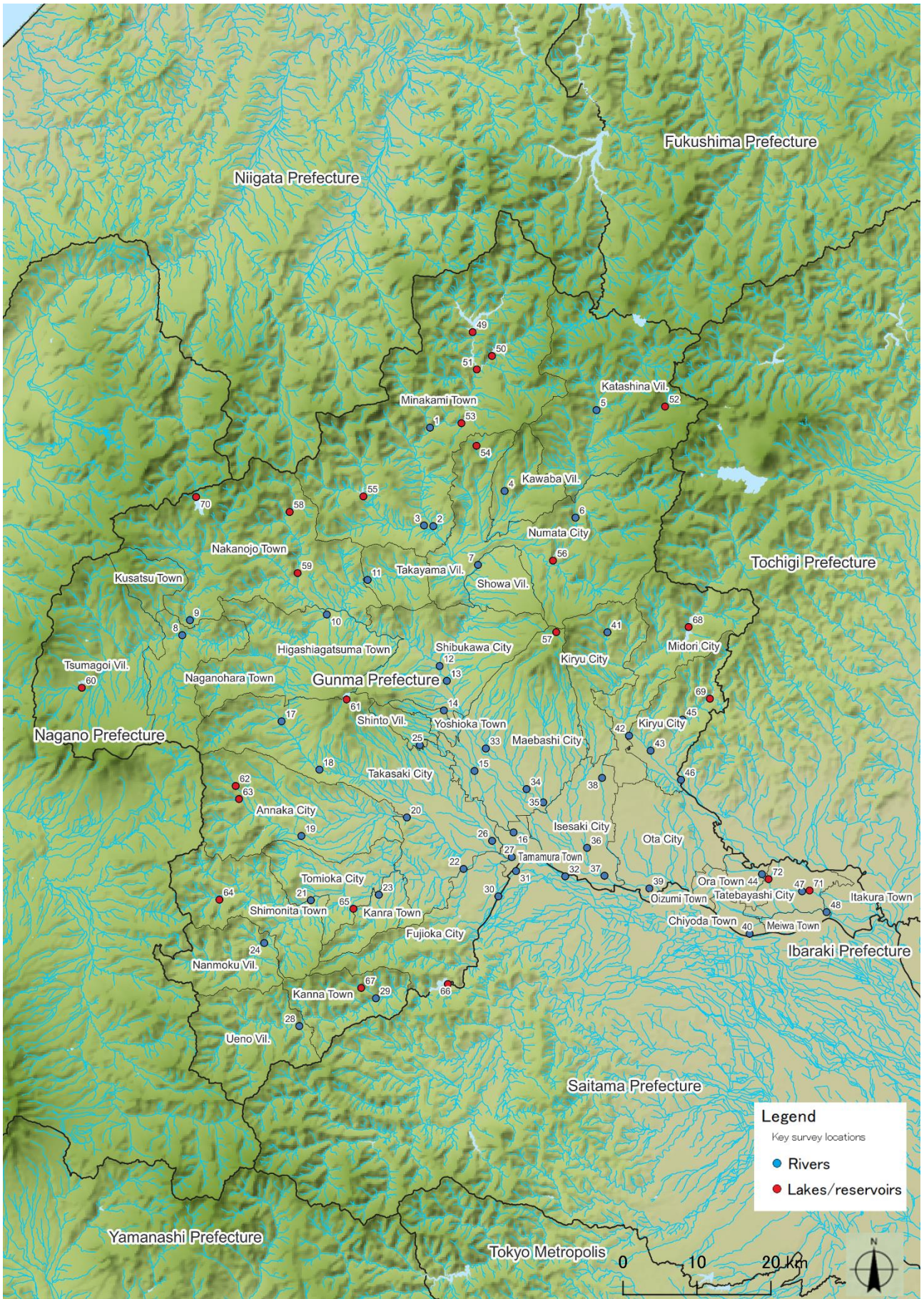
(b) Ambient dose rate

Rivers

0.03 - 0.13 μ Sv/h

Lakes and reservoirs

0.04 - 0.18 μ Sv/h



Survey Locations (Gunma Prefecture)