

FY2021 Fukushima Prefecture Survey Results

[Outline of results]

(1) Water

Rivers

Radioactive cesium (Cs-134, Cs-137): Not detectable at any location

Lakes and reservoirs

Cs-134: Not detectable at any location

Cs-137: ND - 2.7 Bq/L

Coastal areas

Radioactive cesium (Cs-134, Cs-137): Not detectable at any location

(2) Sediments

Rivers

Cs-134: ND - 70 Bq/kg (dry)

Cs-137: ND - 1,900 Bq/kg (dry)

Lakes and reservoirs

Cs-134: ND - 8,900 Bq/kg (dry)

Cs-137: ND - 240,000 Bq/kg (dry)

Coastal areas

Cs-134: ND - 19 Bq/kg (dry)

Cs-137: 1.5 - 530 Bq/kg (dry)

(3) Surrounding Environment

(a) Soil

Rivers

Cs-134: ND - 2,500 Bq/kg (dry)

Cs-137: ND - 63,000 Bq/kg (dry)

Lakes and reservoirs

Cs-134: ND - 7,000 Bq/kg (dry)

Cs-137: 9.1 - 180,000 Bq/kg (dry)

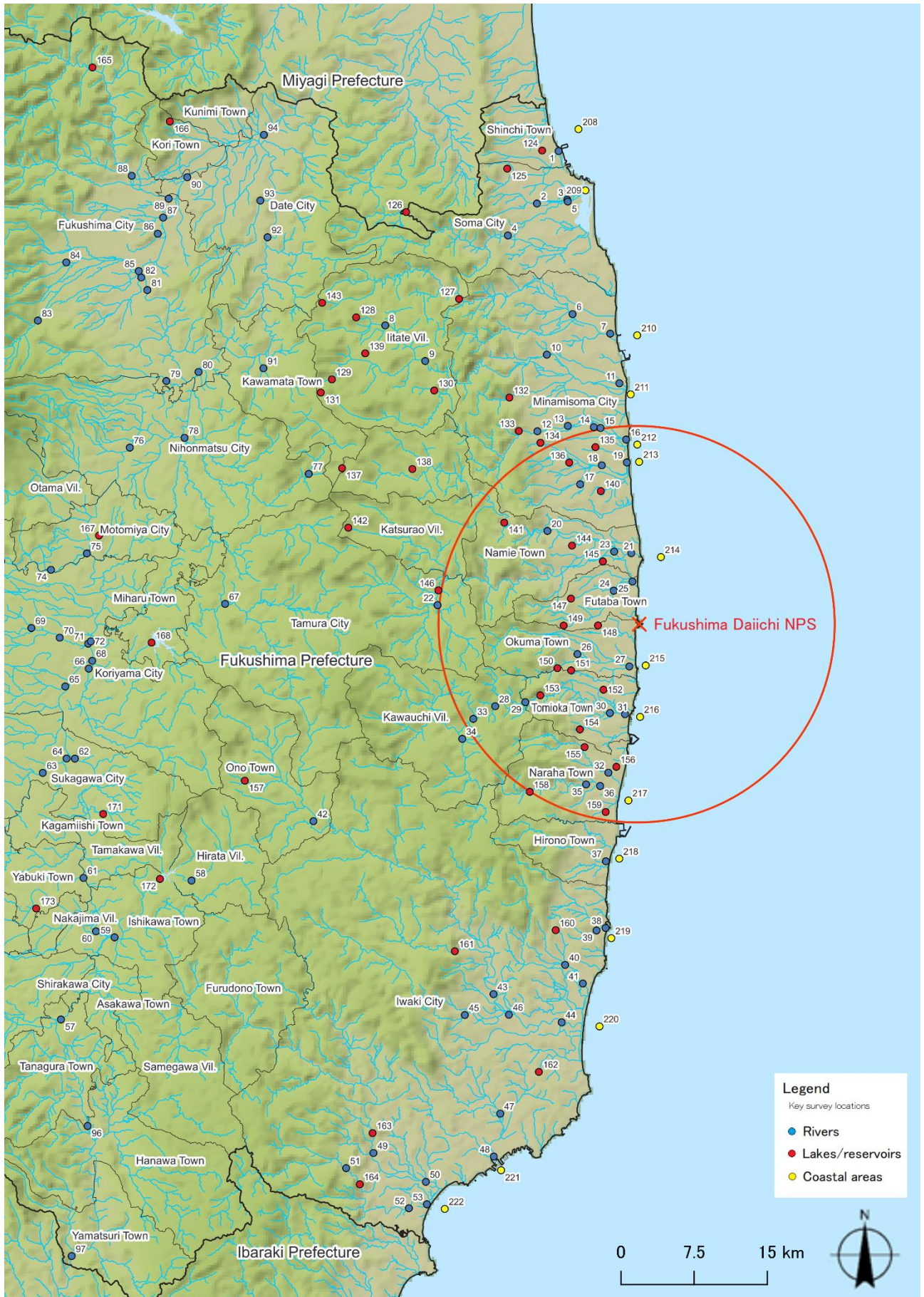
(b) Ambient dose rate

Rivers

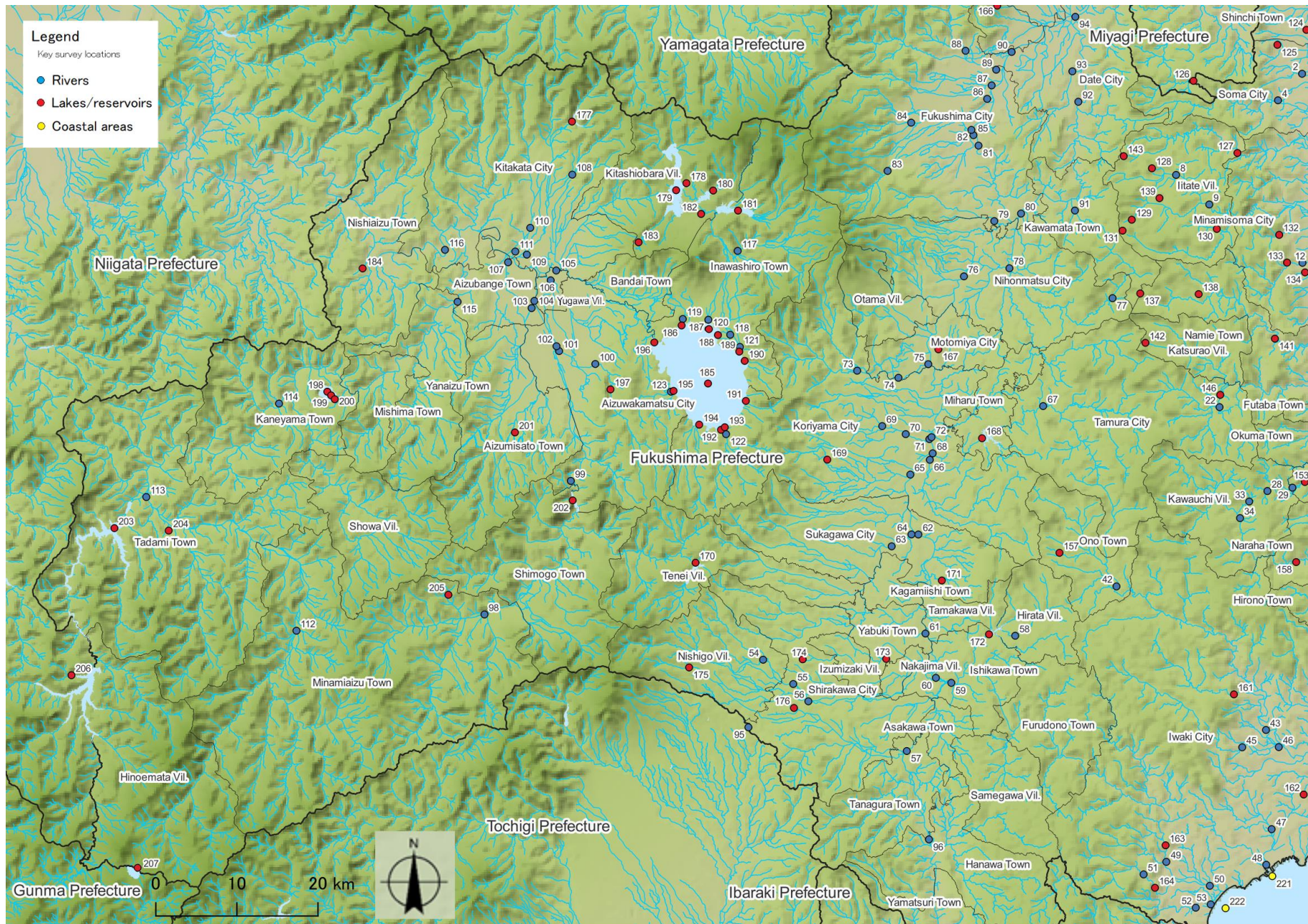
0.02 - 2.65 μ Sv/h

Lakes and reservoirs

0.03 - 6.50 μ Sv/h



Survey Locations (Fukushima Prefecture)



Survey Locations (Fukushima Prefecture)