

Fig. 10. Number of CRH-ir neurons in the PVN (A), percentage of ACTH-ir cells in the anterior pituitary gland (B) and number of ACTH-ir cells in the anterior pituitary gland (C) of NAG (OVA⁻) (closed bar) and AG (OVA⁺) (open bar) mice. Values are expressed as mean \pm SEM. * $p < 0.05$ vs. 0 (control) subgroup of NAG mice, # $p < 0.05$ vs. 0 (control) subgroup of AG mice and ¶ $p < 0.05$ vs. the corresponding subgroup of NAG mice. The number of mice in each subgroup is 5.

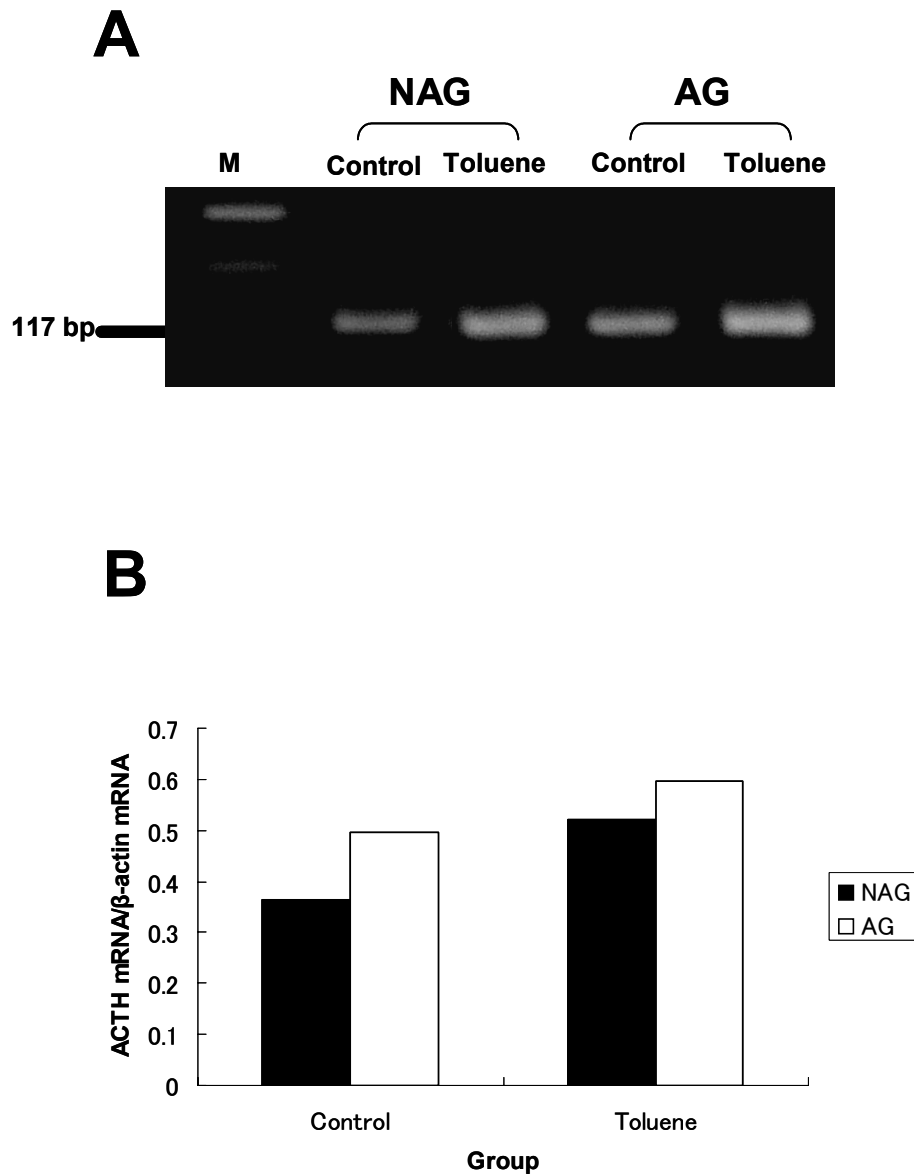


Fig. 11. Expression of ACTH-mRNA in the pituitary gland of NAG (OVA⁻) and AG (OVA⁺) mice using RT-PCR (A) and intensity relative to those of β -actin mRNA (B). The size of the amplification bands of ACTH is 117 bp. M, 100-bp ladder.