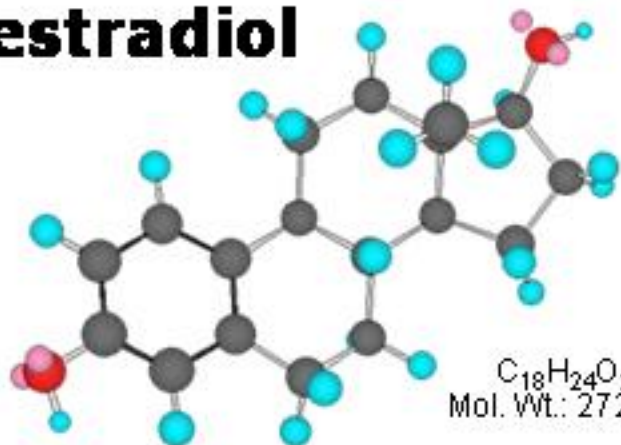
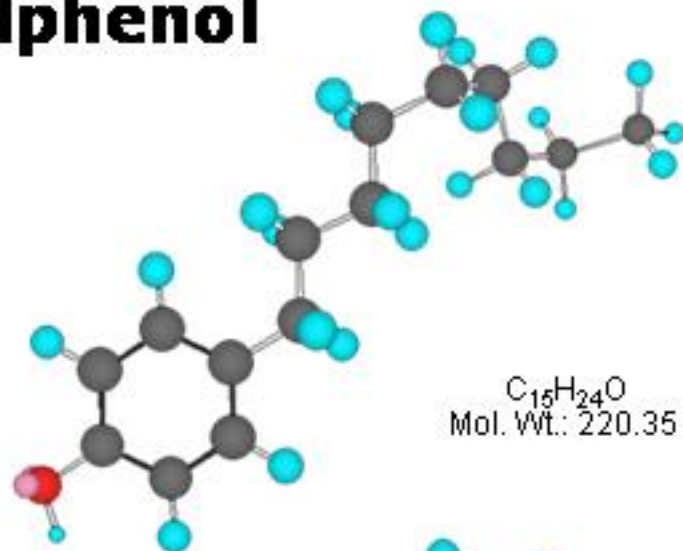


17 β -estradiol



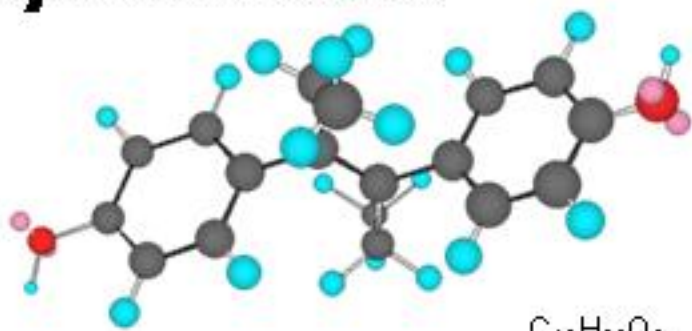
$C_{18}H_{24}O_2$
Mol. Wt.: 272.38

Nonylphenol



$C_{15}H_{24}O$
Mol. Wt.: 220.35

Diethylstilbestrol



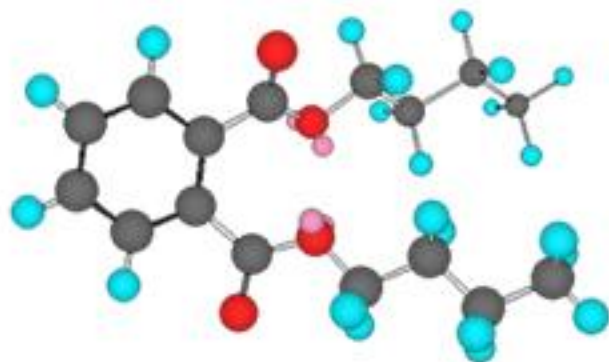
$C_{18}H_{20}O_2$
Mol. Wt.: 268.35

Bisphenol A

$C_{15}H_{16}O_2$
Mol. Wt.: 228.29



Dibutyl phthalate



$C_{16}H_{22}O_4$
Mol. Wt.: 278.34

Kanamycin



$C_{19}H_{38}N_4O_{10}$
Mol. Wt.: 482.53