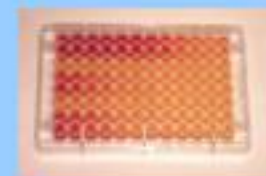
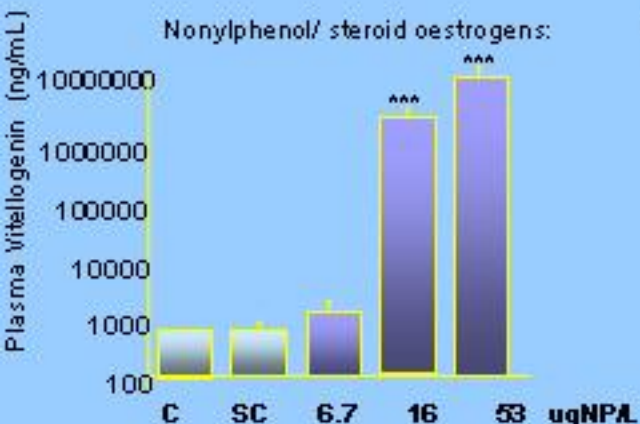


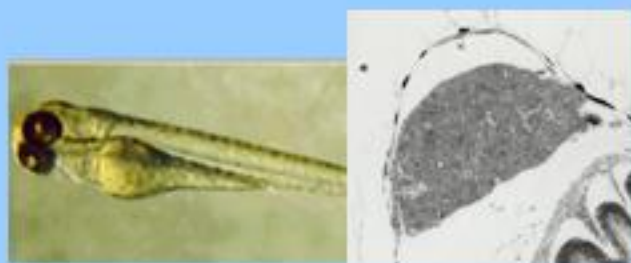
# Steroid oestrogens (natural and synthetic) and alkylphenolic are major contaminants in WwTWs effluents



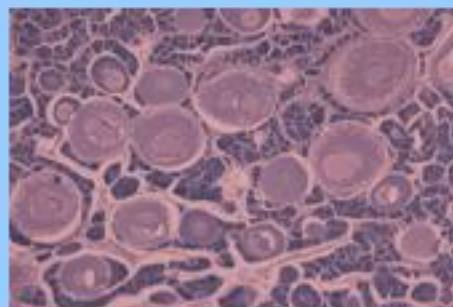
*..and these induce all of the biological effects seen in roach.....*



Vitellogenin induction at concentrations found in effluents and some surface waters.



Ethinylestradiol at/close to those in the environment can cause disruption in the development of gonadal ducts when the fish are exposed during early life



Ethinylestradiol also induces sex cell disruption (eggs in the testes).