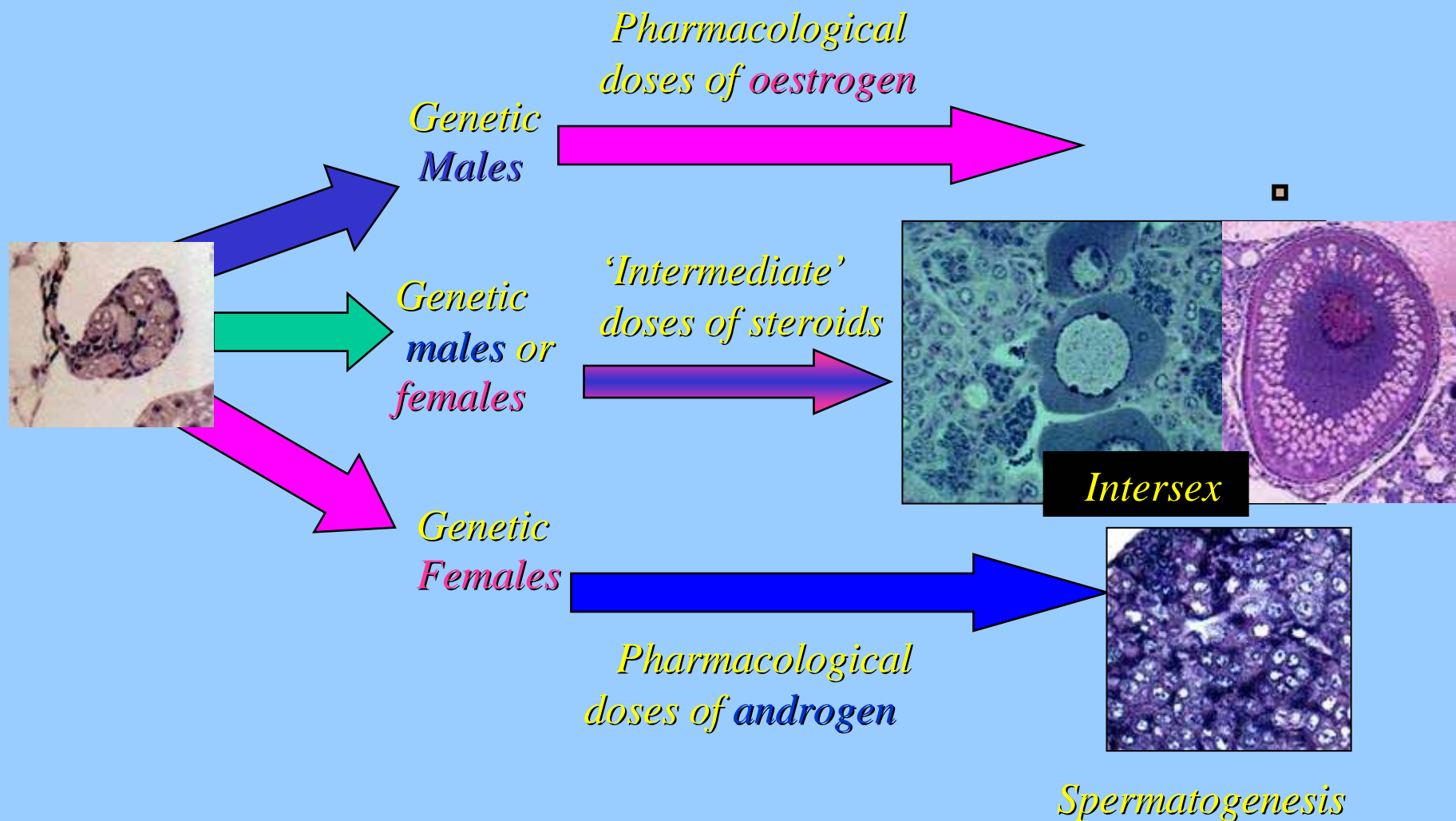


Sexual plasticity in fish....sex can be altered on exposure to steroids during early life

Oogenesis

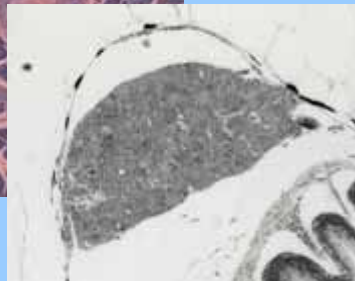
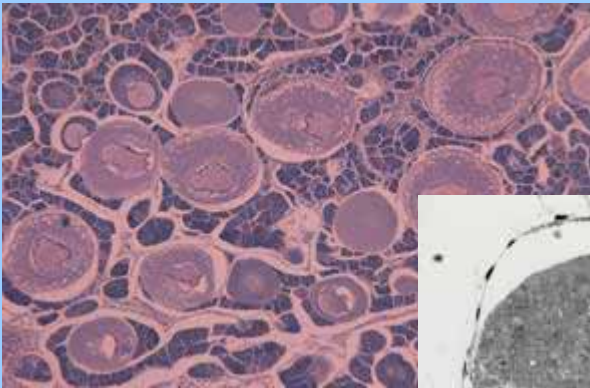
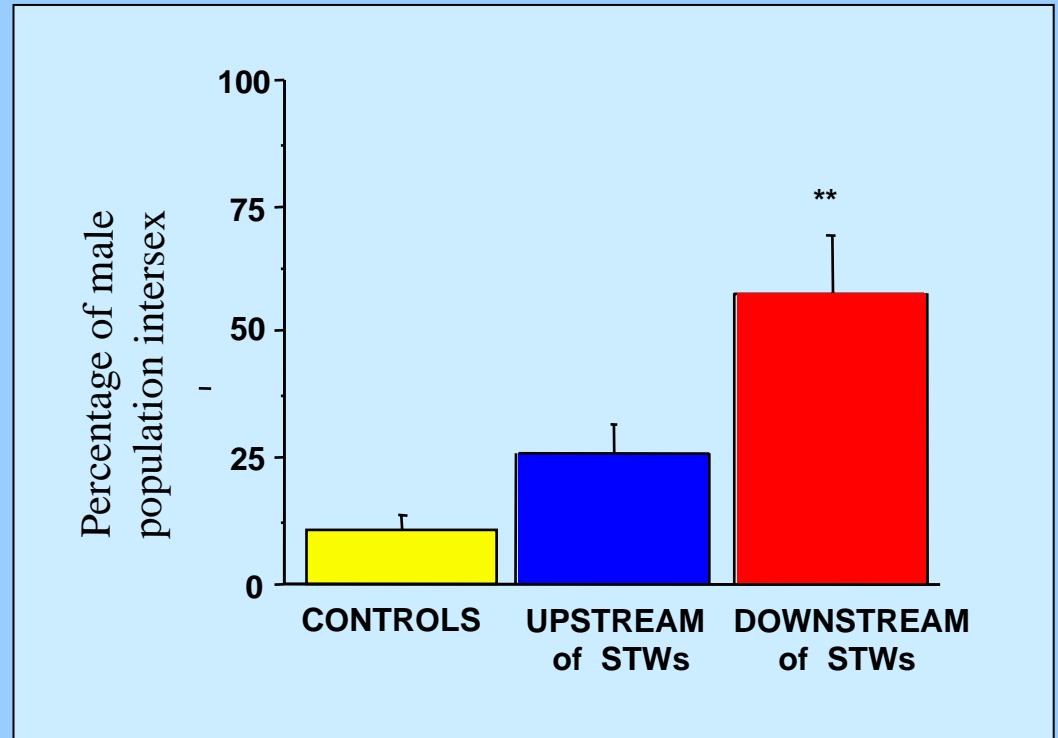
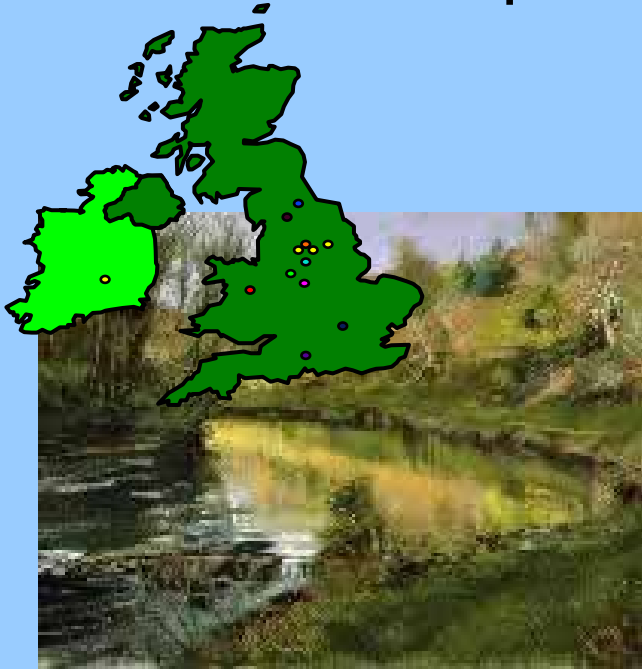


Our Environmental Sentinel – The Roach (*Rutilus rutilus*)



Member of the carp family that is fundamentally important to our freshwater ecosystem. Widely distributed across UK and Europe, comprising up to 50% of lowland riverine fish biomass

Sexual disruption in Roach in UK Rivers



Jobling, S., Nolan, M., Tyler, C.R., Brighty, G., and Sumpter, J.P. (1998). Environmental Science and Technology 32: 2498-2506