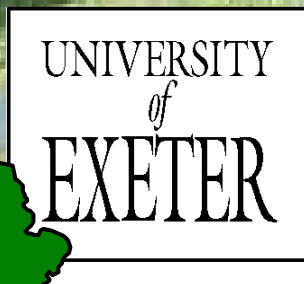
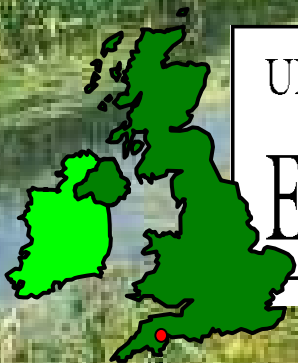
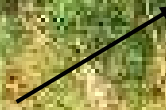
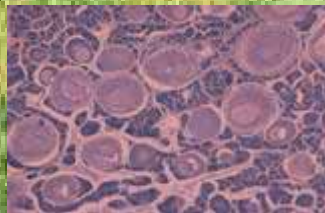
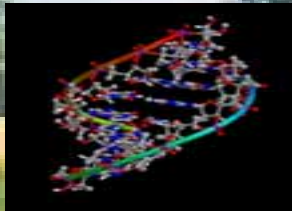
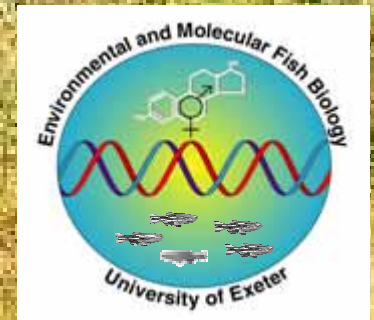


Impacts of Endocrine Disruption on Roach (*Rutilus rutilus*) Populations living in English Rivers



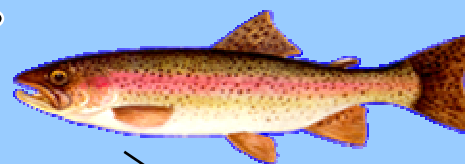
Professor Charles R. Tyler



Sexual Disruption in Fish in English Rivers- A Case History

Caged Trout studies

Sewage Treatment Works Effluents are Oestrogenic



Vitellogenin

Purdom, C.E., Hardiman, P.A., Bye, V.,
Eno, N.C., Tyler, C.R. and Sumpter, J.P.
(1994). *Chemistry and Ecology*. 8:275-285.

Oestrogenic activity in UK Rivers.

