

### **III. 保健に関する統計（参考資料）**

---

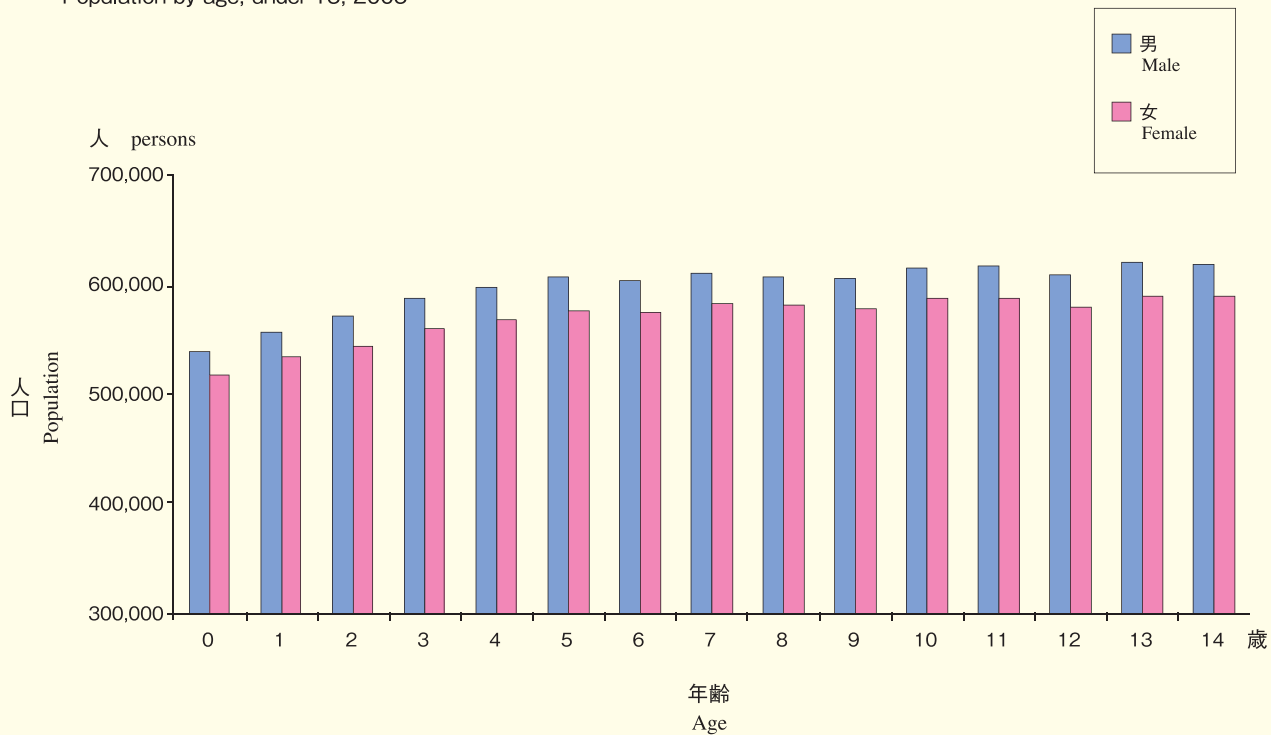
#### **Statistics Concerning Health (Reference)**

### III. 保健に関する統計 (参考資料) Statistics Concerning Health (Reference)

#### 人口 (Population)

##### (56) 15歳未満の年齢別人口 (平成17年)

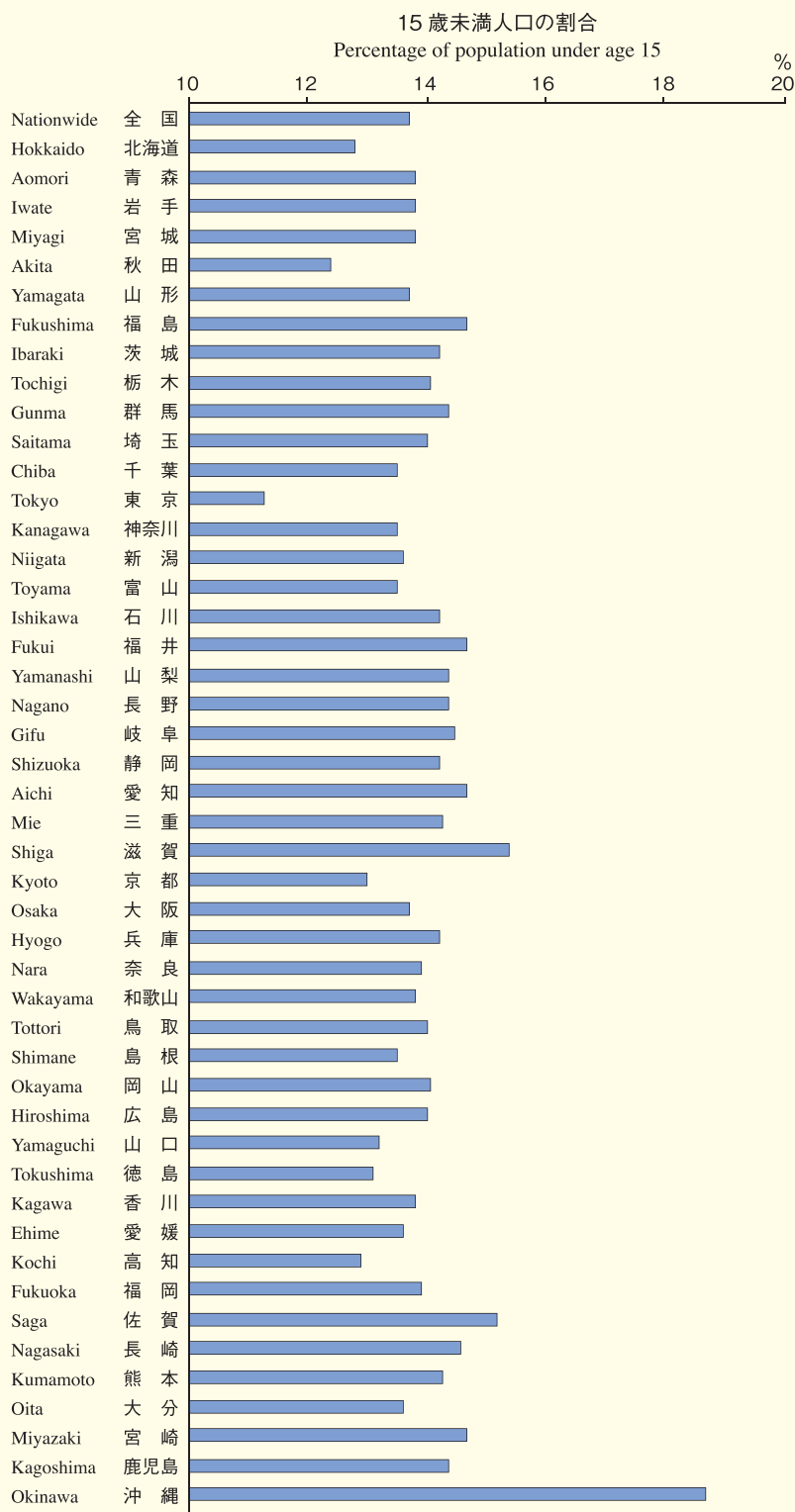
Population by age, under 15, 2005



(平成17年国勢調査)  
(2005 Census)

### (57) 都道府県別、15歳未満人口の割合（平成17年）

Percentage of population under age 15 by prefecture, 2005



(平成17年国勢調査)  
(2005 Census)

## 出生 (Live Births)

### (58) 年次別、出生数と合計特殊出生率

Number of births and total fertility rate by year

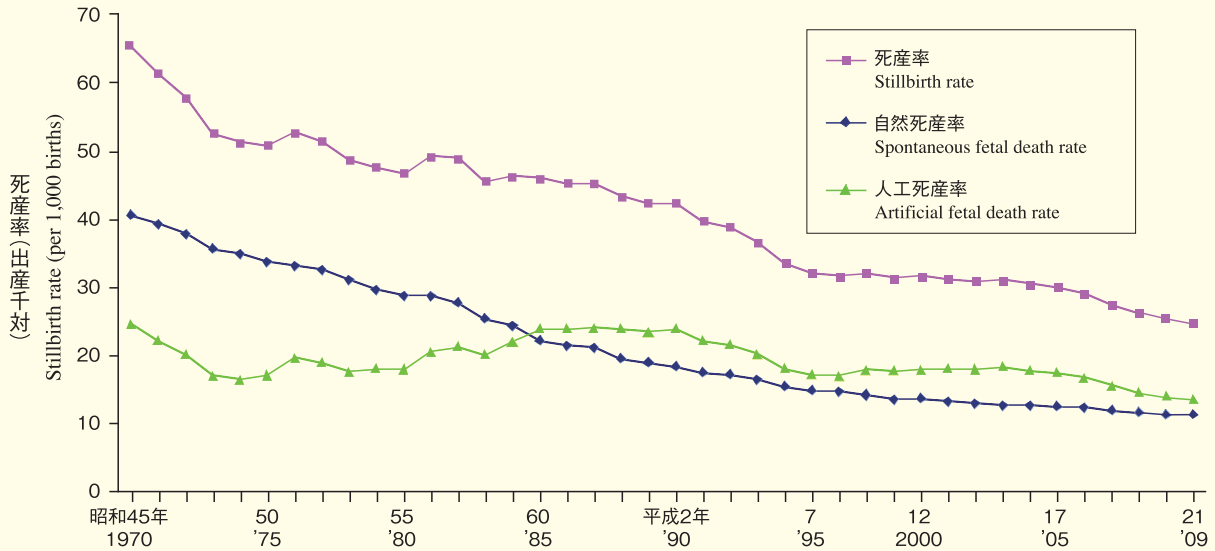


(注) 合計特殊出生率は「15歳～49歳までの女子の年齢別出生率を合計したもの」である。  
 Note: Total fertility rate is calculated by adding the fertility rate by the age of females from ages 15 to 49.

(人口動態統計)  
 (Vital Statistics of Japan)

### (59) 年次別、自然死産率及び人工死産率

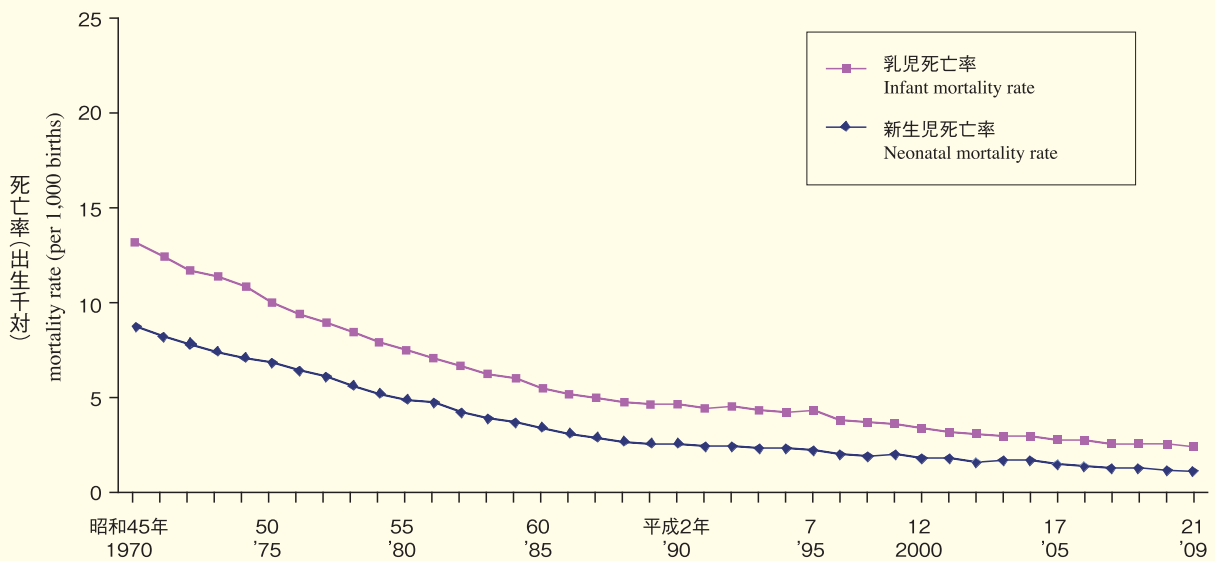
Spontaneous fetal death rate and artificial fetal death rate by year



(人口動態統計)  
(Vital Statistics of Japan)

### (60) 年次別、乳児死亡率及び新生児死亡率

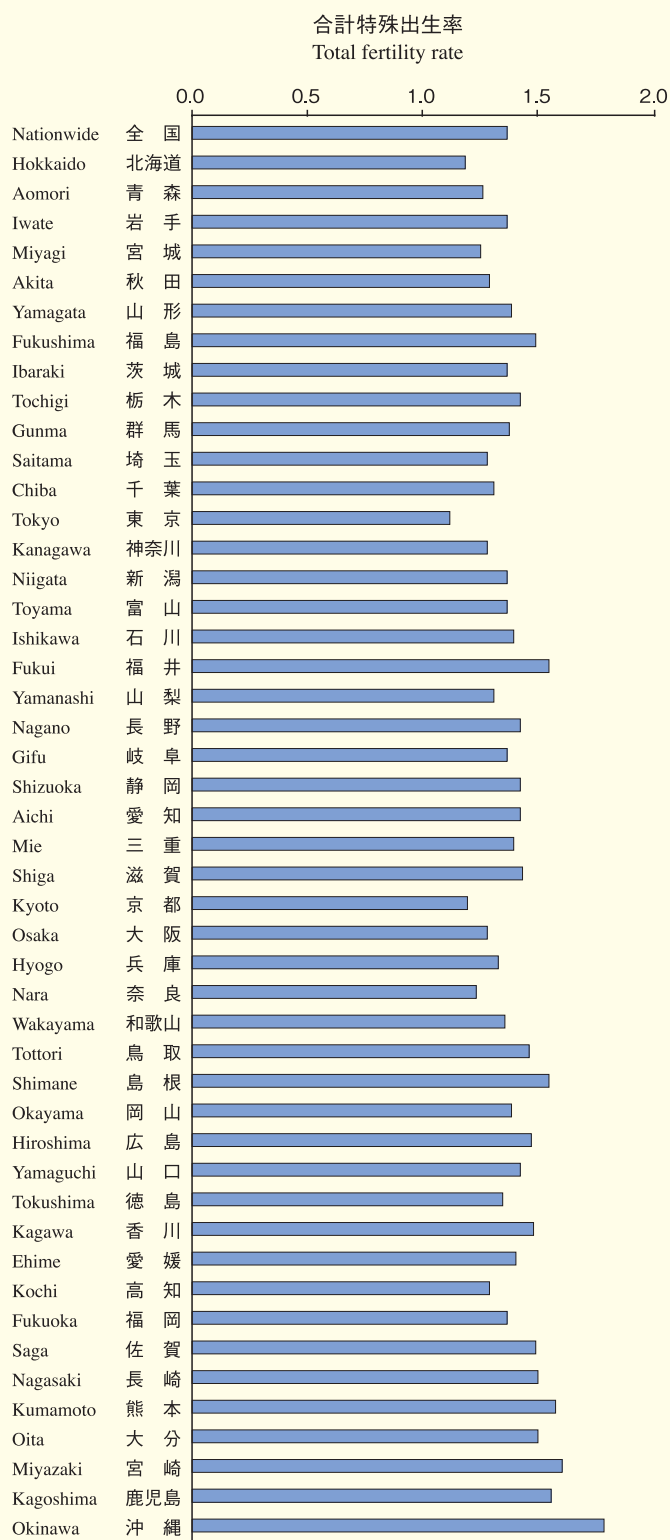
Infant mortality rate and neonatal mortality rate by year



(人口動態統計)  
(Vital Statistics of Japan)

(61) 都道府県別、合計特殊出生率 (平成 21 年)

Number of total fertility rate by prefecture, 2009

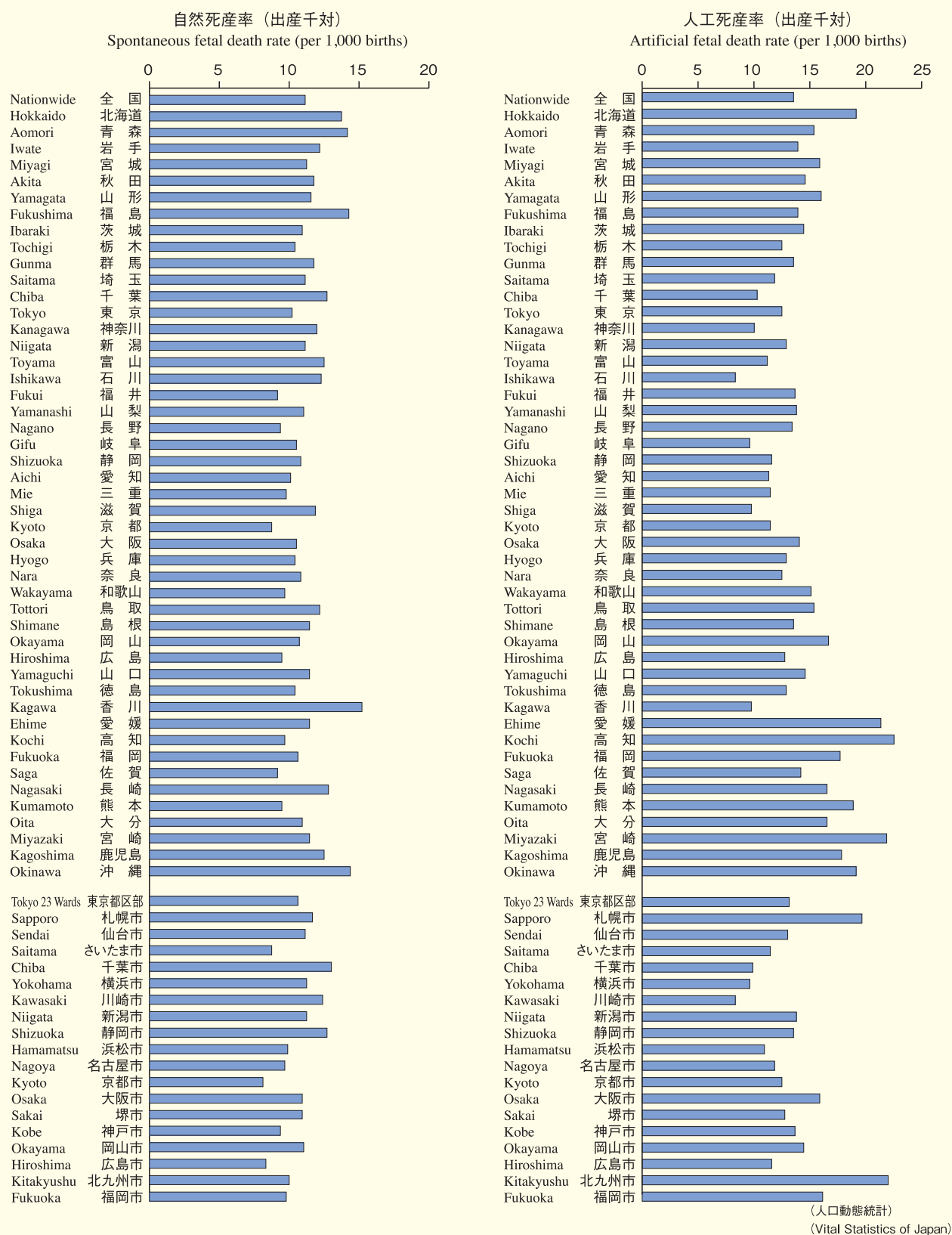


(注) 合計特殊出生率は「15歳～49歳までの女子の年齢別出生率を合計したもの」である。  
 Note: Total fertility rate is calculated by adding the fertility rate by the age of females from ages 15 to 49.

(人口動態統計)  
 (Vital Statistics of Japan)

## (62) 都道府県別、自然死産率及び人工死産率（平成 21 年）

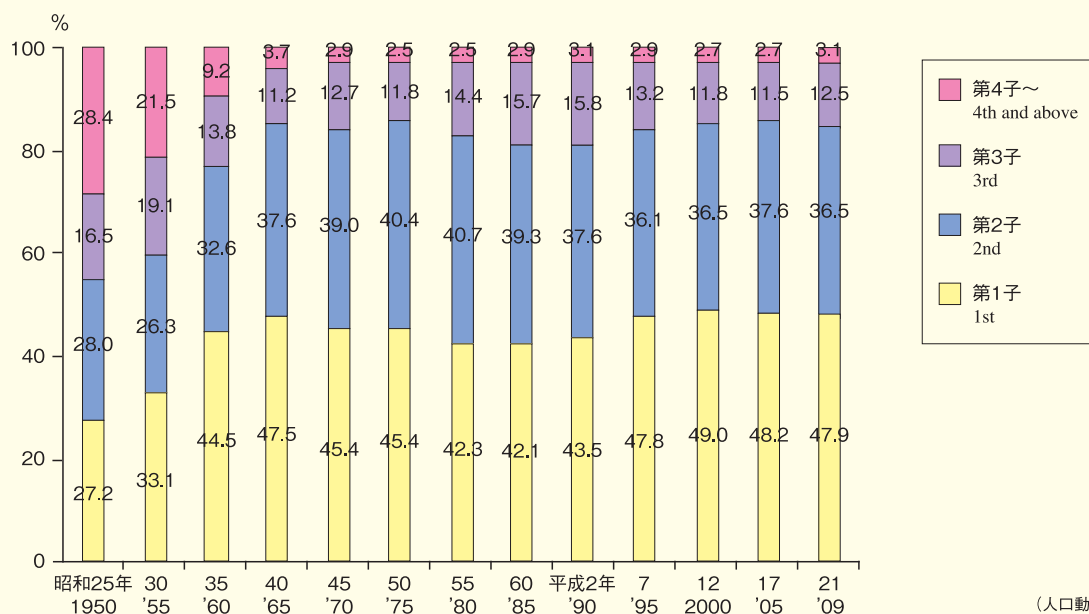
Spontaneous fetal death rate and artificial fetal death rate by prefecture, 2009



(人口動態統計)  
(Vital Statistics of Japan)

### (63) 年次別、出生順位別にみた出生数の割合

Percentage of births by birth order by year

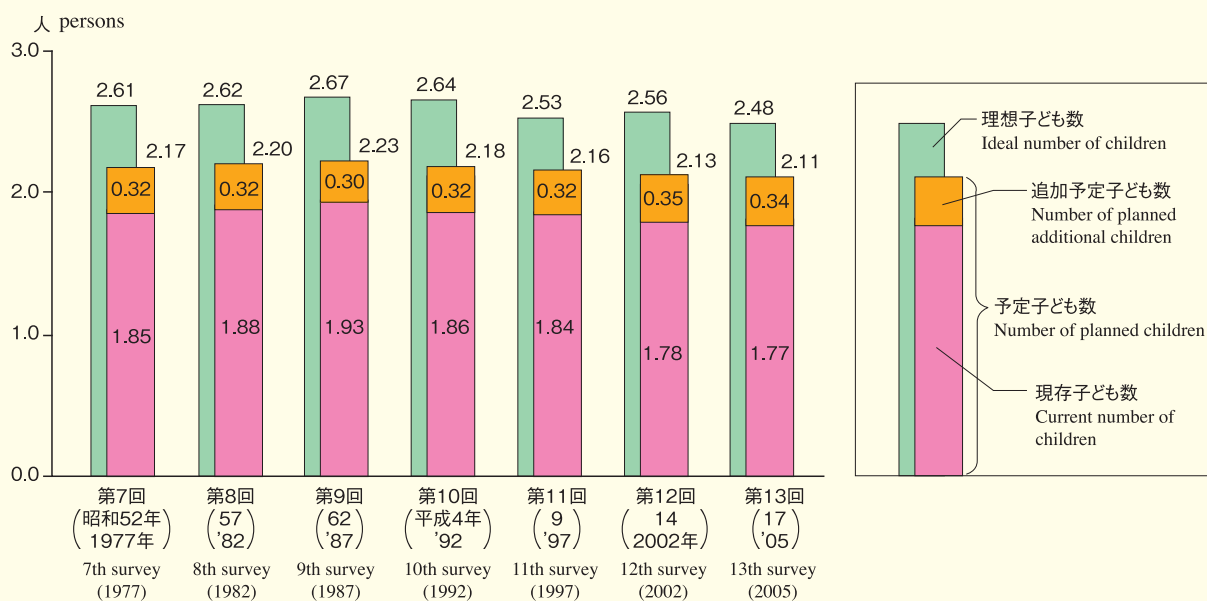


(人口動態統計)  
 (Vital Statistics of Japan)

(注) 出生順位とは、同じ母親がこれまでに生んだ出生子の総数について数えた順序である  
 Note: Birth order is order among all children born from the same mother at the time.

### (64) 夫婦の理想子ども数

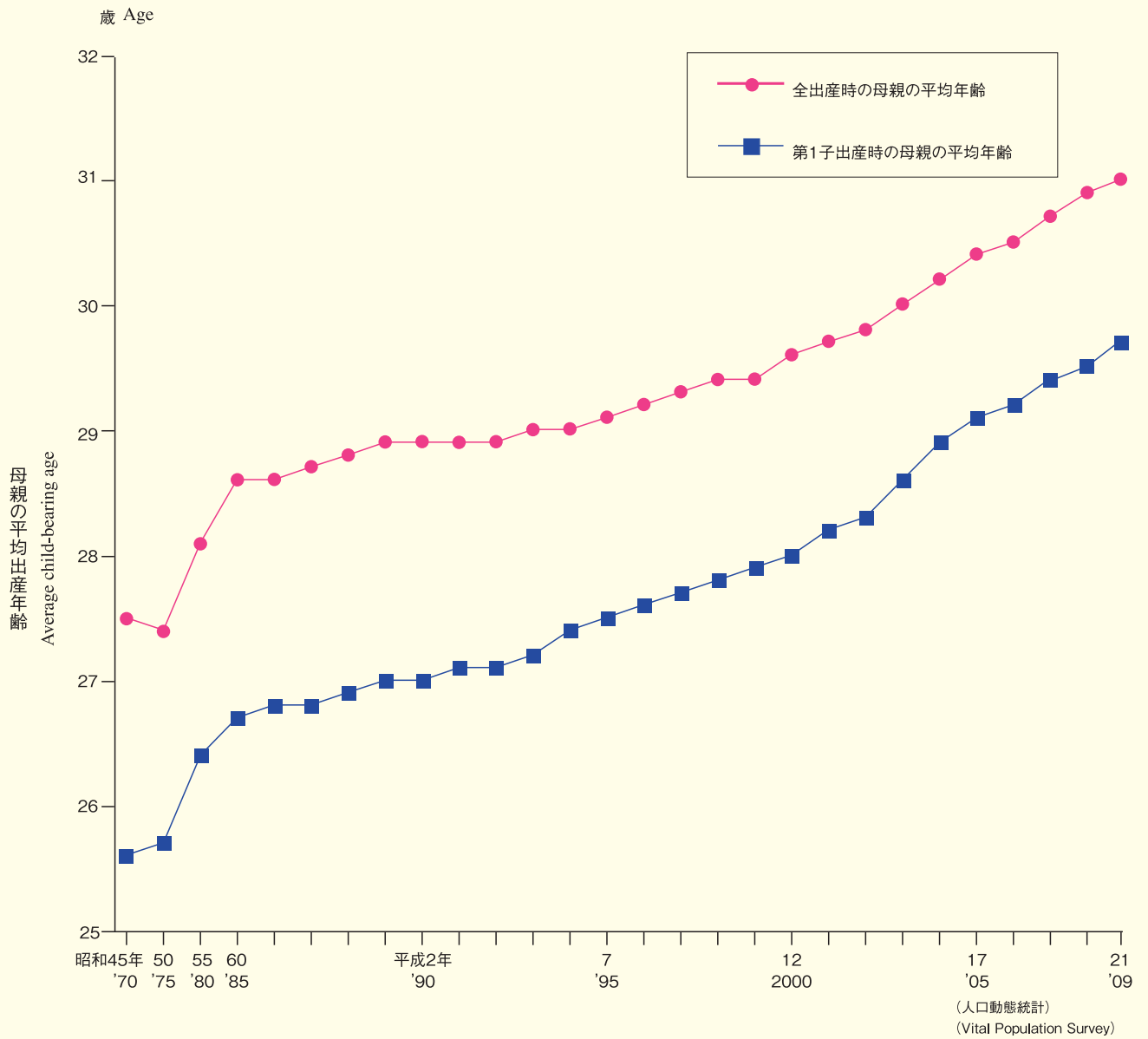
Ideal number of children for married couples



(国立社会保障・人口問題研究所 出生動向基本調査)  
 (Basic Survey of Birth Trends, National Institute of Population and Social Security Research)

### (65) 年次別、母親の平均出産年齢

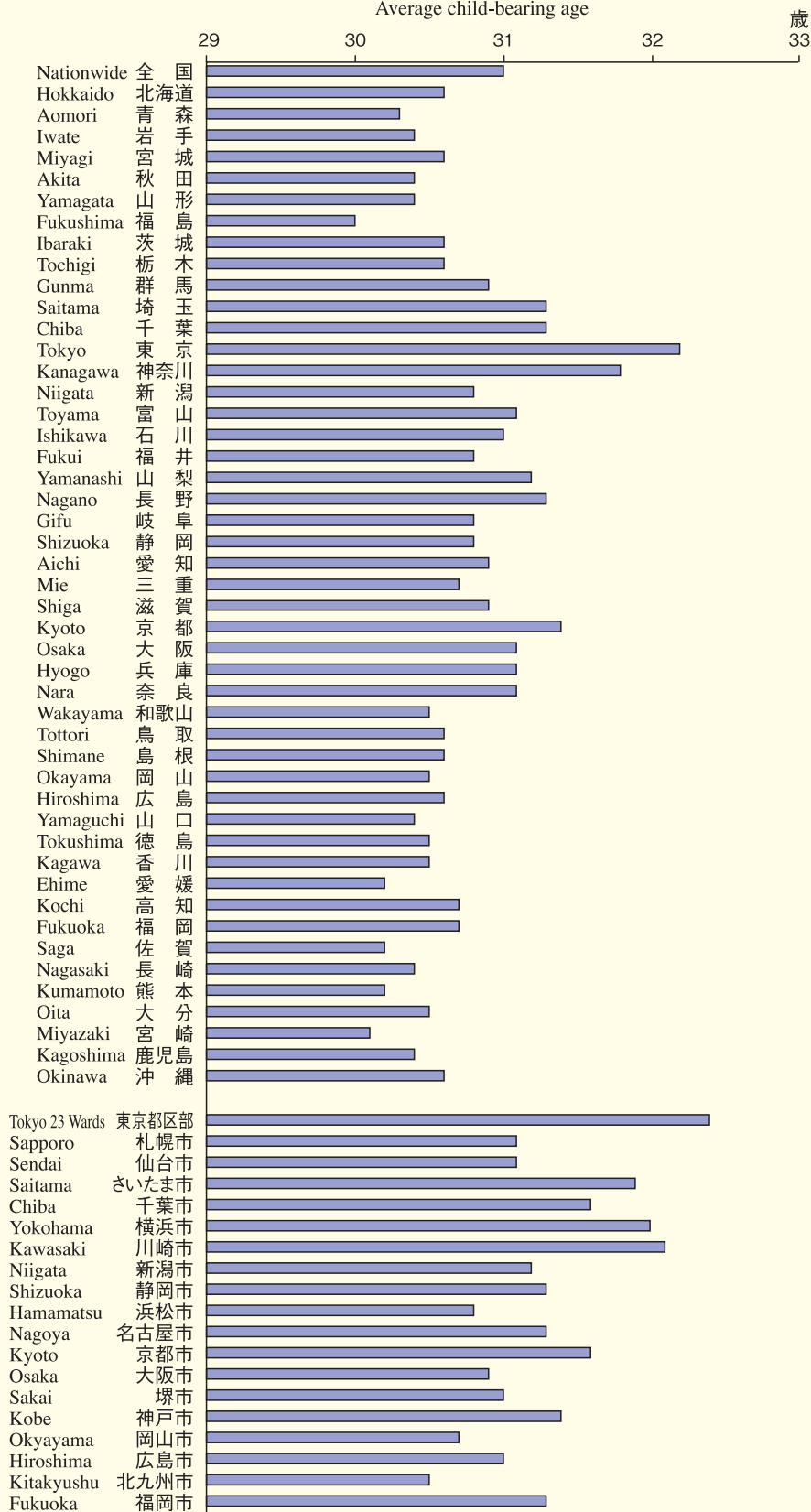
Average child-bearing age by year



(66) 都道府県別、母親の平均出産年齢 (平成21年)

Average child-bearing age by prefecture, 2009

母親の平均出産年齢  
Average child-bearing age

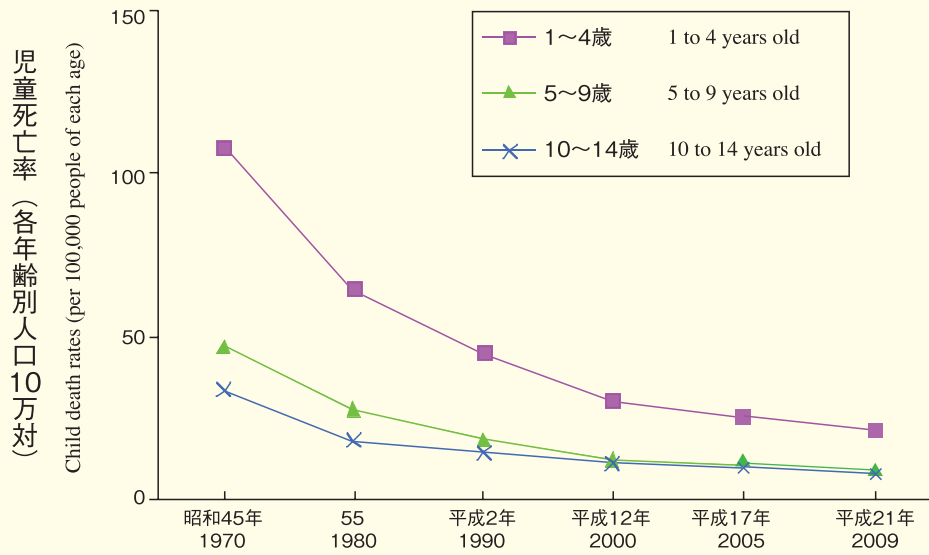


(人口動態統計)  
(Vital Population Survey)

## 死亡 (Deaths)

### (67) 年次別、年齢階級別、児童死亡率

Child death rates by year and age

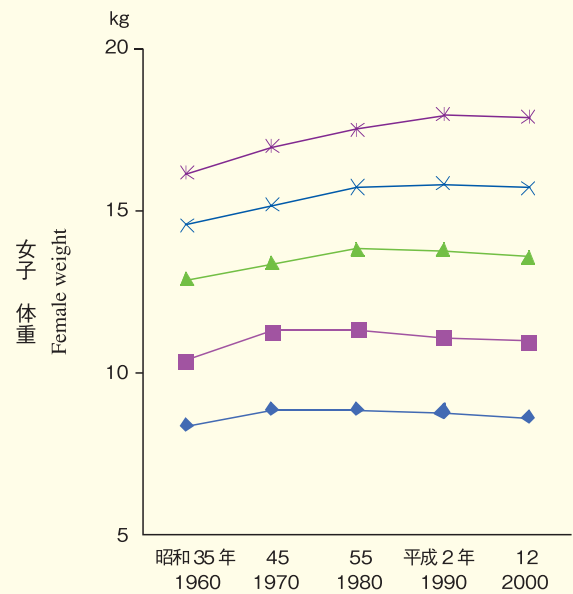
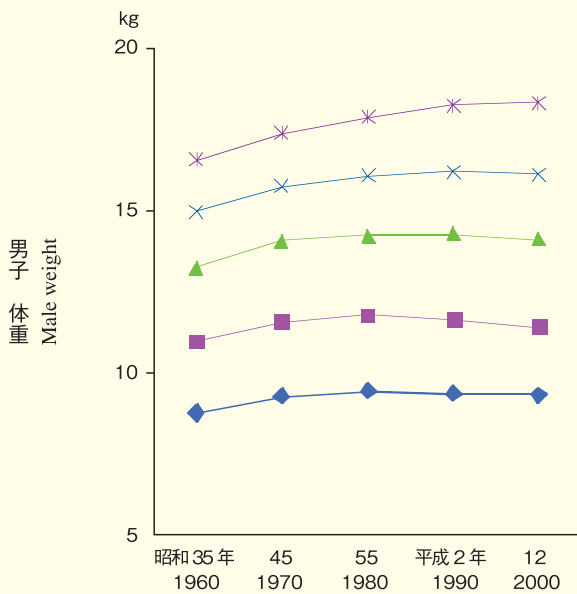
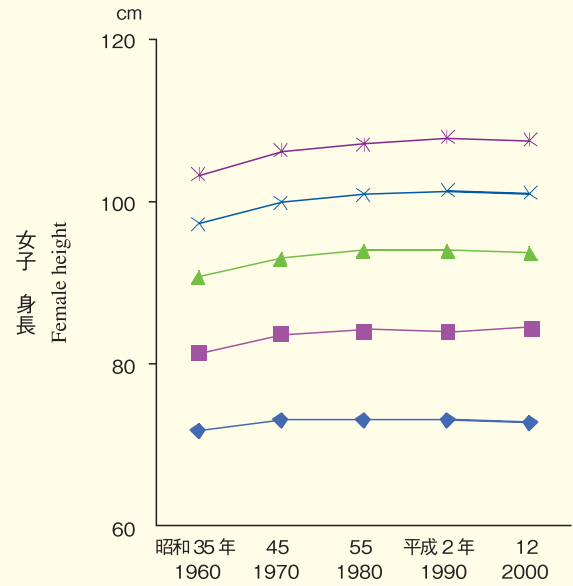
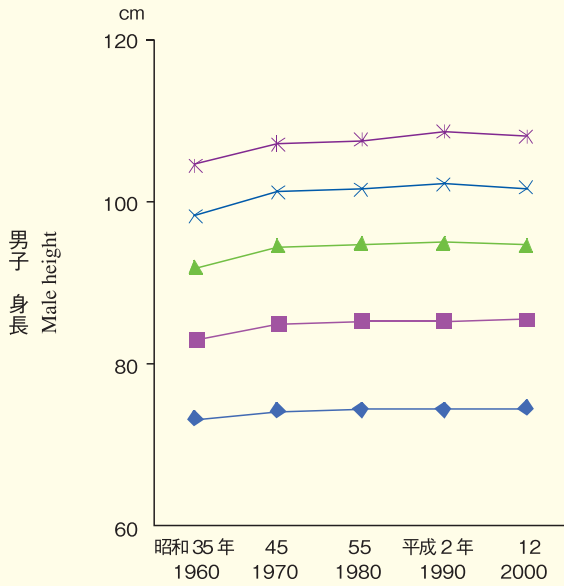


(人口動態統計)  
(Vital Population Survey)

身長と体重 (Weight and Height)

(68) 年次別、乳幼児の身長と体重

Weight and height of infants by year

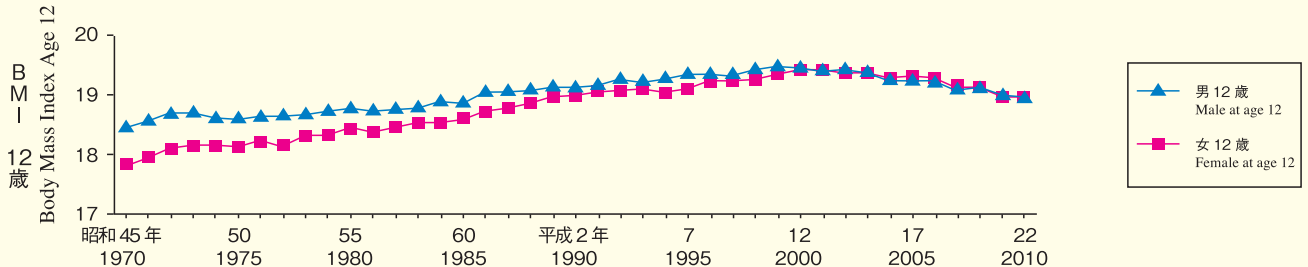
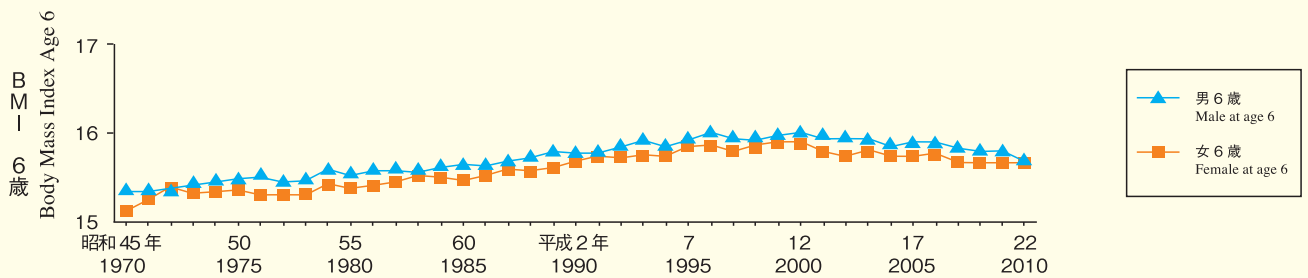
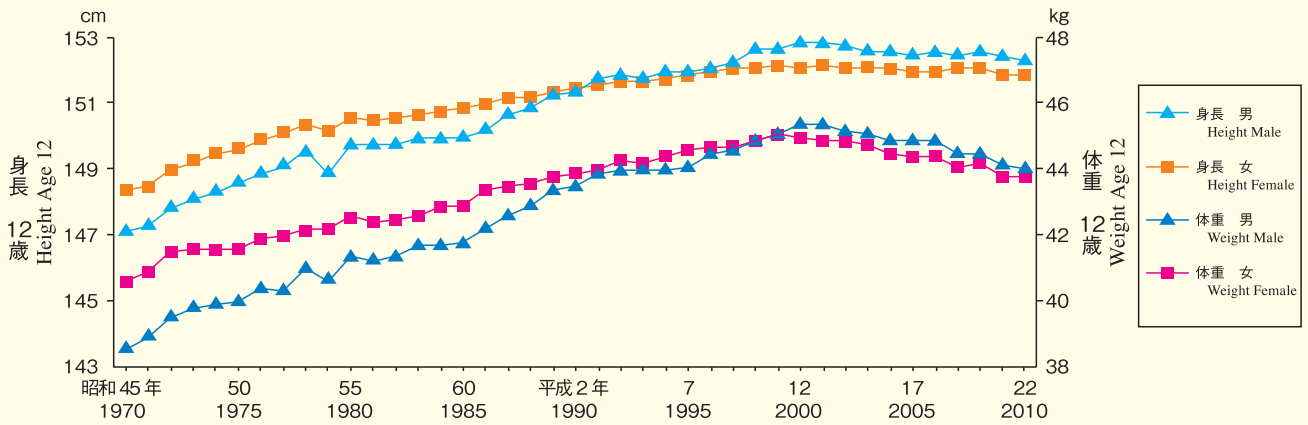
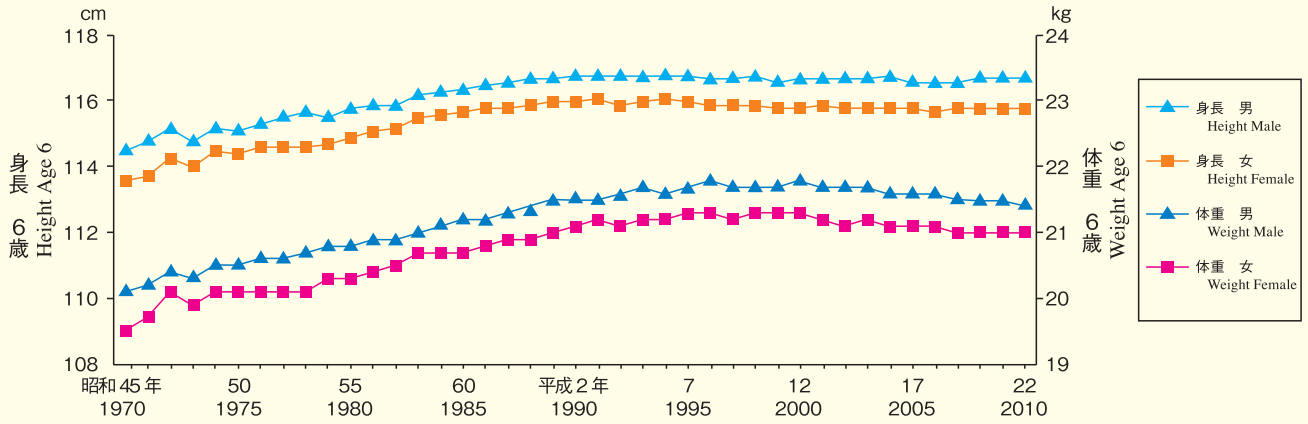


✳	5年0~6か月末	5 years to less than 5 years and 6 months
✳	4年0~6か月未満	4 years to less than 4 years and 6 months
▲	3年0~6か月未満	3 years to less than 3 years and 6 months
■	23~24か月	23 to 24 months
◆	11~12か月	11 to 12 months

(乳幼児身体発育調査)  
 (Survey on the Growth of Infants and Preschool Children)

### (69) 年次別、子どもの身長と体重

Weight and height of children by year



(注) BMI = 体重 [kg] / (身長 [m])<sup>2</sup>  
 BMI < 18.5 低体重 (やせ)  
 18.5 ≤ BMI < 25 普通体重 (正常)  
 BMI ≥ 25 肥満  
 (日本肥満学会肥満診断基準検討委員会, 平成12年)

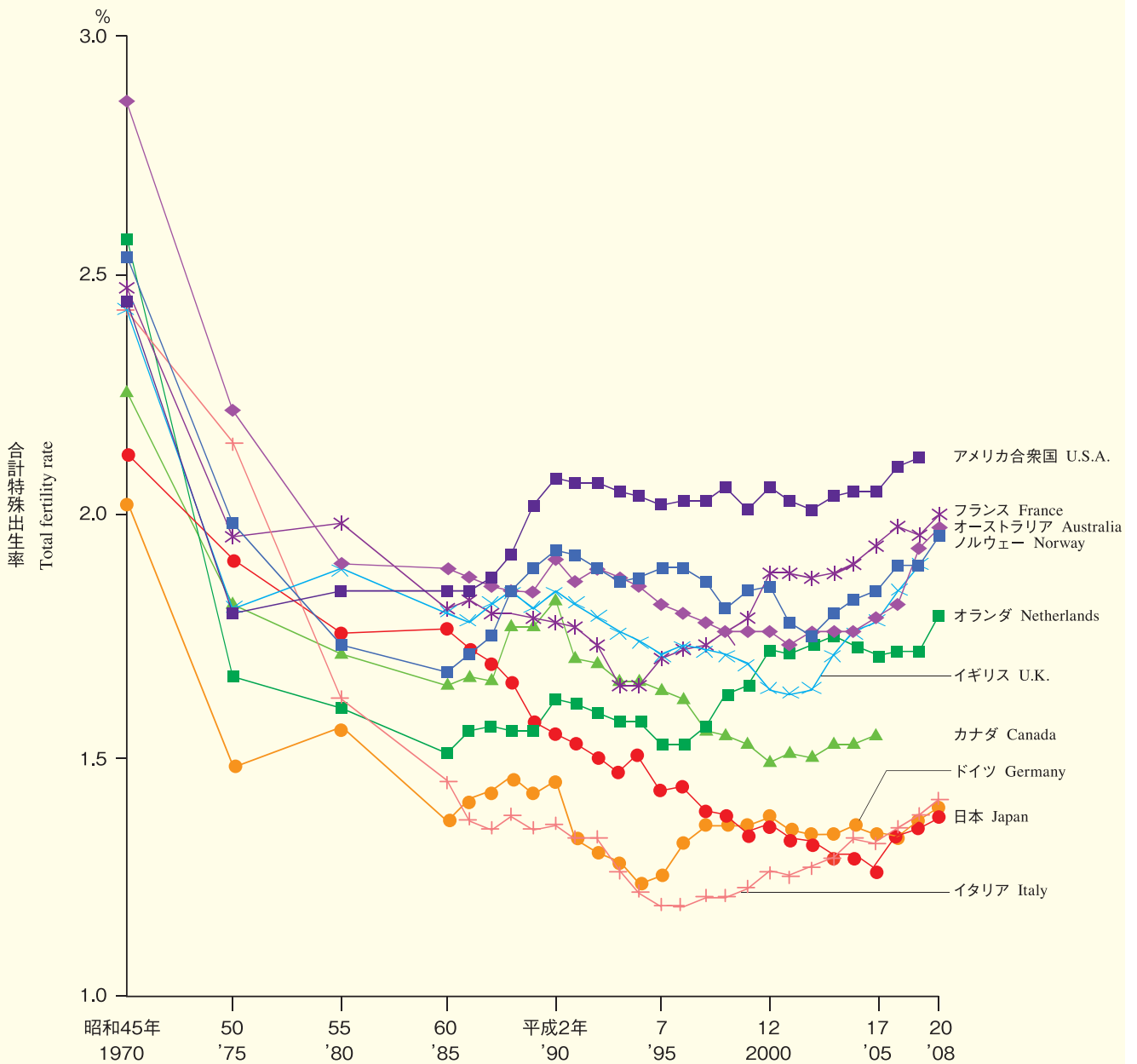
Note: BMI = weight [kg] / (height [m])<sup>2</sup>  
 BMI < 18.5 Underweight (slim)  
 18.5 ≤ BMI < 25 Normal (healthy)  
 BMI ≥ 25 Obese  
 (Japan Society for the Study of Obesity,  
 Obesity Diagnostic Criteria Exploratory Committee 2000)

(学校保健統計)  
 (School Health Survey)

諸外国 (Other Countries)

(70) 諸外国の合計特殊出生率

Total fertility rate in other countries



(注) 合計特殊出生率は「15歳～49歳までの女子の年齢別出生率を合計したもの」である。  
 Note: Total fertility rate is calculated by adding the fertility rate by the age of females from ages 15 to 49.

(国立社会保障・人口問題研究所「人口統計資料集」2011)  
 (National Institute of Population and Social Security Research: Latest Demographic Statistics, 2011)